

Owner's Manual

Parts Manual

Twister
Hammerhead

READ THIS MANUAL CAREFULLY,
IT CONTAINS IMPORTANT SAFETY INFORMATION.

EXTREME

SPORT

ES150IIR

MINIMUM
RECOMMENDED
OPERATOR AGE: **16**



FOR OFF-ROAD USE ONLY

This vehicle is designed and manufactured for off-road use only.

USA only:

It does not conform to Federal Motor Vehicle Safety Standards, and in regards to operation on public streets, roads, or highways is illegal.

TJ POWER SPORTS, LLC – EMISSION CONTROL SYSTEM WARRANTY

YOUR WARRANTY RIGHTS AND OBLIGATIONS

The emission control system warranty period for this vehicle begins on the date the vehicle is delivered to the first purchaser other than an authorized dealer, or the date it is first used as a demonstrator, lease, or company vehicle, whichever comes first and continues for 30 months after that date, or 5,000km, whichever comes first, provided there has been no abuse, neglect or improper maintenance of your vehicle. Where a warrantable condition exists, the Distributor will repair your vehicle at no cost to you, including diagnosis, parts and labor. If an emission-related part on your vehicle is defective, the part will be repaired or replaced by the Distributor. This is your emission control defects warranty.

OWNER'S WARRANTY RESPONSIBILITIES

As the vehicle owner, you are responsible for the performance of the required maintenance. You should maintain a record of all maintenance performed on your vehicle and retain all receipts covering maintenance on your vehicle. You may not be denied a warranty claim solely because of your failure to ensure the performance of all scheduled maintenance or lack of maintenance records or receipts. You are responsible for presenting your vehicle to an authorized dealer as soon as a problem exists. The warranty repairs should be completed in a reasonable amount of time, not to exceed 30 days.

As the vehicle owner, you should be aware that you may be denied your warranty coverage if your vehicle or a part has failed due to abuse, neglect, improper maintenance, or unapproved modifications.

WARRANTY COVERAGE

The Distributor warrants that each new 2008 and later vehicle:

- is designed, built, and equipped so as to conform at the time of initial retail purchase with all applicable regulations of the United States Environmental Protection Agency, and the California Air Resources Board; and
- is free from defects in material and workmanship which cause such vehicle to fail to conform with applicable regulations of the United States Environmental Protection Agency or the California Air Resources Board for the periods specified above.

Your emission control system warranty covers components whose failure would increase an engine's emission, including electronic controls, fuel injection system, carburetor, the ignition system, catalytic converter, or any other system utilized in this vehicle to control emission if it is originally equipped. Also included may be hoses, connectors and other emission-related assemblies. Replacing or repairing other components (including parts, labor, and other costs) not covered by this emission control system warranty or the standard warranty is the responsibility of the owner.

Coverage of repairs under this warranty applies only when repairs are completed at an authorized dealer or repair facility. The Distributor will not cover repairs performed outside of an authorized dealer or repair facility, except in an emergency situation. The use of replacement parts not equivalent to the original parts may impair the effectiveness of your vehicle's emission control system. If such a replacement part is used and an authorized dealer determines it is defective or causes a failure of a warranted part, your claim for repair to bring your vehicle into compliance with applicable standards may be denied.

If an emergency situation exists when a warranted part or a dealer is not reasonably available to the owner, repairs may be performed at any available service establishment, or by the owner, using any replacement part. The Distributor shall reimburse the owner for the expenses, including diagnostic charges, not to exceed the Distributor's suggested retail price for all warranted parts replaced and labor charges based on the Distributor's recommend time allowance for the warranty repair and the geographically appropriate hourly labor rate. The owner may reasonably be required to keep receipts and failed parts in order to receive compensation.

This Emission Control System Warranty is in addition to the standard Limited Warranty.

EXCLUSIONS AND LIMITATIONS

This warranty does not cover the following:

- Failures or malfunctions of the emission control systems caused by abuse, alteration, accident, misuse, the use of leaded gasoline.
- Replacement of expendable maintenance items unless they are original equipment defective in material or workmanship under normal use, and the first required replacement interval for the item has not been reached. Expendable maintenance items include but not limited to spark plugs, filters, coolant, lubricants, gaskets, hoses, and belts.
- Replacements of parts and other services and adjustments for required maintenance.
- Any vehicle equipped with an odometer or hour meter where the reading is altered so that actual mileage cannot be readily determined.
- Repairs or replacements as a result of:
 - Accident
 - Misuse
 - Use of replacement parts or accessories not conforming to the original specifications which adversely affect performance
- Physical damage, corrosion, or defects caused by fire, explosions or similar causes beyond the control of the Distributor.
- Failures not caused by a defect in material or workmanship.

Use of the vehicle in any type of competitive racing or related events immediately and completely voids this and all other warranties.

LIMITED LIABILITY

The liability of the Distributor under this Emission Control System Warranty is limited solely to the remedying of defects in material workmanship by an authorized dealer at its place of business during customary business hours. This warranty does not cover inconvenience or loss of use of the vehicle or transportation of the vehicle to/from the authorized dealer. The Distributor is not liable to any person for incidental, consequential or special damages of any description, whether arising out of express or implied warranty or any other contract, negligence or other tort or otherwise.

No express emission control system warranty is given by the Distributor except as specifically set forth herein. Any emission control system warranty implied by law, including any warranty of merchantability or fitness for a particular purpose is limited to the express emission control system warranty terms stated in this warranty. The foregoing statements of warranty are exclusive and in lieu of all other remedies. All express warranties not stated in this warranty are disclaimed. Some states do not allow limitations on how long an implied warranty lasts, so the above limitations may not apply if it is inconsistent with the controlling state law.

No dealer is authorized to modify this Emission Control System Warranty. If you have any questions regarding your warranty rights and responsibilities, you should contact TJ Power Sports, LLC at 8730 North Royal Lane, Irving, TX 75063 or the California Air Resources Board, 9528 Telstar Avenue, El Monte, CA 91731 (for California registered vehicles only).

CONTENTS

OWNER' S MANUAL

	Page
1. FOREWORD	1
2. A FEW WORDS ABOUT SAFETY	2
3. IMPORTANT SAFETY INFORMATION	3
4. SAFETY LABELS	5
5. ARE YOU READY TO DRIVE ?	6
6. IS YOUR VEHICLE READY TO DRIVE?	7
7. SAFE DRIVING PRECAUTIONS	8
8. P.D.I.	10
9. SPECIFICATIONS	11
10. OPERATION	13
11. SERVICE INSTRUCTIONS	17
12. REPAIR	21
13. PERIODICAL CHECK AND SERVICES	23
14. WIRING DIAGRAM	23

PARTS MANUAL

	Fig
1. CYLINDER HEAD ASSY.	Fig. 1
2. CYLINDER ASSY.	Fig. 2
3. CRANKCASE ASSY.(1)	Fig. 3
4. CRANKCASE ASSY.(2)	Fig. 4
5. CRANKSHAFT CON'ROD &PISTON ASSY.	Fig. 5
6. CAMSHAFT ASSY.	Fig. 6
7. LEFT COVER ASSY.	Fig. 7
8. FAN COVER AND SHROUD ASSY.	Fig. 8
9. OIL PUMP ASSY.	Fig. 9
10. DRIVEN PULLEY AND CLUTCH SUBASSY.	Fig.10
11. TRANSMISSION ASSY.	Fig.11
12. ELECTRIC SYSTEM	Fig.12
13. ELECTRIC STARTER ASSY.	Fig.13
14. DRIVE PULLEY SUBASSY.	Fig.14
15. CARBURETOR	Fig.15
16. FRAME GROUP	Fig.16
17. STEERING SHAFT ASSY.	Fig.17
18. SUSPENSION ARM ASSY.	Fig.18
19. SPEAKER/SEAT/BELT	Fig.19
20. REAR SWING ARM ASSY. UPPER	Fig.20
21. ENGIN/MUFFLER/AIR CLEANER	Fig.21
22. REAR SWING ARM	Fig.22
23. REAR HOUSING	Fig.23
24. WIRE HARNESS/ELECTRICAL	Fig.24
25. REVERSE ASSY.	Fig.25
26. WARNING STICKERS	Fig.26

FOREWORD

Thank you for purchasing our kart. We hope you will enjoy it. Before you start to operate the kart, please read through this Owner's Manual carefully as it contains important safety and maintenance information. Failure to follow the warnings contained in this manual can result in serious injuries or death.

Be sure to follow the recommended maintenance schedule and service your kart accordingly. Preventive maintenance is extremely important to the longevity of your kart.

Beginners should seek instruction from your dealer or qualified instructors before and during initial use of the kart. It is also recommended to practice in a large flat open area to familiarise yourself with operations of this kart.

We hope you will have a pleasant experience with our products and thank you again for choosing our kart.

A FEW WORDS ABOUT SAFETY


In order to keep everyone safe, you must take responsibility for the safe operation of your kart.

To help you make informed decisions about safety, we have provided operating procedures and other information on labels and in this manual. This information alerts you to potential hazards that could hurt you or others.

It is not practical or possible to warn you about all hazards associated with operating or maintaining a kart. You must use your own good judgment.

You will find important safety information in a variety of forms, including:

Safety Labels – On the kart.

Safety Messages – Preceded by a safety alert symbol  and one of two signal words: **WARNING**, or **CAUTION**.

These signal words mean:



Physical harm may result from failure to adhere to the instructions that are described within the **WARNING** labels.

Safety Headings — such as Important Safety Reminders or Important Safety Precautions.

Safety Section — such as Kart Safety.

Instructions — how to use this kart correctly and safely.

This entire manual is filled with important safety information—please read it all carefully.

IMPORTANT SAFETY INFORMATION

Your kart will provide you with many years of use and pleasure. Providing you take responsibility for your own safety and that of any one else using your kart or near to the kart when it is being used and understand the challenges you can meet while driving.

There is much that you can do to protect yourself while operating your kart. You will find many helpful recommendations throughout this manual. The following are a few that we consider to be the most important.

Follow the Age Recommendation

The kart should not be driven by anyone under the age of 16.

Always Wear a Helmet

It's a proven fact: helmets significantly reduce the number and severity of head injuries. Always wear an approved motorcycle helmet. We also recommend that you wear eye protection, sturdy boots, gloves, and other protective gear.

Drive Off-Road Only

Your kart is designed and manufactured for off-road use only. The tires are not made for use on pavements, and the kart does not have turn signals and other features required for use on public roads. If you need to cross a paved or public road, get off and walk your kart across.

Take Time to Learn & Practice

Even if you have driven other karts, take time to become familiar with how this kart works and handles. Practice in a safe area until you build your skills and get accustomed to this kart's size and weight.

Because many accidents involve inexperienced or untrained drivers, we urge all drivers to take a training course. Check with your dealer for more information on training courses.

Be Alert for Off-Road Hazards

The terrain can present a variety of challenges when you drive off-road. Continually "read" the terrain for unexpected turns, drop-offs, rocks, ruts, and other hazards. Always keep your speed low enough to allow time to see and react to hazards.

IMPORTANT SAFETY INFORMATION

Drive within Your Limits

Pushing limits is another major cause of kart accidents. Never drive beyond your personal abilities or faster than conditions warrant. Remember that alcohol, drugs, fatigue, and inattention can significantly reduce your ability to make good judgments and drive safely.

Don't Drink and drive

Alcohol and driving don't mix. Even one drink can reduce your ability to respond to changing conditions, and your reaction time gets worse with every additional drink. So don't drink and drive, and don't let your friends drink and drive either.

Do not operate this kart at night.

Dark vision can greatly reduce a driver's visibility and judgment. So driving at night is dangerous and can increase the possibility for an accident.

Never run your kart indoors.

The exhaust from the engine contains a tasteless, odorless and poisonous gas called carbon monoxide.

Keep away from moving parts of the kart

The operator of the kart should never place their hands or other parts of their body near any moving part of the kart. Failure to adhere to this warning will cause physical harm to your body.

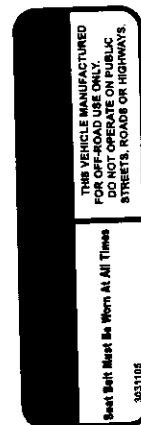
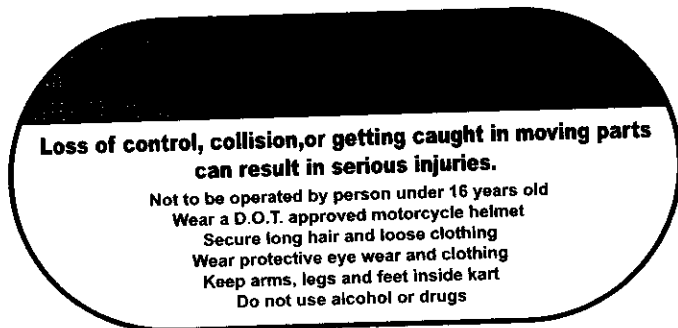
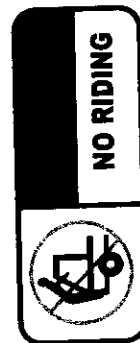
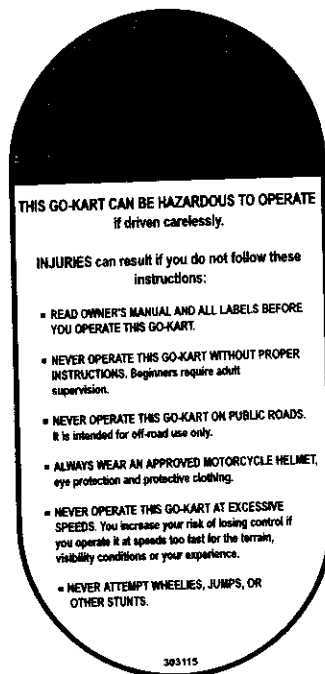
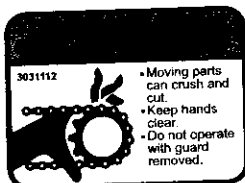
Skidding or Sliding

The terrain surface can be a major factor affecting turns. Skidding in a turn is more likely to occur on slippery surfaces such as snow, ice, mud and loose gravel. If you skid on ice, you may lose all directional control. To avoid skidding on slippery terrain, keep your speed low and drive carefully.

SAFETY LABELS

This section presents some of the most important information and recommendations to help you drive your kart safely. Please take a few moments to read these pages.

The labels should be considered permanent parts of the kart. If a label comes off or becomes hard to read, contact your dealer for warning label replacements.



ARE YOU READY TO DRIVE ?

Before each drive, you need to make sure that you and your kart are both ready to drive. To help get you prepared, this section discusses how to evaluate your driving readiness, what items you should check on your kart, and adjustments to make for your comfort, convenience, or safety.

Before you drive your kart for the first time, we urge you to:

- Read this owner's manual and the labels on your kart carefully.
- Make sure you understand all the safety messages.
- Know how to operate all the controls.

Before each drive, be sure:

- You wear your seat belt at all times while driving your kart.
- You feel well and are in good physical and mental condition.
- You are wearing an approved motorcycle helmet (with chin strap tightened securely), eye protection, and other protective clothing.
- You don't have any alcohol or drugs in your system.

Protective Apparel

For your safety, we strongly recommend that you always wear an D.O.T. approved motorcycle helmet, eye protection, boots, gloves, long pants, and long-sleeved shirt or jacket whenever you drive.

Although complete protection is not possible, wearing proper gear can reduce the chance of injury should you have an accident.

The following suggestions will help you choose the proper protective gear.

Helmets and Eyes Protection

Your helmet is your most important piece of protective gear because it offers the best protection against head injuries. A helmet should fit your head comfortably and securely.

An open-face helmet offers some protection, but a full-face helmet offers more. Regardless of the style, look for a D.O.T. (Department of Transportation) sticker on any helmet you buy. Always wear a face shield or goggles to protect your eyes and help your vision.

WARNING

Operating this kart without wearing an approved motorcycle helmet, eye protection, and protective clothing could increase your chances of head and/or eye injury, and the possibility of death in the event of a severe accident.

Always wear an approved motorcycle helmet that fits properly and wear eye protection (goggles or face shield), gloves, boots, long-sleeved shirt or jacket and long pants.

ARE YOU READY TO DRIVE ?

Additional Driving Gear

In addition to a helmet and eye protection, we also recommend:

- Sturdy off-road motorcycle boots to help protect your feet, ankles, and lower legs.
- Off-road motorcycle gloves to help protect your hands.
- Driving pants with knee and hip pads, a driving jersey with padded elbows, and a rider protector.

Driver Training

Developing your driving skills is an on-going process. Even if you have driven other karts, before take time to become familiar with how this kart works and handles. Practice driving the kart in a safe area to develop your skills. Do not drive on rough terrain until you get accustomed to the kart's controls, and feel comfortable with its size and weight.

WARNING

Operating this kart without your seat belt could cause you to be thrown from the kart, causing serious injury or death.

No Alcohol or Drugs

Alcohol, drugs and karts don't mix. Even a small amount of alcohol can impair your ability to operate a kart safely. Likewise, drugs-even if prescribed by a physician-can be dangerous while operating a kart. Consult your doctor to be sure it is safe to operate a vehicle after taking medication.

WARNING

Operating this kart after consuming alcohol or drugs can seriously affect your judgment, cause you to react more slowly, affect your balance and perception, and could result in serious injury or death.
Never consume alcohol or drugs before or while operating this kart.

IS YOUR VEHICLE READY TO DRIVE?

Before each drive, it is important to inspect your kart and make sure any problems you find are corrected. A pre-drive inspection is a must, not only for safety, but because having a breakdown, or even a flat tire, can be a major inconvenience.

If your kart has overturned or has been involved in a collision, do not drive it until your kart has been inspected by your dealer. There may be damage or other problems that you can not see.

WARNING

Improperly maintaining this kart or failing to correct a problem before driving can cause a crash in which you can be seriously hurt or killed.
Always perform a pre-drive inspection before every drive and correct any problems.

SAFE DRIVING PRECAUTIONS

Off-Road Use Only

Your kart and its tires are designed and manufactured for off-road use only, not for use on paved surfaces. Driving on paved surfaces can affect the kart handling and control.

WARNING

Operating this kart on paved surfaces may seriously affect handling and control of the kart, and may cause the vehicle to go out of control.

Never operate the kart on any paved surfaces, including sidewalks, driveways, parks lots and streets.

When driving off-road, also remember to always obey local off-road driving laws and regulations. Obtain permission to drive on private property. Avoid posted areas and obey "no trespassing" signs.

You should never drive your kart on public streets, roads or highways, even if they are not paved. Drivers of street vehicles may have difficulty seeing and avoiding you, which could lead to a collision.

WARNING

Operating this kart on public streets, roads or highways could cause a collision with another vehicle.

Never operate this kart on any public streets, roads or highways, whether they are dirt, gravel or paved surfaces.

Keep Hands and Feet on Controls

When driving your kart, always keep both hands on the steering wheel and both feet on the foot controls. It is important to maintain your balance and to control the kart. Removing hands or feet away from the controls can reduce your ability to react and control the kart.

WARNING

Removing your hands from the steering wheel or feet from the foot controls during operation can reduce your ability to control the kart or could cause you to lose your balance and fall off the kart.

Always keep both hands on the steering wheel and both feet on the foot controls of your kart during operation.

SAFE DRIVING PRECAUTIONS

Control Speed

Driving at excessive speed increases the chances of an accident. In choosing an appropriate speed, you need to consider the capability of your kart, the terrain, visibility and other operating conditions, plus your own skill and experience.

WARNING

Operating this kart at excessive speeds increases your chances of losing control of the kart, which can result in an accident.

Always drive at a speed that is appropriate for your kart, the terrain, visibility and other operating conditions, and your experience.

Use Kart on Unfamiliar or Rough Terrain

Before driving in a new area, always check the terrain thoroughly. Don't drive fast on unfamiliar terrain or when visibility is limited (it's sometimes difficult to see obstructions like hidden rocks, bumps, or holes in time to react).

WARNING

Failure to use extra care when operating this kart on unfamiliar terrain could result in the kart overturning or going out of control.

Go slowly and be extra careful when operating on unfamiliar terrain. Always be alert to changing terrain conditions when operating the kart.

Never drive past the limit of visibility. Maintain a safe distance between your kart and other off-road vehicles. Always exercise caution and use extra care on rough, slippery and loose terrain.

WARNING

Failure to use extra care when operating on excessively rough, slippery or loose terrain could cause loss of traction or vehicle control, which could result in an accident, including an overturn.

Do not operate on excessively rough, slippery or loose terrain until you have learned and practiced the skills necessary to control the kart on such terrain. Always be especially cautious on these kinds of terrain.

Do Not Perform Stunts

You should always operate your kart in a safe and reasonable manner. When driving, always keep all four wheels on the ground.

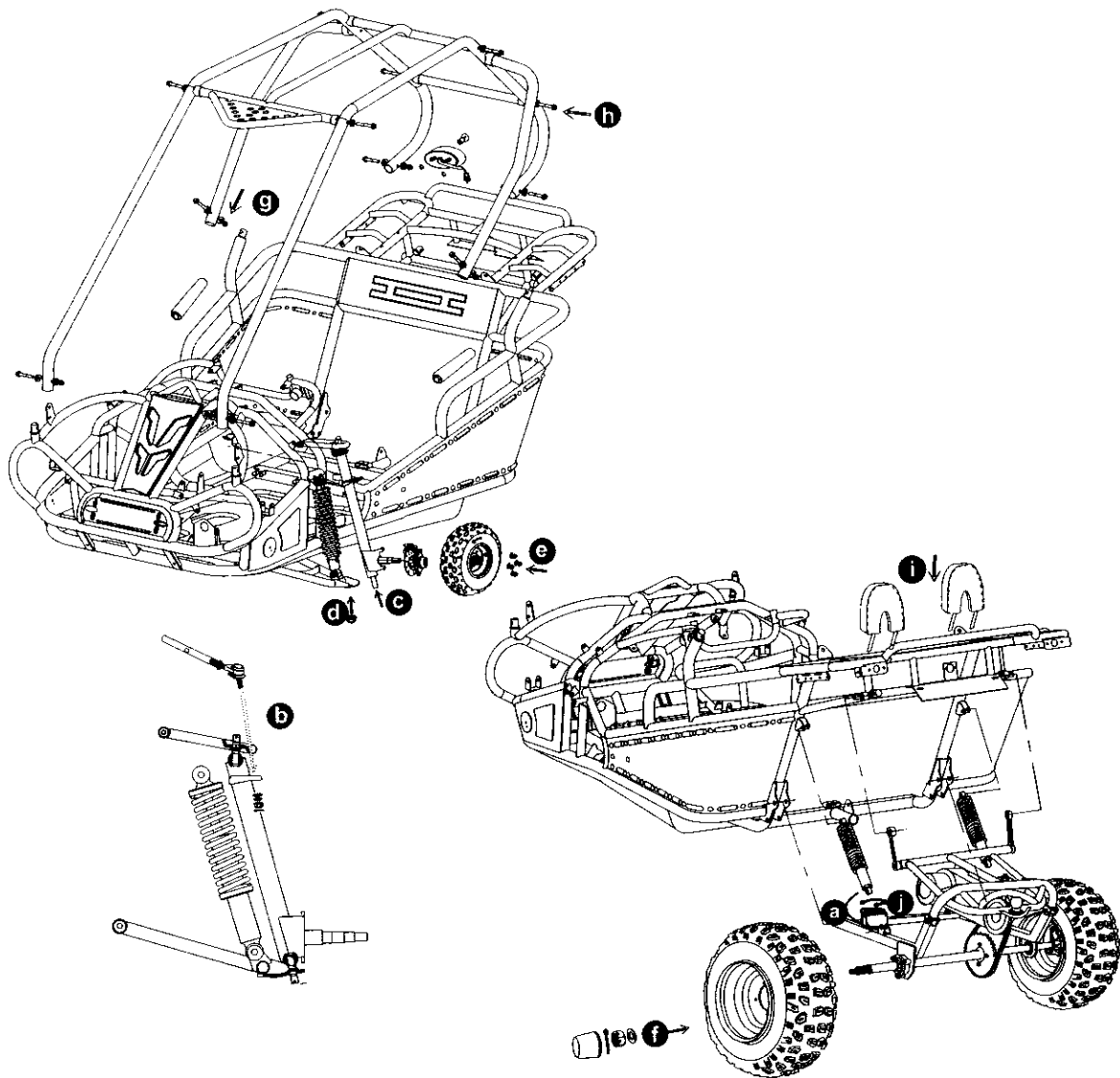
WARNING

Attempting wheelies, jumps, and other stunts increases the chance of an accident, including an overturn.

Never attempt stunts, such as wheelies or jumps. Don't try to show off.

P.D.I.

- a. Install RR. Shocks and tighten the nuts.
- b. Install Ball Head, Tie Rod, tighten the Castle Nut and insert the cotter Pin.
- c. Install Dust Seals, align the Ball Head Bolt, Knuckle Support to the square hole on the Lower A-Arm.
- d. Install Flange Nut and tighten it (> 88.9 foot lbs)
- e. Install Front Tires and tighten the nuts.
- f. Install Rear Tires, tighten the nuts, insert cotter Pin and put on the Rubber Cover.
- g. Raise the C.B.C custom bar cage as what picture shows
- h. Install C.B.C custom bar cage RR., put on R-Washer.
- i. Install Head-Rest.
- j. Check all nuts and bolts, wiring, cables, fuel line, switches and tire pressure.
- k. Fill battery with Acid and charge, check and fill the engine with the recommended oil.
- l. Fill fuel tank with Unleaded Gasoline, and turn on the ignition switch to start the engine.



SPECIFICATIONS

DIMENSIONS

Overall Length	85 in. (2160mm)
Overall Width	55.4 in. (1406mm)
Overall Height	57.4 in. (1458mm)
Wheelbase	59 in. (1500mm)
Front Track	45.7 in. (1160mm)
Rear Track	39.4 in. (1000 mm)
Ground Clearance	6.7 in. (170mm)

ENGINE

Type	Oil & Air cooled. 4-Stroke
Engine capacity	150cc
Bore / Stroke	57.4mm x 57.8mm
Displacement	149.6cm ³
Corrected compression ratio	9.2:1
Carburator	KF,CB24J
Output Power	7.4Kw/7500rpm
Maximum Torque	13/5500 foot lbs/r/min
Starting	Electric
Ignition	C.D.I.
Lubrication	Force & Splash
Transmission	Automatic (C.V.T system)
Spark plug	C7HSA(NGK)
Plug gap	0.6-0.7mm
Fuel Type	RQ90 (unleaded)
Lubricate oil	SAE-10W/40

CAPACITIES

Maximum load	Double Seats/400lbs
Fuel tank	2.64 Gal
Engine oil	30 Oz
Starting	<5s
Climbing	20° -25°
Battery	12V 10Ah
Head Light	12V 35W/35W
Tail Light	12V 21W/5W
Fuse	10A

SPECIFICATIONS

Brake Track ----- < 7 m@20miles/h
Top speed ----- 45 miles/h(or limited as customers require)

CHASSIS

Front, Rear brake ----- Hydraulic disc, left foot control
Front tire ----- 20 x 7-8
Rear tire ----- 22 x 10 -10
Front Suspension ----- Independent Dual A-Arm
Rear Suspension ----- Swing Arm/Double Oil Damped Shock
Restraint System ----- Dual 4-point Harness
Final Drive Chain ----- (KMC) O-Ring Chain

TIRE PRESSURE

Front -----150kPa 1.5kg/cm² 21.3psi
Rear -----200kPa 2.0kg/cm² 28.4psi

WEIGHT

Net Weight ----- 465 lbs

A. Operation controls

WARNING - Do not attempt to start or operate the engine until completely familiar with the location and use of each control necessary to operate this vehicle. The operator must know how to stop this machine before starting and driving it.

a. Throttle

The right foot pedal is the throttle that controls the kart speed. As the engine speed increases above idle, the clutch automatically engages and moves the vehicle forward. To disengage the clutch at any time, allow the throttle to return to the idle position. (See Fig. 1)

WARNING

Each time prior to starting the engine, check the throttle assembly to ensure that when the pedal is pushed all the way forward the assembly is working smoothly and returns to idle when released. Do not operate if pedal or engine throttle linkage fail to return to idle. If unable to correct the problem through lubrication, adjustment or replacement of worn parts, contact your dealer for assistance.

b. Brake

The brake is the left foot pedal (See Fig.1). Applying pressure to the pedal draws the brake caliper around the brake disc at the rear wheel and slows or stops the kart.

c. Start engine

Insert the key into key-switch, turn the key clockwise, release the key when the engine starts. The engine will warm up within 5 minutes and the engine choke will close automatically and operate at the normal RPM (Warning: Don't crank starter more than 5 seconds at one time).

d. Engine stop button

Important-stop button test.

Before driving this vehicle, test the Engine Stop Button to ensure that it is operating properly. With the engine running, push and hold the Engine Stop Button for two seconds for the engine to shut down.

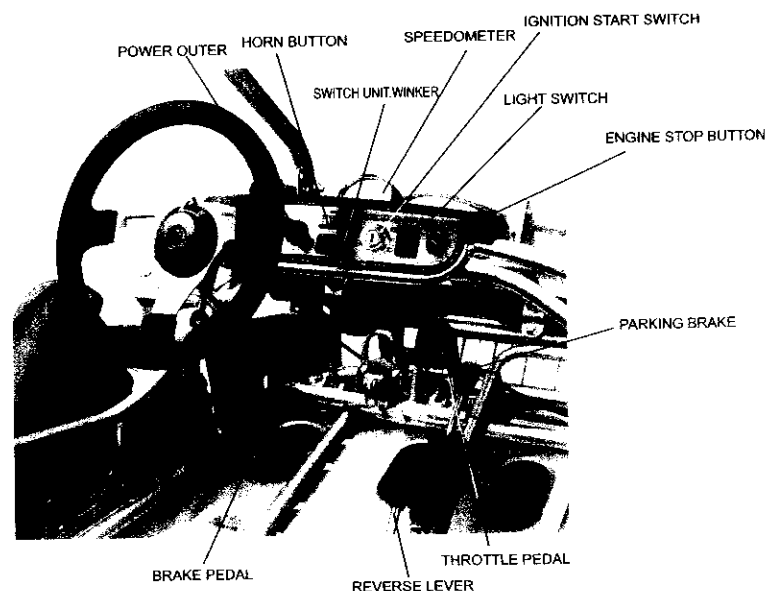


Figure 1

OPERATION

B. Pre-Drive Inspection



Perform this pre-drive inspection everyday before driving the vehicle. If not performed, serious damage to the vehicle or personal injury may result.

- a. Check the engine oil level is between the bottom of the dipstick and the "0" mark. Check for leaks. Add oil if required.
- b. Check the Fuel Level. Add fuel as necessary and do not overfill. Check for leaks. Ensure the fuel filler cap is securely fastened.
- c. Check the Brakes. Depress the left brake pedal several times, and check for adequate brake pedal freeplay. Make sure there is no brake fluid leakage.
- d. Check the tires. Check their condition for damage or excessive wear and pressure. The pressure on the front and rear tires is 15 and 20kPa respectively.
- e. Check the Drive Chain. Check its condition and tension. Lubricate if necessary.
- f. Check the Throttle Cable. Check for smooth operation. Ensure throttle "snaps" back to idle when released and moves smoothly without sticking.
- g. Check the Engine Stop Button. While the engine is running press and hold the engine stop button for 2 seconds. Make sure the engine stops.
- h. Check all Nuts, Bolts, and Fasteners. Check the wheels to see that all axle nuts and lug nuts are tightened properly. Check and tighten as necessary all other nuts, bolts and fasteners.
- i. Check the Brush Guard. Ensure all C.B.C. bars are in place before operating the kart.
- j. Check the Lights. Check the headlights, brake light and tail light are all working.
- k. Check the Steering. Check that the steering wheel moves freely in both directions but without any unusual looseness.
- l. Check all Cable Housings. Check these for wear and the fitting for any looseness.
- m. Check the underbody and exhaust system. Remove all dirt, vegetation and mud and check for any damage due to impact with rocks or uneven terrain.
- n. Check the Air Cleaner Housing Drain Tube. Check the deposits in the drain tube. If necessary, check the tube and air cleaner housing.
- o. Check Leaks and Loose Parts. Walk around your kart and look for anything that appears unusual, such as a leak or loose cable.
- p. Check the Parking Brake. Make sure the kart does not move forward or backward when the parking brake is applied.

Component locations

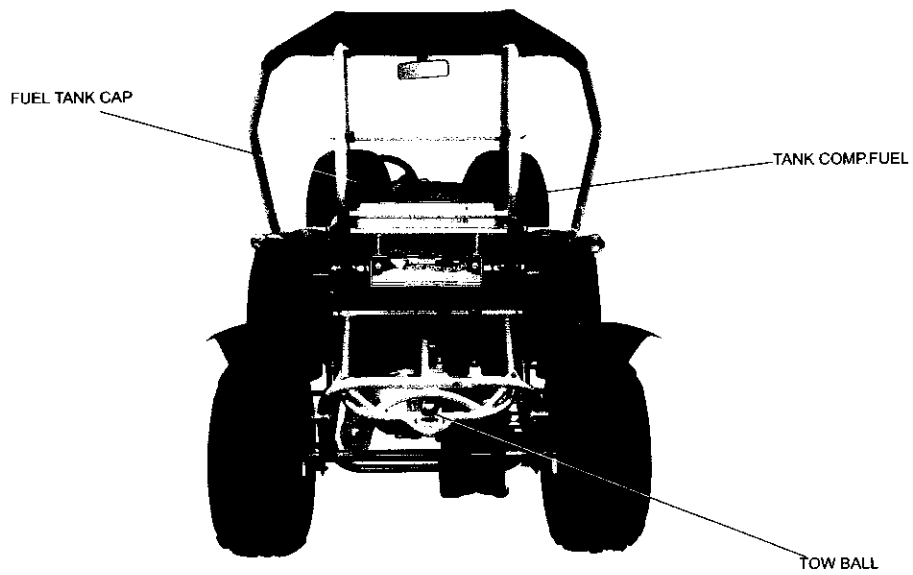
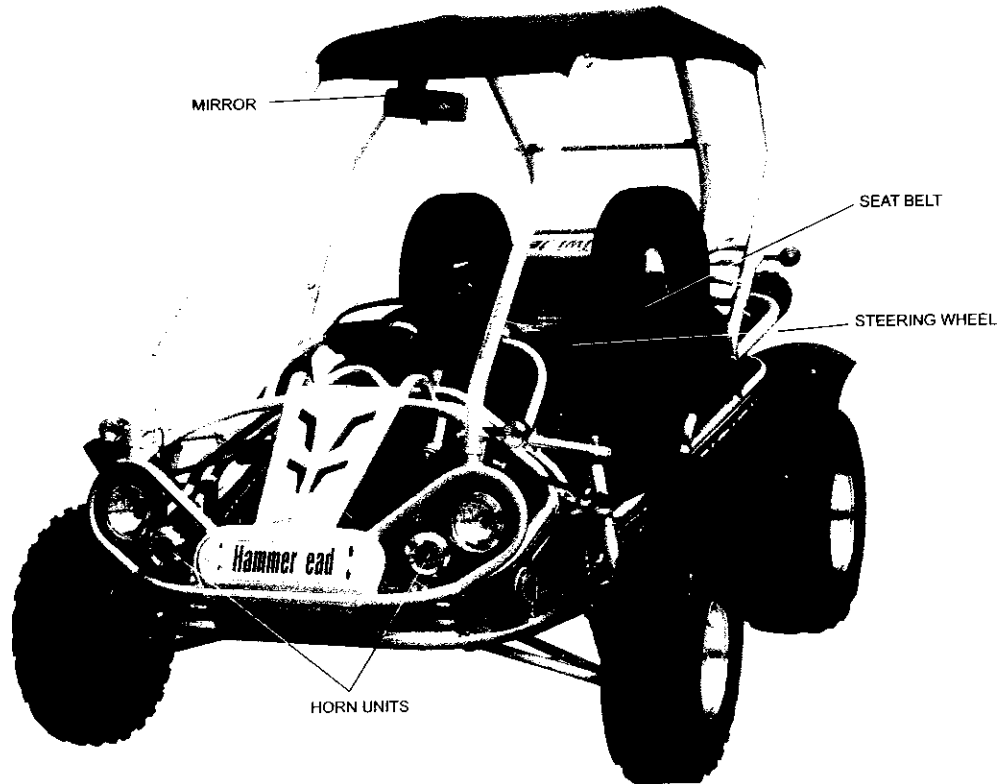


Figure 2

OPERATION

C. Passengers

The vehicle is designed for two people only. The combined maximum weight of the driver and the passenger should not exceed 180kg or 400lbs.

D. Seat Adjustment

The seat should be securely fastened in the position which gives the operator best control of the foot pedals, steering wheel, and the remote stop button.

- Pull the seat adjustment handle upward to disengage the seat slide.
- Move the seat to the desired position.
- Be sure that the seat adjustment handle snaps back into place and that seat is locked into position.

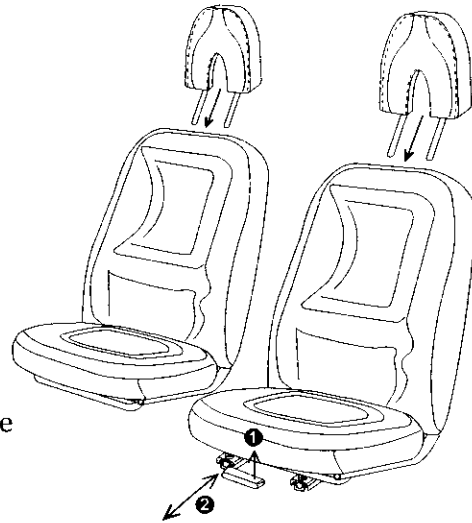


Figure 3

WARNING

Before attempting to adjust the seat, ensure that engine is stopped.

WARNING

Never operate this kart when the seat is not securely in place, to do so could result in personal injury or loss of life.

E. Forward and Reverse Gear

a. Push the reverse lever forward to the "D" position for the kart to move forward, pull the lever back to "R" for the kart to move backward. (See Fig.4)

b. When gear lever is in the drive position, there needs to be 1/2 inch of freeplay in the cable. If the adjustment is not correct, then loosen the lock nut #2, then adjust lock nut #1 to give the proper amount of freeplay.

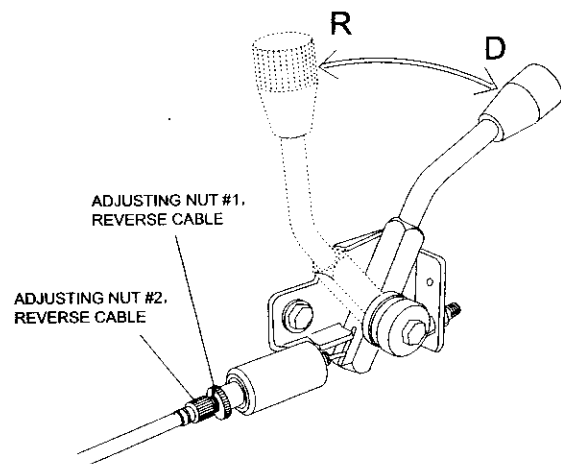


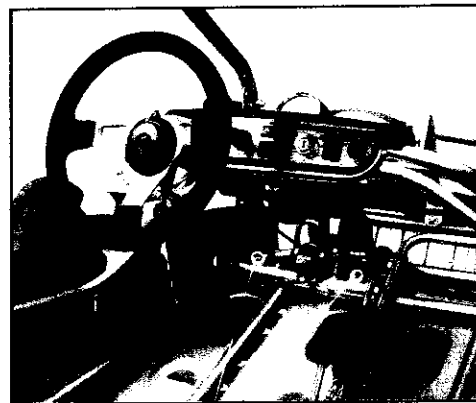
Figure 4

WARNING

Always stop the kart before changing gears.

F. Starting and Operating Instructions

- a. Before starting the engine, the driver must be seated properly in the kart with the seat belt on.
- b. Practice in the kart in an open space at the beginning to learn how to start, turn and stop the vehicle.
- c. Drive slowly until you are familiar with the operation of the kart.
- d. The turning radius of this kart is small and agile, so the centrifugal force is very high when turning at high speed. Slow down to a more controllable speed when turning to prevent the kart from rolling over. The driver should keep their heels on the ramp of the main board when turning. (See Fig.5) Keeping their leg on the foot pedal, the driver can feel that the kart is stable and won't roll over.



POSITION FOR HEEL

Figure 5

SERVICE INSTRUCTIONS

A. Air Cleaner

Service the air cleaner every 20 hours

NOTE: Service is required more often in dusty conditions.

- a. Remove cleaner cover 1.
- b. Remove air cleaner element 2 (See Fig.6)
- c. Fill the non-flammable cleaning agent into a basin and dip the element in it.
- d. Dry it after cleaning. Replace check for cracks or holes. It needs to be replaced with new filter.

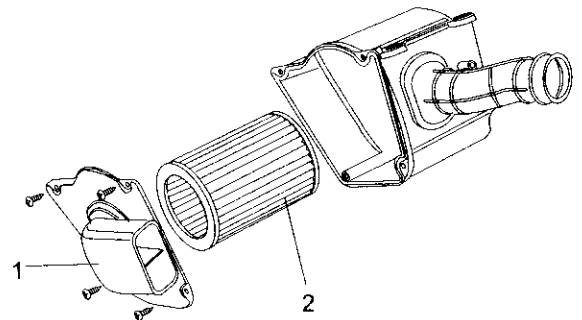
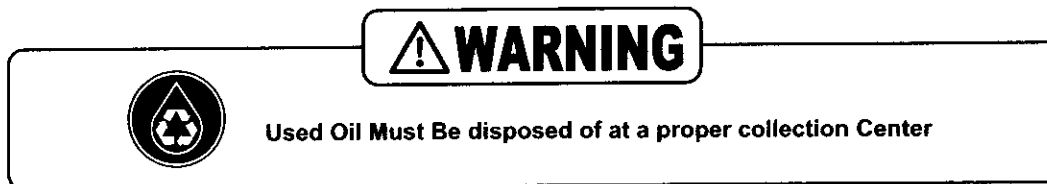


Figure 6

SERVICE INSTRUCTIONS

B. Engine Lubrication

You must change the oil in the crankcase after the first 5 hours of operating of your new engine (See Fig. 7) and after every 10 hours of use thereafter. This will insure proper lubrication of the internal parts and prevent costly repairs due to excessive wear.



- Remove the drain plug located on the right rear side of engine. Tip the kart backwards slightly by blocking up the front end and drain the oil into suitable container.
- Remove and clean the oil filter.
- Replace drain plug and tighten securely. Place the kart in a level position.
- Refill the crankcase (approximately 1 1/4 pint) to the top of the filler neck with SAE 10W40 oil.
- Check the oil level before each use of the kart or after each 10 hours of operation. Add oil when necessary to keep the level between the bottom of the dipstick and the "0" mark. Do not mix various grades of oil.

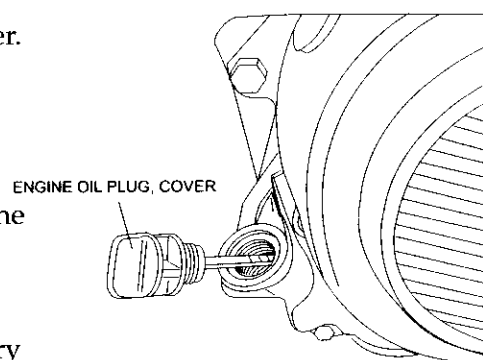


Figure 7

C. Spark Plug

- Remove the spark plug and inspect it each time you change the oil (Use a spark plug wrench). The electrodes should be kept clean and free of carbon. The presence of carbon or excess oil will greatly reduce engine performance. If possible, check the spark plug gap (area between electrodes) using a wire feeler gauge. This specification is 0.6-0.7mm.
- Before installing the spark plug coat the threads lightly with graphite grease if possible, to ensure easy removal next time the spark plug needs inspection.
- It is advisable to replace the spark plug at least once a year to ensure easy starting and good engine performance.

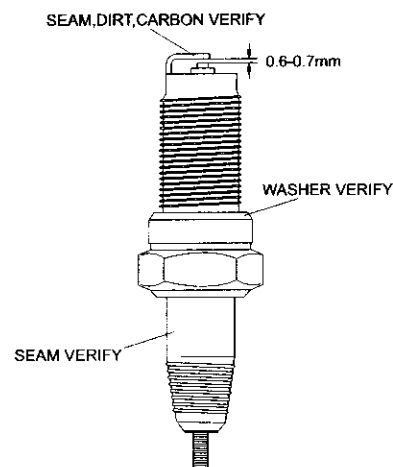


Figure 8

D. Carburetor Adjustment

Never make unnecessary adjustments. The factory recommended settings are correct for most applications.

- a. Warm up the engine (5~10min)
- b. Tighten the air screw gently. Backout 2-3/8 turns counter clockwise.
- c. Connect the tachometer, adjust the throttle to limit the idle speed. The standard value is 1400RPM.
- d. Turn the air screw counter clockwise slowly and observe the RPM of the engine, stop adjusting as the RPM reaches the top speed.
- e. Adjust the screw and adjust the idle speed to an ideal value.
- f. Recheck and readjust the idle speed if necessary.

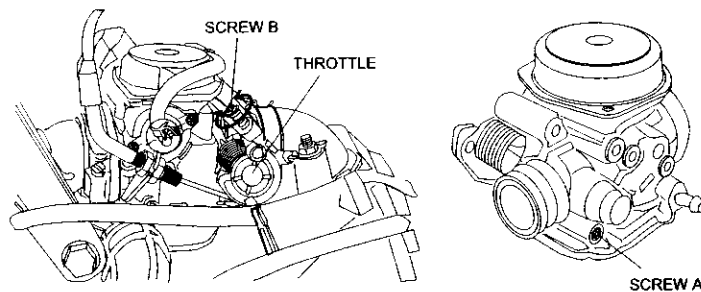


Figure 9

E. Cleaning Instructions

Keep your kart clean. With a clean rag, wipe off all dirt and oil from around the controls. Wipe off any spilled fuel and oil. Keep the engine clean of foreign objects, and be sure to check that the air intake fan is free of debris for proper cooling.

F. Buggy Lubrication

Lubricate the vehicle every 90 days of use. Lubrication should be done more often, if the kart is used everyday.

G. Chain Lubrication

To increase chain life, it should be lubricated with a spray on type chain lubricant. (See Fig. 10)

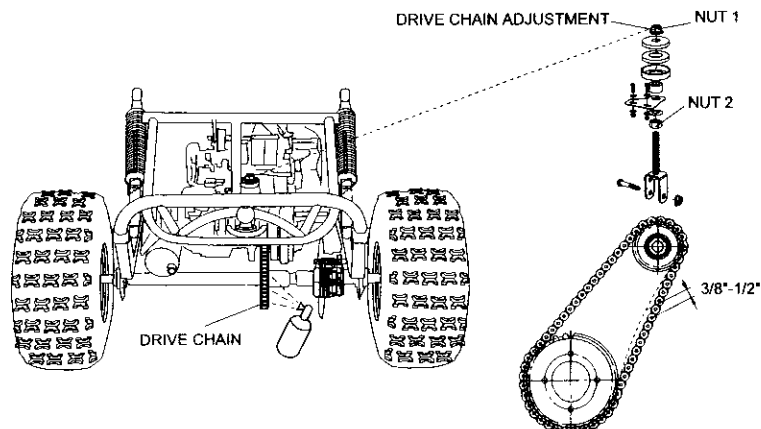


Figure 10

SERVICE INSTRUCTIONS

H. Chain Adjustment

Check the chain adjustment after the first two hours of use. Readjust if it has more than 1/2" flex.

- a. Loosen Nut #1
- b. Adjust Nut #2. Turn Nut #2 clockwise in 1/2 turn increments, then turn nut #1 until tight.
Follow this procedure until the chain is correctly tensioned (See Fig. 10).
- c. Repeat the above two steps until the chain is adjusted correctly.

I. Adjustment of Front And Rear Shock

There are five adjustable positions on each shock. The default position is in the middle set by manufacturer (See Fig. 11)

Use a round nut wrench as you adjust the shock, the tension of shock spring will increase as you screw to left, decrease as you screw to right. Adjust according to the weight of the riders.

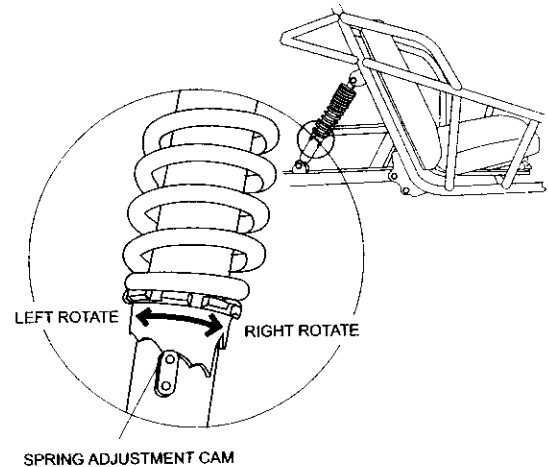


Figure 11

J. Storage Instruction

In the event your kart is not to be operated for a period in excess of 30 days or at the end of each driving season prepare for storage as follows:

- a. Drain fuel tank and carburetor by allowing engine to run out of fuel, and use a fuel stabilizer.
- b. Lubricate engine cylinder by removing the air cleaner, then spray engine fogging oil through the carburetor until the motor dies.
- c. Do not save or store gasoline over winter. Using old gasoline, which has deteriorated from storage, will make the engine difficult to start and affect engine performance.

WARNING

Do not drain fuel while engine is hot. Be sure to move the kart outside before draining fuel.

A. Front Wheel Replacement

Do not disassemble the castle nuts when you replace the front wheels.

It is only necessary to remove the 4 lug nuts to remove the wheel. (See Fig. 12)

Tighten the nuts after replacing the wheels.

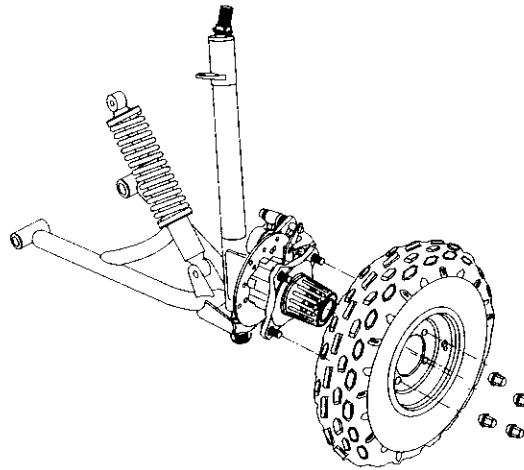


Figure 12

B. Rear Wheel Replacement

Do not disassemble the castle nuts when you replace the rear wheels and hub assembly.

Remove the cotter pin and then 24mm nut. Then slide off the wheel and hub assembly.

It is only necessary to remove the 4 lug nuts to remove the wheel.

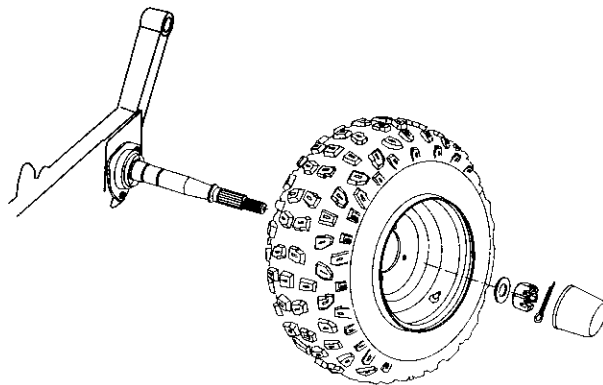


Figure 13

REPAIR

C. Front Wheel Alignment

a. The front wheels should be "toe-in" from 1/8" to 1/4". To check for alignment, measure distance A and B between the centerline (CL) of the wheels. The proper toe-in dimension A should be 1/8" - 1/4" greater than dimension B.

b. To adjust the alignments, loosen the lock nuts on both sides of Front Tie Rods. To make Dimension B smaller, turn the rod to left. Adjust the rod to right direction to make Dimension B larger. After adjusting to the desired length, tighten the lock nut against the rod end. Recheck the dimensions for proper alignment.

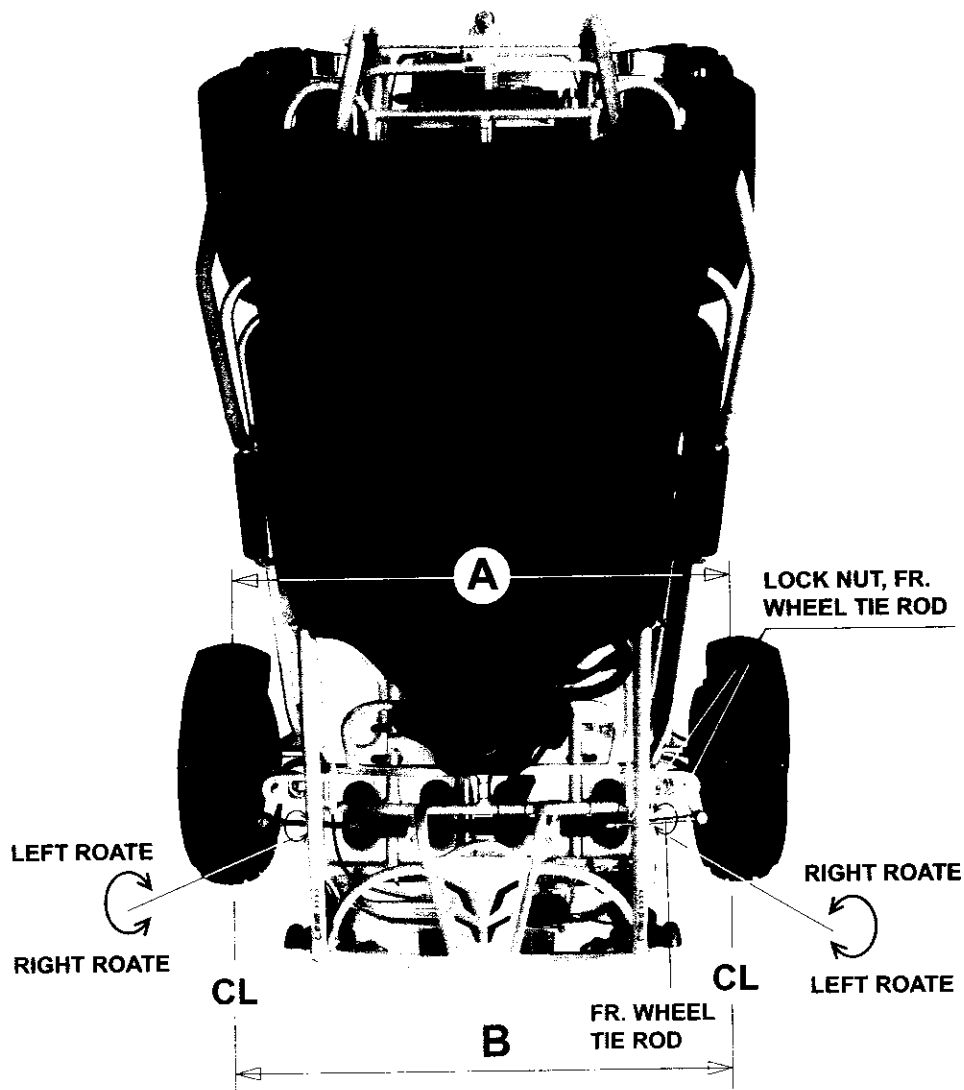


Figure 14

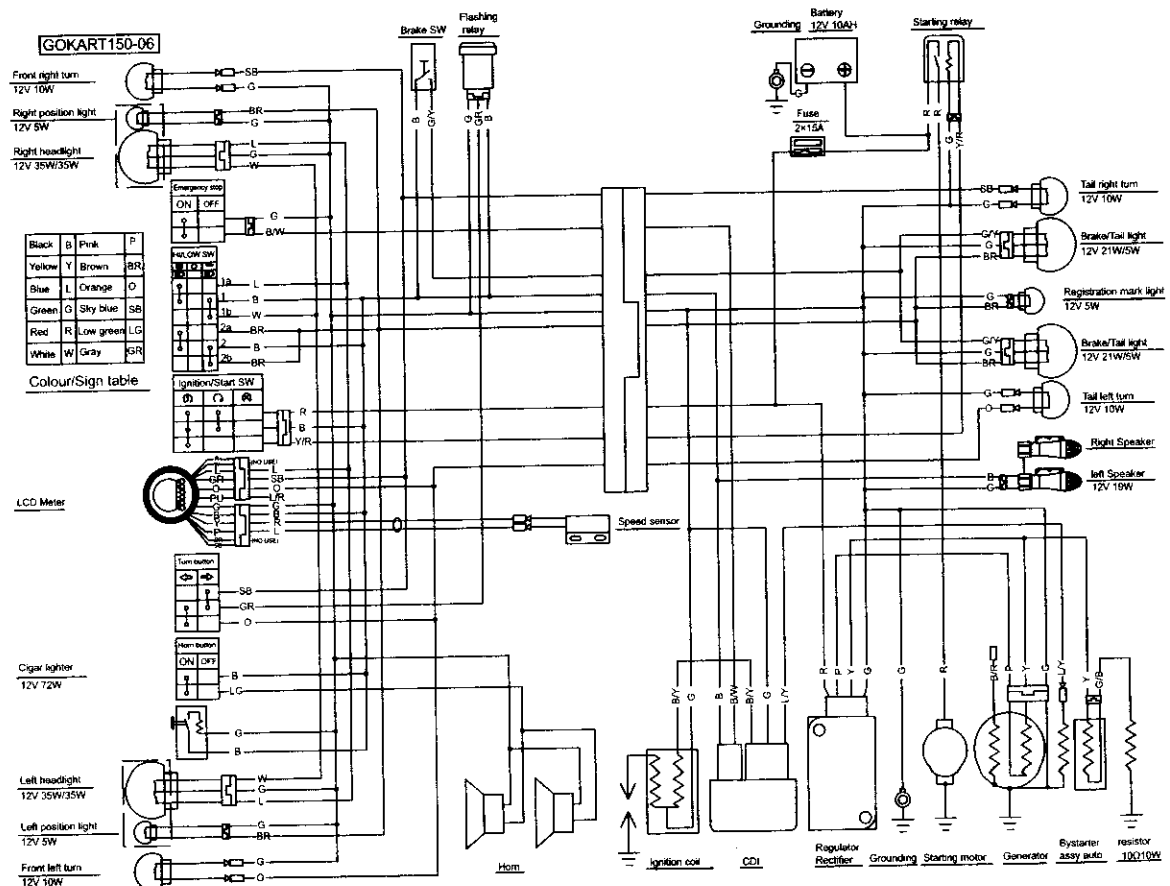
PERIODICAL CHECK AND SERVICES

The maintenance intervals in the following table are based upon average driving conditions. Driving in unusually dusty areas, require more frequent servicing.

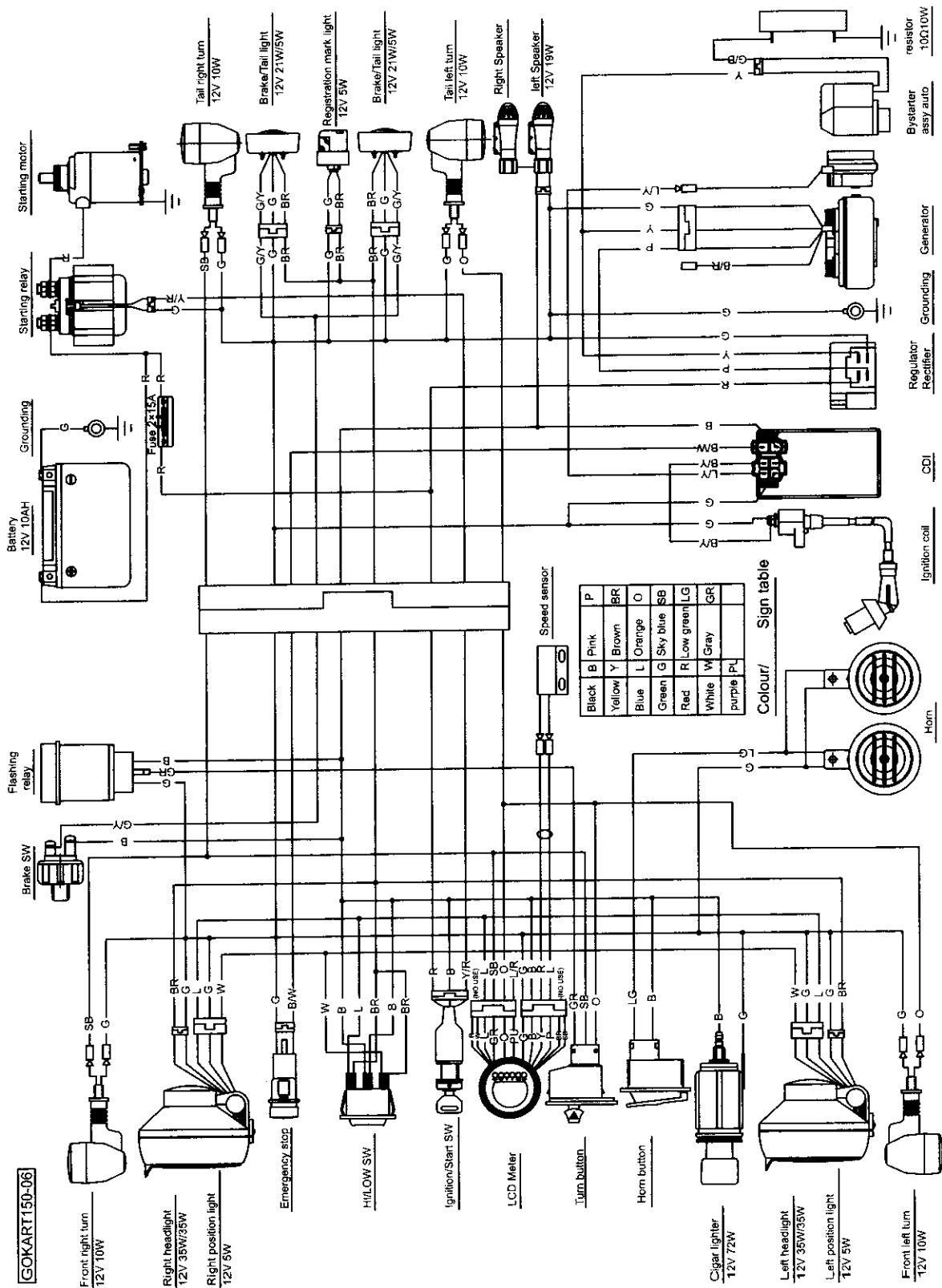
Items	Time of service	Initial service (first week)	Monthly	Quarterly	Yearly
Tire pressure/wear		I	I		
Brake performance		I	I		
Tightness of screws		I	I		
Air cleaner			C		R
Carburetor		I			C
Spark plug				C, A	
Coolent					
Brake oil		I	I	I	
Replace gearbox oil			C, I	R	
Chassis		I	I	L	
Fuel switch/fuel tank			I		C
Battery				I	
Valve clearance of engine				A	

A: adjust C: clean I: inspect, clean or replace if necessary. L: lubricate R: replace

WIRING DIAGRAM



WIRING DIAGRAM



COMPONENT LOCATIONS

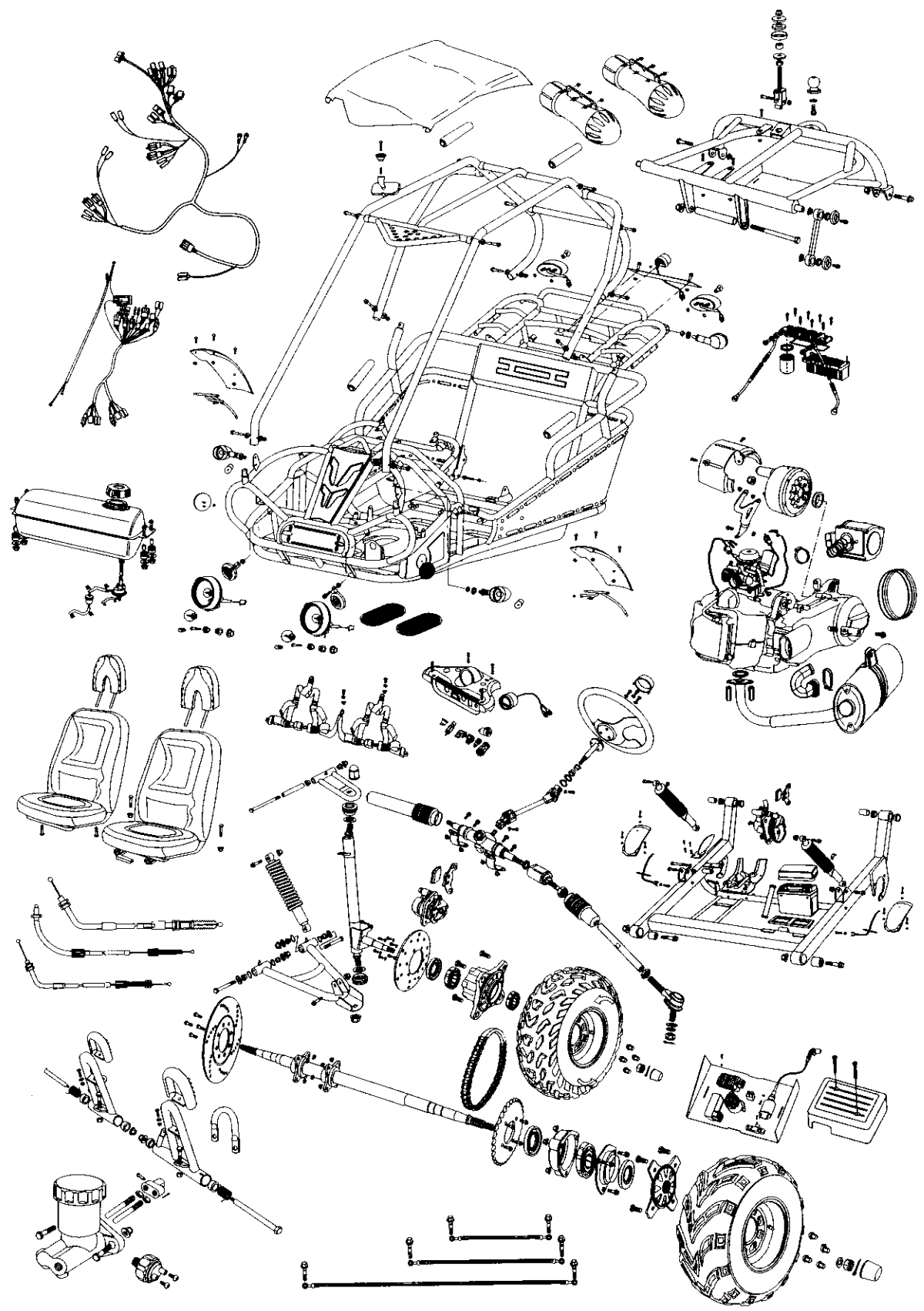
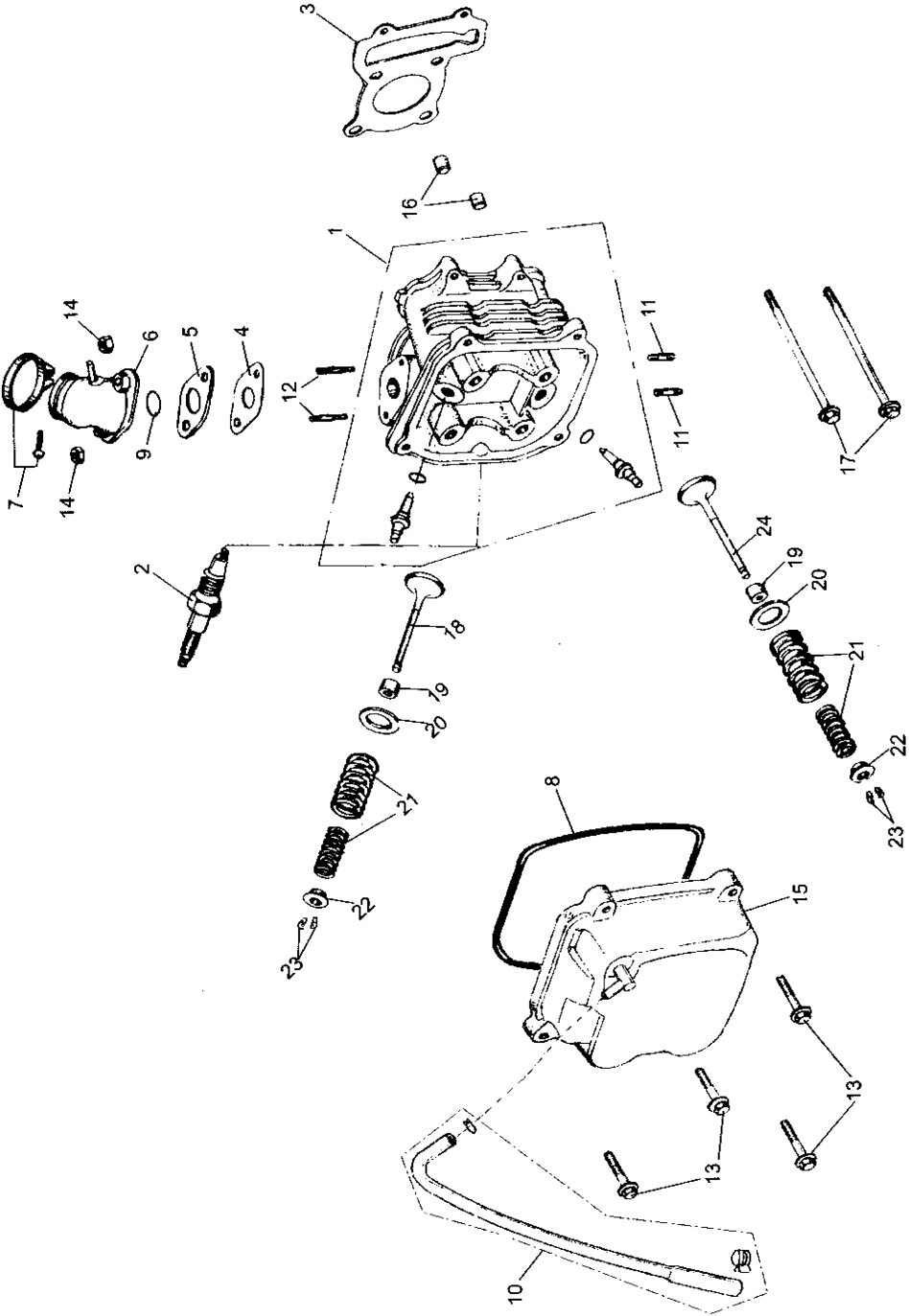
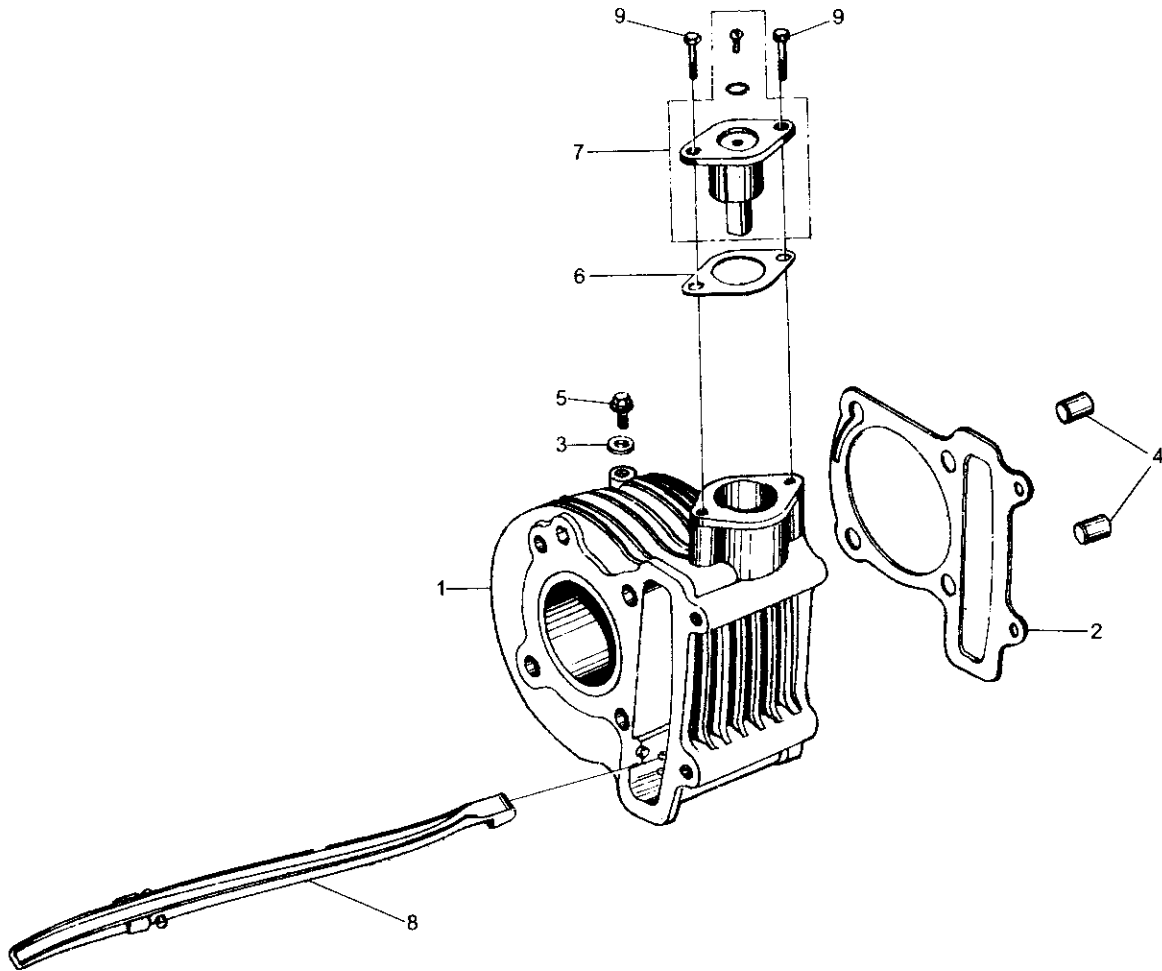


FIG. 1

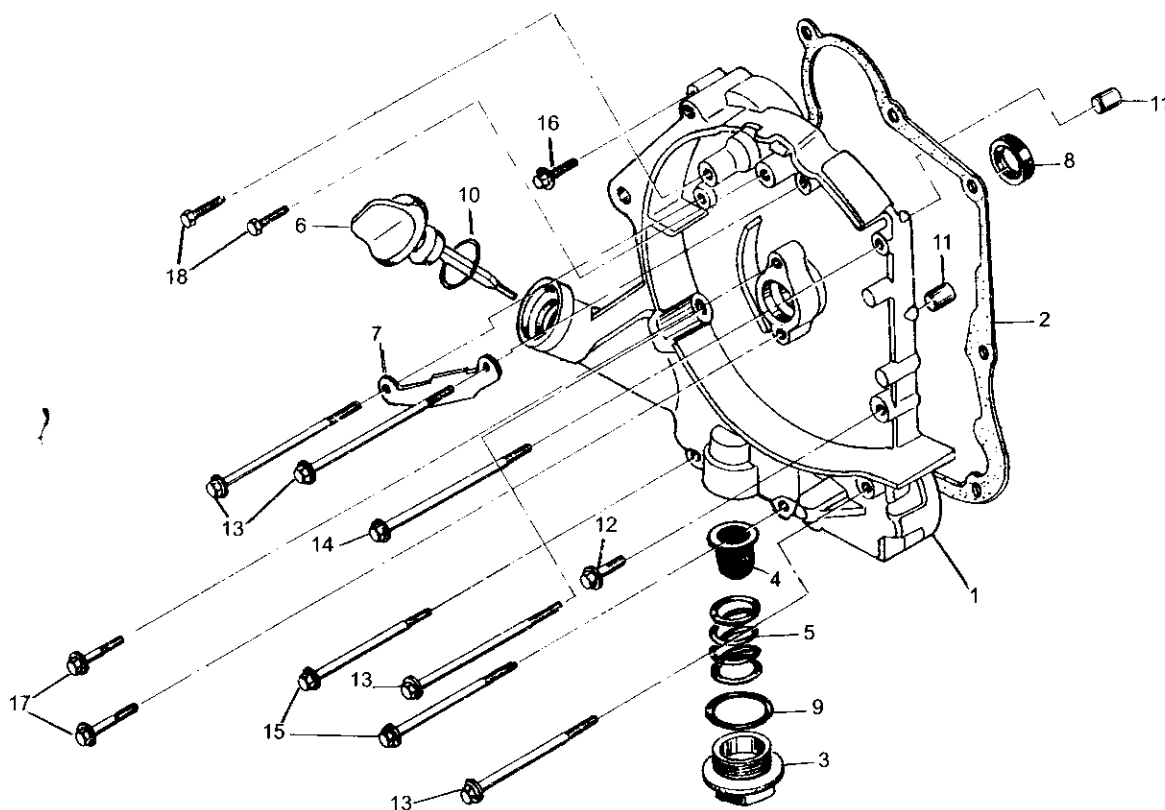
CYLINDER HEAD ASSY.



CYLINDER ASSY.



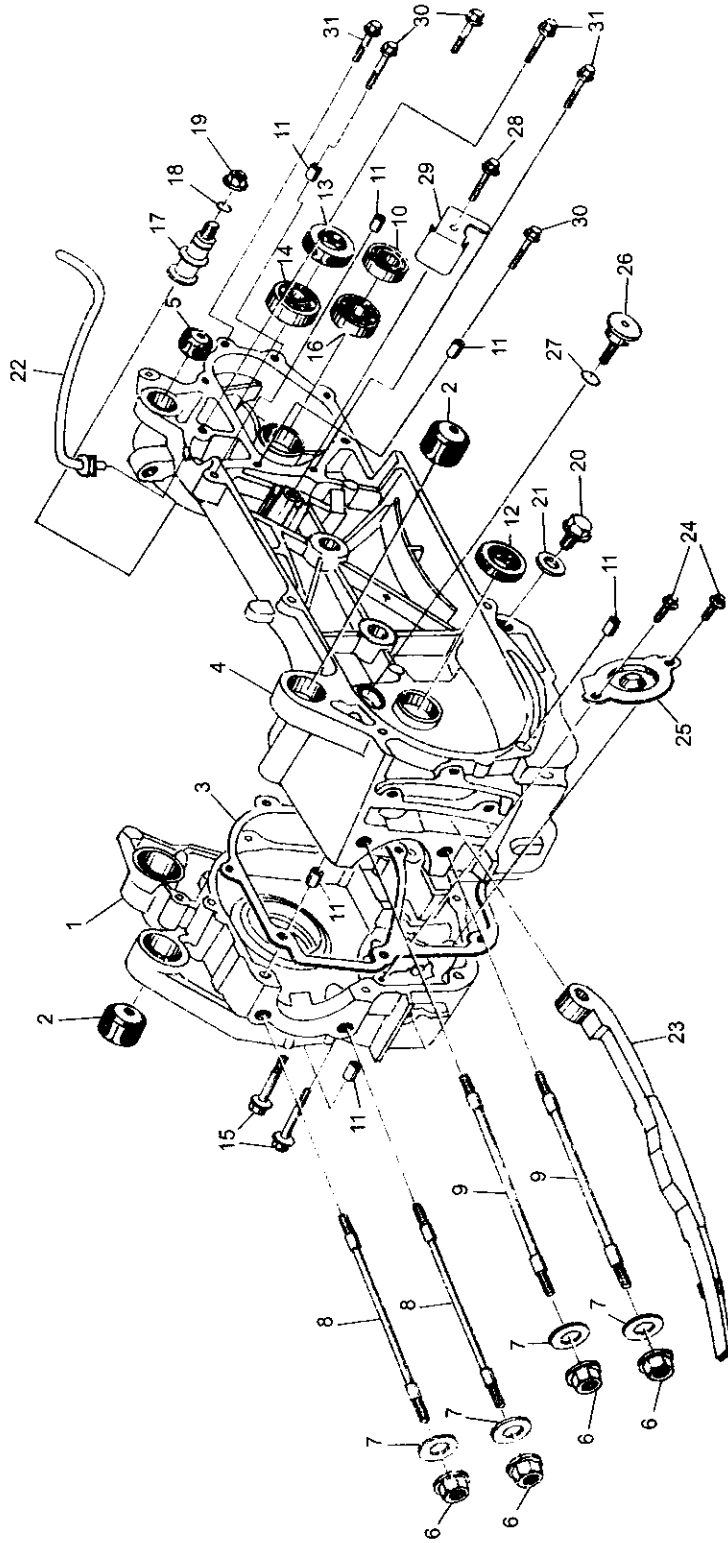
CYLINDER ASSY.				
REF NO.	PART NO.	DESCRIPTION	REGD NO.	
1	M150-1002200	CYLINDER COMP.	1	
2	M150-1002001	CYLINDER GASKET	1	
3	90442-06000-KAT	WASHER SEALING 6	1	
4	M150-1001007	DOWEL PIN 10X16	2	
5	96001-06012-KAT	FLANGE BOLT M6X12-ZN. D	1	
6	M150-1002002	GASKET TENSIONER LIFTER	1	
7	M150-1002100	TENSIONER LIFTER ASSY.	1	
8	M150-1002300	CAM CHAIN GUIDE COMP.	1	
9	96001-06020-KAT	FLANGE BOLT 6X20	2	

CRANKCASE ASSY. (1)

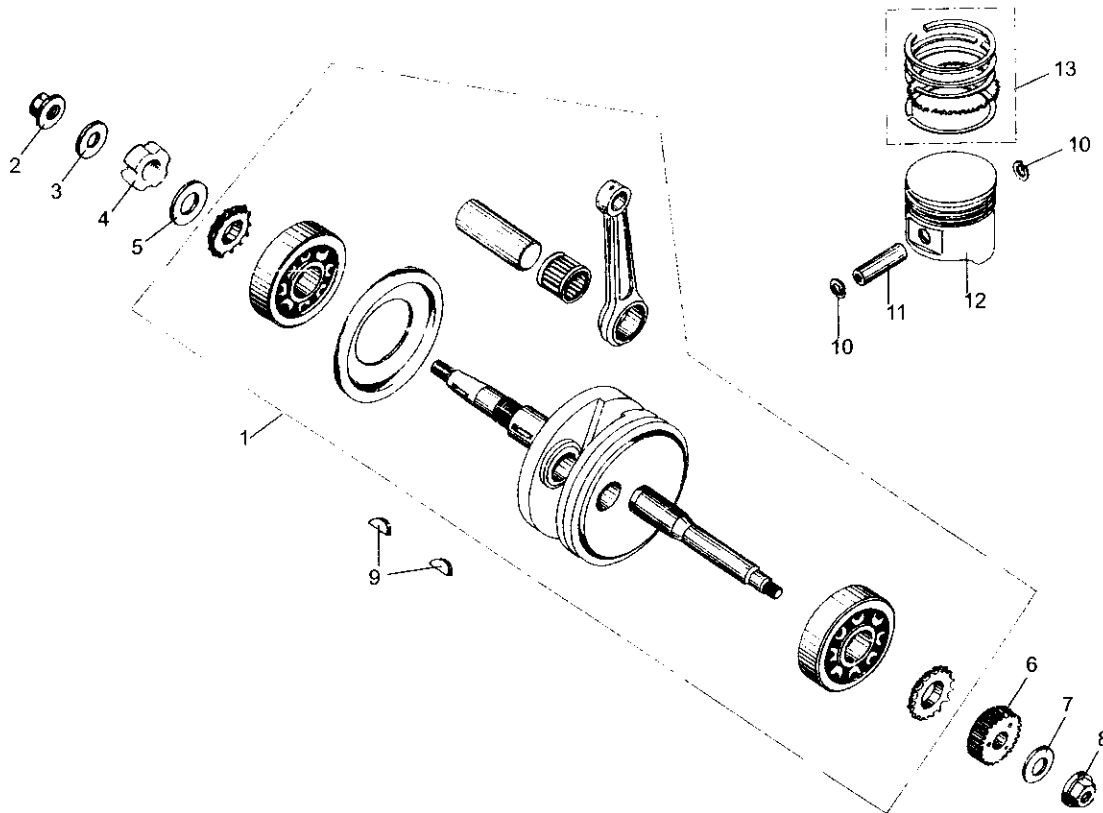
CRANKCASE ASSY.(1)			
REF NO.	PART NO.	DESCRIPTION	REGD NO.
1	M150-1003101-B	R CRANKCASE COVER COMP.	1
2	M150-1003013	CRANKCASE COVER GASKET	1
3	M150-1003104	CAP TAPPET ADJUSTING HOLE	1
4	M150-1003120	OIL FILTING SCREEN	1
5	M150-1003102	OIL FILTING SCREEN SPRING	1
6	M150-1003105	OIL LEVEL GAUGE	1
7	M150-1003006	AC GENERATOR CORD CLAMPER	1
8	M150-1003110	OIL SEAL 19.8X30X5	1
9	M150-1003103	O-RING 30.8X3	1
10	M150-1003307	O-RING 18X3	1
11	M150-1003005	DOWEL PIN 8X14	2
12	96001-06032-KAT	FLANGE BOLT M6X28	1
13	M150-1003012	FLANGE BOLT M6X95	4
14	M150-1003007	FLANGE BOLT M6X100	1
15	M150-1003008	FLANGE BOLT M6X110	2
16	M150-1003034	FLANGE BOLT M6X35	1
17	M150-1003106	FLANGE BOLT M6X20	2
18	92101-05012-OH	HEX BOLT M5X12-ZN.D	2

FIG.4

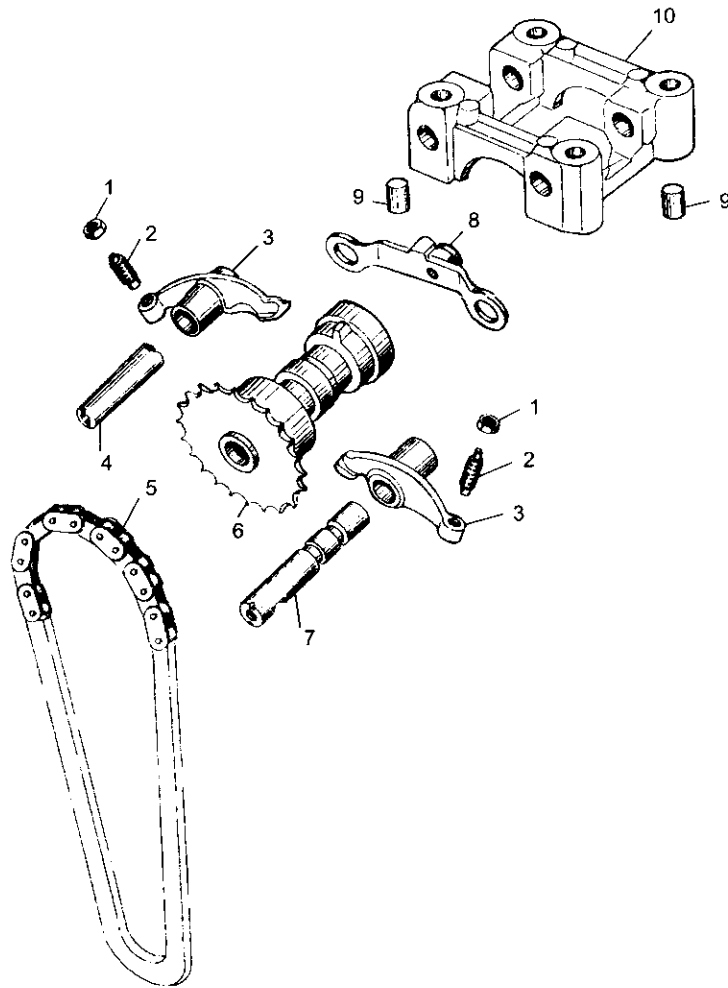
CRANKCASE ASSY. (2)



CRANKSHAFT CON'ROD & PISTON ASSY.

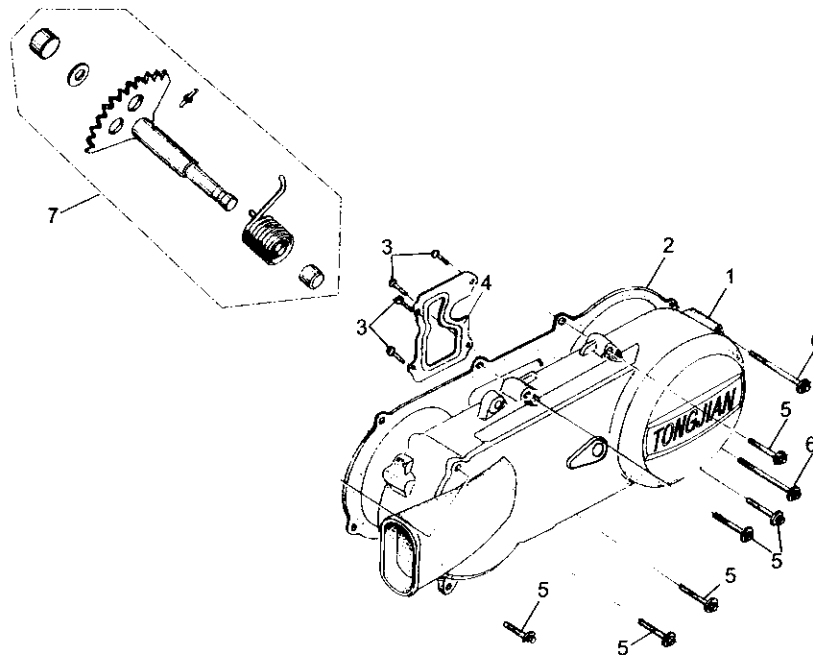


CRANKSHAFT CON'ROD & PISTON ASSY.			
REF NO.	PART NO.	DESCRIPTION	REGD NO.
1	M150-1004100	CRANKSHAFT & CONROD ASSY.	1
2	M150-1004007	NUT M12X1.25	1
3	M150-1004011	WASHER 12-149HV 12-140HV	1
4	M150-1004009	LOCKING NUT	1
5	M150-1004013	WASHER	1
6	M150-1004012	KICK DRIVE GEAR	1
7	M150-1040005	WASHER Φ 12	1
8	M150-1004008	NUT M12	1
9	M150-1004002	WOODRUFF KEY	2
10	M150-1004003	PISTON PIN CLIP	2
11	M150-1004006	PISTON PIN	1
12	M150-1004001	PISTON	1
13	M150-1004200	PISTON RING SET	1

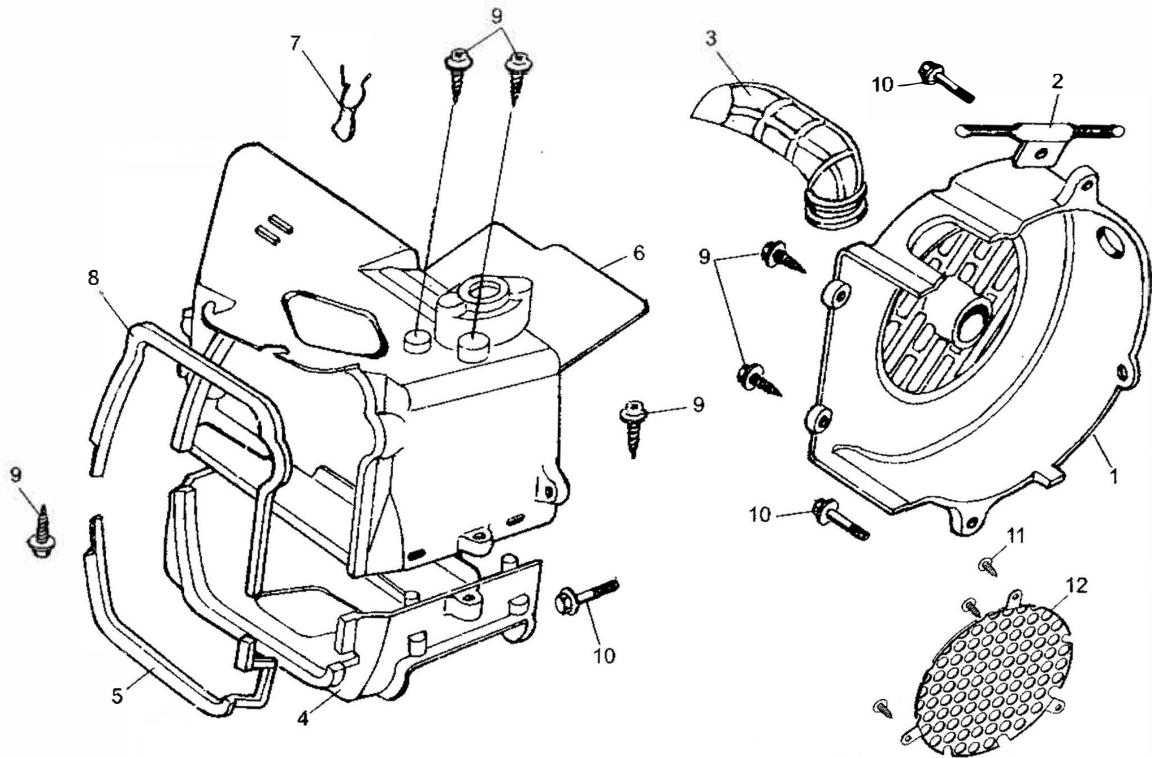
CAMSHAFT ASSY.

CAMSHAFT ASSY.				
REF NO.	PART NO.	DESCRIPTION	REGD NO.	
1	M150-1005004	TAPPET ADJUSTING NUT	2	
2	M150-1005003	TAPPET ADJUSTING SCREW	2	
3	M150-1005002	VALVE ROCKER ARM	2	
4	M150-1005005	EX ROCKER ARM SHAFT	1	
5	M150-1005400	CAMSHAFT CHAIN	1	
6	M150-1005300	CAMSHAFT COMP. 16T	1	
7	M150-1005200	IN ROCK ARM SHAFT COMP.	1	
8	M150-1005100	STOPPER PLATE COMP.	1	
9	M150-1001007	DOWEL PIN 10X16	2	
10	M150-1005001	CAMSHAFT HOLDER	1	

LEFT COVER ASSY.

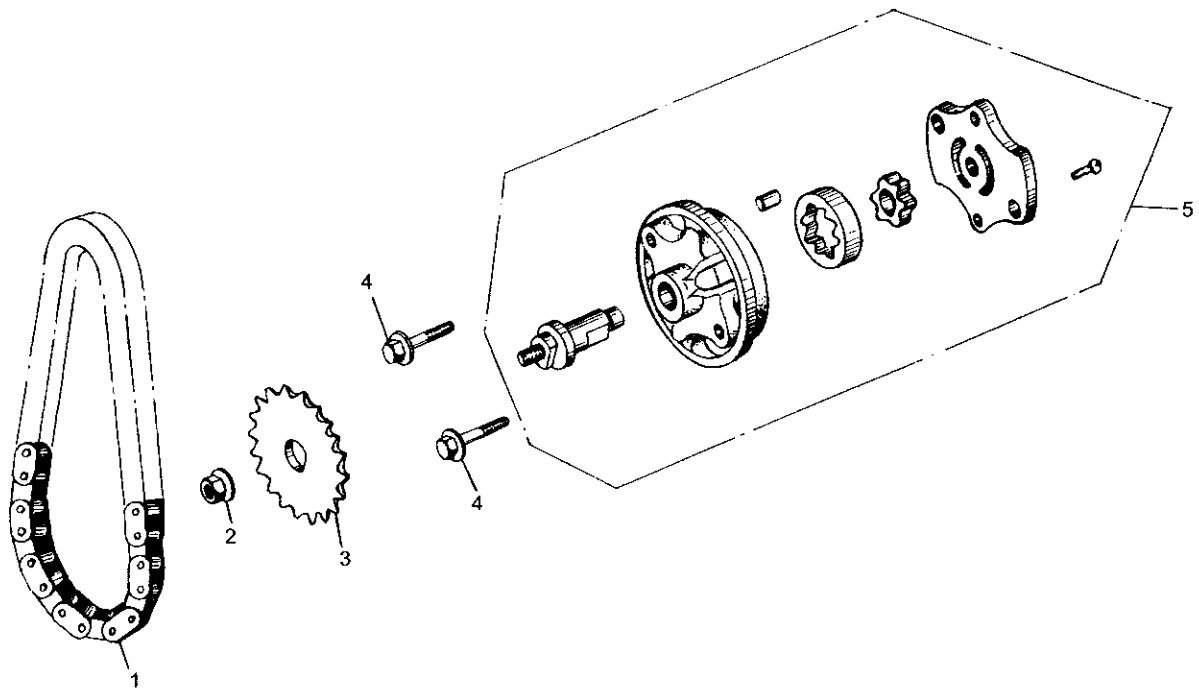


LEFT COVER ASSY.				
REF NO.	PART NO.	DESCRIPTION	REGD NO.	
1	M150-1008101	COVER L	1	
2	M150-1008005	L COVER GASKET	1	
3	93903-00428-KAT	TAPPING SCREW ST4.2X8-F-H	4	
4	M150-1008102	L COVER PLATE	1	
5	M150-1003034	FLANGE BOLT M6X40	6	
6	M150-1008006	FLANGE BOLT M6X65	2	
7	M150-1008200	KICK STARTER ASSY. SPINDLE COMP.	1	

FAN COVER AND SHROUD ASSY.

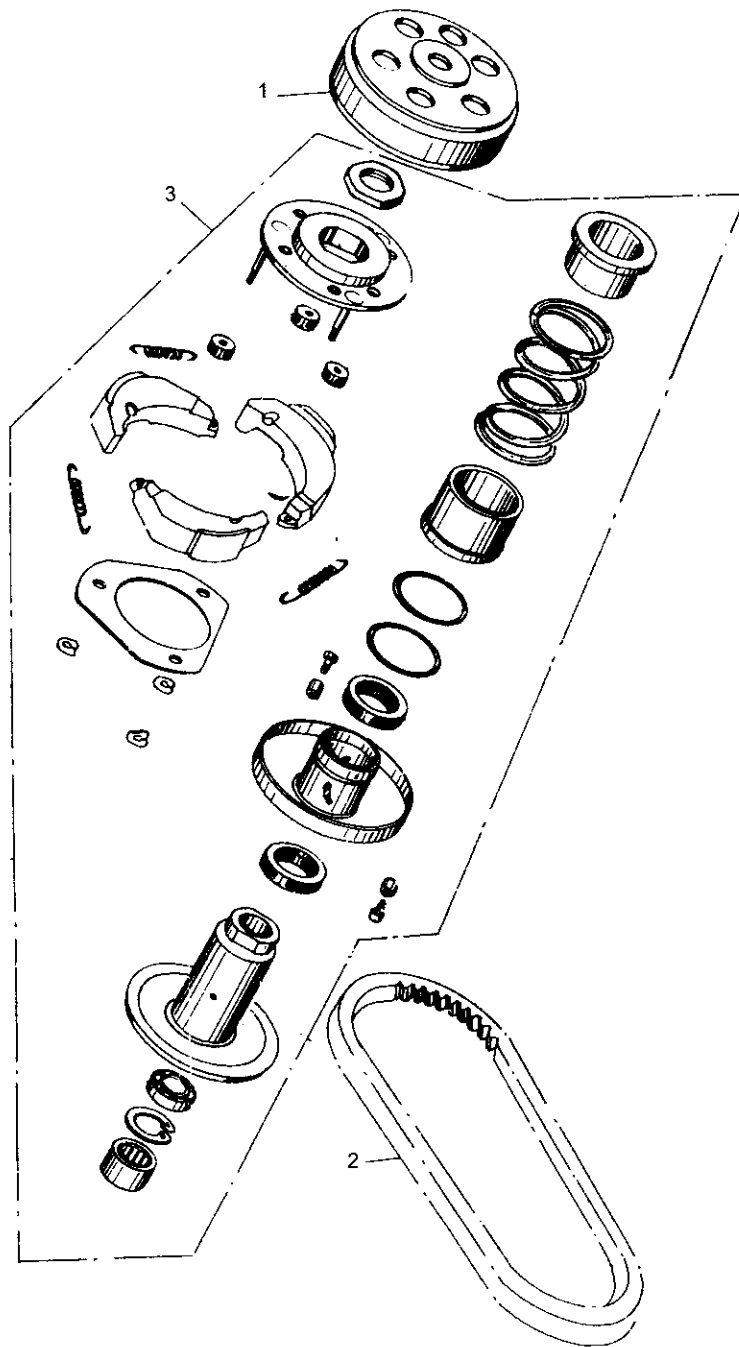
FAN COVER AND SHROUD ASSY.			
REF NO.	PART NO.	DESCRIPTION	REGD NO.
1	M150-1009410	FAN COVER COMP.	1
2	M150-1009002	STARTER CABLE CLAMPER	1
3	M150-1009401	FAN SHROUD COOLING DUCT	1
4	M150-1009301	LOWER SHROUD	1
5	M150-1009302	LOWER SHROUD SEAL	1
6	M150-1009110	UPPER SHROUD COMP.	1
7	M150-1009103	HIGH TENSION CORD CLIP	1
8	M150-1009102	UPPER SHROUD SEAL	1
9	M150-1009402	SCREW ST4.8X16-F	6
10	M150-1003075	BOLT M6X25	3
11	ST3.5X13 GB845	SCREW ST3.5×13-F	3
12	8.020.179	DUST COVER	1

OIL PUMP ASSY.



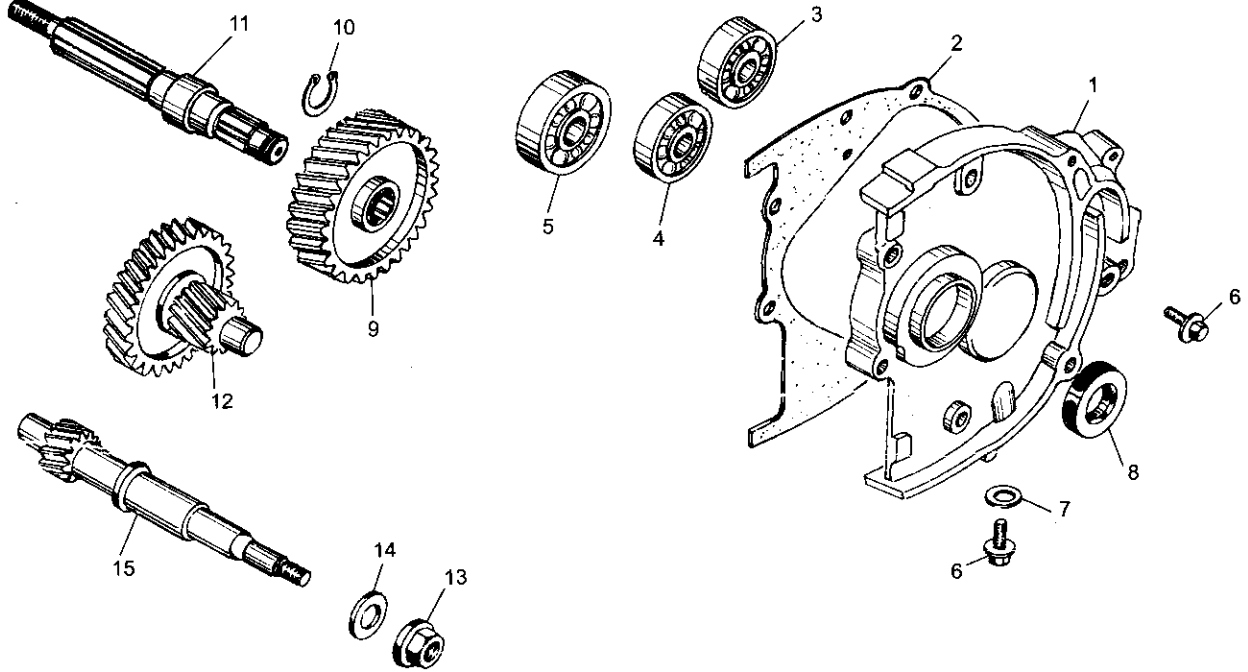
OIL PUMP ASSY.				
REF NO.	PART NO.	DESCRIPTION	REGD NO.	
1	M150-1021000	OIL PUMP CHAIN	1	
2	M150-1020002	FLANGE NUT M6	1	
3	M150-1020001	OIL PUMP DRIVEN SPROCKET	1	
4	M150-B-1003075	BOLT M6X25	2	
5	M150-1022000	OIL PUMP SUBASSY.	1	

DRIVEN PULLEY AND CLUTCH SUBASSY.



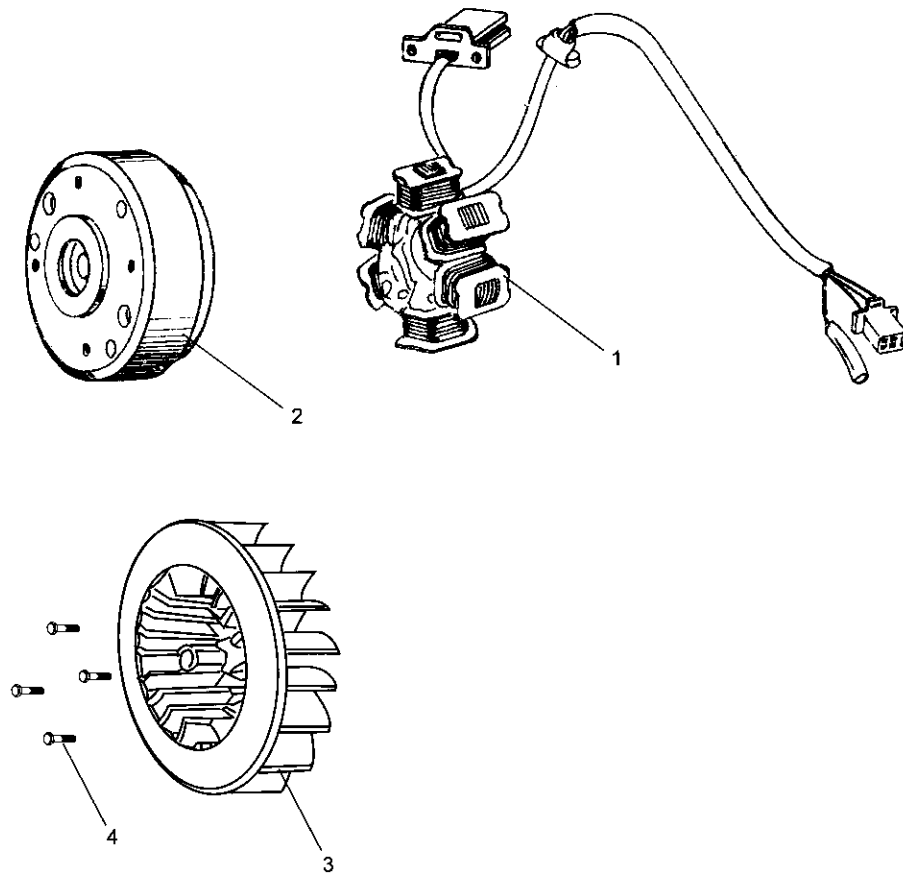
DRIVEN PULLEY AND CLUTCH SUBASSY.				
REF NO.	PART NO.	DESCRIPTION	REGD NO.	
1	M150-1032000	CLUTCH ASSY. OUTER	1	
2	M150-1033000	DRIVE BELT	1	
3	M150-1031000	DRIVEN PULLEY ASSY.	1	

TRANSMISSION ASSY.



TRANSMISSION ASSY.				
REF NO.	PART NO.	DESCRIPTION	REGD NO.	
1	M150-1040001	TRANSMISSION COVER	1	
2	M150-1041000	TRANSMISSION COVER GASKET	1	
3	91004-E6203-KAT	RADIAL BALL BEARING E6203	1	
4	91004-E6202-KAT	RADIAL BALL BEARING E6202	1	
5	91004-E6204-KAT	RADIAL BALL BEARING E6204	1	
6	M150-1040008	SPECIAL BOLT M8X12	2	
7	M150-1040002	WASHER Φ8	1	
8	M150-1042000	OIL SEAL 20X32X6	1	
9	M150-1040004	FINAL GEAR	1	
10	94510-20000	EXTERNAL CIRCLIP 20	1	
11	M150-1040003	FINAL SHAFT	1	
12	M150-1043000	COUNTER SHAFT COMP.	1	
13	M150-1040007	COMPRESSOR FLANGE NUT M12	1	
14	M150-1040005	WASHER Φ12	1	
15	M150-1040006	DRIVE SHAFT	1	

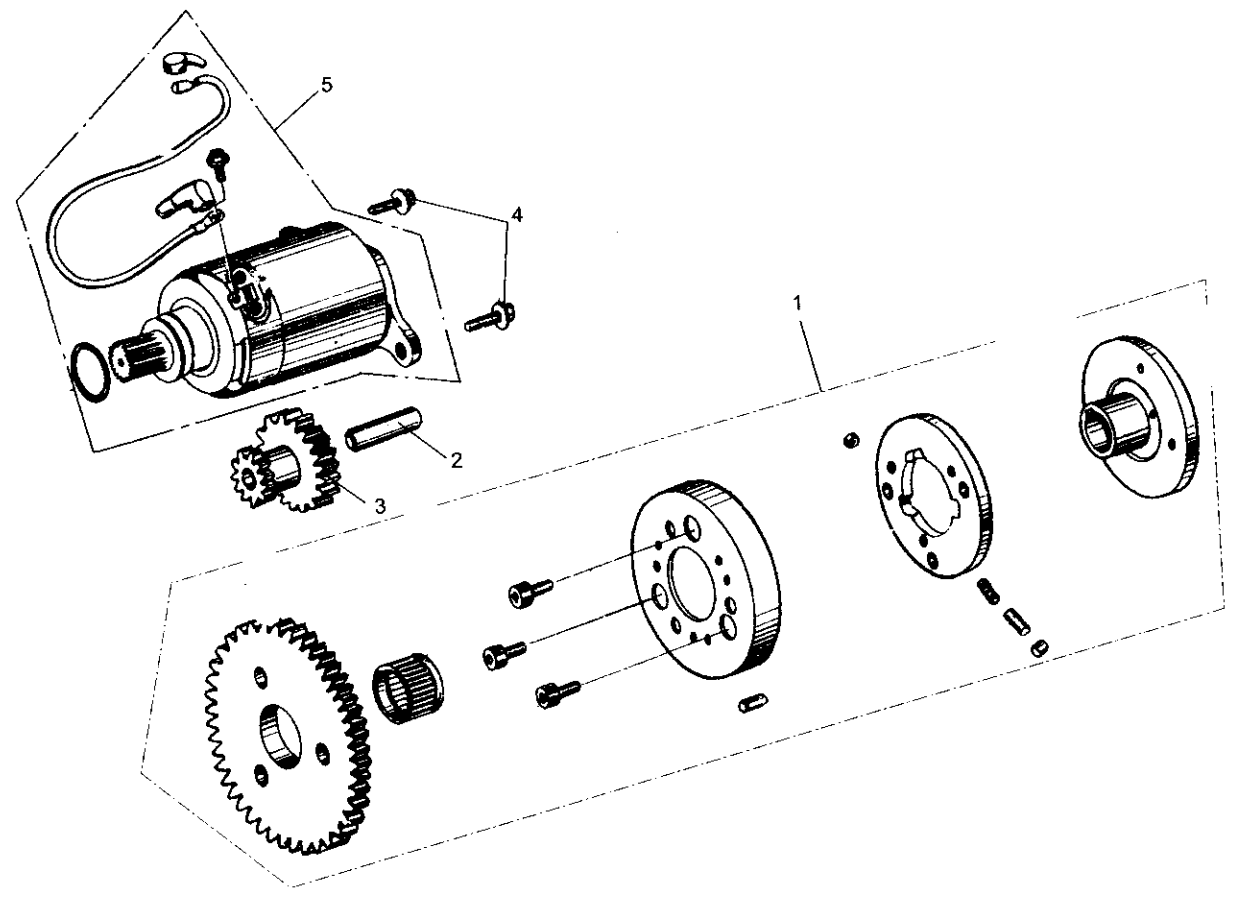
ELECTRIC SYSTEM



ELECTRIC SYSTEM				
REF NO.	PART NO.	DESCRIPTION	REGD NO.	
1	M150-1051200-8	STATOR COMP.	1	
2	M150-1051100	FLYWHEEL COMP.	1	
3	M150-1051100-3	COOLING FAN COMP.	1	
4	M150-1051100-4	FLANGE BOLT M6x18	4	

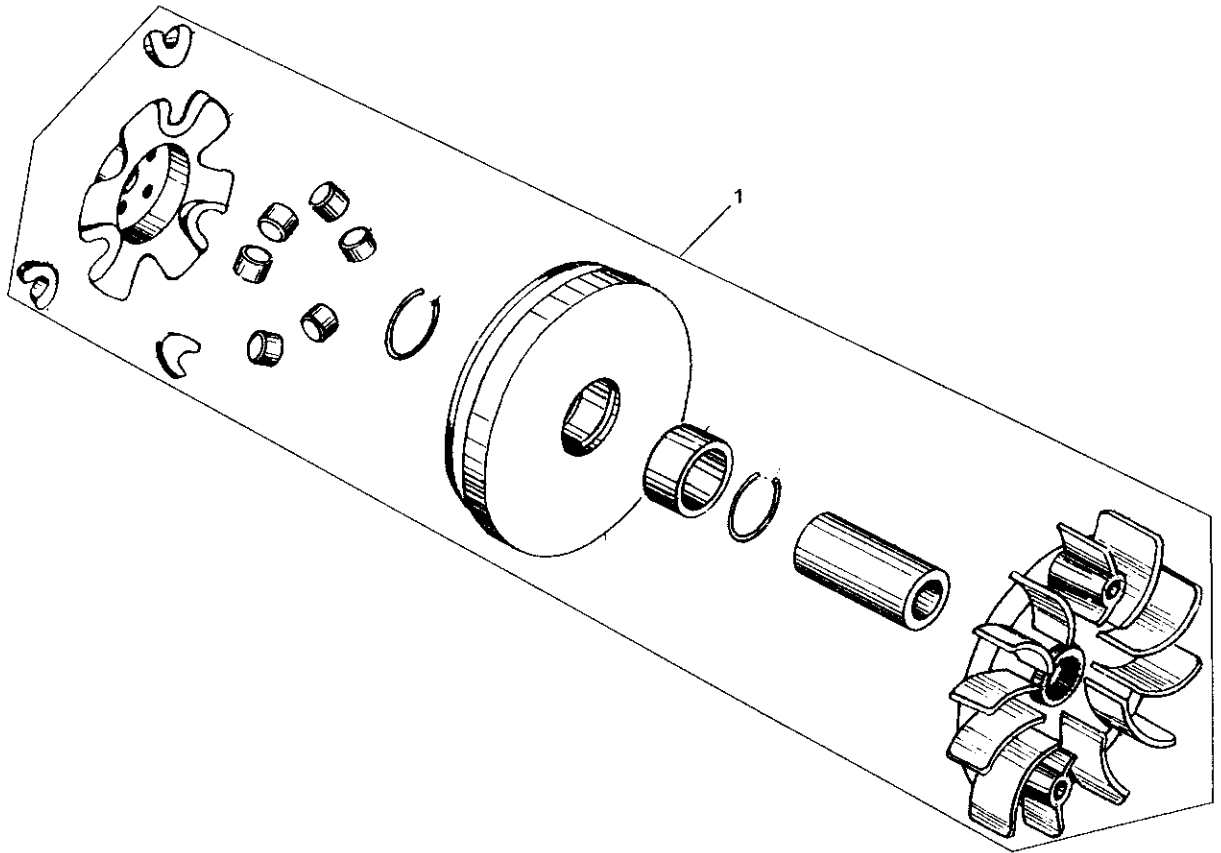
FIG.13

ELECTRIC STARTER ASSY.



ELECTRIC STARTER ASSY.				
REF NO.	PART NO.	DESCRIPTION	REGD NO.	
1	M150-1060001	FLANGE STARTING CLUTCH	1	
2	M150-1060002	STARTER REDUCTION GEAR SHAFT	1	
3	M150-1060003	STARTER REDUCTION GEAR	1	
4	M150-1060005	FLANGE BOLT M6X16	2	
5	M150-1064000	STARTER MOTOR ASSY.	1	

DRIVE PULLEY SUBASSY.



DRIVE PULLEY SUBASSY.				
REF NO.	PART NO.	DESCRIPTION	REGD NO.	
1	M150-1071000	MOVABLE DRIVE PULLEY ASSY.	1	

FIG. 15

CARBURETOR

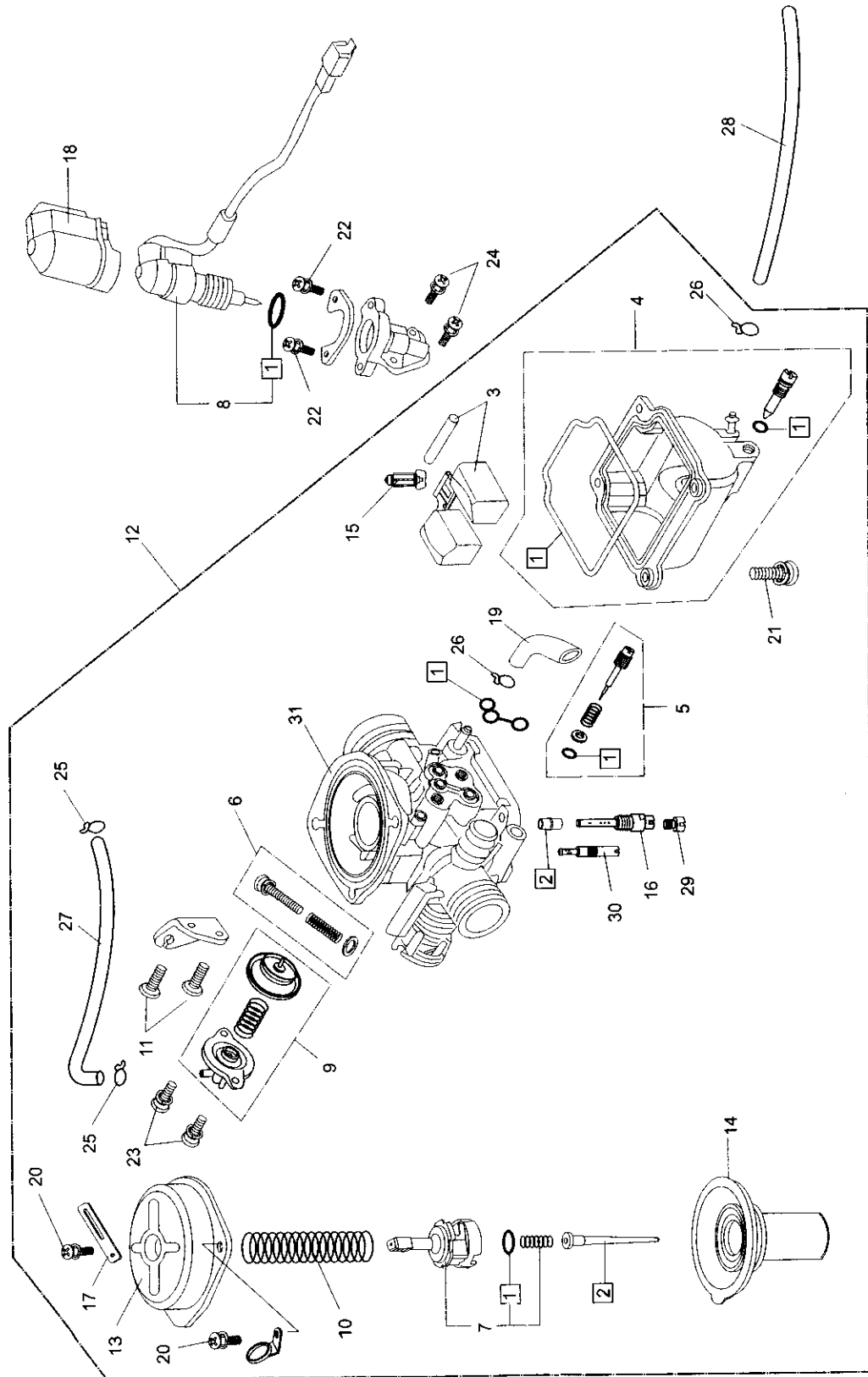
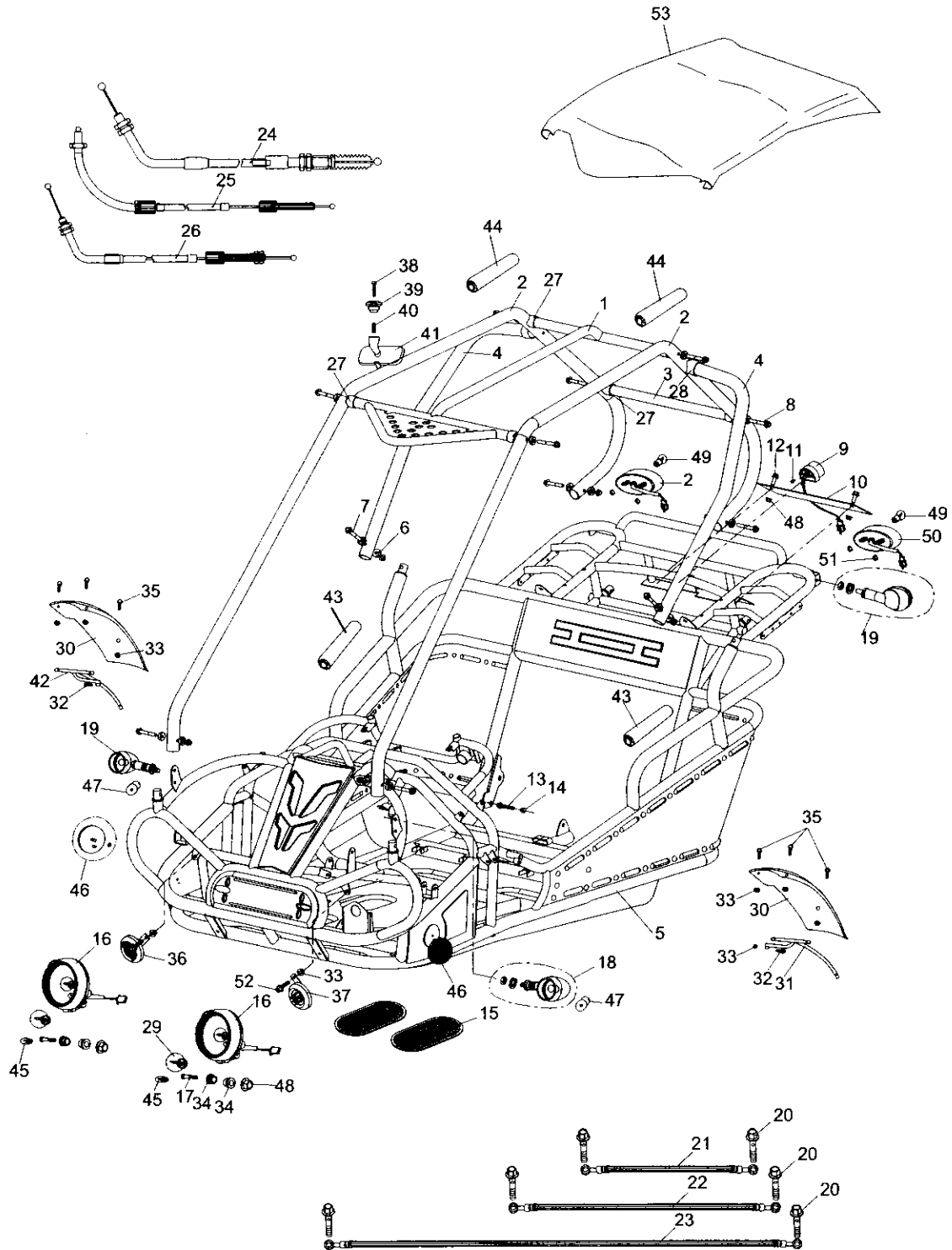


FIG.16

FRAME GROUP



FRAME GROUP				
REF NO.	PART NO.	DESCRIPTION	REGD NO.	
1	6.000.261	C.B.C. CROSS BAR, FR (B.R.S.)	1	
2	8.070.049	C.B.C. BAR CAGE (B.R.S.)	2	
3	8.080.042	C.B.C. CROSS BAR, RR (B.R.S.)	1	
4	8.070.048	C.B.C. BAR, L/R. SIDE (B.R.S.)	2	
5	2.000.048	FRAME COMP. (B.R.S.)	1	
6	8.010.047	R-WASHER	18	
7	9.908.050N	SOCKET BOLT M8 x 1.25 x 50	6	
8	9.908.055N	SOCKET BOLT M8 x 1.25 x 55	10	
9	6.000.241	LICENSE LIGHT ASSY.	1	
10	7.010.065	LICENSE PLATE	1	
11	9.804.003	SCREW ST3.5x10	2	
12	9.108.020	BOLT M8 x 20	2	
13	9.112.025	BOLT-WASHER M12 x 1.25 x 25	2	
14	9.220.012	LOCKING FLANGE NUT M12	2	
15	7.020.012	RUBBER FOOT PLATE	2	
16	6.000.104	HEADLIGHT UNIT	2	
17	9.108.050	BOLT-WASHER M8 x 1.25 x 50	2	
18	6.000.155	WINKER LIGHT ASSY. L. FR./R.RR.	2	
19	6.000.156	WINKER LIGHT ASSY. R. FR./L.RR.	2	
20	9.700.004	BANJO BOLT M10x24	6	
21	6.000.089	BRAKE HOSE ASSY. L. 34"	1	
22	6.000.090	BRAKE HOSE ASSY. R. 43"	1	
23	6.000.230	BRAKE HOSE ASSY. RR. 80"	1	
24	6.000.232	THROTTLE CABLE COMP.	1	
25	6.000.040	REVERSE CABLE COMP.	1	
26	6.000.231	PARKING BRAKE CABLE COMP.	1	
27	7.010.017	TUBE SEAT Φ 25	6	
28	7.010.016	TUBE SEAT Φ 32	2	
29	9.090.003	HEADLIGHT BULB 35W/35W/ 12V	2	
30	7.010.034	FENDER, FR.	2	
31	6.000.067	FRONT FENDER BRACKET, L.	1	
32	9.100.640	BOLT M6 x 40	2	
33	9.210.008	LOCKING FLANGE NUT M6	10	
34	7.020.049	HEADLIGHT RUBBER MOUNT	4	
35	9.106.014	BOLT-WASHER M6 x 14	6	
36	6.000.135	HORN, H.	1	
37	6.000.136	HORN, L.	1	
38	9.100.525	BOLT M5 x 25	1	
39	8.010.086	REAR MIRROR MOUNT	1	
40	8.040.005	REAR VIEW MIRROR SPRING	1	
41	6.000.084	REAR MIRROR ASSY.	1	
42	6.000.102	FRONT FENDER BRACKET, R.	1	
43	6.000.083	FOAM PADDING-1	2	
44	6.000.116	FOAM PADDING-2	2	
45	9.000.004	POSITION LIGHT BULB 3W 12V	2	
46	6.000.114	FRONT REFLECTOR	2	
47	9.090.006	WINKER BULB 10W 12V	4	
48	9.220.008	NUT M8	4	
49	9.090.005	TAIL LIGHT BULB 21W/5W 12V	2	
50	6.000.144	TAIL LIGHT	2	
51	9.210.006	LOCK NYLON NUT M6	4	
52	9.106.012	BOLT M6 x 12	2	
53	6.000.269	BIKINI TOP	1	

FIG.17

STEERING SHAFT ASSY.

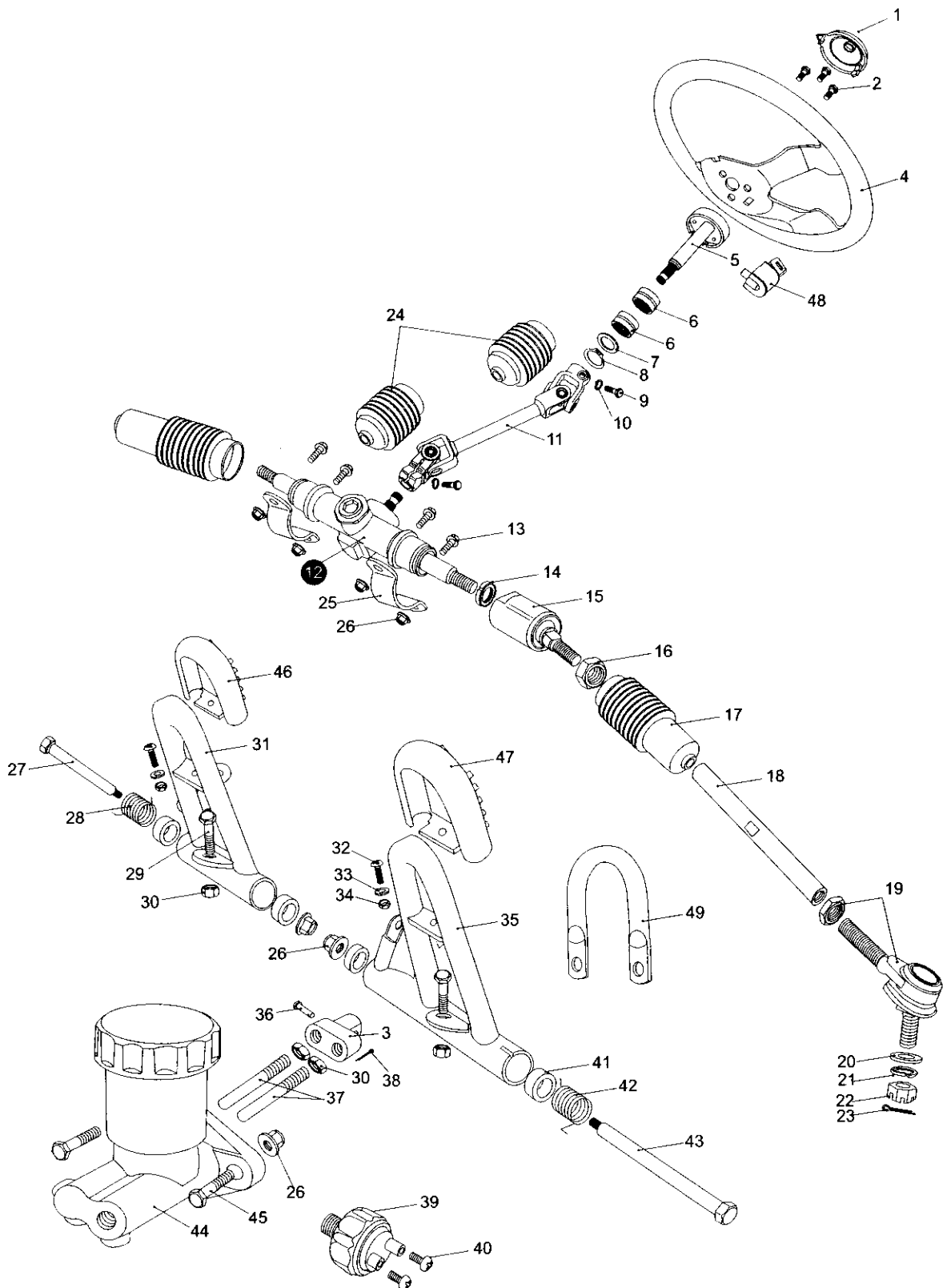
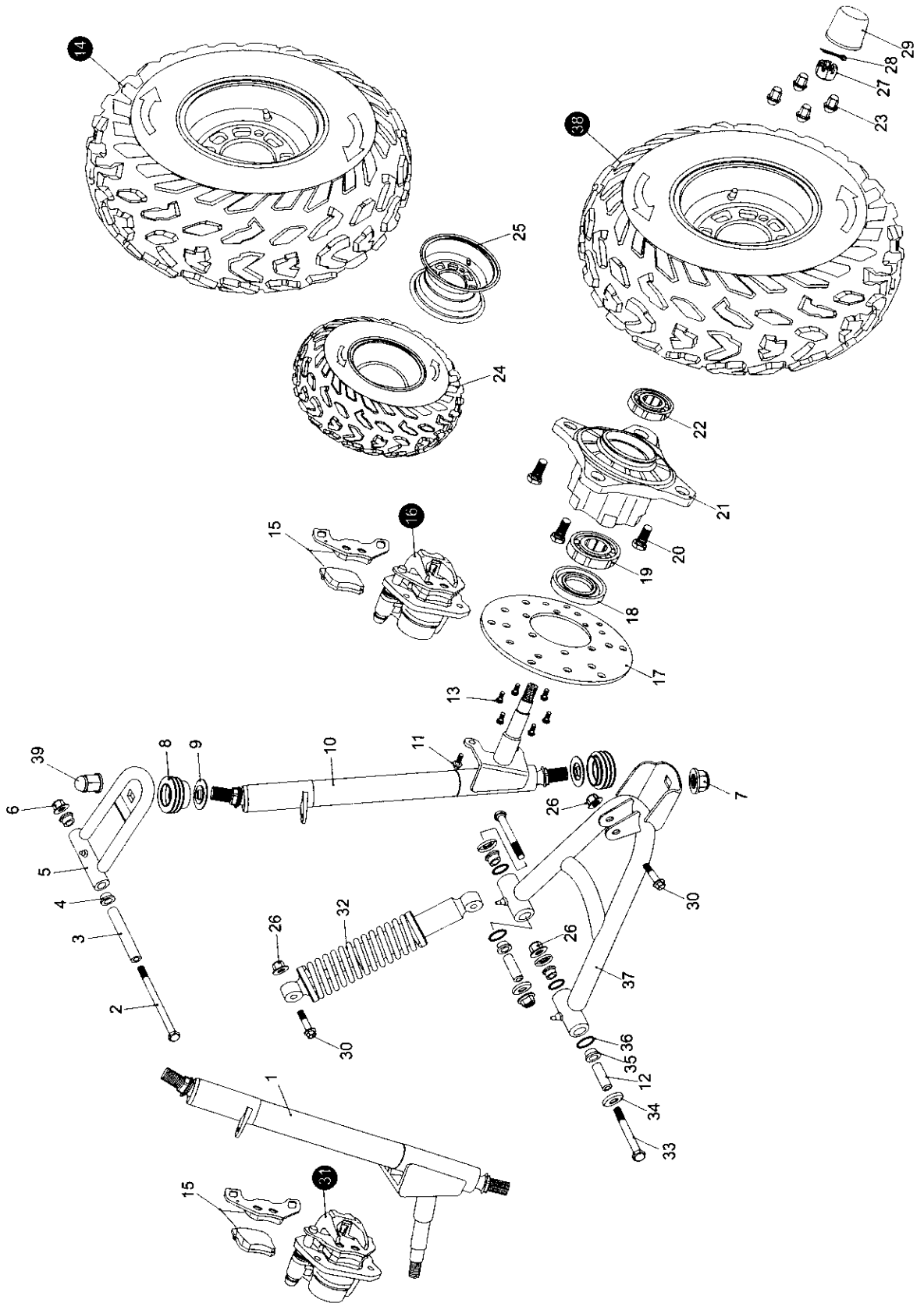


FIG.18

SUSPENSION ARM ASSY.



SUSPENSION ARM ASSY.				
REF NO.	PART NO.	DESCRIPTION	REGD NO.	
1	2.000.028	STRUT AND SPINDLE SUPPORT, R	1	
2	9.108.105	BOLT-WASHER M8x1.25x105	2	
3	8.010.015	UPPER SUSPENSION ARM COLLAR	2	
4	7.010.003	UPPER SUSPENSION ARM BUSH	4	
5	4.000.004	UPPER SUSPENSION ARM	2	
6	9.220.008	LOCKING FLANGE NUT. M8	2	
7	7.010.140	LOCKING FLANGE NUT. M12	4	
8	7.020.025	BALL HEAD DUST SEAL	4	
9	8.020.053	BALL HEAD SPACER	4	
10	2.000.027	STRUT AND SPINDLE SUPPORT, L	1	
11	9.908.014	BOLT STRAP M8x14	4	
12	8.010.014	LOWER SUSPENSION ARM COLLAR	4	
13	9.906.012	BOLT STRAP M6x12	12	
14	6.000.141	FR. WHEEL ASS'Y. R 20x7-8	1	
15	7.020.016	PAD SET. FR. BRAKE CALIPER	2	
16	6.000.028	FRONT BRAKE CALIPER. L	1	
17	8.010.054	DISC. FR. BRAKE	2	
18	9.040.002	DUST SEAL 47x25-7	2	
19	9.030.002	BEARING 6204-Z	2	
20	9.710.031	TIRE BOLT M10x1.25x31	8	
21	8.010.085B	FR. WHEEL HUB	2	
22	9.030.010	BEARING 6202-Z	2	
23	8.010.118	CAP LUG NUT M10	8	
24	7.020.050	TIRE. FR 20x7-8	2	
25	6.000.142B	RIM. FR	2	
26	9.220.010	LOCKING FLANGE NUT M10	16	
27	9.800.012	CASTLE NUT M12	2	
28	9.500.220	COTTER PIN Φ 2x20	2	
29	7.020.039	FR. HUB COVER.	2	
30	9.110.040	BOLT-WASHER M10x1.25x40	4	
31	6.000.095	FRONT BRAKE CALIPER. R	1	
32	6.000.325	CUSHION ASSY. FR L=325	2	
33	9.110.080	BOLT-WASHER M10x1.25x80	4	
34	8.020.034	LOWER SUSPENSION ARM DUST CAP	8	
35	7.010.002	LOWER SUSPENSION ARM BUSH	8	
36	9.040.001	O-RING Φ 21.2x2.65	8	
37	4.000.023	LOWER SUSPENSION ARM ASSY.	2	
38	6.000.140	FR. WHEEL ASSY. L 20x7-8	1	
39	8.010.140	ACORN NUT M12	2	

FIG.19

SPEAKER/SEAT/BELT

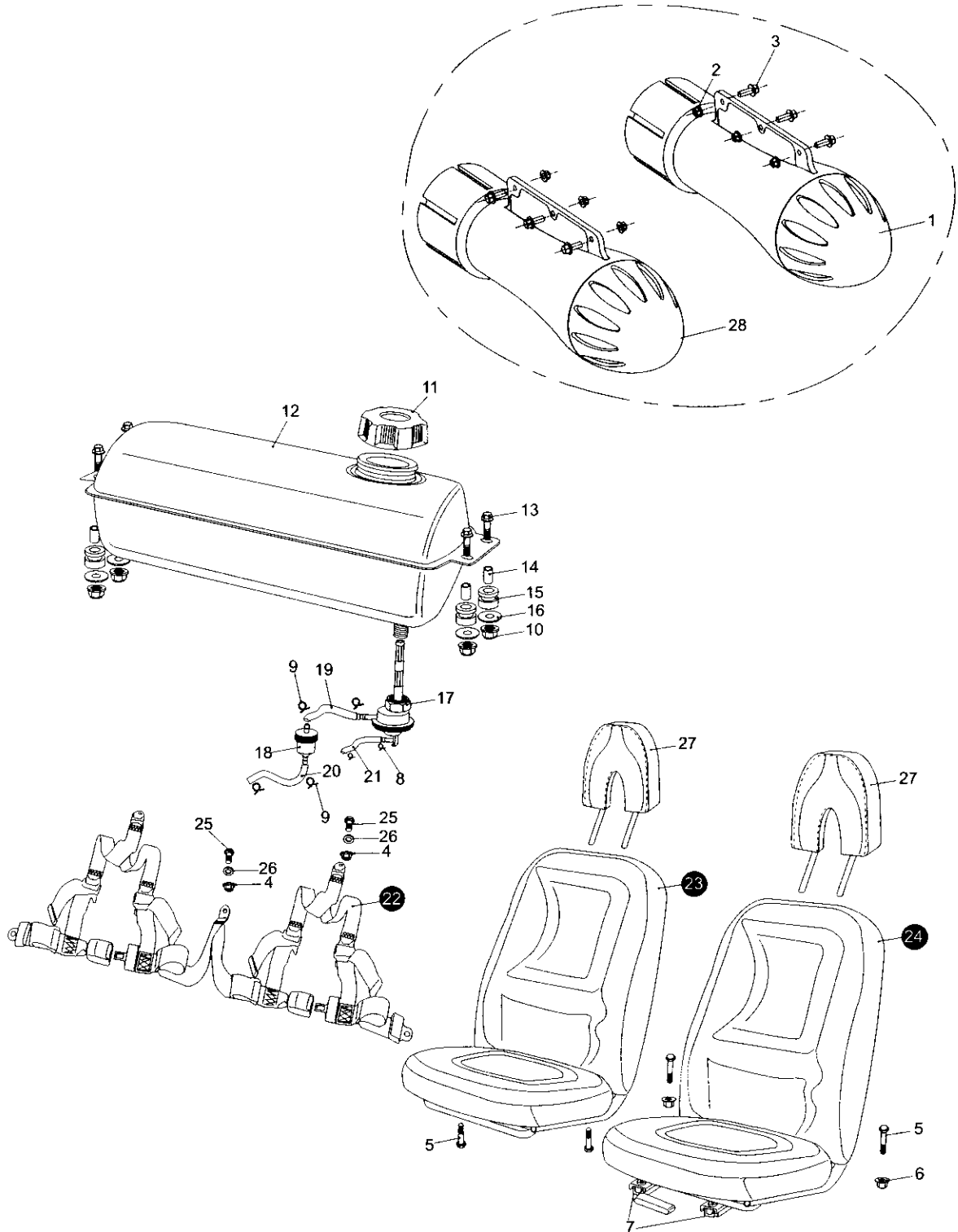


FIG.20

REAR SWING ARM ASSY. UPPER

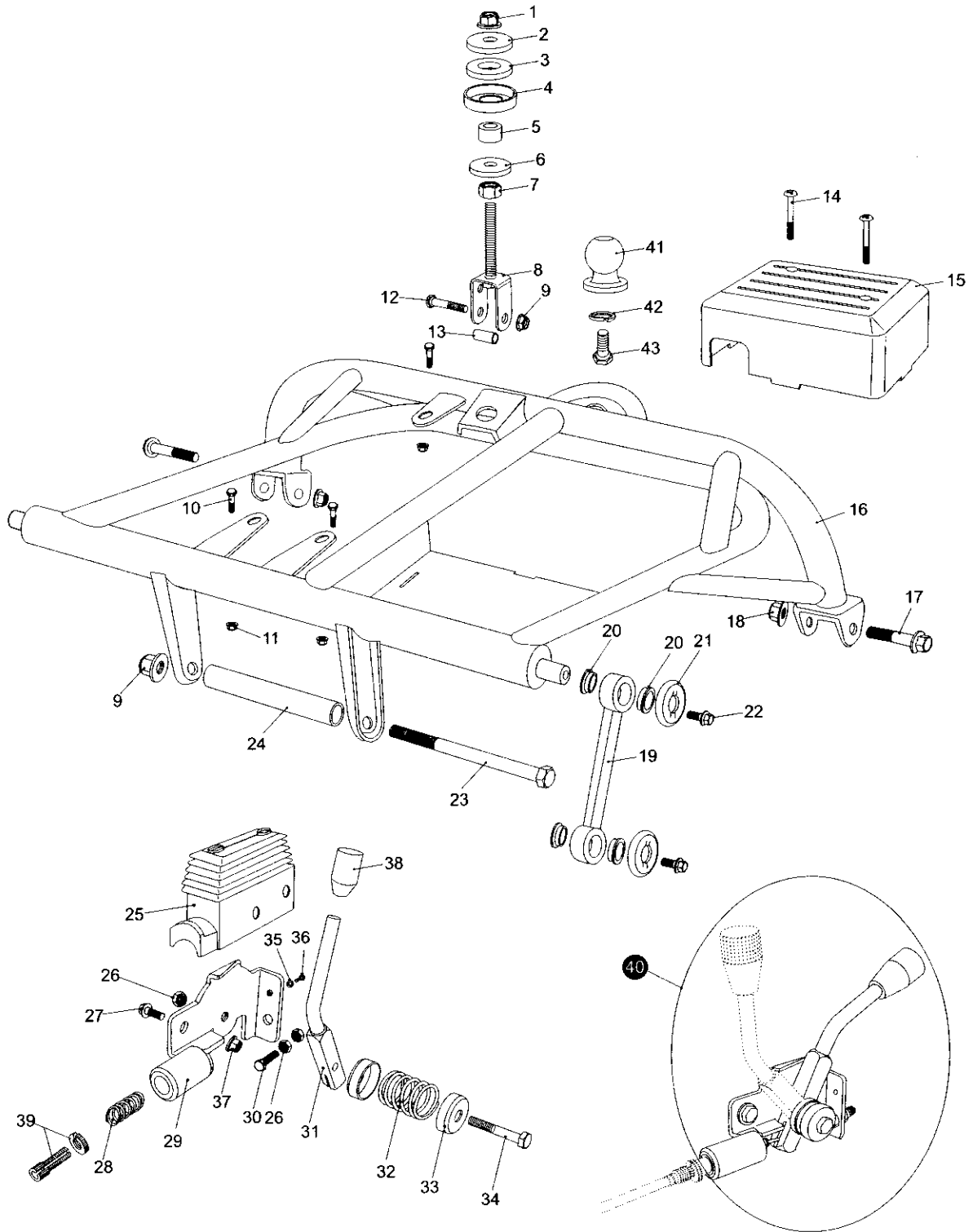


FIG.21

ENGINE/MUFFLER/AIR CLEANER

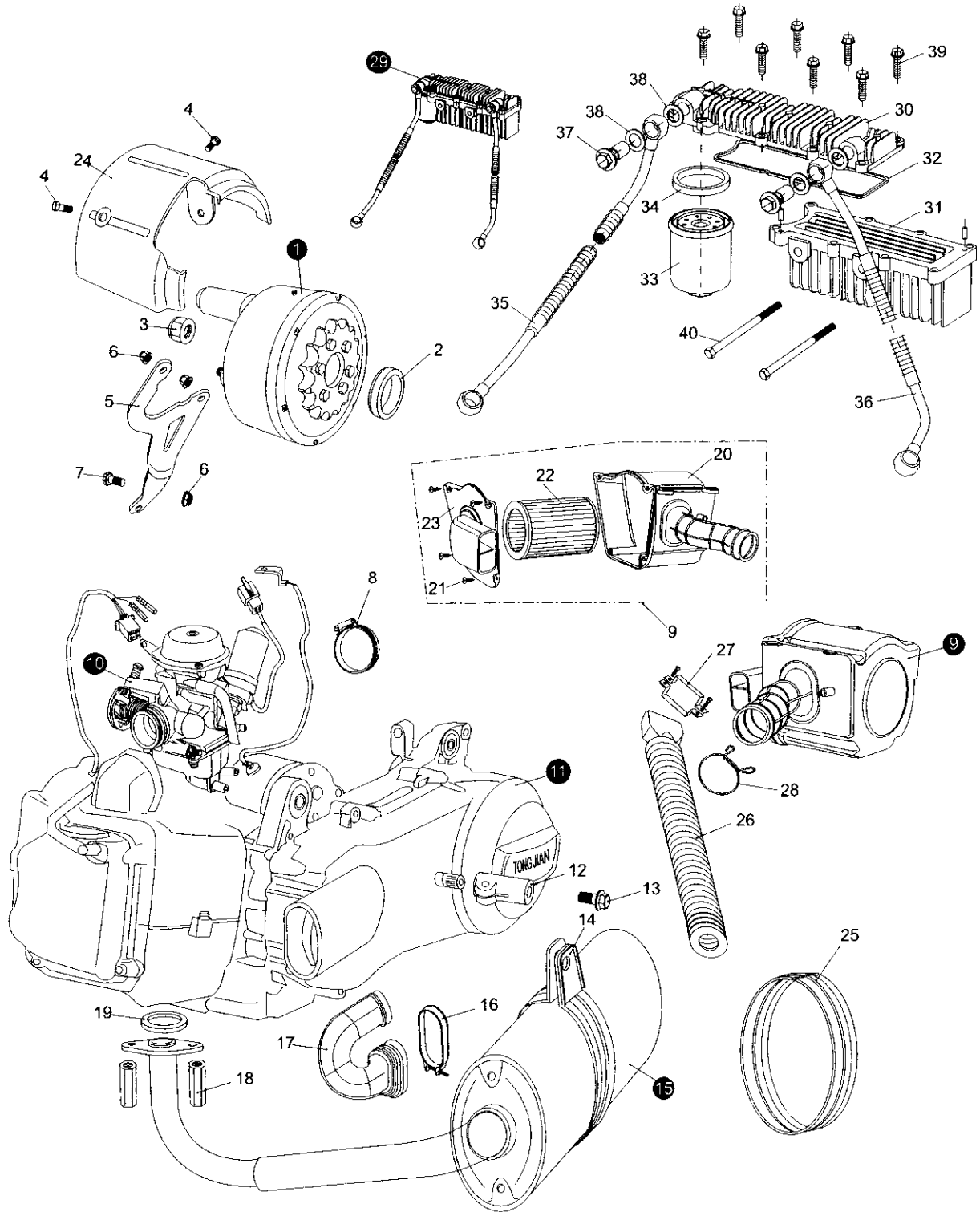


FIG.22

REAR SWING ARM

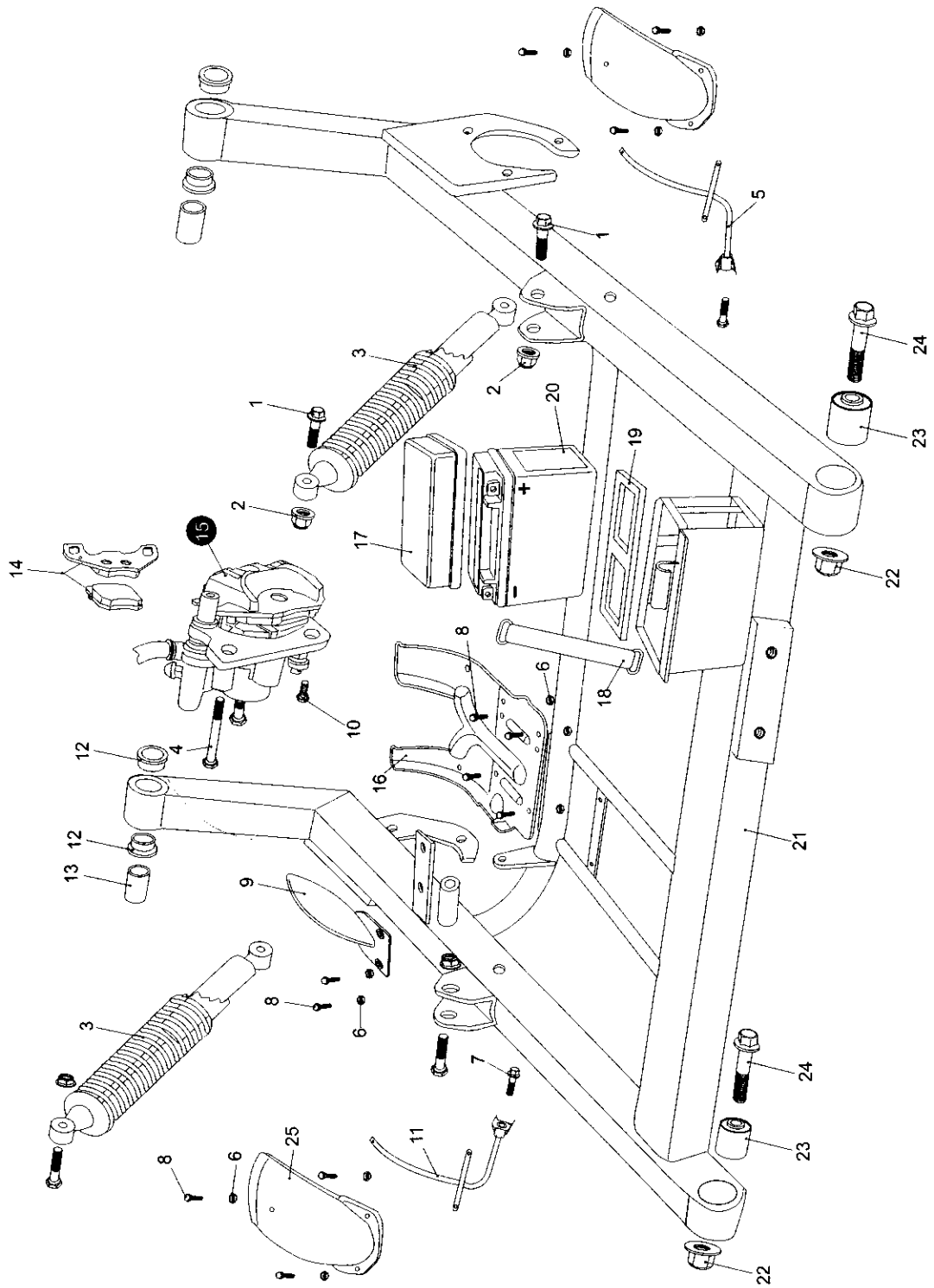


FIG.23

REAR HOUSING

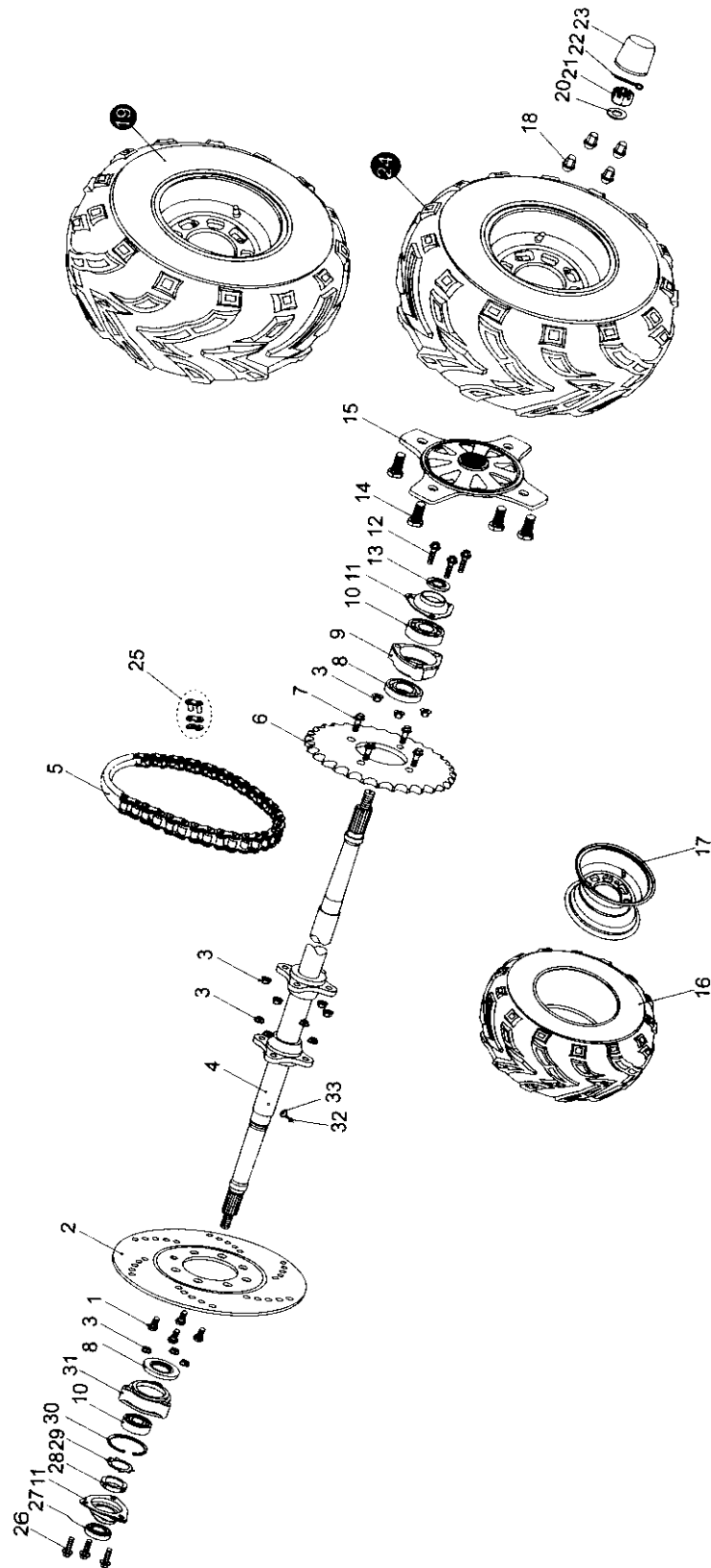


FIG.24

WIRE HARNESS/ELECTRICAL

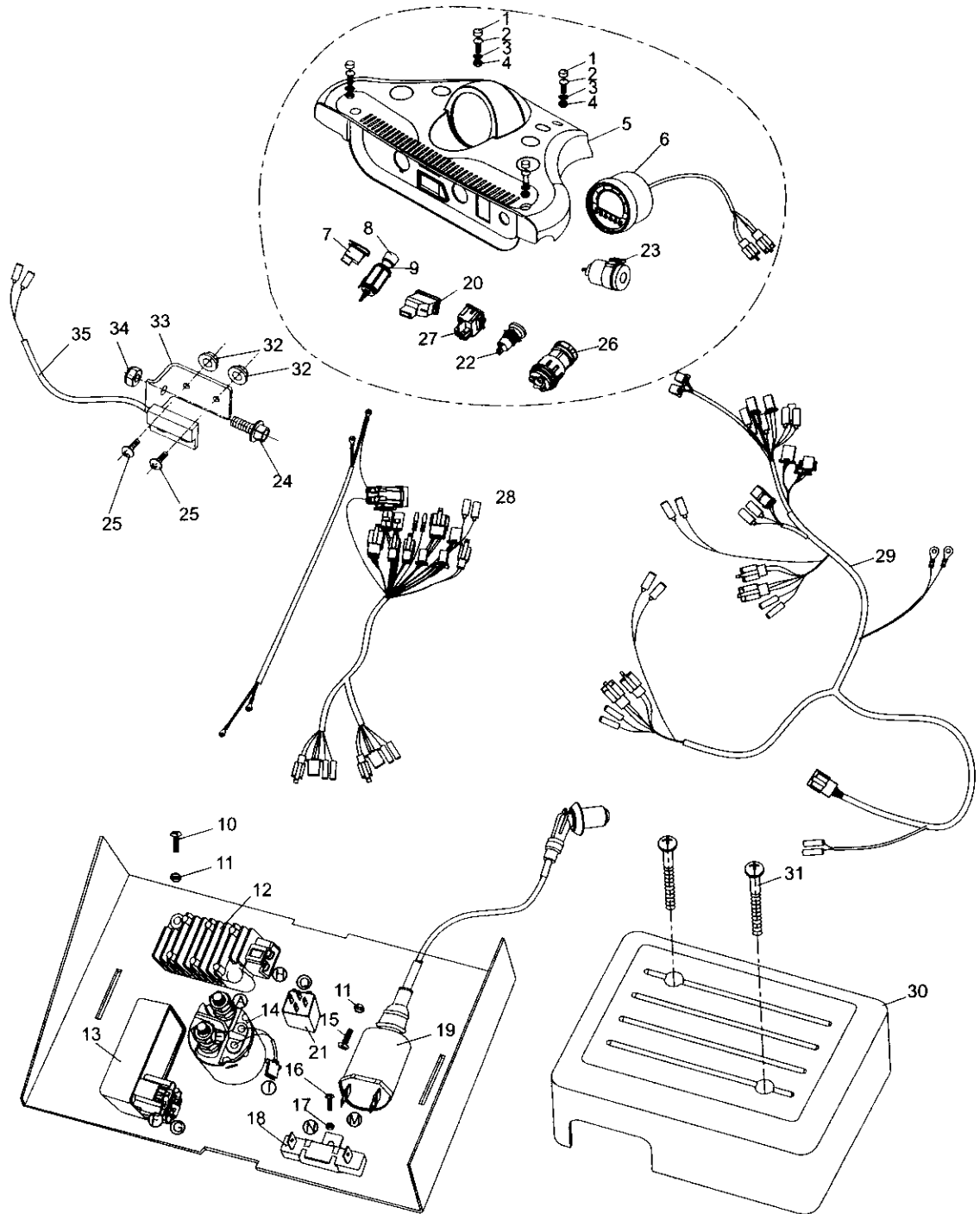
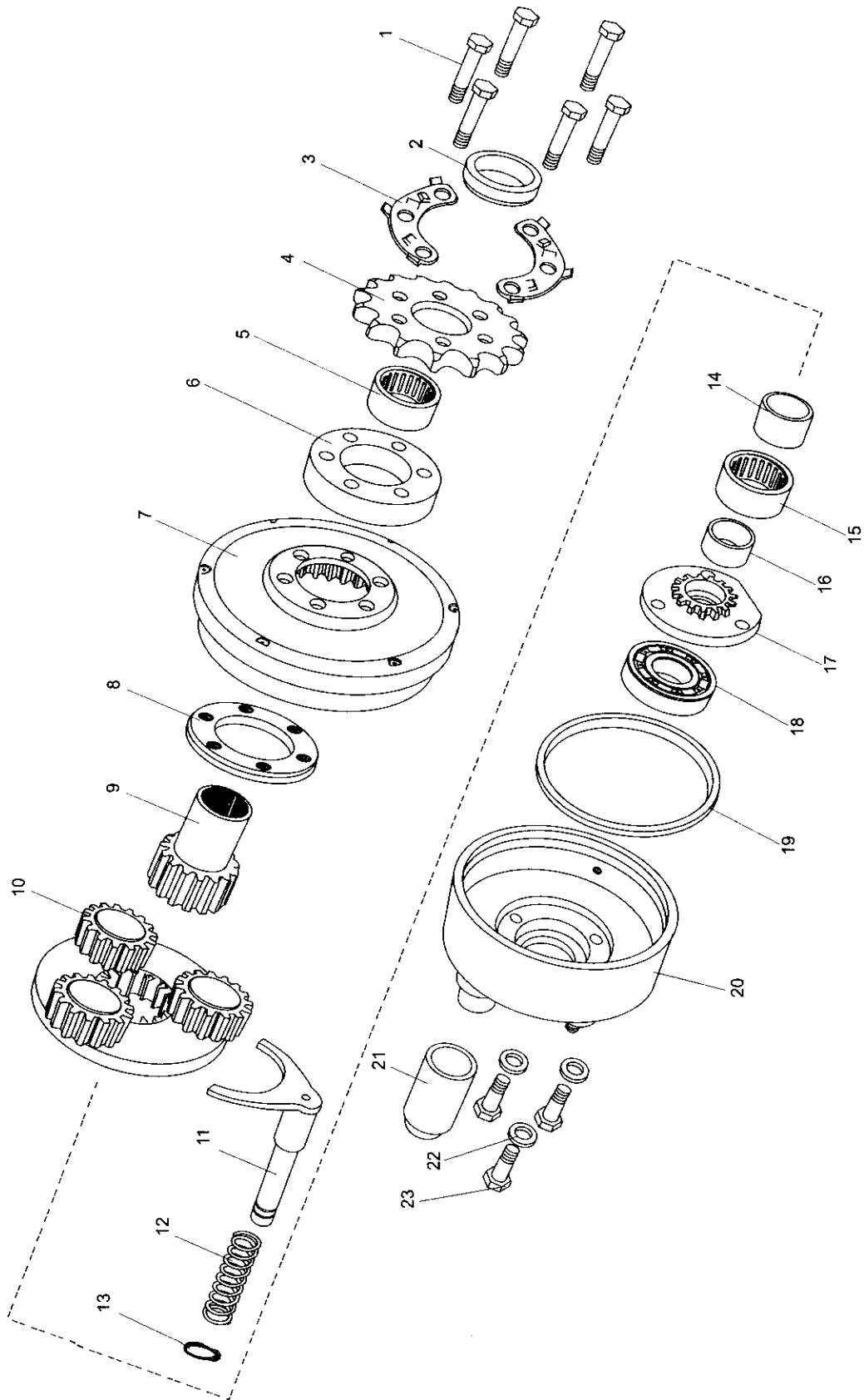


FIG.25

REVERSE ASSY.



WARNING STICKERS



WARNING STICKERS				
REF NO.	PART NO.	DESCRIPTION	REGD NO.	
1	9.090.007	PARKING BRAKE LABEL	1	
2	9.090.008	REVERSE LEVER LABEL	1	
3	9.090.009	CHAIN GUARD LABEL	1	
4	9.090.010	NO LONG HAIR LABEL	1	
5	9.090.011	WARNING LABEL	1	
6	9.090.012	NO CLIMBING LABEL	1	
7	9.090.013	WARNING LABEL	1	
8	9.090.014	SEAT BELT LABEL	1	
9	9.090.015	HAMMERHEAD FR LABEL	1	
10	9.090.016	TWISTER LABEL	3	
11	9.090.017	WARNING LABEL	1	
12	9.090.018	FUEL TANK LABEL	1	
13	9.090.019	SIDE PLATE LABEL	1	
14	9.090.020	SIDE PLATE LABEL	1	