

# Owner's Manual

---

## Parts Manual

# LM150 II R

**READ THIS MANUAL CAREFULLY,  
IT CONTAINS IMPORTANT SAFETY INFORMATION.**

**MINIMUM  
RECOMMENDED  
OPERATOR AGE: 16**

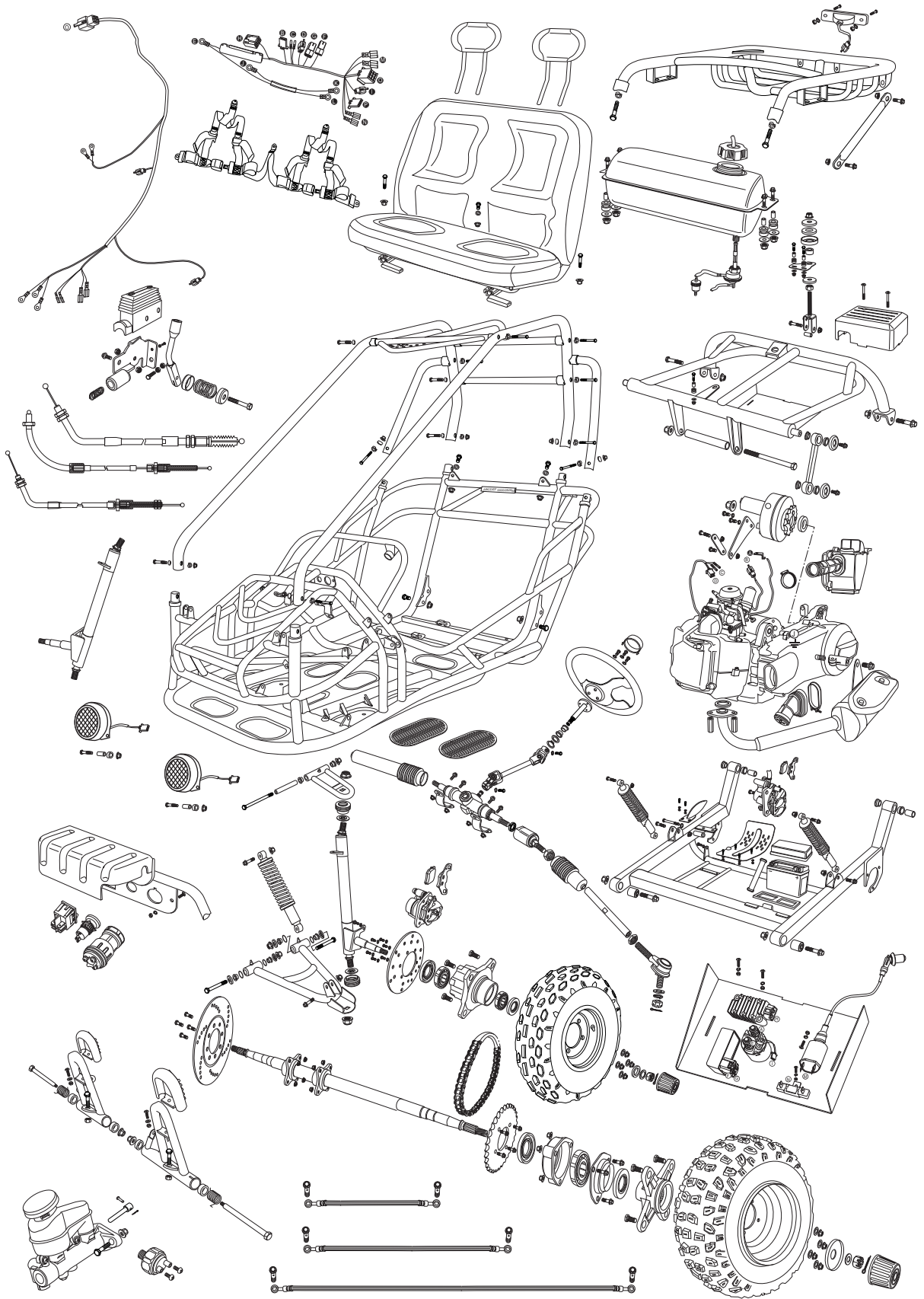


### **FOR OFF-ROAD USE ONLY**

This vehicle is designed and manufactured for off-road use only.  
USA only:

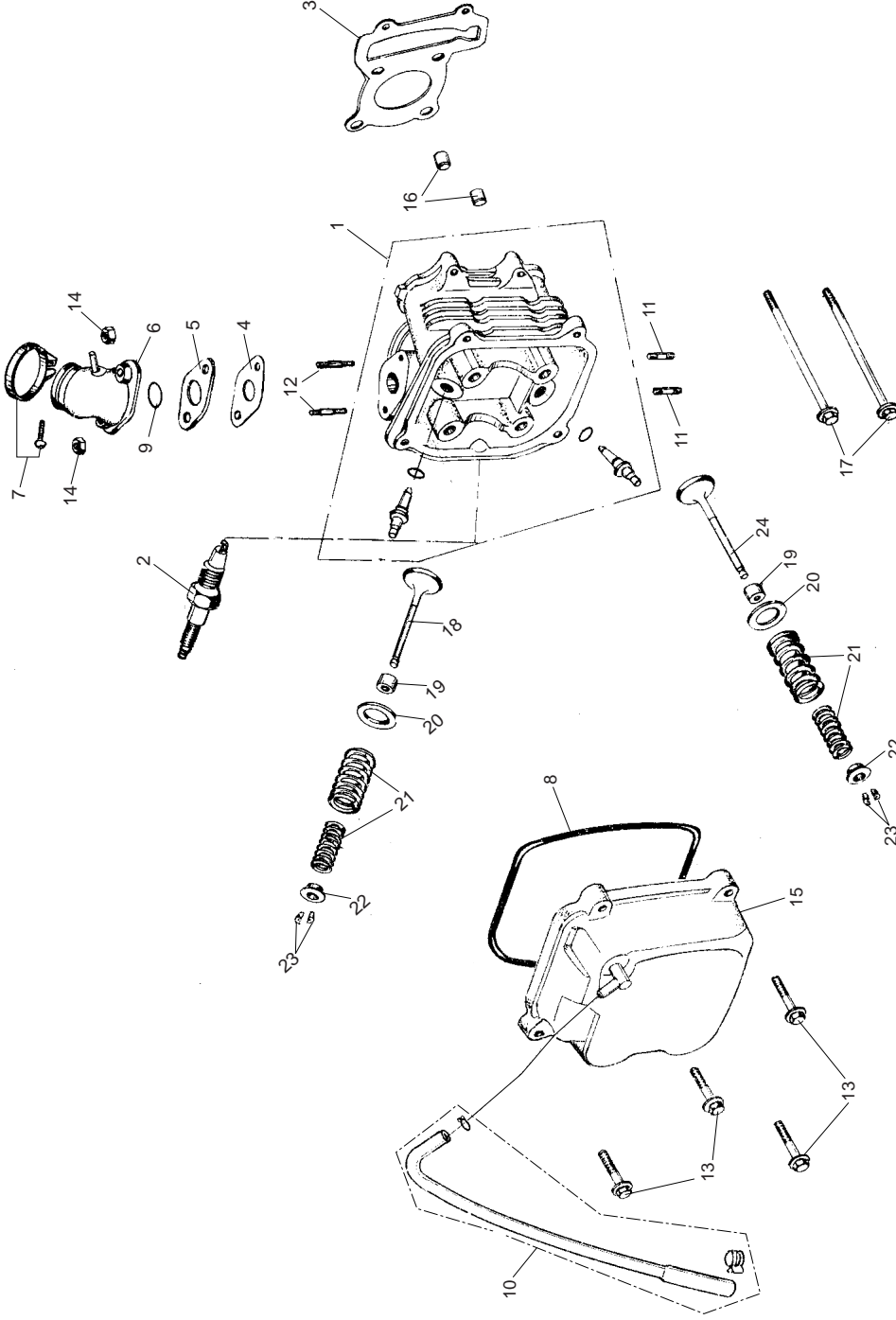
It does not conform to Federal Motor Vehicle Safety Standards, and operation on public streets, roads, or highways is illegal.

# COMPONENT LOCATIONS



# FIG.1

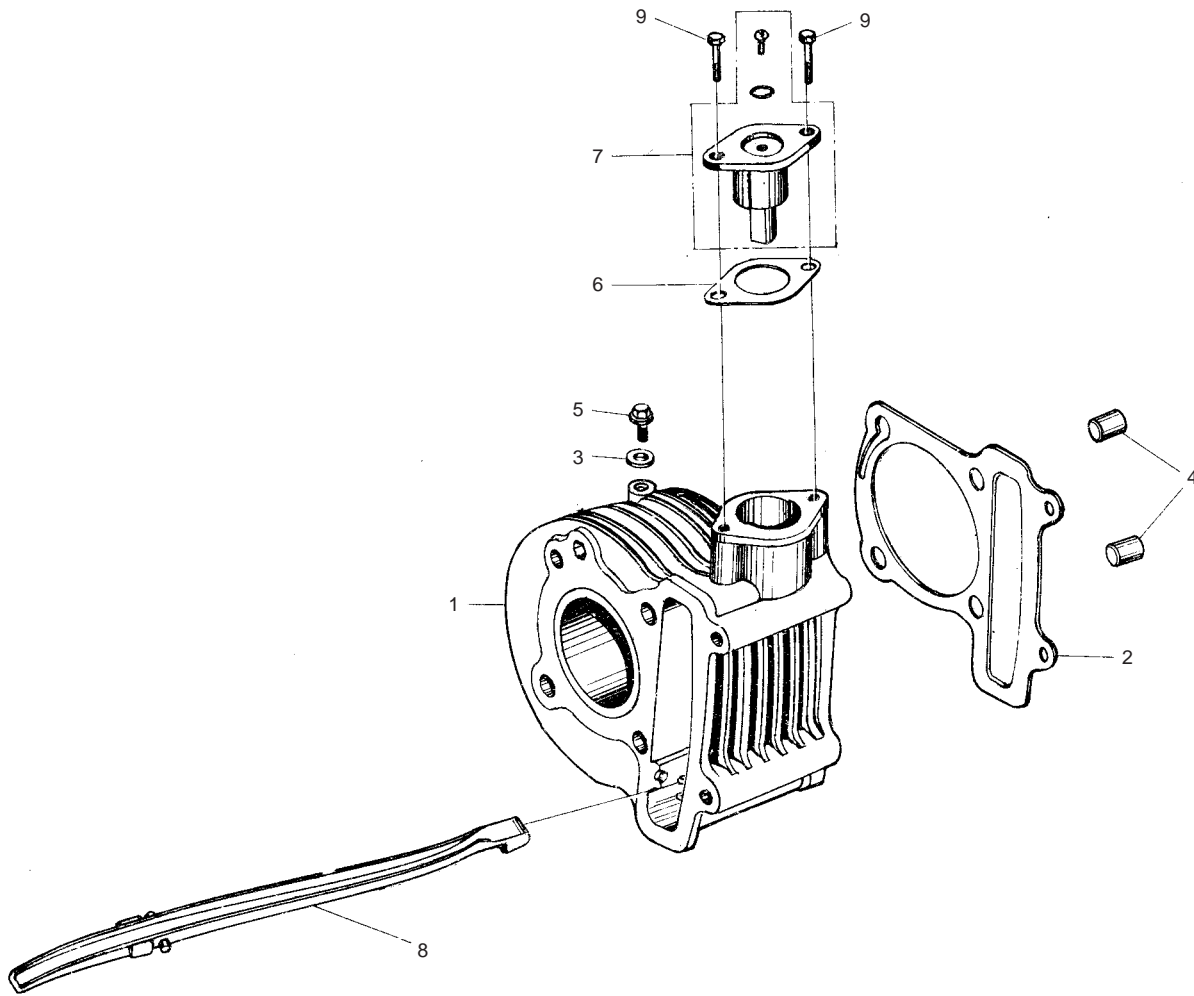
## CYLINDER HEAD ASSY.



CYLINDER HEAD ASSY.				
REF NO.	PART NO.	DESCRIPTION	REGD NO.	
1	M150-100-1320	HEAD CYLINDER SUBASSY	1	
2	98056-57713-00	PLUG SPARK(C7HSA NGK)	1	
3	M150-1001010	GASKET CYLINDER HEAD	1	
4	M150-1001004	GASKET CARBURETOR INSULATOR	1	
5	M150-1001005	INSULATOR CARBURETOR	1	
6	M150-1001210	PIPE COMP. IN	1	
7	M150-1001220	BAND INSULATOR	1	
8	M150-1001103	GASKET HEAD COVER	1	
9	M150-1001201	O-RING 27X2	1	
10	M150-1001001	TUBE BREATHER	1	
11	M150-1001011	BOLT STUD M6X18	2	
12	M150-1001006	BOLT STUD M6X50	2	
13	M150-B-1003075	BOLT FLANGE M6X25	4	
14	95500-06001-KAS	NUT FLANGE M6-ZN. D	2	
15	M150-1001100	COVER COMP. CYLINDER HEAD	1	
16	M150-1001007	PIN DOWEL 10X16	2	
17	M150-1003007	BOLT FLANGE M6X100, CYLINDER HEAD	2	
18	M150-1001301	VALVE, IN	1	
19	M150-1001310	SEAL VALVE STEM	2	
20	M150-1001302	SEAT VALVE SPRING OUTER	2	
21	M150-1001303	SPRING VALVE OUTER, INNER	2	
22	M150-1001305	RETAINER VALVE SPRING	2	
23	M150-1001306	COTTER VALVE	4	
24	M150-1001307	VALVE, EX	1	

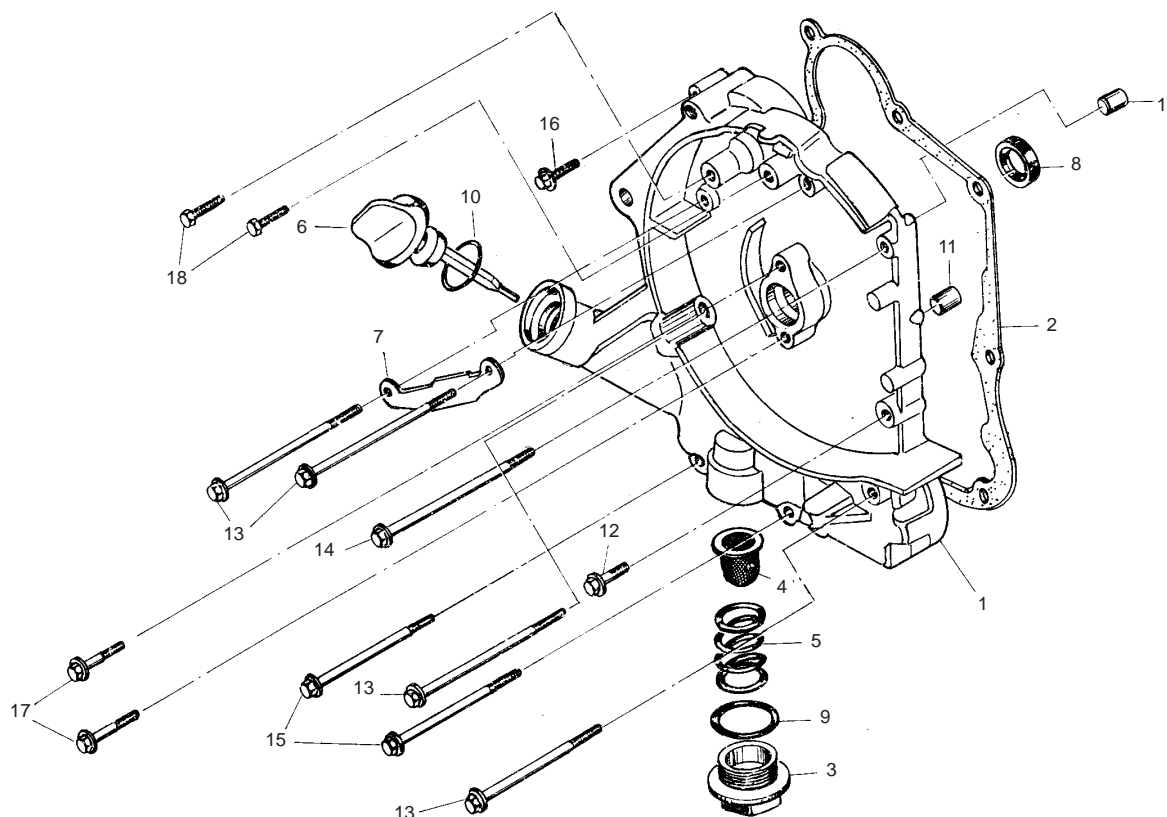
# FIG.2

## CYLINDER ASSY.



CYLINDER ASSY.				
REF NO.	PART NO.	DESCRIPTION	REGD NO.	
1	M150-1002200	CYLINDER COMP.	1	
2	M150-1002001	GASKET CYLINDER	1	
3	90442-06000-KAT	WASHER SEALING 6	1	
4	M150-1001007	PIN DOWEL 10X16	2	
5	96001-06012-KAT	BOLT FLANGE M6X12-ZN. D	1	
6	M150-1002002	GASKET TENSIONER LIFTER	1	
7	M150-1002100	LIFTER ASSY. TENSIONER	1	
8	M150-1002300	GUIDE COMP. CAM CHAIN	1	
9	96001-06020-KAT	BOLT FLANGE, 6X20	2	

## CRANKCASE ASSY. (1)

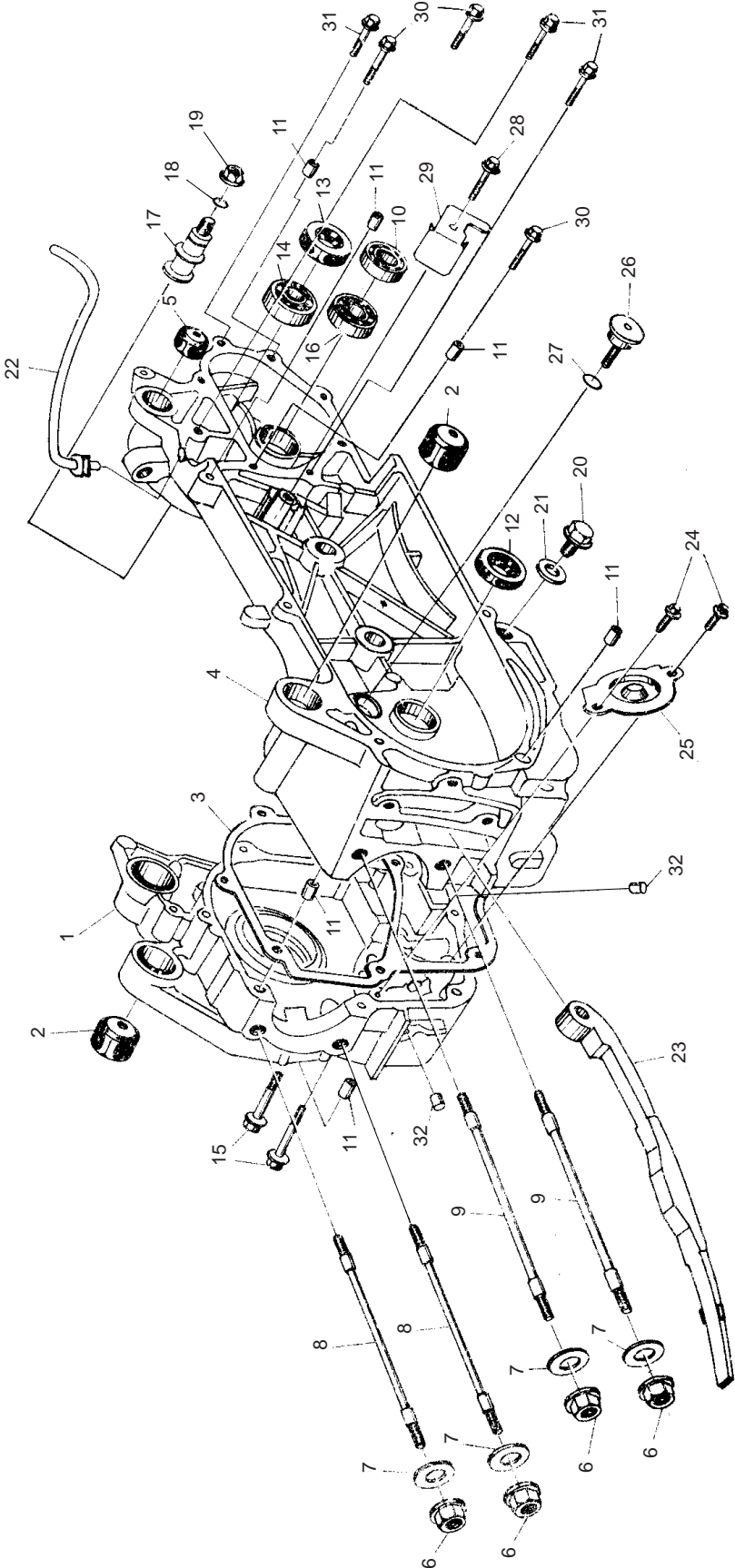


CRANKCASE ASSY.(1)				
REF NO.	PART NO.	DESCRIPTION	REGD NO.	
1	M150-1003101	COVER R CRANKCASE COMP.	1	
2	M150-1003013	CRANKCASE COVER,GASKET	1	
3	M150-1003104	CAP TAPPET ADJUSTING HOLE	1	
4	M150-1003120	SCREEN OIL FILTING	1	
5	M150-1003102	SRING OIL FILTING SCREEN	1	
6	M150-1003105	GAUGE OIL LEVEL	1	
7	M150-1003006	CLAMPER AC GENERATOR CORD	1	
8	M150-1003110	OIL SEAL 19.8X30X5	1	
9	M150-1003103	O-RING 30.8X3	1	
10	M150-1003307	O-RING 18X3	1	
11	M150-1003005	PIN DOWEL 8X14	2	
12	M150-1003015	BOLT FLANGE M6X32	1	
13	M150-1003012	BOLT FLANGE M6X95	4	
14	M150-1003007	BOLT FLANGE M6X100	1	
15	M150-1003008	BOLT FLANGE M6X110	2	
16	M150-1003034	BOLT FLANGE M6X40	1	
17	M150-1003106	BOLT FLANGE M6X20	2	
18	92101-05012-OH	BOLT HEX M5X12-ZN.D	2	

CRANKCASE ASSY. (2)				
REF NO.	PART NO.	DESCRIPTION	REGD NO.	
1	M150-1003210	CRANKCASE ASSY. R	1	
2	M150-1003320	BUSH ENGINE HANGER RUBBER	2	
3	M150-1003014	GASKET CRANKCASE	1	
4	M150-1003310	CANKCASE ASSY. L	1	
5	M150-1003330	BUSH RR CUSHION UNDER RUBBER	1	
6	M150-1003003	NUT FLANGE M8	4	
7	M150-1003004	WASHER Ø8	4	
8	M150-1003001	BOLT STUD M8X187.5	2	
9	M150-1003002	BOLT STUD M8X195.5	2	
10	91004-E6002-KAT	BEARING RADIAL BALL E6002	1	
11	M150-1003005	PIN DOWEL 8X14	6	
12	M150-1003110	OIL SEAL 19.8X30X5	1	
13	M150-1003340	OIL SEAL 27X42X7	1	
14	91004-E6004-2RS	BEARING RADIAL BALL E6004-2RS	1	
15	M150-1003032	BOLT FLANGE M6X50	2	
16	91004-E6301-KAT	BEARING RADIAL BALL E6310	1	
17	M150-1003015	PIN BRAKE SHOE ANCHOR	1	
18	M150-1003016	OIL SEAL 7.5X15	1	
19	M150-1003600	NUT FLANGE M8	1	
20	M150-1003018	BOLT DRAIN PLUG M12	1	
21	M150-1003019	WASHER DRAIN PLUG Ø12	1	
22	M150-1003400	TUBE BREATHER	1	
23	M150-1003500	TENSIONER CAM CHAIN	1	
24	M150-1003203	BOLT FLANGE M6X12	2	
25	M150-1003202	SEPARATOR OIL	1	
26	M150-1003022	PIVOT CAM CHAIN TENSIONER	1	
27	M150-1003023	OIL SEAL 15.2X12	1	
28	M150-1003005	BOLT FLANGE M6X14	1	
29	M150-1003021	PLATE KICK RETURN STOPPER	1	
30	M150-1003009	BOLT FLANGE M6X35	3	
31	M150-1003011	BOLT FLANGE M6X25	3	
32	M150-1003201	PLUG OIL 6.5X5	2	

# FIG.4

## CRANKCASE ASSY. (2)

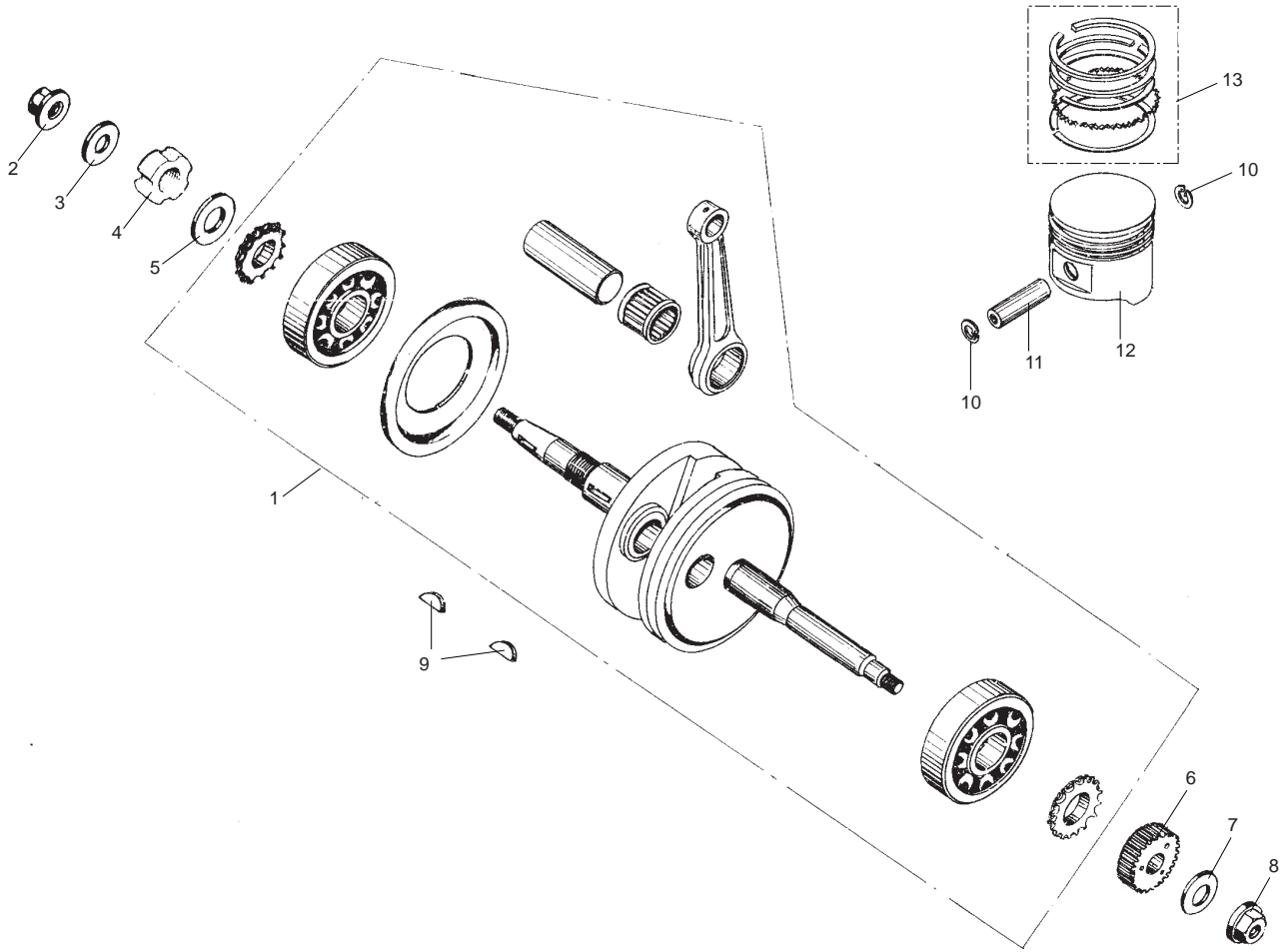




# FIG.5

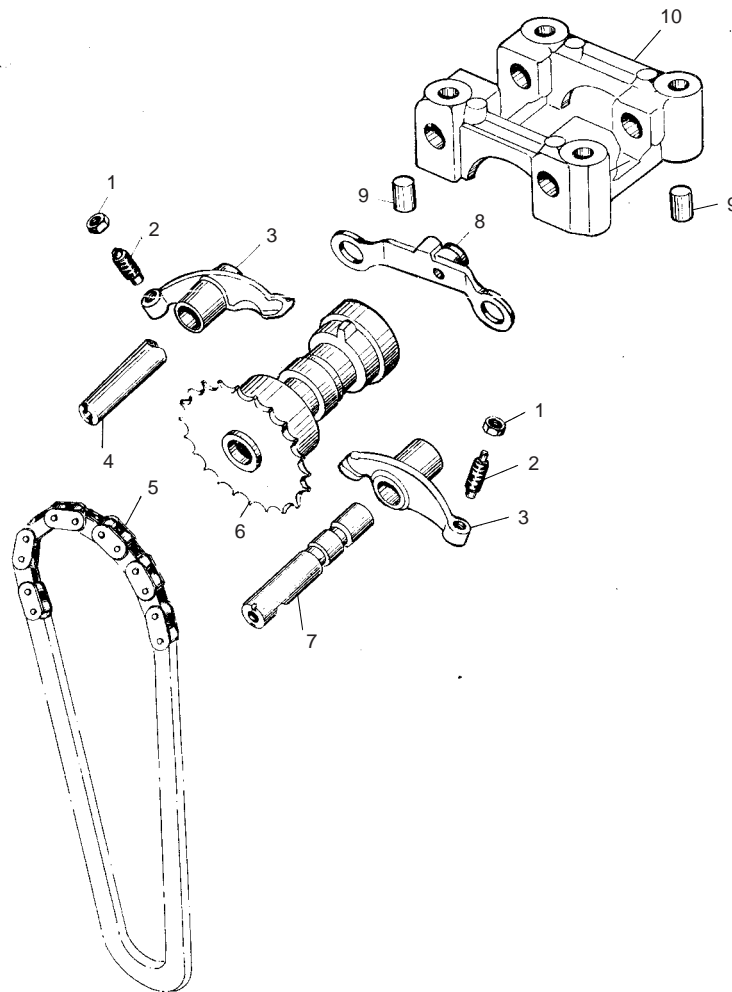
# PARTS MANUAL

## CRANKSHAFT CONROD & PISTON ASSY.



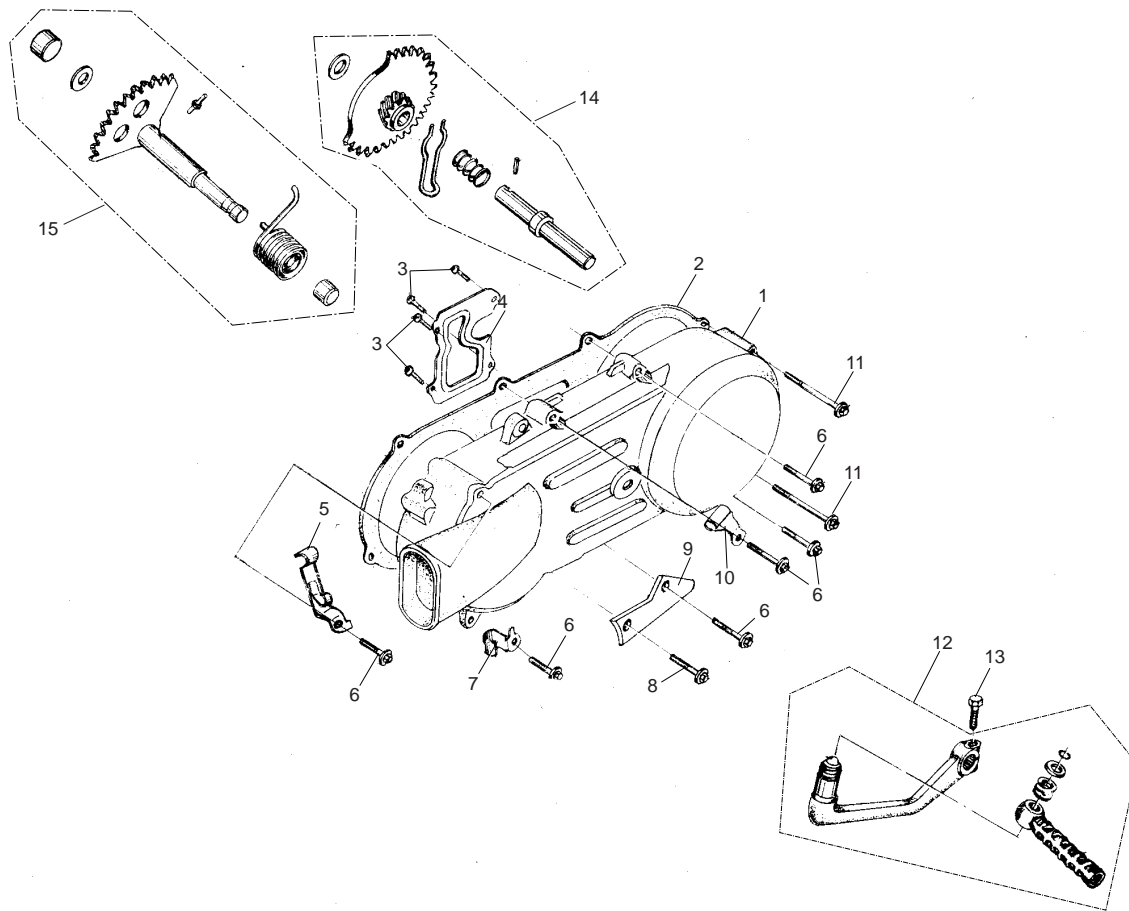
CRANKSHAFT CONROD & PISTON ASSY.				
REF NO.	PART NO.	DESCRIPTION	REGD NO.	
1	M150-1004100	CRANKSHAFT & CONROD ASSY.	1	
2	M150-1004007	NUT M12X1.25	1	
3	M150-1004011	WASHER 12-149HV 12-140HV	1	
4	M150-1004009	NUT LOCK	1	
5	M150-1004013	WASHER	1	
6	M150-1004012	GEAR KICK DRIVE	1	
7	M150-1040005	WASHER Ø12	1	
8	M150-1004008	NUT M12	1	
9	M150-1004002	KEY WOODRUFF	2	
10	M150-1004003	CLIP PISTON PIN	2	
11	M150-1004006	PIN PISTON	1	
12	M150-1004001	PISTON	1	
13	M150-1004002	PISTON RING SET	1	

CAMSHAFT ASSY.



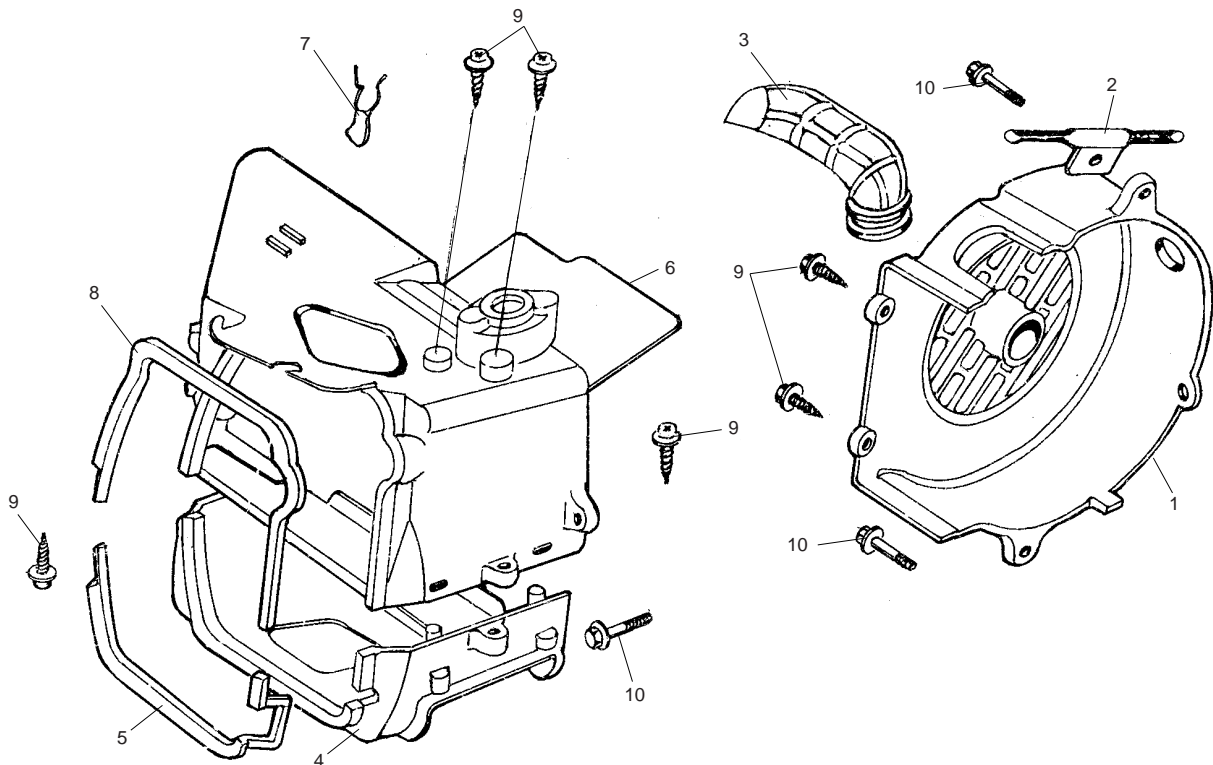
CAMSHAFT ASSY.				
REF NO.	PART NO.	DESCRIPTION	REGD NO.	
1	M150-1005004	NUT TAPPET ADJUSTING	2	
2	M150-1005003	SCREW TAPPET ADJUSTING	2	
3	M150-1005002	ARM VALVE ROCKER	2	
4	M150-1005005	SHAFT EX ROCKER ARM	1	
5	M150-1005400	CHAIN CAMSHAFT,	1	
6	M150-1005300	CAMSHAFT COMP. 16T	1	
7	M150-1005200	SHAFT COMP. IN ROCK ARM	1	
8	M150-1005100	PLATE COMP. STOPPER	1	
9	M150-1001007	PIN DOWEL 10X16	2	
10	M150-1005001	HOLDER CAMSHAFT	1	

## LEFT COVER ASSY.



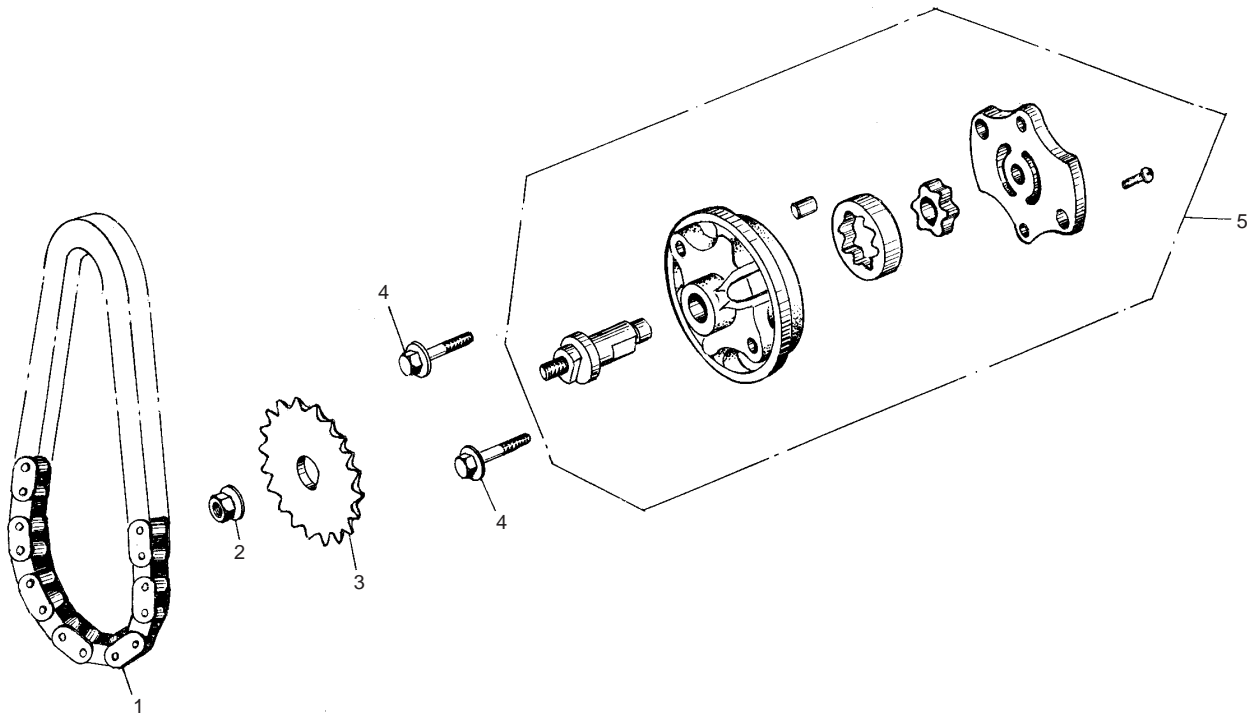
LEFT COVER ASSY.				
REF NO.	PART NO.	DESCRIPTION	REGD NO.	
1	M150-1008101	COVER L	1	
2	M150-1008005	GASKET L COVER	1	
3	93903-00428-KAT	SCREW TAPPING ST4.2X8-F-H	4	
4	M150-1008102	PLATE L COVER	1	
5	M150-1008500	CLAMPER THROTTLE CABLE	1	
6	M150-1003034	BOLT FLANGE M6X40	6	
7	M150-1008007	CLAMPER BREATHER DRAIN TUBE	1	
8	M150-1003203	BOLT FLANGE M6X12	1	
9	M150-1008009	STOP PLATE	1	
10	M150-1008008	CLAMPER BRAKE CABLE	1	
11	M150-1008006	BOLT FLANGE M6X65	2	
12	M150-1008400	PEDAL KICK STARTER ASSY.	1	
13	96001-06022-08	BOLT FLANGE M6X22-ZN. D	1	
14	M150-1008310	GEAR COMP. STARTER IDLE	1	
15	M150-1008200	SPINDLE COMP. KICK STARTER ASSY.	1	

FAN COVER AND SHROUD ASSY.



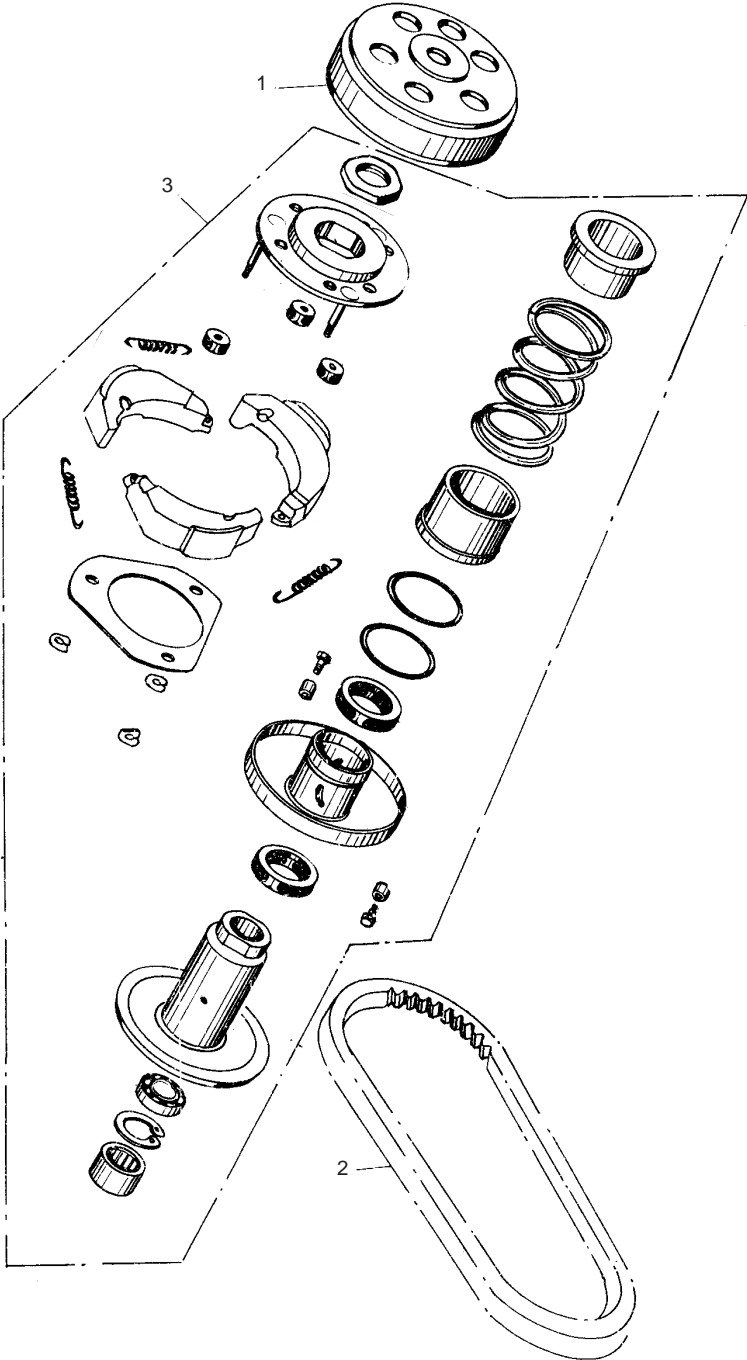
FAN COVER AND SHROUD ASSY.				
REF NO.	PART NO.	DESCRIPTION	REGD NO.	
1	M150-1009410	COVER COMP. FAN	1	
2	M150-1009002	CLAMPER STARTER CABLE	1	
3	M150-1009401	DUCT CARBURETOR COOLING	1	
4	M150-1009301	SHROUD LOWER	1	
5	M150-1009302	SEAL SHROUD LOWER	1	
6	M150-1009110	SHROUD COMP. UPPER	1	
7	M150-1009103	CLIP HIGH TENSION CORD	1	
8	M150-1009102	SEAL SHROUD UPPER	1	
9	M150-1009402	SCREW ST4.8X16-F	6	
10	M150-1003075	BOLT M6X25	3	

## OIL PUMP ASSY.



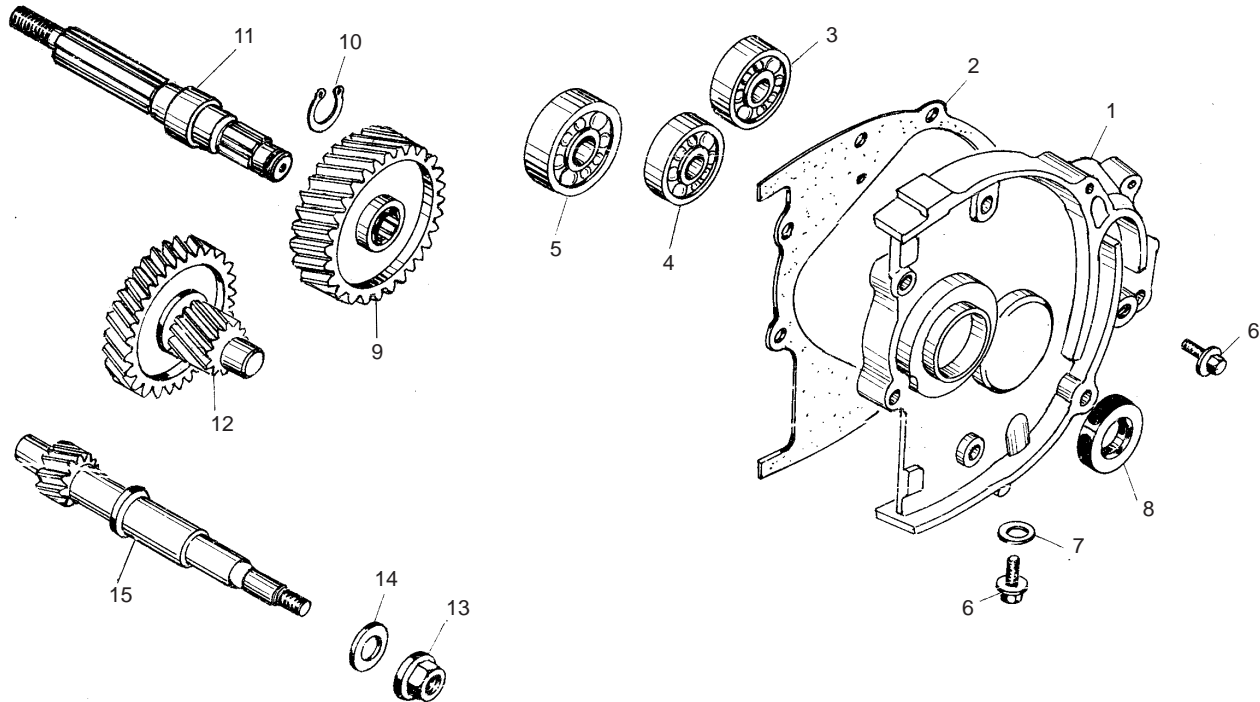
OIL PUMP ASSY.				
REF NO.	PART NO.	DESCRIPTION	REGD NO.	
1	M150-1021000	CHAIN OIL PUMP	1	
2	M150-1020002	NUT FLANGE M6	1	
3	M150-1020001	SPROCKET OIL PUMP DRIVEN	1	
4	M150-B-1003075	BOLT M6X25	2	
5	M150-1022000	OIL PUMP SUB ASSY.	1	

DRIVEN PULLEY AND CLUTCH SUBASSY.



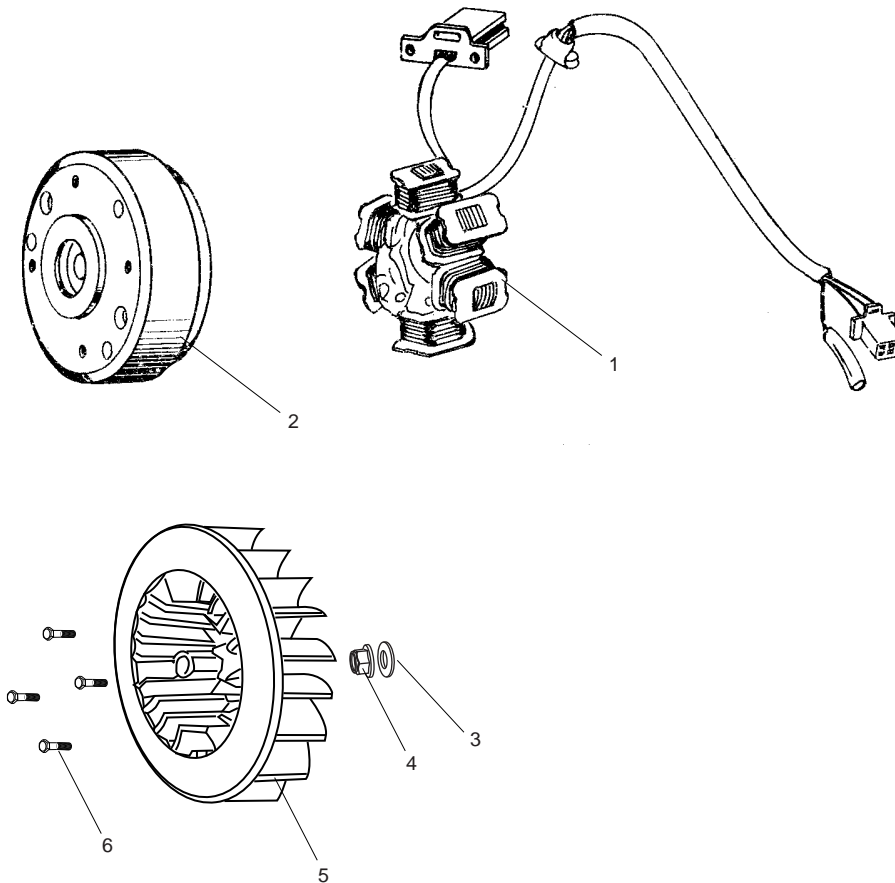
DRIVEN PULLEY AND CLUTCH SUBASSY.				
REF NO.	PART NO.	DESCRIPTION	REGD NO.	
1	M150-1032000	OUTER CLUTCH ASSY.	1	
2	M150-1033000	BELT DRIVE	1	
3	M150-1031000	PULLEY ASSY. DRIVEN	1	

## TRANSMISSION ASSY.



TRANSMISSION ASSY.				
REF NO.	PART NO.	DESCRIPTION	REGD NO.	
1	M150-1040001	COVER TRANSMISSION	1	
2	M150-1041000	GASKET TRANSMISSION COVER	1	
3	91004-E6203-KAT	BEARING RADIAL BALL E6203	1	
4	91004-E6202-KAT	BEARING RADIAL BALL E6202	1	
5	91004-E6204-KAT	BEARING RADIAL BALL E6204	1	
6	M150-1040008	BOLT SPECIAL M8X12	2	
7	M150-1040002	WASHER Ø8	1	
8	M150-1042000	OIL SEAL 20X32X6	1	
9	M150-1040004	GEAR FINAL	1	
10	94510-20000	CIRCLIP EXTERNAL 20	1	
11	M150-1040003	SHAFT FINAL	1	
12	M150-1043000	SHAFT COMP. COUNTER	1	
13	M150-1040007	NUT COMPRESSOR FLANGE M12	1	
14	M150-1040005	WASHER Ø12	1	
15	M150-1040006	SHAFT DRIVE	1	

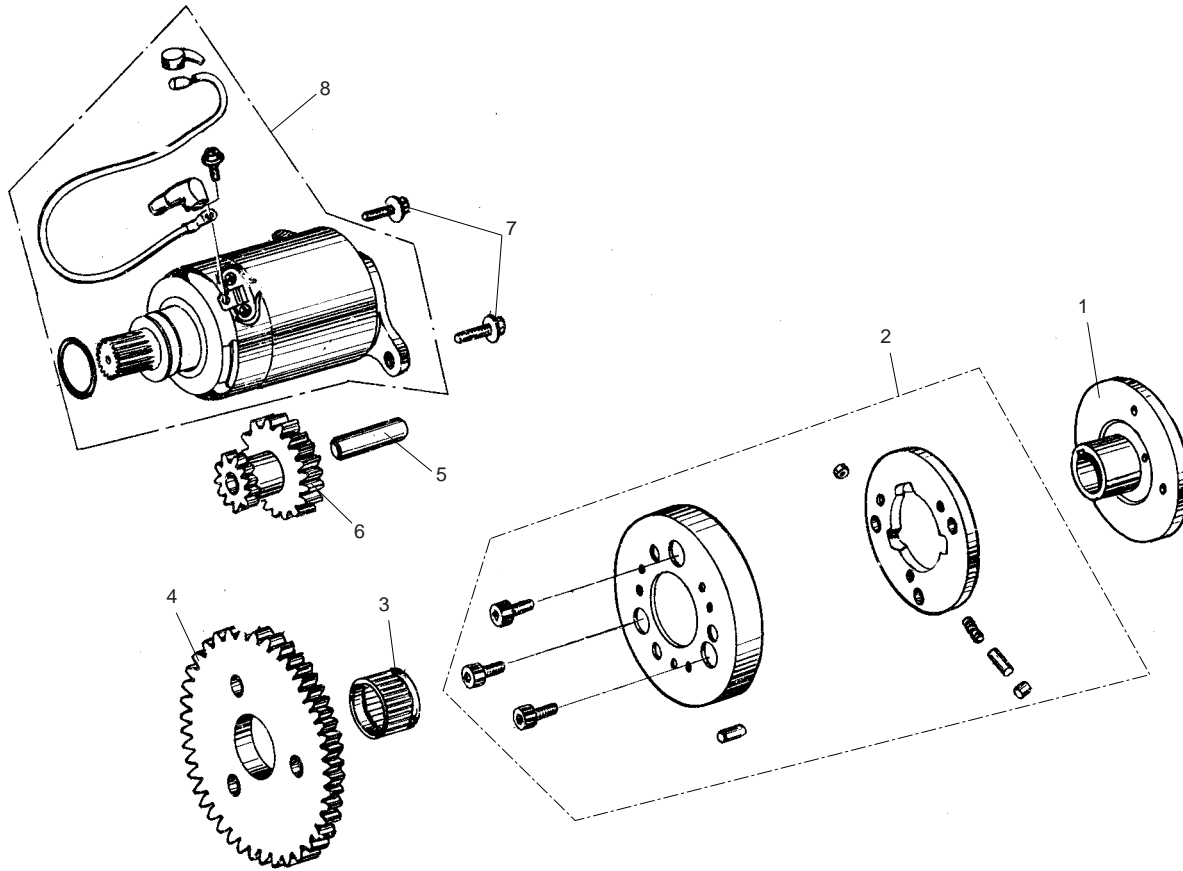
ELECTRIC SYSTEM



ELECTRIC SYSTEM				
REF NO.	PART NO.	DESCRIPTION	REGD NO.	
1	M150-1051200	STATOR COMP.	1	
2	M150-1051100	FLYWHEEL COMP.	1	
3	M150-1051100-1	WASHER PLAIN $\varnothing 12$	1	
4	M150-1051100-2	NUT, FLANGE M12	1	
5	M150-1051100-3	FAN COMP COOLING	1	
6	M150-1051100-4	BOLT FLANGE M6x18	4	

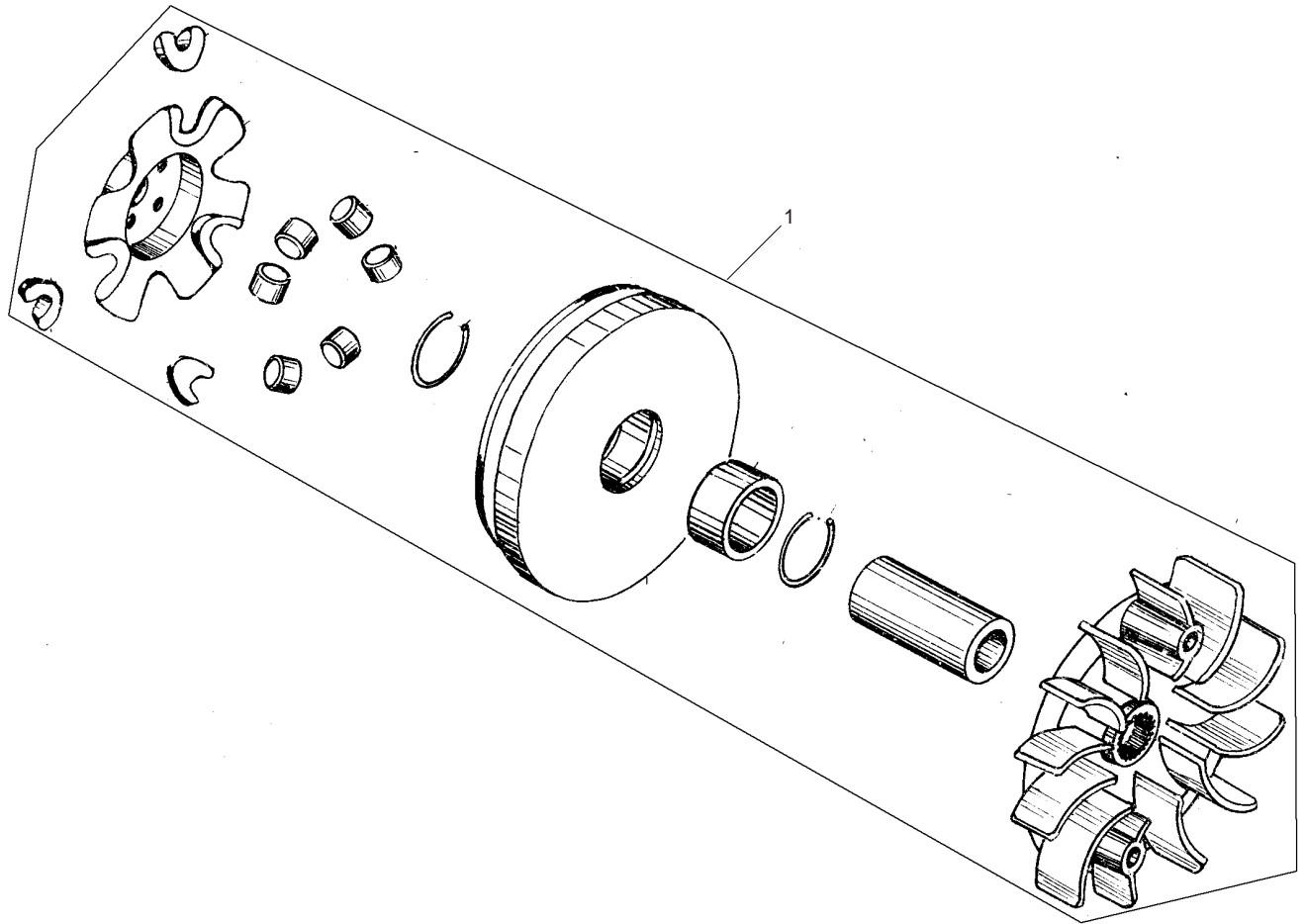


## ELECTRIC STARTER ASSY.



ELECTRIC STARTER ASSY.				
REF NO.	PART NO.	DESCRIPTION	REGD NO.	
1	M150-1060001	FLANGE STARTING CLUTCH	1	
2	M150-1063000	OUTER COMP. STARTING CLUTCH ASSY.	1	
3	M150-1061000	BEARING NEEDLE 28X32X17	1	
4	M150-1062000	GEAR COMP. STARTING CLUTCH	1	
5	M150-1060002	SHAFT STARTER REDUCTION GEAR	1	
6	M150-1060003	GEAR STARTER REDUCTION	1	
7	M150-1060005	BOLT FLANGE M6X16	2	
8	M150-1064000	MOTOR ASSY. STARTER	1	

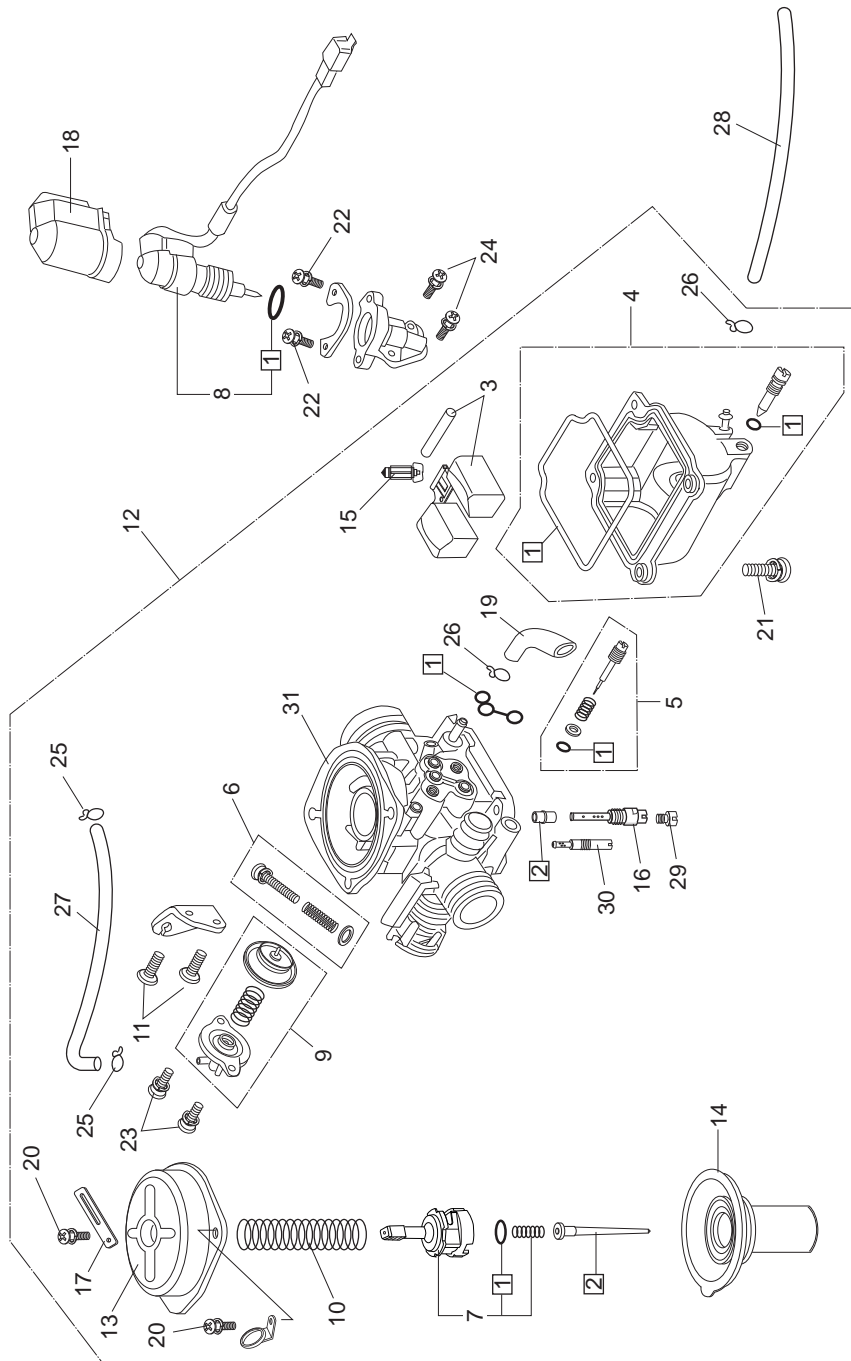
DRIVE PULLEY SUBASSY.



DRIVE PULLEY SUBASSY.				
REF NO.	PART NO.	DESCRIPTION	REGD NO.	
1	M150-1071000	PULLEY ASSY. MOVABLE DRIVE	1	

# FIG.15

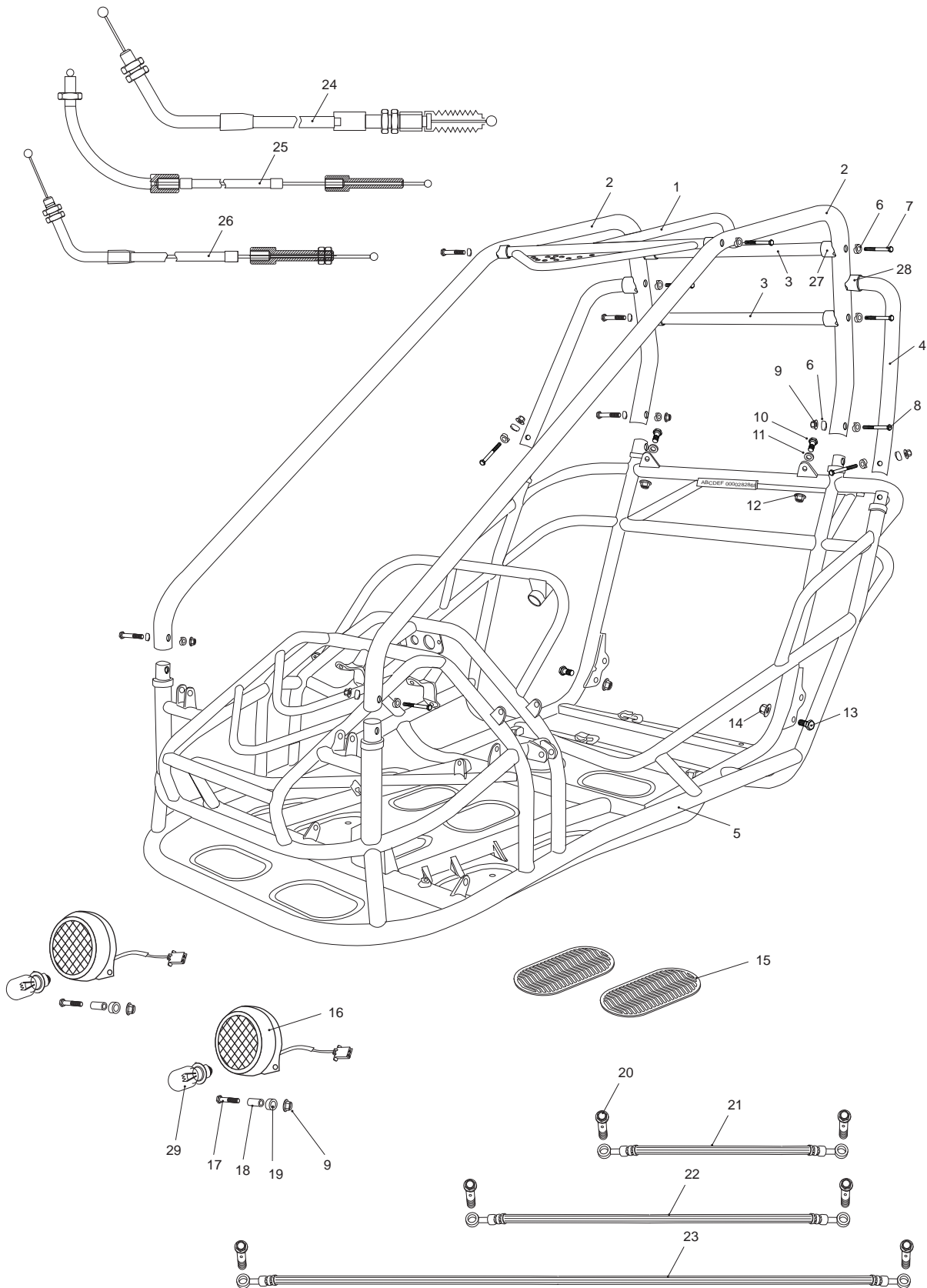
## CARBURETOR



CARBURETOR				
REF NO.	PART NO.	DESCRIPTION	REGD NO.	
1	16010-KAT-901	GASKET SET A	1	
2	16012-KAT-903	NEEDLE SET. JET	1	
3	16013-KAT-904	FLOAT SET	1	
4	16015-KAT-905	CHAMBER SET. FLOAT	1	
5	16016-KAT-906	SCREW SET A	1	
6	16028-KAT-907	SCREW SET B	1	
7	16037-KAT-908	PLATE SET. VALVE	1	
8	16046-KAT-909	BYSTARTER ASSY., AUTO	1	
9	16048-KAT-910	VALVE SET. AIR CUT	1	
10	16050-KAT-911	SPRING. COMPRESSION COIL	1	
11	16080-KJ9-003	SCREW. PAN M5x12	1	
12	16100-KAT-913	CARBURETOR ASSY.	2	
13	16107-KAT-914	TOP	1	
14	16111-KAT-915	PISTON COMP., VACUUM	1	
15	16155-KAT-902	VALVE COMP. FLOAT	1	
16	16165-KAT-916	HOLDER. NEEDLE JET	1	
17	16179-KAB-670	BINDER	1	
18	16190-GJ2-004	CAP. HOLDER	1	
19	95005-45270-50	TUBE	1	
20	93500-04008	SCREW, PAN, M4x8	1	
21	93500-04014-1H	SCREW, PAN, M4x14	2	
22	93892-04008-18	SCREW-WASHER, M4x8	4	
23	93892-04010-18	SCREW-WASHER, M4x10	2	
24	93892-05012-18	SCREW-WASHER, M5x12	2	
25	95002-02079	CLIP, TUBE (B7)	2	
26	95002-02089	CLIP, TUBE (B8)	2	
27	95005-35200-21	TUBE, 3.5x210	2	
28	16199-GT8-600	TUBE	1	
29	99101-GHB-0112	JET, MAIN 112#	1	
30	99103-GY6-0350	JET, SLOW 35#	1	
31	16100-KAT-923	CARBURETOR BODY	1	

# FIG.16

## FRAME GROUP

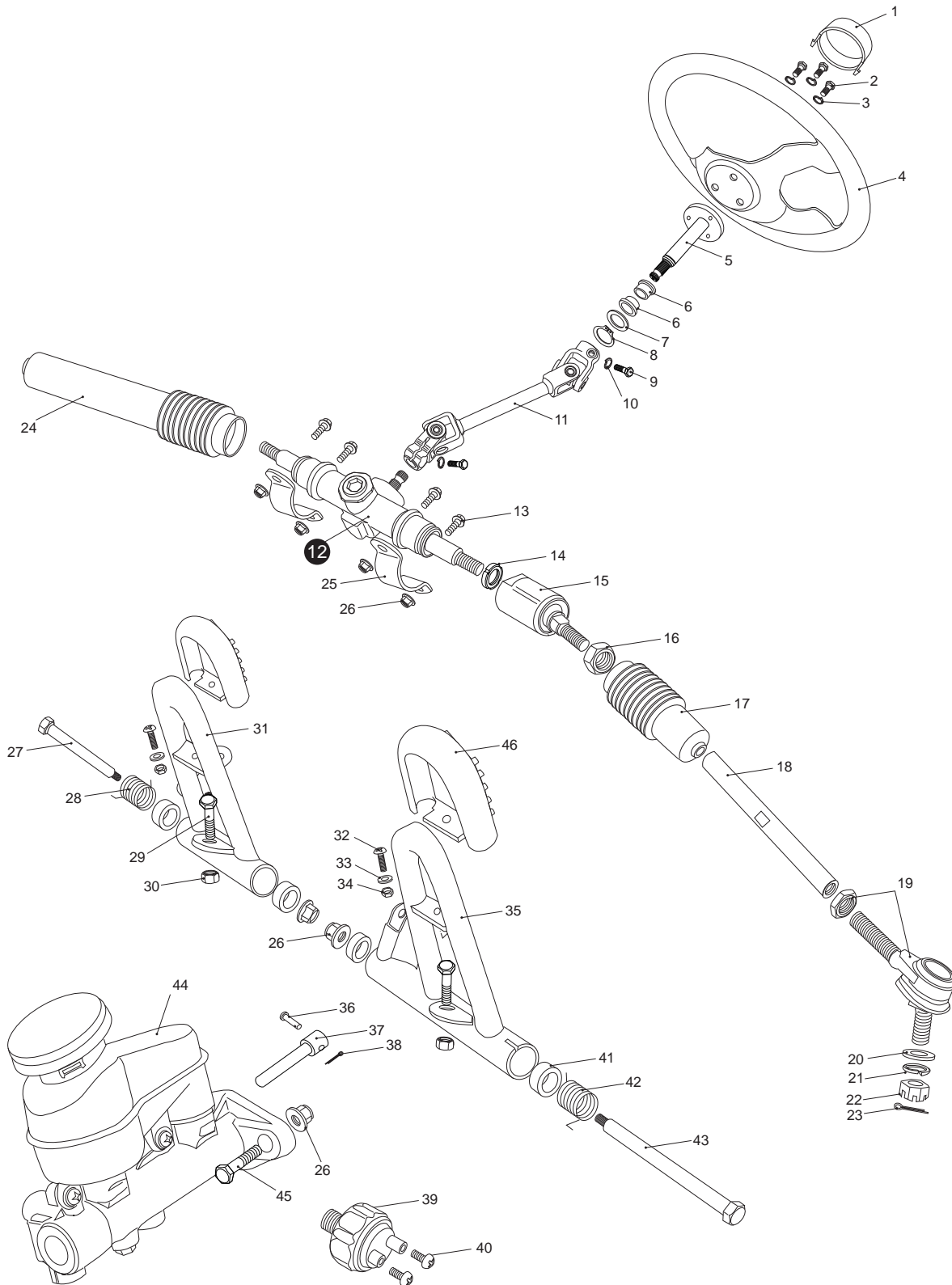


# PARTS MANUAL

FRAME GROUP				
REF NO.	PART NO.	DESCRIPTION	REGD NO.	
1	6.000.061	ROLL CAGE CROSS BAR. FR.	1	
2	8.070.034	ROLL CAGE BAR. LH. RH.	2	
3	8.080.033	ROLL CAGE CROSS BAR. RR.	2	
4	8.070.035	ROLL CAGE BAR. L. R. SIDE	2	
5	2.000.012	FRAME COMP	1	
6	8.010.047	R-WASHER	20	
7	9.108.055	BOLT-WASHER M8x1.25x55	8	
8	9.108.050	BOLT-WASHER M8x1.25x50	6	
9	9.220.008	NUT. FLANGE. LOCK M8	8	
10	9.700.001	BOLT. SPECIAL. M7/16"x28	2	
11	9.700.002	WASHER. BELT. Ø12	2	
12	9.700.003	NUT. BELT. M7/16"	2	
13	9.112.025	BOLT-WASHER M12x1.25x25	2	
14	9.220.012	NUT, FLANGE LOCK M12	2	
15	7.020.012	FOOT PLATE. RUBBER	4	
16	6.000.009	HEADLIGHT UNIT	2	
17	9.108.040	BOLT-WASHER M8x1.25x40	2	
18	8.010.048	COLLAR. HEADLIGHT	2	
19	8.010.049	BUSH. HEADLIGHT	2	
20	9.700.004	BOLT. BANJO M10x24	6	
21	7.020.024	HOSE ASSY. L. BRAKE. 34"	1	
22	7.020.025	HOSE ASSY. R. BRAKE. 43"	1	
23	7.020.026	HOSE ASSY. RR. BRAKE. 75"	1	
24	6.000.034	CABLE COMP. THROTTLE	1	
25	6.000.040	CABLE COMP. REVERSE	1	
26	6.000.050	CABLE COMP. PARKING BRAKE	1	
27	7.010.017	TUBE SEAT Ø25	8	
28	7.010.016	TUBE SEAT Ø32	2	
29	9.090.001	BULB, HEADLIGHT	2	

# FIG.17

## STEERING SHAFT ASSY.

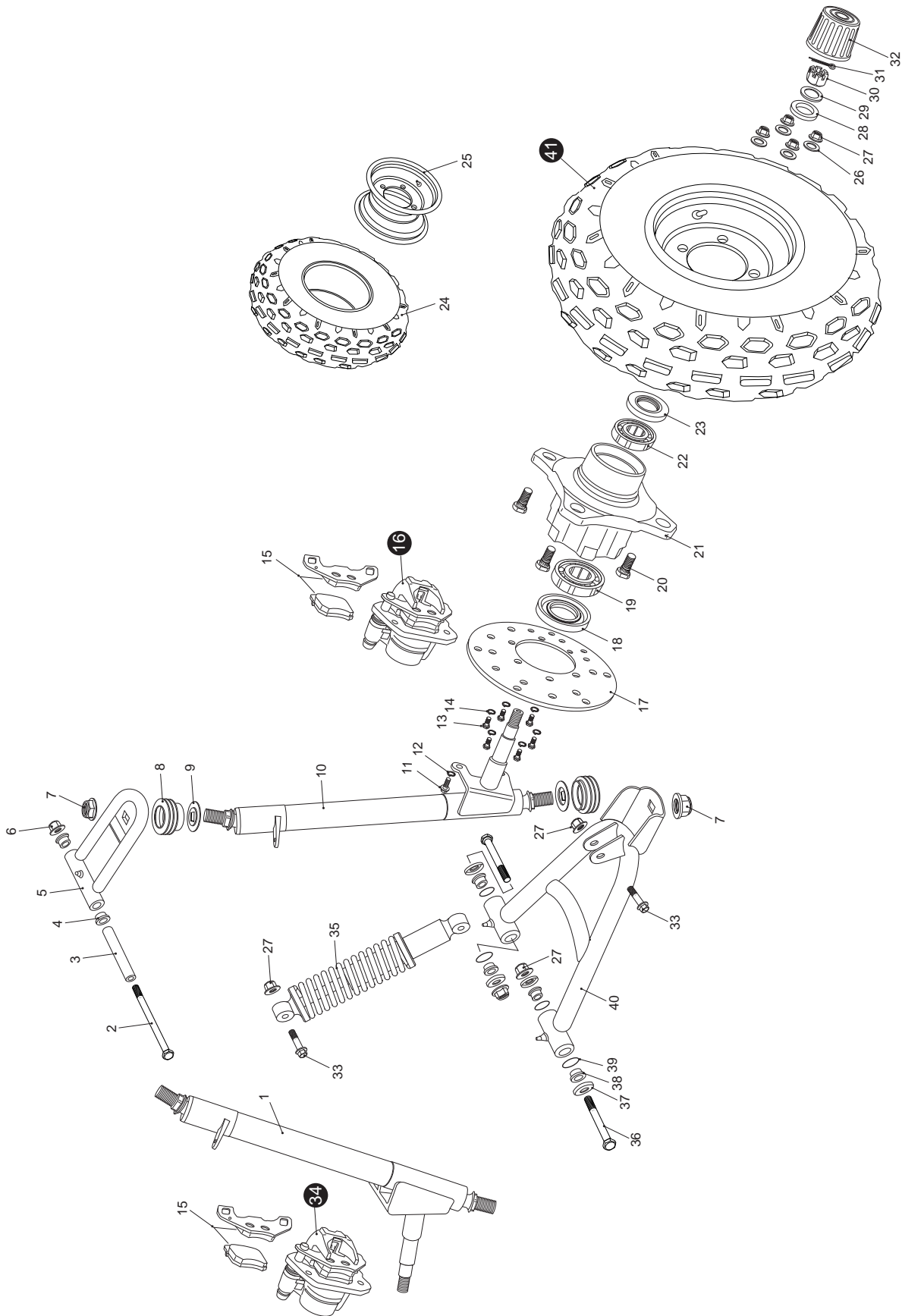


STEERING SHAFT ASSY.				
REF NO.	PART NO.	DESCRIPTION	REGD NO.	
1	7.010.014	COVER. STEERING BOLT	1	
2	9.100.612	BOLT. M6x12	3	
3	9.400.006	WASHER. LOCK $\varnothing$ 6	3	
4	7.020.010	STEERING WHEEL	1	
5	4.000.016	STEERING SHAFT	1	
6	7.010.026	BUSH. STEERING SHAFT	2	
7	9.700.020	WASHER. SPECIAL $\varnothing$ 20	1	
8	9.700.120	CIRCLIP $\varnothing$ 20	1	
9	9.100.825	BOLT M8x25	2	
10	9.400.008	WASHER. LOCK $\varnothing$ 8	2	
11	4.000.015	STEERING KNUCKLE	1	
12	4.000.014	STEERING GEAR	1	
13	9.108.025	BOLT-WASHER M8x1.25x25	4	
14	9.900.016	ROUND NUT M16x1.5	2	
15	4.000.008	STEERING BALL JOINT	2	
16	9.200.010	NUT. M10	2	
17	7.020.002	DUST COVER. L. BALL JOINT	1	
18	8.010.071	TIE ROD	2	
19	6.000.062	ROD END.	2	
20	9.300.010	WASHER. FLAT $\varnothing$ 10	2	
21	9.400.010	WASHER. LOCK $\varnothing$ 10	2	
22	9.800.010	NUT. CASTLE M10	2	
23	9.500.215	PIN. COTTER	2	
24	7.020.202	DUST COVER. R. BALL JOINT	1	
25	8.020.014	BRACKET. STEERING GEAR	2	
26	9.220.008	NUT. FLANGE LOCK M8	8	
27	9.708.145	BOLT. THROTTLE PEDAL M8x1.25x145	1	
28	8.040.001(LH)	SPRING. THROTTLE PEDAL RETURN	1	
29	9.108.040	BOLT-WASHER M8x1.25x40	2	
30	9.200.008	NUT M8	2	
31	4.000.016	THROTTLE PEDAL COMP.	1	
32	9.600.515	SCREW, PAN. M5x15	2	
33	9.300.005	WASHER. FLAT $\varnothing$ 5	2	
34	9.200.005	NUT M5	2	
35	4.000.015	BRAKE PEDAL COMP	1	
36	9.700.624	PIN 6x24	1	
37	8.010.004	PIN. SPINDLE	1	
38	9.500.212	PIN. COTTER 2X12	1	
39	6.000.063	SWITCH ASS'Y. BRAKE LAMP	1	
40	9.600.306	SCREW. PAN. M3x6	2	
41	7.010.004	BUSH. PEDAL	4	
42	8.040.001(RH)	SPRING. BRAKE PEDAL RETURN	1	
43	9.708.222	BOLT. BRAKE PEDAL M8x1.25x222	1	
44	6.000.027	MASTER CYLINDER	1	
45	9.108.025	BOLT-WASHER M8x1.25x25	2	
46	7.020.004	PEDAL PAD.	2	



# FIG.18

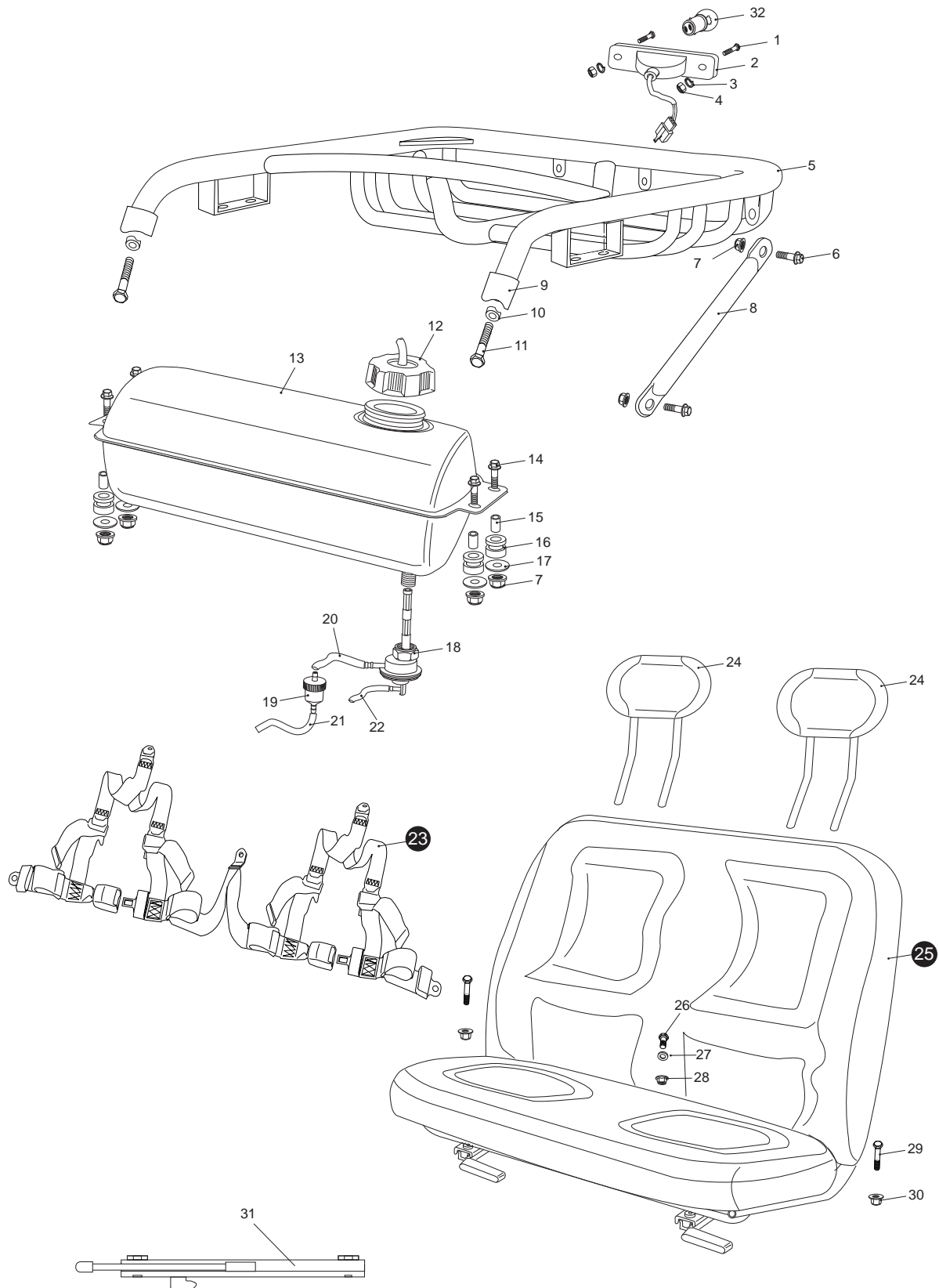
## SUSPENSION ARM ASSY.



SUSPENSION ARM ASSY.				
REF NO.	PART NO.	DESCRIPTION	REGD NO.	
1	2.000.005-L	SUPPORT. STRUT AND SPINDLE. L	1	
2	9.108.105	BOLT-WASHER M8x1.25x105	2	
3	8.010.015	SPACER. UPPER SUSPENSION ARM	2	
4	7.010.003	BUSH, UPPER SUSPENSION ARM	4	
5	4.000.004	UPPER SUSPENSION ARM	2	
6	9.220.008	NUT, FLANGE LOCK M8	2	
7	9.220.012	NUT, FLANGE LOCK M12	4	
8	7.020.025	DUST SEAL. BALL HEAD	4	
9	8.020.053	SPACER. BALL HEAD	4	
10	2.000.005-R	SUPPORT. STRUT AND SPINDLE. R	1	
11	9.100.814	BOLT M8x14	4	
12	9.400.008	WASHER LOCK $\varnothing 8$	4	
13	9.100.612	BOLT M6x12	12	
14	9.400.006	WASHER LOCK $\varnothing 6$	12	
15	7.020.016	PAD SET. FR. BRAKE CALIPER	2	
16	6.000.028-L	FRONT BRAKE CALIPER. L	1	
17	8.010.054	DISC. FR. BRAKE	2	
18	9.040.002	DUST SEAL 47x25-7	2	
19	9.030.002	BEARING 6204	2	
20	9.710.025	BOLT, TIRE M10x1.25x25	8	
21	8.010.055	HUB, FR. WHEEL	2	
22	9.030.003	BEARING 6203	2	
23	9.040.003	DUST SEAL 42x27-7	2	
24	6.000.003-I	TIRE, FR, 19x7-8	2	
25	6.000.003-G	RIM. FR.	2	
26	9.300.010	WASHER, FLAT $\varnothing 10$	8	
27	9.220.010	NUT, FLANGE LOCK M10	16	
28	8.010.043	SPACER. FR. HUB	2	
29	9.300.014	WASHER. FLAT $\varnothing 14$	2	
30	9.800.014	BOLT, CASTLE. M14	2	
31	9.500.330	PIN. COTTER $\varnothing 3 \times 30$	2	
32	7.020.009	COVER, DUST, HUB	2	
33	9.110.040	BOLT-WASHER M10x1.25x40	4	
34	6.000.028-R	FRONT BRAKE CALIPER. R	1	
35	6.000.325	CUSHION ASSY. FR. L=325	2	
36	9.110.080	BOLT-WASHER M10x1.25x80	4	
37	8.020.034	DUST CAP. LOWER SUSPENSION ARM	8	
38	7.010.002	BUSH. LOWER SUSPENSION ARM	8	
39	9.040.001	O-RING $\varnothing 21.2 \times 2.65$	8	
40	4.000.023	LOWER SUSPENSION ARM ASSY.	2	
41	6.000.003	FR. WHEEL ASSY.	2	

# FIG.19

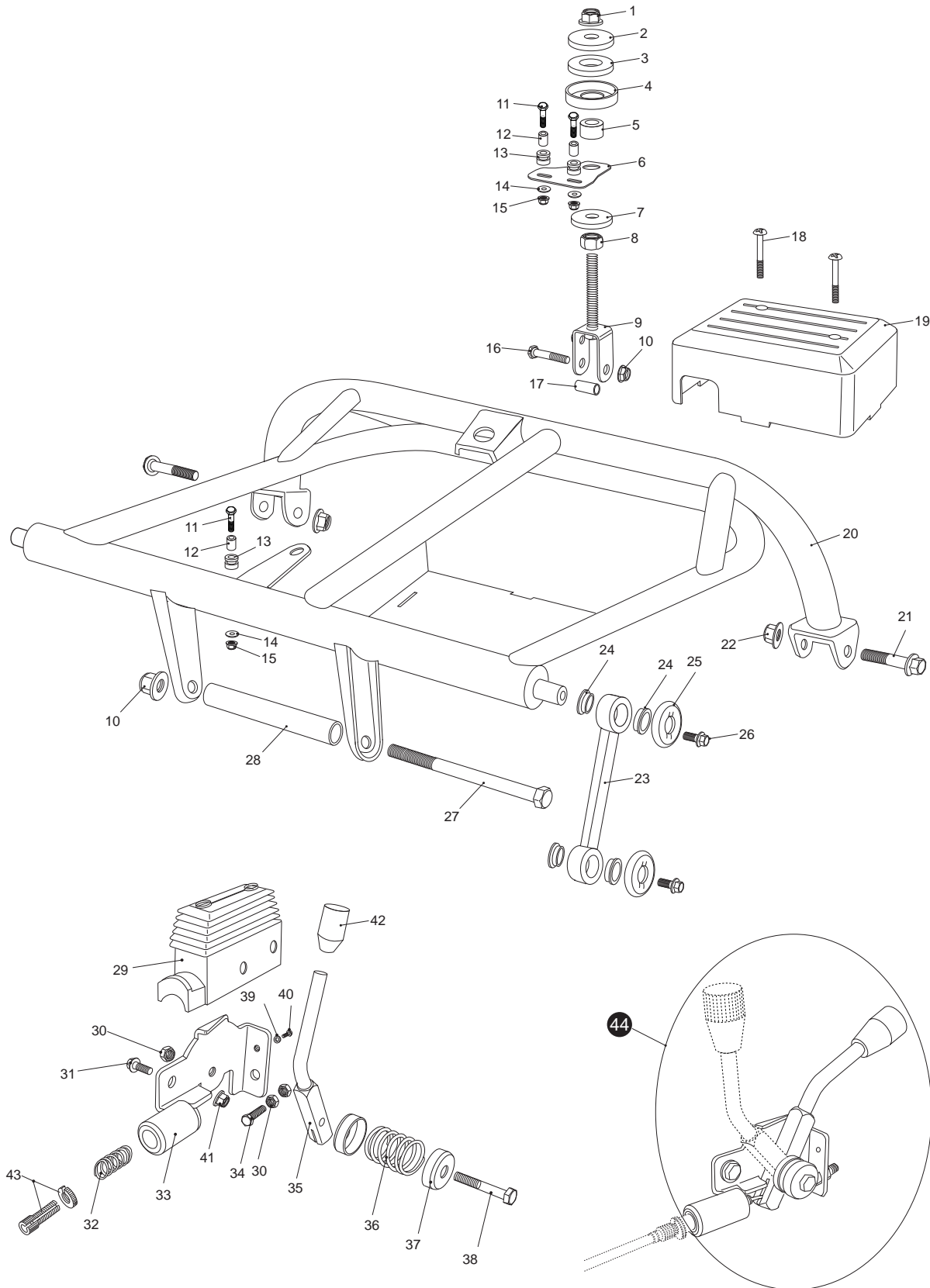
## REAR CARGO RACK/SEAT/BELT



REAR CARGO RACK/SEAT/BELT				
REF NO.	PART NO.	DESCRIPTION	REGD NO.	
1	9.600.520	SCREW. PAN. M5x20	2	
2	6.000.010	TAIL LIGHT	1	
3	9.400.005	WASHER LOCK Ø5	2	
4	9.200.005	NUT, M5	2	
5	2.000.001	REAR CARGO RACK	1	
6	9.108.020	BOLT-WASHER M8x1.25x20	4	
7	9.220.008	NUT, FLANGE LOCK M8	8	
8	8.080.029	SUPPORTER. REAR CARGO RACK	2	
9	7.010.016	TUBE SEAT Ø32	2	
10	8.010.047	R-WASHER	2	
11	9.108.055	BOLT-WASHER M8x1.25x55	2	
12	6.000.053	CAP COMP. FUEL FILLER	1	
13	4.000.011	TANK COMP. FUEL	1	
14	9.108.025	BOLT-WASHER M8x1.25x25	4	
15	8.010.034	COLLAR. TANK COMP.	4	
16	7.020.005	RUBBER MOUNT	4	
17	9.300.008	WASHER FLAT Ø8	4	
18	6.000.046	COCK ASS'Y., FUEL AUTO	1	
19	6.000.056	FILTER	1	
20	7.020.021	TUBE COMP. FUEL. #1	1	
21	7.020.022	TUBE COMP. FUEL. #2	1	
22	7.020.023	TUBE COMP. VACUUM	1	
23	6.000.045	BELT, SAFETY	1	
24	6.000.011	HEAD-REST	2	
25	8.000.044	SEAT COMP	1	
26	9.700.001	BOLT, SPECIAL. M7/16"x28	1	
27	9.700.002	WASHER, BELT Ø12	1	
28	9.700.003	NUT, BELT M7/16"	1	
29	9.100.840	BOLT M8x1.25x40	2	
30	9.220.008	NUT FLANGE LOCK M8	2	
31	6.000.057	RAIL SET. SEAT	1	
32	9.090.002	BULB. TAIL LIGHT	1	

# FIG.20

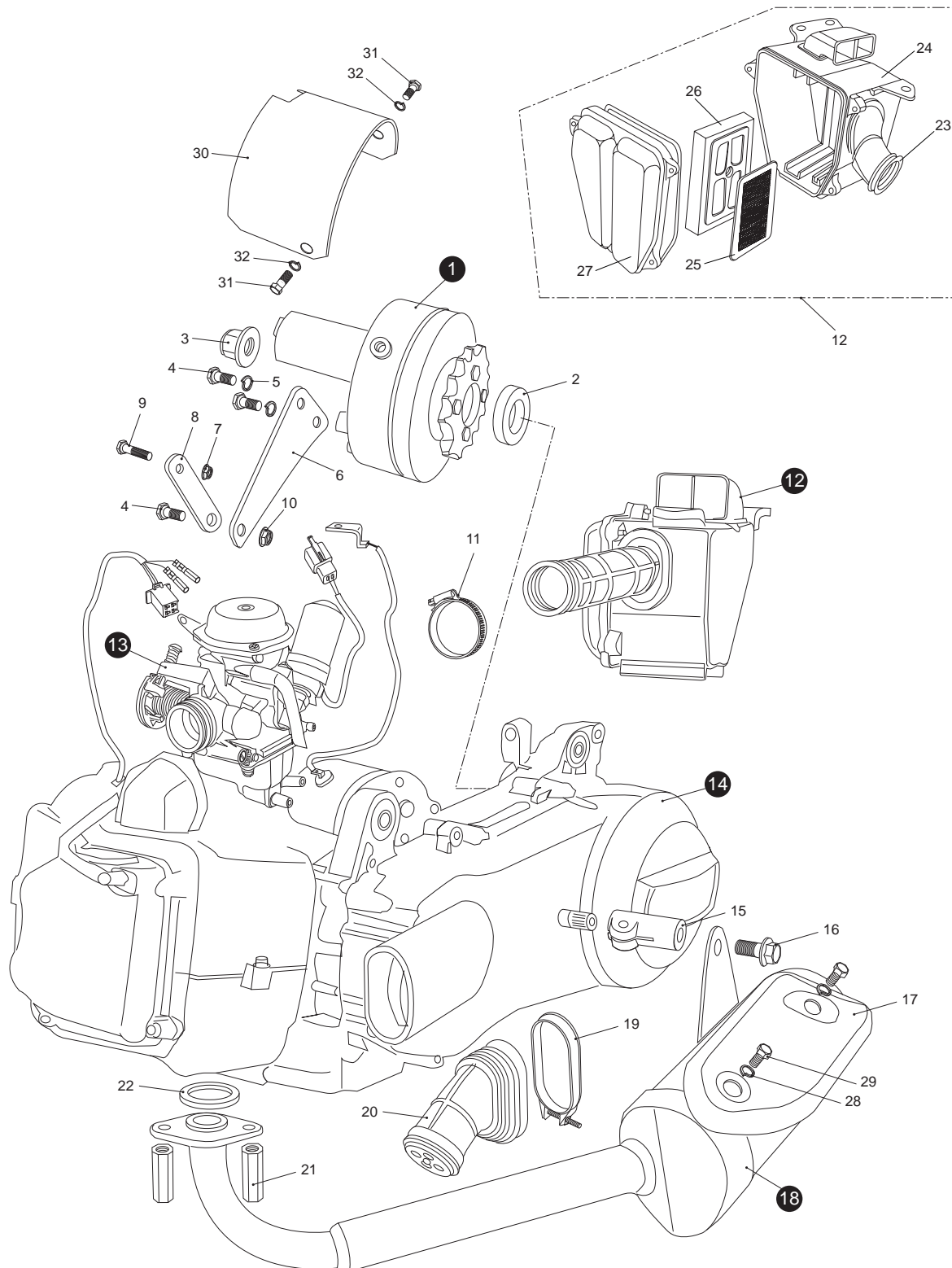
## REAR SWING ARM ASSY. UPPER



REAR SWING ARM ASS'Y. UPPER				
REF NO.	PART NO.	DESCRIPTION	REGD NO.	
1	9.220.012	NUT. FLANGE LOCK M12	1	
2	8.010.042	WASHER. ENGINE MOUNT LINK	1	
3	7.020.001	CUSHION. ENGINE MOUNT LINK	1	
4	8.020.045	SPACER. ENGINE MOUNT LINK	1	
5	8.010.041	COLLAR. ENGINE MOUNT LINK	1	
6	8.020.044	BRACKET. AIR CLEANER ASSY.	1	
7	9.300.012	WASHER, FLAT Ø12	1	
8	9.200.012	NUT, M12	1	
9	6.000.026	ENGINE MOUNT LINK	1	
10	9.220.010	NUT, FLANGE LOCK M10	1	
11	9.100.635	BOLT M6x35	3	
12	8.010.034	COLLAR. BRACKET	3	
13	7.020.005	RUBBER MOUNT	3	
14	9.300.006	WASHER Ø6	3	
15	9.200.006	NUT M6	3	
16	9.110.045	BOLT-WASHER M10x1.25x45	1	
17	8.010.076	SPACER. ENGINE	1	
18	9.600.655	SCREW. PAN. M6x55	2	
19	7.010.029	COVER. ELECTRIC ASS'Y.	1	
20	2.000.203	REAR SWING ARM ASS'Y. UPPER	1	
21	9.112.060	BOLT-WASHER M12x1.25x60	2	
22	9.220.012	NUT, FLANGE LOCK M12	2	
23	8.030.001	CON' ROD	2	
24	7.010.008	BUSH. CON' ROD	8	
25	8.020.013	WASHER. CON' ROD	4	
26	9.108.016	BOLT-WASHER M8x1.25x16	4	
27	9.710.195	BOLT-WASHER M10x1.25x195	1	
28	8.010.025	SPACER, ENGINE MOUNT	1	
29	7.020.024	COVER, REVERSE LEVER	2	
30	9.200.008	NUT, M8	6	
31	9.108.020	BOLT-WASHER M8x1.25x20	2	
32	8.040.004	SPRING, CABLE.	1	
33	6.000.064	BRACKET, LEVER	2	
34	9.100.830	BOLT M8x30	2	
35	6.000.065	LEVER. REVERSE, PARKING BRAKE	2	
36	8.040.003	SPRING, LEVER	2	
37	8.020.082	SPACER, LEVER	4	
38	9.108.040	BOLT-WASHER M8x1.25x40	2	
39	9.300.005	WASHER FLAT Ø5	2	
40	9.600.512	SCREW, PAN, M5x12	2	
41	9.220.008	NUT FLANGE LOCK M8	2	
42	7.020.026	COVER, LEVER .GREEN / BLACK	2	
43	6.000.051	ROD ADJUSTING, CABLE	2	
44	6.000.042	PARKING BRAKE/REVERSE LEVER ASS'Y.	2	

# FIG.21

## ENGINE/MUFFLER/AIR CLEANER

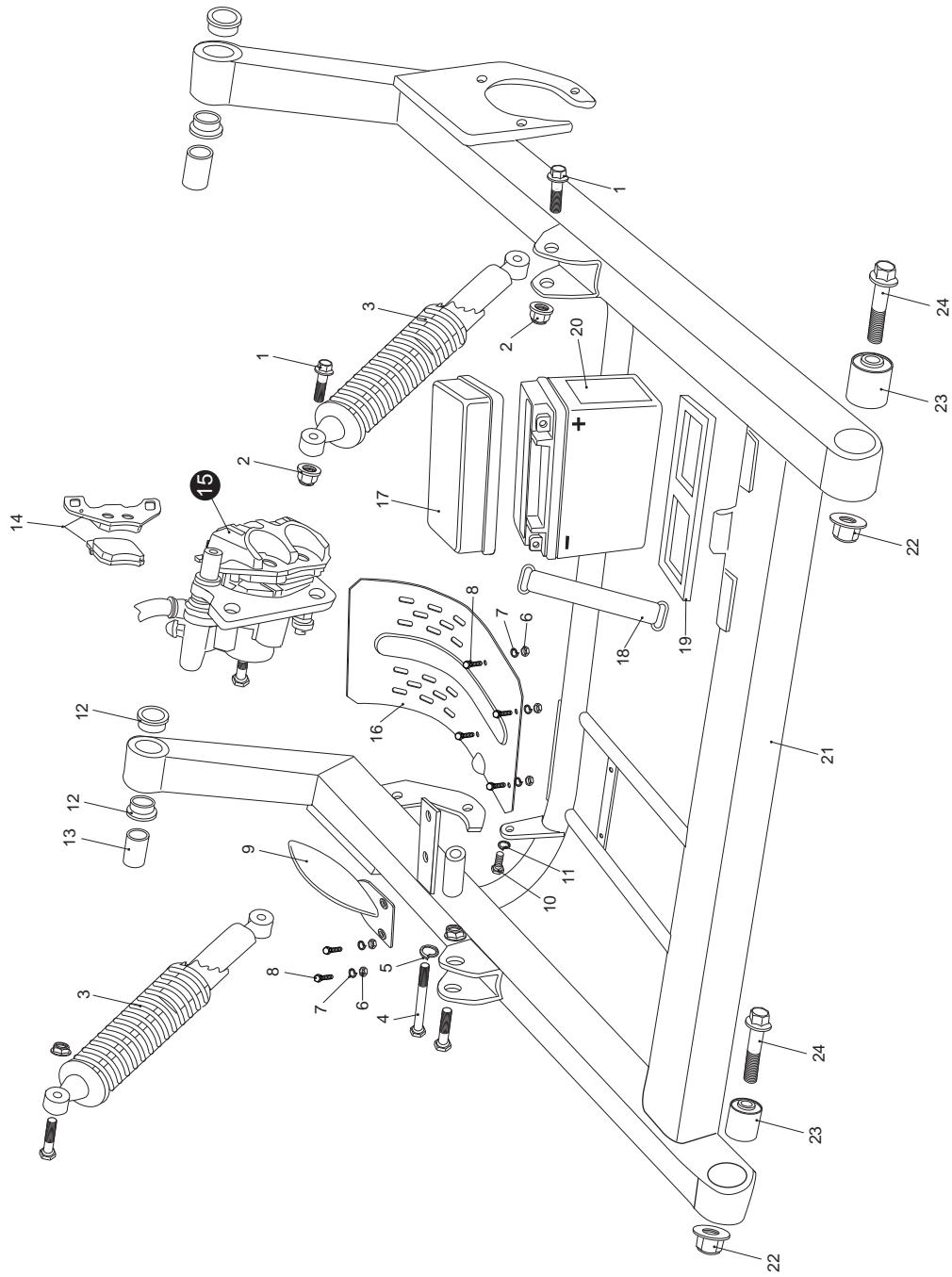


ENGINE/MUFFLER/AIR CLEANER				
REF NO.	PART NO.	DESCRIPTION	REGD NO.	
1	6.000.019	REVERSE ASS'Y.	1	
2	8.010.050	INTERNAL COLLAR, REVERSE	1	
3	9.220.016	NUT FLANGE LOCK M16	1	
4	9.101.020	BOLT, M10x20	3	
5	9.400.010	WASHER LOCK $\varnothing$ 10	1	
6	8.020.057	BRACKET, REVERSE	1	
7	9.200.008	NUT, FLANGE LOCK M8	1	
8	8.020.058	CONNECTOR PANEL, REVERSE	1	
9	9.100.840	BOLT. M8x1.25x40	1	
10	9.400.010	NUT, FLANGE LOCK M10	1	
11	8.020.056	BAND, AIR CLEANER CONNECTING TUBE	1	
12	6.000.017	AIR CLEANER ASS'Y.	1	
13	6.000.024	CARBURETOR	1	
14	2.000.009	ENGINE, 150cc	1	
15	8.030.005	RACK SUPPORT, MUFFLER	1	
16	9.101.025	BOLT. M10x25	1	
17	6.000.215	PROTECTOR, MUFFLER	1	
18	6.000.015	MUFFLER COMP, EX	1	
19	8.020.055	CLAMP, BOOT	1	
20	7.020.012	BOOT, SIDE CASE	2	
21	9.040.027	NUT, MUFFLER JOINT, M6	1	
22	9.040.005	GASKET, EX, PIPE	1	
23	7.020.013	AIR CLEANER CONNECTING TUBE	1	
24	7.010.021	CASE COMP. AIR CLEANER	1	
25	7.010.022	ELEMENT, AIR CLEANER	1	
26	7.010.023	ELEMENT, AIR CLEANER SECOND	1	
27	7.010.024	COVER, AIR CLEANER	2	
28	9.400.005	WASHER LOCK $\varnothing$ 5	2	
29	9.100.612	BOLT, M6x12	2	
30	8.020.076	CHAIN PROTECTOR, RR.	1	
31	9.100.816	BOLT, M8x16	2	
32	9.400.008	WESHER LOCK $\varnothing$ 8	2	



# FIG.22

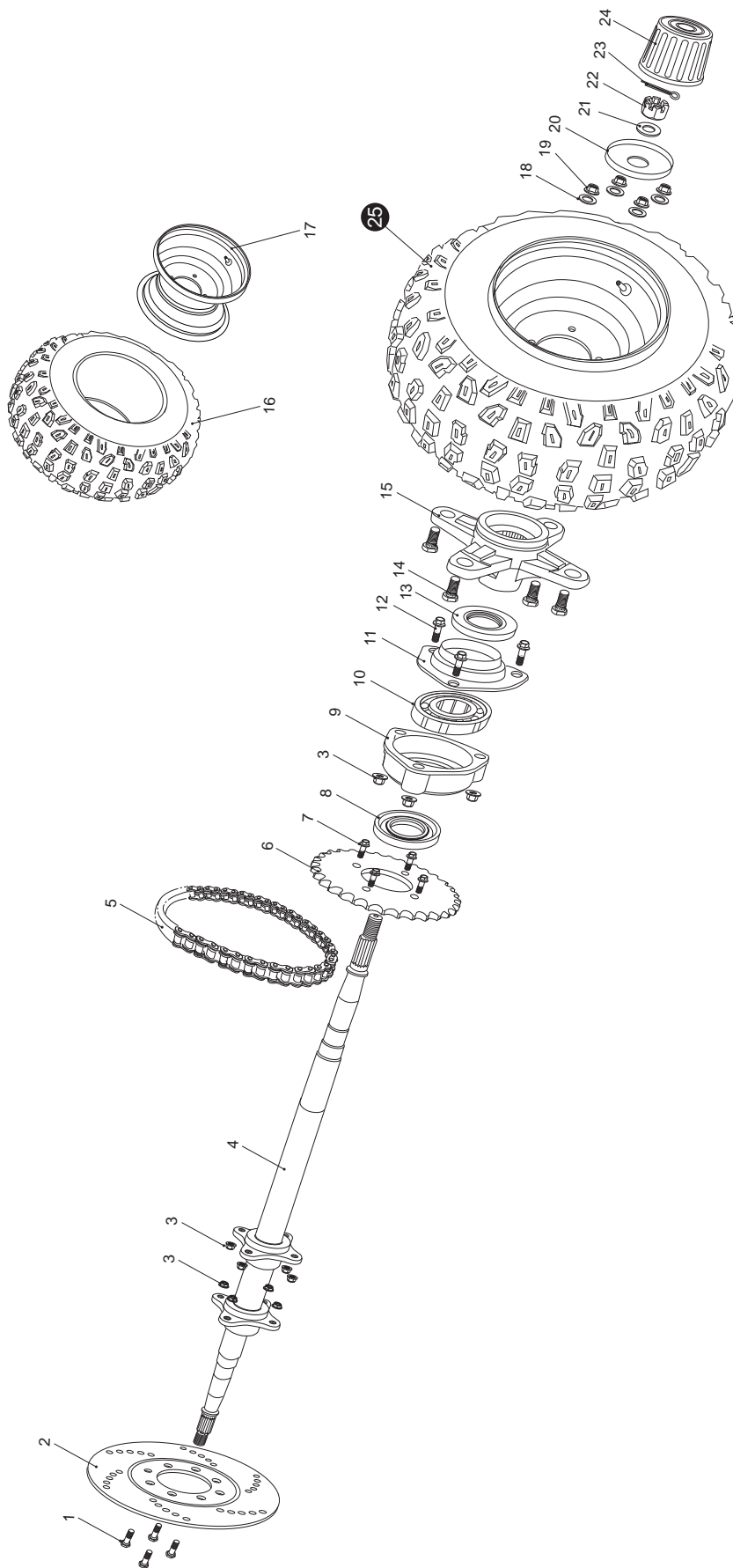
## REAR SWING ARM





# FIG.23

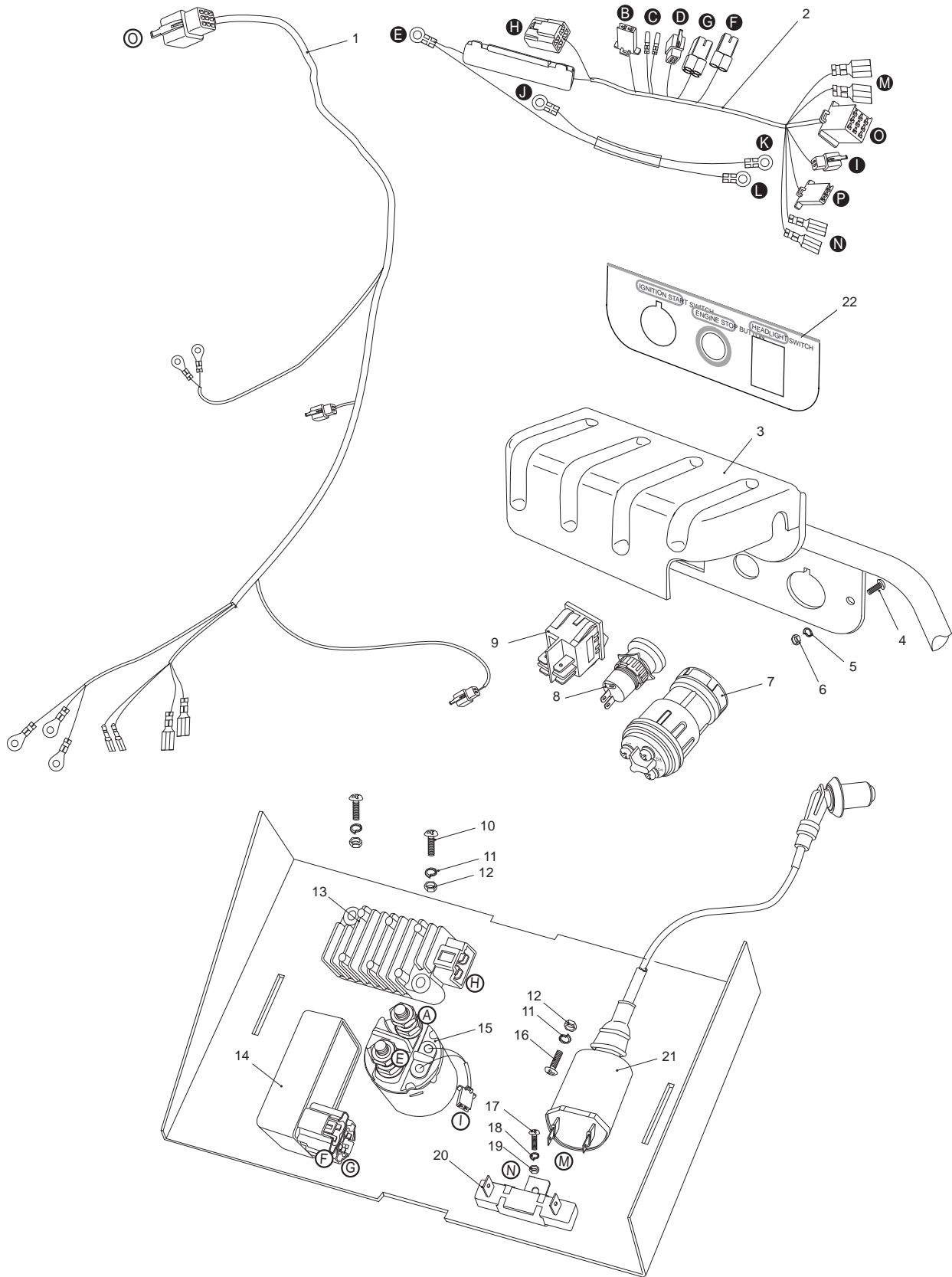
## REAR HOUSING





# FIG.24

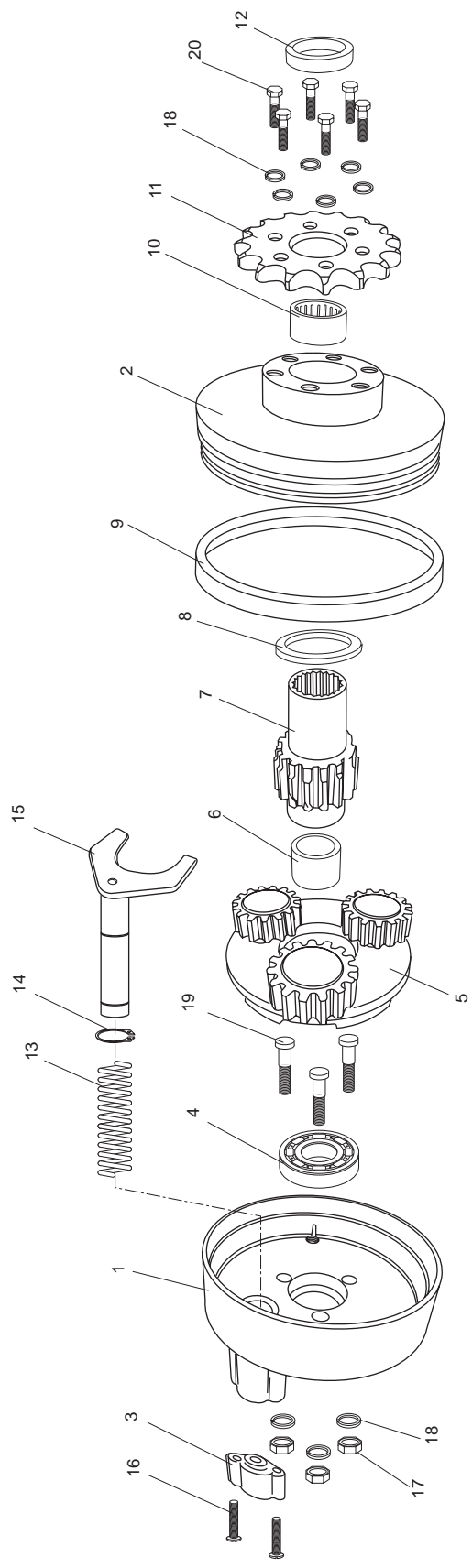
## WIRE HARNESS/ELECTRICAL





# FIG.25

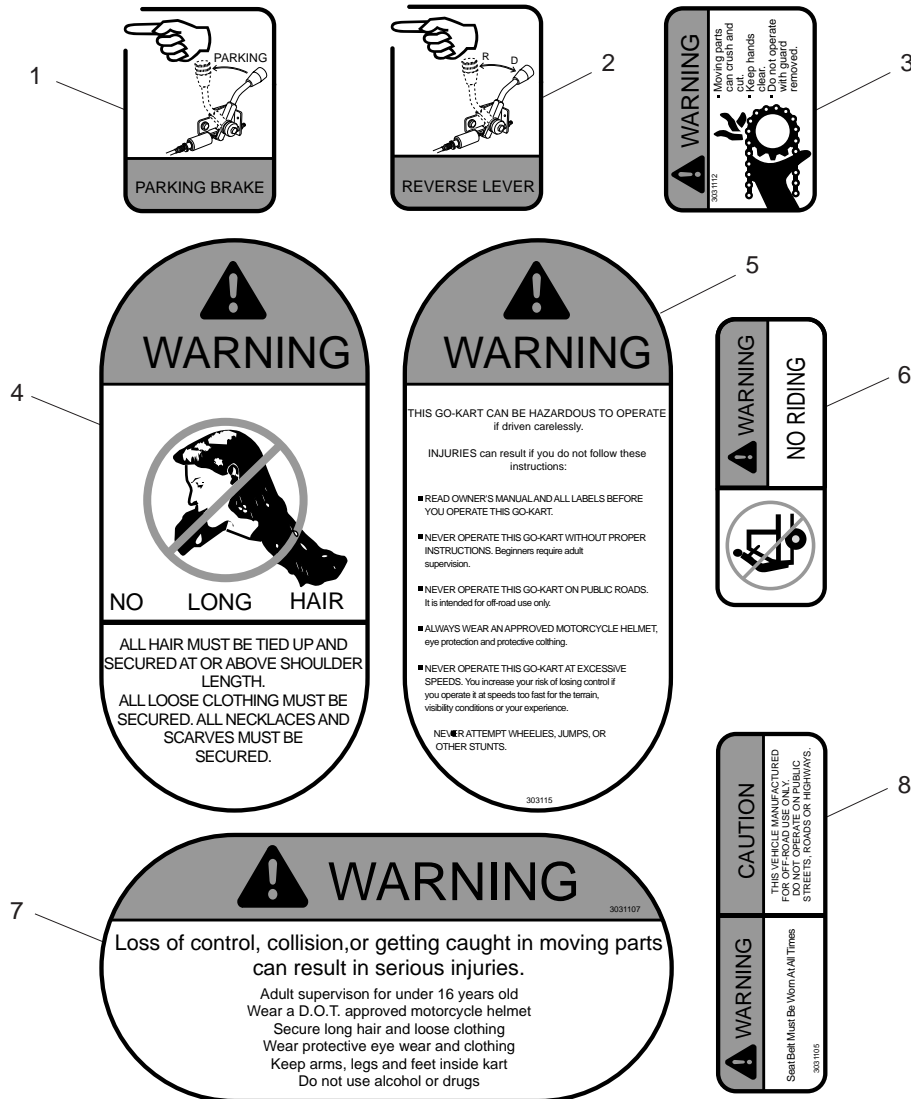
REVERSE ASSY.







## WARNING STICKERS



WARNING STICKERS				
REF NO.	PART NO.	DESCRIPTION	REGD NO.	
1	9.090.007	LABEL, PARKING BRAKE	1	
2	9.090.008	LABEL, REVERSE LEVER	1	
3	9.090.009	LABEL, CHAIN GUARD	1	
4	9.090.010	LABEL, NO LONG HAIR	1	
5	9.090.011	LABEL, WARNING	1	
6	9.090.012	LABEL, NO CLIMBING	1	
7	9.090.013	LABEL, WARNING	1	
8	9.090.014	LABEL, SEAT BELT	1	