



2024 Hammerhead

Mudhead 208R

Owner's Manual

for Maintenance and Safety



WARNING

Read, understand, and follow all of the instructions and safety precautions in this manual and on all product labels.

Failure to follow the safety precautions could result in serious injury or death.



WARNING

Operating, servicing, and maintaining a passenger vehicle or off-road vehicle can expose you to chemicals including engine exhaust, carbon monoxide, phthalates, and lead, which are known to the State of California to cause cancer and birth defects or other reproductive harm. To minimize exposure, avoid breathing exhaust, do not idle the engine except as necessary, service your vehicle in a well-ventilated area and wear gloves or wash your hands frequently when servicing your vehicle.

For more information go to www.P65Warnings.ca.gov/passenger-vehicle.



For videos and more information about a safe riding experience with your Polaris vehicle, scan this QR Code® with your smartphone or visit: www.polaris.com/en-us/safety



2024 Owner's Manual

Hammerhead Mudhead 208R

Unless noted, trademarks are the property of Polaris Industries Inc.

NGK® is a registered trademark of NGK Spark Plug Co., Ltd. Recreational Off-Highway Vehicle Association® and ROHVA® are registered trademarks of Recreational Off-Highway Vehicle Association. QR Code® is a registered trademark of DENSO WAVE INCORPORATED.

Copyright 2023 Polaris Industries Inc. All information contained within this publication is based on the latest product information at the time of publication. Due to constant improvements in the design and quality of production components, some minor discrepancies may result between the actual vehicle and the information presented in this publication. Depictions and/or procedures in this publication are intended for reference use only. No liability can be accepted for omissions or inaccuracies. Any reprinting or reuse of the depictions and/or procedures contained within, whether whole or in part, is expressly prohibited.

The original instructions for this vehicle are in English. Other languages are provided as translations of the original instructions.

Printed in China

9941328 R01



Thank you for purchasing a POLARIS vehicle, and welcome to our world-wide family of POLARIS enthusiasts. Be sure to visit us online at www.polaris.com for the latest news, new product introductions, upcoming events, career opportunities and more.

Here at POLARIS we proudly produce an exciting line of utility and recreational products. We believe POLARIS sets a standard of excellence for all utility and recreational vehicles manufactured in the world today. Many years of experience have gone into the engineering, design, and development of your POLARIS vehicle, making it the finest machine we've ever produced.

For safe and enjoyable operation of your vehicle, be sure to follow the instructions and recommendations in this owner's manual. Your manual contains instructions for minor maintenance, but information about major repairs is outlined in the POLARIS Service Manual and can be performed by a factory certified Master Service Dealer (MSD) technician.

Your POLARIS dealer knows your vehicle best and is interested in your total satisfaction. Your POLARIS dealership can perform all of your service needs during and after the warranty period.

For the most up-to-date owner's manual visit <https://www.polaris.com/en-us/owners-manuals>.

WELCOME

Introduction	7
Safety	11
Features and Controls	25
Operation	31
Emission Control Systems	43
Maintenance	45
Specifications	77
Troubleshooting	79
Warranty	83
Maintenance Log	91

INTRODUCTION

SAFETY SYMBOLS AND SIGNAL WORDS

The following signal words and symbols appear throughout this manual and on your vehicle. Your safety is involved when these words and symbols are used. Become familiar with their meanings before reading the manual.

 **DANGER**

DANGER indicates a hazardous situation which, if not avoided, WILL result in death or serious injury.

 **WARNING**

WARNING indicates a hazardous situation which, if not avoided, COULD result in death or serious injury.

 **CAUTION**

CAUTION indicates a hazardous situation which, if not avoided, COULD result in minor to moderate injury.

NOTICE

NOTICE provides key information by clarifying instructions.

IMPORTANT

IMPORTANT provides key reminders during disassembly, assembly, and inspection of components.

The Prohibition Safety Sign indicates an action NOT to take in order to avoid a hazard.



The Mandatory Action Sign indicates an action that NEEDS to be taken to avoid a hazard.



HAMMERHEAD WARNING

 **WARNING**

Failure to heed the warnings and safety precautions contained in this manual can result in severe injury or death. Your HAMMERHEAD vehicle is not a toy and can be hazardous to operate. This vehicle handles differently than cars, trucks or other off-road vehicles. A collision or rollover can occur quickly, even during routine maneuvers like turning, or driving on hills or over obstacles, if you fail to take proper precautions.

- Read this owner's manual. Understand all safety warnings, precautions and operating procedures before operating the vehicle. Keep this manual with the vehicle.
- You **MUST** be at least age 10 to operate this vehicle.
- No person under the age of 10 may ride as a passenger in this vehicle. All riders must be able to sit with backs against the seat and both hands on the steering wheel (if driving) or on a passenger hand hold.
- Always keep hands, feet and all other body parts inside the vehicle at all times.
- Always wear a helmet, eye protection, gloves, long-sleeve shirt, long pants and over-the-ankle boots.
- Do not operate this vehicle at night or during periods of limited visibility.
- Never use this vehicle with drugs or alcohol, as these conditions impair judgment and reduce operator reaction time.
- Complete the steps outlined in the New Operator Driving Procedures section. Never allow a guest to operate this vehicle until the guest has watched the instructional video and has completed the New Operator Driving Procedures.

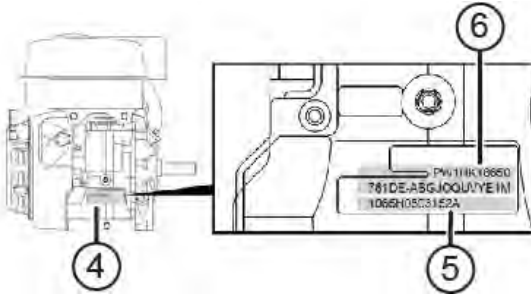
VEHICLE IDENTIFICATION NUMBERS

Record your vehicle's identification numbers in the spaces provided. Remove the spare key and store it in a safe place.



- ① Manufacturing Data Label
- ② Vehicle Identification Number
- ③ Engine Serial Number*
- ④ Engine Model Number Location
- ⑤ Serial Number
- ⑥ Model Number

*Engraved on the side of the block to the right of the recoil.



Vehicle Model Number:	
Vehicle Identification Number (VIN):	
Engine Serial Number:	

SAFETY

SAFE RIDING GEAR

Always wear a helmet, eye protection, gloves, long-sleeve shirt, long pants, over-the-ankle boots and seat belt (if equipped) at all times. Protective gear reduces the chance of injury.

RIDER COMFORT

Under certain operating conditions, heat generated by the engine and exhaust system can elevate temperatures in the rider cab area. The condition occurs most frequently when a vehicle is being operated in high ambient temperatures at low speeds and/or high load conditions for an extended period of time. The use of certain windshield, roof and/or cab systems may contribute to this condition by restricting airflow.

Any discomfort due to heat buildup in this area can be minimized by wearing proper riding apparel and by varying speeds to increase airflow.

- ① Helmet
- ② Eye Protection
- ③ Long Sleeves
- ④ Gloves
- ⑤ Long Pants
- ⑥ Over-the-Ankle Boots



SAFETY

CLOTHING

Wear long sleeves and long pants to protect arms and legs.

HELMET

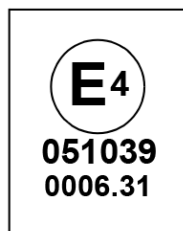
Wearing a helmet can prevent a severe head injury. Whenever riding this HAMMERHEAD vehicle, always wear a helmet that meets or exceeds established safety standards. Clasp the buckle and pull each strap tight to ensure the helmet is properly secured to the head.

Parents should verify that young operators have a helmet that fits, and should obtain one of proper size if it does not fit before allowing operation.

Approved helmets in the USA and Canada bear a U.S. Department of Transportation (DOT) label.



Approved helmets in Europe, Asia and Oceania bear the ECE 22.05 label. The ECE mark consists of a circle surrounding the letter E, followed by the distinguishing number of the country which has granted approval. The approval number and serial number will also be displayed on the label.



EYE PROTECTION

Do not depend on eyeglasses or sunglasses for eye protection. Whenever riding this HAMMERHEAD vehicle, always wear shatterproof goggles or use a shatterproof helmet face shield. HAMMERHEAD recommends wearing approved Personal Protective Equipment (PPE) bearing markings such as VESC 8, V-8, Z87.1, or CE. Make sure protective eye wear is kept clean.

GLOVES

Wear gloves for comfort and for protection from sun, cold weather and other elements.

BOOTS

Wear sturdy over-the-ankle boots for support and protection. Never ride a HAMMERHEAD vehicle with bare feet or sandals.

SAFETY WARNINGS

WARNING

Failure to operate this vehicle properly can result in a collision, loss of control, accident or rollover, which may result in serious injury or death. Heed all safety warnings outlined in this section of the owner's manual and in the safety DVD provided with your vehicle.

Be sure to read all of the following warnings about driving hazards and how to avoid them. These warnings are provided for your child's safety. Be sure to explain to your young driver that the hazards outlined in this section of this owner's manual **MUST** be avoided at all times. See the OPERATION section of this owner's manual for proper operating procedures.

FOR MORE INFORMATION ABOUT SAFETY call POLARIS at 1-800-342-3764.

OPERATING WITHOUT INSTRUCTION



Operating this vehicle without proper instruction increases the risk of an accident. The operator and the supervising adult must understand how to operate the vehicle properly in different situations and on different types of terrain.

All operators must read and understand this owner's manual and all warning and instruction labels before operating the vehicle.

Never allow a guest to operate this vehicle until the guest has read this manual and all product labels.

AGE RESTRICTIONS



This vehicle is for recreational use by young operators under adult supervision **ONLY**.

Operation is prohibited for anyone under age 10. Operators must be able to sit with backs against the seat, both feet flat on the floor and both hands on the steering wheel.

SAFETY

RIDER HEIGHT



Some riders may be too tall to ride safely in this vehicle. Do not operate or ride in this vehicle if the clearance between the top of your helmet and the overhead cab frame is **less than 2 inches (5 cm)**.

SEAT BELTS

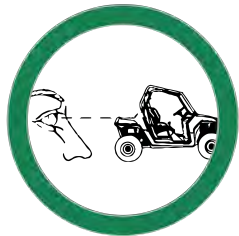
Riding in this vehicle without wearing the seat belt increases the risk of serious injury in the event of rollover, loss of control, other accident or sudden stop. Seat belts may reduce the severity of injury in these circumstances. Riders *must* wear seat belts at all times. Always make sure the seat belts are secured for both the operator and passenger before riding.

USING ALCOHOL OR DRUGS



Never consume alcohol or drugs before or while operating this vehicle. Operating this vehicle after consuming alcohol or drugs could adversely affect operator judgment, reaction time, balance and perception.

FAILURE TO INSPECT BEFORE OPERATING



Failure to inspect and verify that the vehicle is in safe operating condition before operating increases the risk of an accident.

Always perform the pre-ride inspection before each use of your vehicle to make sure it's in safe operating condition.

Always follow the inspection and maintenance procedures and schedules described in this manual and your Vehicle Manual.

PROTECTIVE APPAREL



Riding in this vehicle without wearing an approved helmet and protective eye wear increases the risk of a serious injuries in the event of an accident.

Always wear a helmet, eye protection, gloves, long-sleeve shirt, long pants and over-the-ankle boots.

CARRYING A PASSENGER

Never carry a passenger until you have operated this vehicle for at least four hours and have completed the steps in the New Operator Driving Procedures.

CARRYING MULTIPLE PASSENGERS



A passenger must always be seated in a passenger seat with seat belt secured.

Carrying more than one passenger in this vehicle can affect the operator's ability to steer and operate the controls, which increases the risk of loss of control and accident or rollover.

Never carry more than one passenger in this vehicle.

OPERATING ON PAVEMENT



This vehicle's tires are designed for off-road use only, not for use on pavement. Operating this vehicle on paved surfaces (including sidewalks, paths, parking lots and driveways) may adversely affect the handling of the vehicle and may increase the risk of loss of control and accident or rollover.

Avoid operating the vehicle on pavement. If it's unavoidable, travel slowly, travel short distances and avoid sudden turns or stops.

SAFETY

OPERATING ON PUBLIC ROADS



Operating this vehicle on public streets, roads or highways could result in a collision with another vehicle.

Never operate this vehicle on any public street, road or highway, including dirt and gravel roads (unless designated for off-highway use).

OPERATING AT EXCESSIVE SPEEDS



Operating this vehicle at excessive speeds increases the operator's risk of losing control.

Always operate at a speed that's appropriate for the terrain, the visibility and operating conditions and your skills and experience.

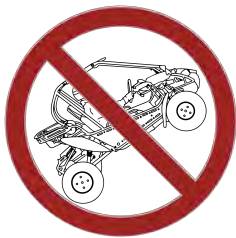
TURNING IMPROPERLY



Turning improperly could cause loss of traction, loss of control, accident or rollover. Always follow proper procedures for turning as described in this owner's manual.

Avoid sharp turns. Never turn while applying heavy throttle. Never make abrupt steering maneuvers. Practice turning at slow speeds before attempting to turn at faster speeds.

JUMPS AND STUNTS



Exhibition driving increases the risk of an accident or rollover. **DO NOT** do power slides, "donuts," jumps or other driving stunts. Avoid exhibition driving.

CROSSING HILLSIDES



Driving on a sidehill is not recommended. Improper procedure could cause loss of control or rollover. Avoid crossing the side of any hill unless absolutely necessary.

If crossing a hillside is unavoidable, always follow proper procedures as described in this owner's manual.

PHYSICAL CONTROL OF THE VEHICLE

Removing hands from the steering wheel or hand holds or removing feet from the floor while riding increases the risk of loss of control and accident or rollover.

The operator should always keep both hands on the steering wheel during operation. A passenger should always be seated in the passenger seat with both feet on the floor and with both hands securely grasping the hand holds.

Always keep hands and feet inside the vehicle at all times.

DRIVING DOWNHILL IMPROPERLY

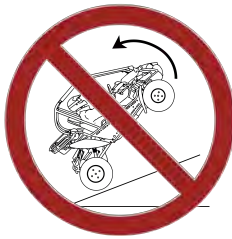
Driving down a hill improperly could cause loss of control or rollover.

Always follow proper procedures for driving down a hill as described in this owner's manual.

IMPROPER HILL CLIMBING

Improper hill climbing could cause loss of control or rollover. Use extreme caution when operating on hills. Always follow proper procedures for hill climbing as described in this owner's manual. Never operate the vehicle on hills steeper than 15 degrees.

STALLING WHILE CLIMBING A HILL



Stalling or rolling backwards while climbing a hill could cause a rollover. Maintain a steady speed when climbing a hill.

If you lose all forward speed: Apply the brakes gradually until the vehicle is fully stopped. Place the transmission in reverse and slowly allow the vehicle to roll straight downhill while applying light brake pressure to control speed.

SAFETY

OPERATING IN UNFAMILIAR TERRAIN



Failure to use extra caution when operating on unfamiliar terrain could result in an accident or rollover.

Unfamiliar terrain may contain hidden rocks, bumps, or holes that could cause loss of control or rollover. Travel slowly and use extra caution when operating on unfamiliar terrain. Always be alert to changing terrain conditions.

OPERATING ON SAND OR SLIPPERY TERRAIN



Operating on sand or on excessively rough, slippery or loose terrain could cause loss of traction, loss of control, accident or rollover.

Always use extra caution when operating on sand or on rough, slippery or loose terrain. Do not operate on excessively rough, slippery or loose terrain.

OPERATING IMPROPERLY IN REVERSE



Improperly operating in reverse could result in a collision with an obstacle or person. Always follow proper operating procedures as outlined in this manual.

Before shifting into reverse gear, always check for obstacles or people behind the vehicle. When it's safe to proceed, back slowly.

OVERLOADING THE VEHICLE

Overloading the vehicle or carrying/towing loads may cause changes in stability and handling, which could cause loss of control or an accident.

- Never tow objects or carry loads with this vehicle.
- Never exceed the maximum weight capacity for this vehicle.

OPERATING OVER OBSTACLES



Improperly operating over obstacles could cause loss of control or rollover.

Before operating in a new area, check for obstacles. Avoid operating over large obstacles such as large rocks and fallen trees. Always follow the proper procedures outlined in this manual when operating over obstacles.

OPERATING THROUGH WATER



Operating through deep or fast-flowing water can cause loss of traction, loss of control, rollover or accident. Never operate in fast-flowing water or in water that exceeds the floor level. Always follow proper procedures for operating in water as described in this owner's manual. Wet brakes may have reduced stopping ability. After leaving water, test the brakes. Apply them lightly several times while driving slowly. The friction will help dry out the pads.

OPERATING ON FROZEN BODIES OF WATER



Severe injury or death can result if the vehicle and/or the operator fall through the ice. Never operate the vehicle on a frozen body of water unless you have first verified that the ice is sufficiently thick to support the weight and moving force of the vehicle, you and your cargo, together with any other vehicles in your party.

Always check with local authorities and residents to confirm ice conditions and thickness over your entire route. Vehicle operators assume all risk associated with ice conditions on frozen bodies of water.

IMPROPER TIRES AND MAINTENANCE

Operating this vehicle with improper tires or with improper or uneven tire pressure could cause loss of control, accident or rollover.

Always use the size and type of tires specified for your vehicle. Always maintain proper tire pressure as described in this owner's manual and on safety labels.

OPERATING A DAMAGED VEHICLE



Operating a damaged vehicle can result in an accident. After any rollover or other accident, have a qualified service dealer inspect the entire machine for possible damage, including (but not limited to) seat belts, rollover protection devices, brakes, throttle, and steering systems.

REFUELING

Gasoline is highly flammable and is explosive under certain conditions. Always exercise extreme caution whenever handling gasoline.

- Never allow a child to refuel or handle gasoline.
- Never carry fuel or other flammable liquids on this vehicle. Failure to follow this instruction could lead to serious injury or death.
- Always stop the engine when refueling.
- Always refuel outdoors or in a well ventilated area.
- Do not smoke or allow open flames or sparks in or near the refueling area or where gasoline is stored.
- Never refuel while a person is in the vehicle.
- Do not over fill the tank. Do not fill the tank neck.
- If gasoline spills on your skin or clothing, immediately wash it off with soap and water and change clothing.

EXPOSURE TO EXHAUST



Engine exhaust fumes are poisonous and can cause loss of consciousness or death in a short time. Never start the engine or let it run in an enclosed area. Operate this vehicle only outdoors or in well-ventilated areas.

HOT EXHAUST SYSTEMS

 **WARNING**

Exhaust system components are very hot during and after use of the vehicle. Hot components can cause burns and fire. Do not touch hot exhaust system components. Always keep combustible materials away from the exhaust system.

Use caution when traveling through tall grass, especially dry grass and when traveling through muddy conditions. Always inspect the underside of the vehicle and areas near the exhaust system after driving through tall grass, weeds, brush, other tall ground cover, and muddy conditions. Promptly remove any grass, debris or foreign matter clinging to the vehicle and pay particular attention to the exhaust system area.

UNAUTHORIZED USE OF THE VEHICLE

Leaving the keys in the ignition can lead to unauthorized use of the vehicle by someone under the age of 10 or without proper training. This could result in an accident or rollover. Always remove the ignition key when the vehicle is not in use.

EQUIPMENT MODIFICATIONS

Your HAMMERHEAD vehicle is designed to provide safe operation when used as directed.

 **WARNING**

Modifying this vehicle in any way can change the top speed, stability and handling performance of this vehicle. Modifications that increase speed, decrease stability or change performance may present a greater risk to inexperienced or younger operators and could result in loss of control and serious injury or death. Use only HAMMERHEAD-approved accessories to modify this vehicle. Review all vehicle changes prior to operating.

The HAMMERHEAD limited warranty on your HAMMERHEAD vehicle will be terminated if any non-HAMMERHEAD-approved equipment and/or modifications have been added to the vehicle that increase speed or power.

SAFETY

SAFETY LABELS AND LOCATIONS

Warning labels have been placed on the vehicle for your protection. Read and follow the instructions on each label carefully. If any of the labels shown in this manual differ from the labels on your vehicle, always read and follow the instructions of the labels on the vehicle.

If an informational or graphic label becomes illegible or comes off, contact your HAMMERHEAD dealer to purchase a replacement. Replacement safety labels are provided by HAMMERHEAD at no charge.

PROPER USE WARNING

WARNING

This go-kart can be hazardous to operate if driven carelessly. Injuries can result if you do not follow these instructions:

- Read owner's manual and all labels before you operate this go-kart.
- Never operate this go-kart without proper instructions. Beginners require adult supervision.
- Never operate this go-kart on public roads. It is intended for off-road use only.
- Always wear an approved motorcycle helmet, eye protection and protective clothing.
- Never operate this go-kart at excessive speeds. You increase your risk of losing control if you operate it at speeds too fast for the terrain, visibility conditions or your experience.
- Never attempt wheelies, jumps, or other stunts.

LONG HAIR WARNING

WARNING

NO LONG HAIR

All hair must be tied up and secured at or above shoulder length. All loose clothing must be secured. All necklaces and scarves must be secured.



GENERAL WARNING

WARNING

Loss of control, collision, or getting caught in moving parts can result in serious injuries.

- No operation under age of 10 allowed.
- Wear a D.O.T. approved motorcycle helmet.
- Secure long hair and loose clothing.
- Wear protective eye wear and clothing.
- Keep arms, legs and feet inside kart.
- Do not use alcohol or drugs.

⚠ CAUTION

This vehicle manufactured for off-road use only. Do not operate on public streets, roads, or highways.

MOVING PARTS WARNING

WARNING

- Moving parts can crush and cut.
- Keep hands clear.
- Do not operate with guards removed.



SEAT BELT WARNING

WARNING

Seat belt must be worn at all times.

RIDING WARNING

WARNING

No Riding.



REPORTING SAFETY DEFECTS (CANADA)

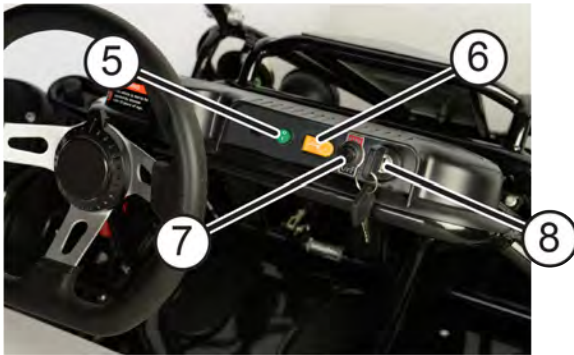
To report a safety defect to Transport Canada, you may either fill out an online defect complaint form at their website (English: <http://www/tc/gc/ca/recalls>, French: <http://www.tc.gc.ca/rappels>) or contact their Defect Investigations and Recalls Division by calling toll-free 1-800-333-0510 (Canada) or 819-994-3328 (Ottawa-Gatineau area / International).

FEATURES AND CONTROLS

COMPONENT LOCATIONS



- ① Headlights
- ② Steering Wheel
- ③ Hip Bars
- ④ Brush Guards



- ⑤ Headlight Switch
- ⑥ Horn
- ⑦ Engine Kill Switch
- ⑧ Key Ignition

SEATS

DRIVER'S SEAT ADJUSTMENT

1. Lift the seat latch lever located under the left front edge of the driver's seat.
2. While holding the lever upward, slide the seat forward or rearward to the desired position, then release the lever.
3. Slide the seat forward and rearward to ensure the latch is engaged. Before operating the vehicle, always make sure both seats are securely installed.

SEAT BELTS

This HAMMERHEAD vehicle is equipped with three-point lap and diagonal seat belts for the operator and passenger. Always make sure the seat belts are secured for the operator and passenger before riding.

3-POINT SEAT BELT

To wear the 3-point seat belt properly, follow this procedure:

1. Pull the seat belt latch downward and across your chest toward the buckle at the inner edge of the seat. The belt should fit snugly across your hips and diagonally across your chest. Make sure the belt is not twisted.
2. Push the latch plate into the buckle until it clicks.
3. Pull on the strap to tighten.
4. To release the seat belt, press the square red button in the buckle's center.

SEAT BELT INSPECTION

Inspect all seat belts for proper operation before each use of the vehicle.

1. Push the latch plate into the buckle until it clicks. The latch plate must slide smoothly into the buckle. A click indicates that it's securely latched.
2. Push the red release latch in the middle of the buckle to make sure it releases freely.
3. Pull each seat belt completely out and inspect the full length for any damage, including cuts, wear, fraying or stiffness. If any damage is found, or if the seat belt does not operate properly, have the seat belt system checked and/or replaced by an authorized dealer.
4. To clean dirt or debris from the seat belts, sponge the straps with mild soap and water. Do not use bleach, dye or household detergents.

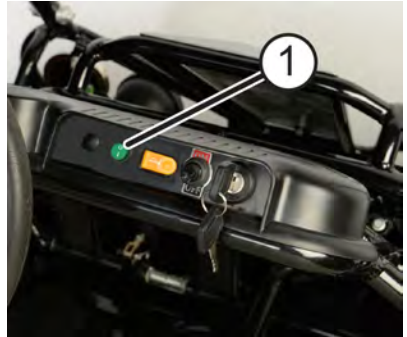
SWITCHES

ENGINE ON / OFF SWITCH

The vehicle is equipped with an engine ON/OFF Switch. Toggling the switch to the OFF position shuts down the engine. Before driving this vehicle, test the Engine ON/OFF Switch to assure that it operates properly. Place the switch in the ON position and follow the starting procedure outline in this manual. Once the engine is running, toggle the Engine ON/OFF Switch to the OFF position and verify the engine shuts down.

LIGHT SWITCH

The ignition switch key must be in the ON/RUN position to operate the headlights. Press the red headlight switch in to activate the headlights. Press the switch once more to release it and deactivate the headlights.



HORN (NON-LE MODELS)

The vehicle is equipped with a horn. To use, press in on horn button.

BRAKE PEDAL

Depress the brake pedal to slow or stop the vehicle. Apply the brakes while starting the engine.

THROTTLE PEDAL

Push the throttle pedal^① down to increase engine speed. Spring pressure returns the pedal to the rest position when released. Always check that the throttle pedal returns normally before starting the engine. Make sure there's adequate throttle pedal freeplay. See the Throttle Freeplay Adjustment section for procedures.

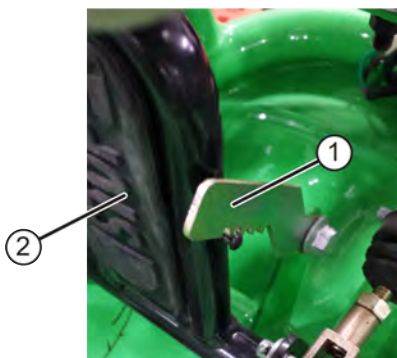


FEATURES AND CONTROLS

PARKING BRAKE

This vehicle is equipped with a parking brake. To utilize the brake interlock follow the procedure below.

1. Apply the brakes.
2. When the vehicle is fully stopped, rotate the interlock lever to make contact with the locking pin^① of the brake pedal^②.
3. Depress the pedal and allow the teeth of the interlock lever to grasp the locking pin, holding the brake pedal depressed.
4. To release the brake interlock, depress the brake pedal further, to free the interlock lever and return the interlock lever to its resting position.



TIP

Always set the parking brake whenever the vehicle is left unattended.

WARNING

Operating the vehicle while the parking brake is engaged could cause an accident resulting in serious injury or death. It could also result in driveline or engine damage. Always be sure to disengage the interlock brake before operating the vehicle and return the interlock brake lever to its resting position.

GEAR SELECTOR

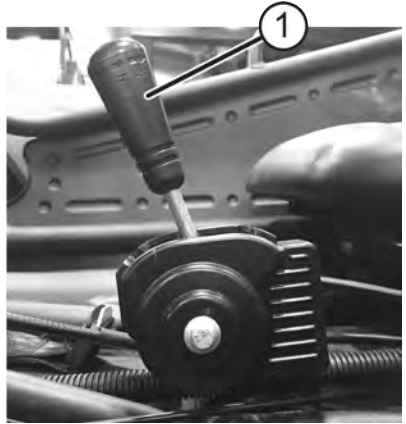
The following applies to the Mudhead 208R, certain models of the Mudhead do not have a Gear Selector.

F: Forward

N: Neutral

R: Reverse

The gear selector^① is located between the seats. To change gears, stop the vehicle, and with the engine idling, move the lever to the desired gear. Do not attempt to shift gears with engine speed above idle or while the vehicle is moving.



TIP

Maintaining shift linkage adjustment is important to assure proper transmission function. Your authorized dealer can assist in resolving any shifting problems.

NOTICE

Do not attempt to shift the transmission while the vehicle is moving or damage to the transmission could result. Always shift when the vehicle is stationary and the engine is at idle.

MECHANICAL SPEED CONTROL SYSTEM

The adjustable throttle limiting screw is located behind the throttle pedal. Use the following procedure to control how far the throttle opens.

1. Loosen the jam nut.
2. Unscrew the bolt to the desired stopping point.

FEATURES AND CONTROLS

FUEL CAP

The fuel tank filler cap^① is located in the rear of the vehicle, behind the seats. When refueling, always use unleaded gasoline with a minimum pump octane number of 87 R+M/2 octane. Non-ethanol fuel is recommended. *Do not use fuel with ethanol content greater than 10 percent, such as E-85 fuel.*



RIDE COMMAND+ (IF EQUIPPED)

Your vehicle may come equipped with RIDE COMMAND+ technology, which gives you access to your vehicle's custom information including Vehicle Health, Vehicle Locator and Issue Diagnostics along with a variety of features via the Polaris mobile app. You will need a cellular connection to view these features.

To learn more about RIDE COMMAND+, including equipped or compatible vehicles, specific features, and to access the RIDE COMMAND+ User Guide, visit [ridecommand.polaris.com/ridecommand+](https://polaris.com/ridecommand+) or scan the QR code:



Disclaimer: RIDE COMMAND+ only available in North America.

OPERATION

IMPORTANT INFORMATION

 **WARNING**

Failure to operate the vehicle properly can result in a collision, loss of control, accident or rollover, which may result in serious injury or death. Read and understand all safety warnings outlined in the safety section of this owner's manual.

VEHICLE BREAK-IN PERIOD

The break-in period for your new HAMMERHEAD vehicle is defined as the first five (5) hours of operation.

No single action on your part is as important as a proper break-in period. Careful treatment of a new engine and drive components will result in more efficient performance and longer life for these components. Perform the following procedures carefully.

 **NOTICE**

Excessive heat build-up during the first three hours of operation will damage close-fitted engine parts and drive components. Do not operate at full throttle or high speeds during the first three hours of use.

Mixing brands or using a non-recommended oil may cause serious engine damage. Always use the recommended oil. Never substitute or mix oil brands.

ENGINE AND DRIVETRAIN BREAK-IN

1. Fill the fuel tank with gasoline. Always exercise extreme caution whenever handling gasoline. See the Refueling section for details.
2. Check the oil level. See the Oil Check section for details. Add the recommended oil as needed to maintain the oil level in the safe operating range.
3. Complete the steps detailed in the New Operator Driving Procedures section.
4. Avoid aggressive use of the brakes. See Brake System Break-in section for details.
5. Vary throttle positions. Do not operate at sustained idle.
6. Perform regular checks on fluid levels, controls, and areas outlined on in the Pre-Ride Inspection section's checklist.

OPERATION

7. Change the engine oil at five (5) hours.
8. Adjust and lubricate the drive chain at five (5) hours.

BRAKE SYSTEM BREAK-IN

Apply only moderate braking force for the first 50 stops. Aggressive or overly forceful braking when the brake system is new could damage brake pads and rotors.

CVT BREAK-IN (CLUTCHES / BELT)

A proper break-in of the clutches and drive belt will ensure a longer life and better performance. Break in the clutches and belt by operating at slower speeds during the break-in period as recommended. Avoid aggressive acceleration and high speed operation during the break-in period.

PRE-RIDE INSPECTION

Failure to inspect and verify that the vehicle is in safe operating condition before operating increases the risk of an accident. Always inspect the vehicle before each use to make sure it's in safe operating condition.

ITEM	REMARKS	REF.
Brake system/pedal travel	Ensure proper operation	page 27 page 62
Brake fluid	Ensure proper level	page 63
Front suspension	Inspect, lubricate if necessary	page 49
Rear suspension	Inspect, lubricate if necessary	page 49
Steering	Ensure free operation	page 63
Tires	Inspect condition and pressure	page 22 page 65
Wheels/fasteners	Inspect, ensure fastener tightness	page 66
Frame nuts, bolts, fasteners	Inspect, ensure tightness	–
Fuel and oil	Ensure proper levels	page 50
Grass and Debris	Remove grass, leaves, foreign matter, and other flammable material or debris, especially near the exhaust system	–
Throttle	Ensure proper operation	page 61
Indicator lights/switches	Ensure proper operation	–

ITEM	REMARKS	REF.
Air Filter	Inspect and clean or replace	page 59
Daytime running lights	Ensure proper operation	page 66
Brake Light	Ensure proper operation	–
Seat Latches	Move the seats forward and rearward to ensure correct installation	page 26
Seat Belts	Check length of belt for damage, check latches for proper operation	page 26

SAFE OPERATION PRACTICES

1. Visit the Recreational Off-Highway Vehicle Association® web site (rohva.org) and take the free on-line training course. Complete the recommended safety training before operating this vehicle.
2. Do not allow anyone under 16 years of age or without a valid driver's license to operate this vehicle.
3. Never operate with a passenger under the age of 12. Never carry more one passenger in a 2-seat vehicle. Never allow a passenger to ride in the cargo box.
4. Engine exhaust fumes are poisonous. Never start the engine or let it run in an enclosed area.
5. Never operate with accessories not approved by HAMMERHEAD for use on this vehicle.
6. Operate this vehicle off-road only. Never operate the vehicle on pavement or on any public street, road or highway, including dirt and gravel roads.
7. Drive in a manner appropriate for your skills and operating conditions. Never operate at excessive speeds. Never attempt wheelies, jumps, or other stunts. Keep both hands on the steering wheel during operation.
8. Never consume alcohol or drugs before or while operating this vehicle.
9. Always use the size and type of tires specified for your vehicle. Always maintain proper tire pressure.
10. Never operate a damaged vehicle. After any rollover or accident, have a qualified service dealer inspect the entire machine for possible damage.
11. Never operate the vehicle on a frozen body of water unless you have first verified that the ice is sufficiently thick to support the weight and moving force of the vehicle, you and your passenger, and your cargo, together with any other vehicles in your party.

OPERATION

12. Do not touch hot exhaust system components. Always keep combustible materials away from the exhaust system.
13. Always remove the ignition key when the vehicle is not in use to prevent unauthorized use.

STARTING THE ENGINE

NOTICE

Operating the vehicle immediately after starting could cause engine damage. Allow the engine to warm up for several minutes before operating the vehicle.

TIP

The choke is fully on when it's pulled out. The choke is off when it's completely pushed in. The choke can be adjusted gradually depending on how much choke is needed for starting.

1. Sit in the driver's seat and fasten the seat belt.
2. Place the transmission in neutral.
3. Apply the brakes.
4. If the engine is cold, use full choke by pulling the choke all the way out. A warm engine will not require the use of the choke.
5. Do not press the throttle pedal while starting the engine.
6. Turn the ignition key past the ON/RUN position to START. Engage the starter for a maximum of five seconds. Release the key when the engine starts.
7. If the engine does not start within five seconds, return the ignition switch to the OFF position and wait five seconds. Repeat steps 6 and 7 until the engine starts.
8. Vary the engine RPM slightly with the throttle to aid in warm-up until the engine idles smoothly.
9. Verify the brake interlock is disengaged before driving.

STOPPING THE ENGINE

1. Release the throttle pedal completely and brake to a complete stop.
2. Place the transmission in neutral.
3. Stop the engine.
4. Turn key to off position.
5. Engage the interlock brake.

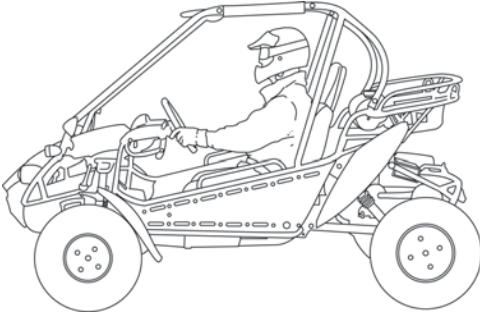
BRAKING

1. Release the throttle pedal completely. (When the throttle pedal is released completely and engine speed slows to near idle, the vehicle has no engine braking).
2. Press on the brake pedal evenly and firmly. Practice starting and stopping (using the brakes) until you're familiar with the controls.

PARKING THE VEHICLE

1. Stop the vehicle on a level surface. When parking inside a garage or other structure, be sure that the structure is well ventilated and that the vehicle is not close to any source of flame or sparks, including any appliance with pilot lights.
2. Place the transmission in neutral.
3. Stop the engine.
4. Remove the ignition key to prevent unauthorized use.
5. Engage the interlock brake.

NEW OPERATOR DRIVING PROCEDURES



1. Read and understand this owner's manual and all warning and instruction labels before operating this vehicle.
2. Visit the Recreational Off-Highway Vehicle Association® web site (rohva.org) and take the free on-line training course. Hands-on training is also available through ROHVA®.
3. Review the sections of this owner's manual about starting the engine, stopping the engine, braking, and parking.
4. Perform the steps detailed in the Pre-Ride Inspection section.

OPERATION

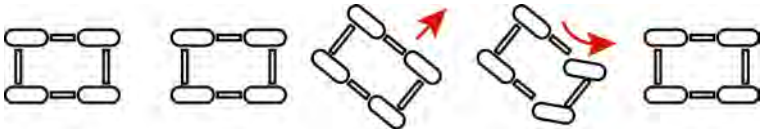
5. The driver and passenger must wear helmet, eye protection, gloves, long-sleeve shirt, long pants, over-the-ankle boots and seat belt at all times.
6. Do not operate or ride in this vehicle if the clearance between the top of your helmet and brush bar is less than 2 inches (5 cm).
7. Select a level open area to practice driving. Make sure you have permission to drive in this area.
8. Sit in the driver's seat and fasten the seat belt.
9. Make sure all passengers secure their seat belts.
10. Do not carry a passenger until you have at least four hours of driving experience with this vehicle.
11. Apply the brakes and verify the brake interlock is disengaged.
12. Place the transmission in neutral if available.
13. Keeping the brakes applied, start the engine. See the Starting the Engine section for details.
14. Keeping the brakes applied, shift into gear if applicable.
15. Release the parking brake.
16. Check your surroundings. Make sure the area is clear of people and obstacles.
17. Keeping both hands on the steering wheel, slowly release the brakes and press the throttle with your right foot to begin driving.
18. Drive slowly at first. Practice starting, stopping, turning, using the throttle and brakes and driving in reverse on applicable models. Learn how the vehicle handles when making both left and right turns at a slow speed.
19. Increase speed only after mastering all maneuvers at a slow speed.
20. After you become skilled at making turns and begin to operate at faster speeds, follow these precautions:
 - Avoid sharp turns. Make turns gradually.
 - Never turn while applying heavy throttle.
 - Never turn the steering wheel abruptly.
 - Operate at speeds appropriate for your skills, the conditions and the terrain.
 - DO NOT attempt to do power slides, "donuts", jumps or other driving stunts.

DRIVING ON SLIPPERY SURFACES

When driving on slippery surfaces such as wet trails, loose gravel, sand or ice, be alert for the possibility of skidding and sliding.

Follow these precautions when driving in slippery conditions:

1. Slow down before entering slippery areas.
2. Be alert, watch the path ahead and avoid quick turns, which can cause skids.
3. Correct a skid by turning the steering wheel in the direction of the skid. *Never apply the brakes during a skid.*

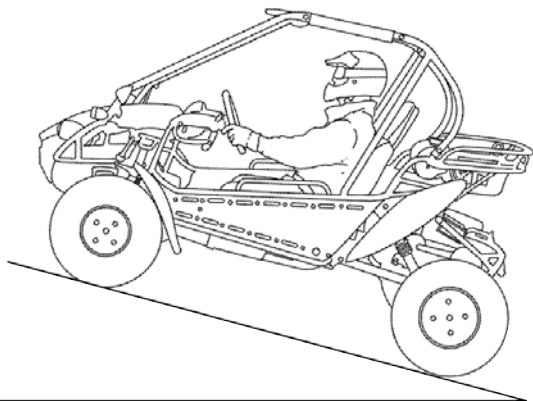


OPERATION

DRIVING UPHILL

Whenever traveling uphill, follow these precautions:

1. Always check the terrain carefully before ascending a hill. Never drive on hills with excessively slippery or loose surfaces.
2. Avoid excessively steep hills (**15° maximum**).



3. Drive straight uphill.
4. Drive at a steady rate of speed. Never press the throttle suddenly.
5. Avoid unnecessary changes in speed or direction.
6. Never go over the crest of a hill at a high speed. An obstacle, a sharp drop, or another vehicle or person could be on the other side of the hill.
7. If the vehicle stalls while climbing a hill, apply the brakes. Place the transmission in reverse and slowly allow the vehicle to roll straight downhill while applying the brakes lightly to control speed.

DRIVING ON A SIDEHILL (SIDEHILLING)

Driving on a sidehill is not recommended. Driving on a sidehill improperly cause loss of control or rollover.

If crossing a hill is *unavoidable*, follow these precautions:

1. Drive slowly and use extreme caution.
2. If the vehicle begins to roll over, or if it feels as if it may roll over, *immediately* turn downhill.

3. Avoid obstacles and changes in terrain that may lower or raise one side of the vehicle or cause the vehicle to slide.
4. If the vehicle begins to slide downhill, immediately turn downhill to stop the slide, or stop the vehicle and maneuver slowly and carefully until the vehicle can be driven straight downhill.

DRIVING DOWNHILL

Whenever driving down a hill, follow these precautions:

1. Avoid excessively steep hills (**15° maximum**).
2. Slow down. Never travel down a hill at high speed.
3. Always check the terrain carefully before driving down a hill. Never drive on hills with excessively slippery or loose surfaces.
4. Always drive down a hill with the transmission in forward gear. *Never “coast” or drive down a hill with the transmission in neutral.*
5. Avoid driving down a hill at an angle, which would cause the vehicle to lean sharply to one side. Always drive straight downhill.
6. Apply the brakes *lightly* to keep speed slow.

DRIVING WITH A PASSENGER

1. Complete the steps detailed in the New Operator Driving Procedures section.
2. Perform the steps outlined in the Pre-Ride Inspection section.
3. Do not carry a passenger until you have at least four hours of driving experience with this vehicle.
4. Make sure the passenger is at least 10 years of age. All riders must be able to sit with backs against the seat, both feet flat on the floor and both hands on the steering wheel (if driving) or on a passenger hand hold.
5. Make sure the passenger has at least 2 inches (5 cm) of clearance between his helmet and the brush bars.
6. Never carry more than one passenger in this vehicle.
7. Never allow a passenger to ride on the back of the vehicle. Allow a passenger to ride only in the passenger seat.
8. Make sure the passenger is wearing helmet, eye protection, gloves, long-sleeve shirt, long pants and over-the-ankle boots.
9. Make sure the passenger secures the seat belt.
10. Tell your passenger to always keep hands and feet inside the vehicle at all times.

OPERATION

11. Drive slowly. Vehicle handling may change with a passenger on board. Always travel at a speed appropriate for your skills, your passenger's skills, and operating conditions. Avoid unexpected or aggressive maneuvers that could cause discomfort or injury to a passenger.
12. Always follow all operating guidelines as outlined on safety labels and in this manual.

DRIVING THROUGH WATER

Your vehicle can drive through shallow water. Make sure the water is no deeper than the floor of the vehicle. Follow these precautions when driving through water:

1. Check water depth. Never drive through water that is deeper than the floor level.
2. After driving through water, test the brakes. Apply them lightly several times while driving slowly. The friction will help dry out the pads.

NOTICE

Major engine damage can result if the vehicle is not thoroughly inspected after operation in water. Perform the services outlined in the Periodic Maintenance Chart section. Give special attention to engine oil, transmission oil and all grease fittings.

If your vehicle becomes immersed or is operated in water that exceeds the floor level, service is required before starting the engine. Your HAMMERHEAD dealer can provide this service. If it's impossible to bring the vehicle in before starting the engine, perform the service outlined in the Vehicle Immersion section, and take the vehicle in for service at the first opportunity.

DRIVING IN REVERSE

Follow these precautions when driving in reverse:

1. Always check for obstacles or people behind the vehicle.
2. Apply the throttle *lightly*. Never apply the throttle suddenly.
3. Back slowly.
4. Apply the brakes lightly for stopping.
5. Avoid making sharp turns.

PARKING ON AN INCLINE

A rolling vehicle can result in serious injury. Avoid parking on an incline. If parking on an incline is unavoidable, follow these precautions:

1. Place the transmission in neutral.
2. Apply the brakes.
3. Keeping the brakes applied, stop the engine.
4. Engage the interlock brake.
5. Always block the rear wheels on the downhill side.

DRIVING OVER OBSTACLES

Follow these precautions when driving over obstacles:

1. Always check for obstacles before driving in a new area.
2. Look ahead and watch the terrain. Always be alert for hazards such as logs, rocks and low hanging branches.
3. Drive slowly and use extra caution when driving on unfamiliar terrain. Obstacles are not always clearly visible.
4. Do not drive over large obstacles such as large rocks and fallen trees. If it's unavoidable, use extreme caution and drive slowly.
5. Always have a passenger dismount and move away from the vehicle before driving over an obstacle that could cause a rollover.

EMISSION CONTROL SYSTEMS

NOISE EMISSION CONTROL SYSTEM

Do not modify the engine, intake or exhaust components, as doing so may affect compliance with U.S.A. EPA noise control requirements (40 CFR 205) and local noise level requirements.

OPERATION ON PUBLIC LANDS IN THE U.S.A.

Your vehicle has a spark arrester that was tested and qualified to be in accordance with the USFS standard 5100-1a. Federal law requires that this spark arrester be installed and functional when the vehicle is operated on public lands.

Operation of off-road vehicles on public lands in the U.S.A. is regulated by 43 CFR 420. Violations are subject to monetary penalties. Federal regulations can be viewed online at <https://ecfr.federalregister.gov/current/title-43/subtitle-B/chapter-I/part-420>.

CRANKCASE EMISSION CONTROL SYSTEM

This engine is equipped with a closed crankcase system. Blow-by gases are forced back to the combustion chamber by the intake system. All exhaust gases exit through the exhaust system.

ELECTROMAGNETIC INTERFERENCE

This spark ignition system complies with Canadian ICES-002.

This vehicle complies with the EMC requirements of UN ECE Regulation 10.

Non-ionizing Radiation: This vehicle emits some electromagnetic energy. People with active or non-active implantable medical devices (such as heart monitoring or controlling devices) should review the limitations of their device and the applicable electromagnetic standards and directives that apply to this vehicle.

MAINTENANCE

PERIODIC MAINTENANCE CHART

Any qualified repair shop or person may maintain, replace or repair the emission control devices or systems on your vehicle. An authorized HAMMERHEAD dealer can perform any service that may be necessary for your vehicle. HAMMERHEAD also recommends HAMMERHEAD parts for emissions-related service, however equivalent parts can be used.

It is a potential violation of the Clean Air Act if a part supplied by an aftermarket parts manufacturer reduces the effectiveness of the vehicle's emission controls. Tampering with emission controls is prohibited by federal law.

Owners are responsible for performing the scheduled maintenance identified in this owner's manual.

Careful periodic maintenance will help keep your vehicle in the safest, most reliable condition. Inspection, adjustment and lubrication of important components are explained in the periodic maintenance chart.

Inspect, clean, lubricate, adjust and replace parts as necessary. When inspection reveals the need for replacement parts, genuine HAMMERHEAD parts are available from your HAMMERHEAD dealer. Equivalent parts may be used for emissions-related service.

Record maintenance and service in the Maintenance Log section.

Service and adjustments are important for proper vehicle operation. If you're not familiar with safe service and adjustment procedures, a qualified dealer can perform these operations.

Vehicles subjected to heavy or severe use patterns must be inspected and serviced more frequently.

SEVERE USE DEFINITION

- Frequent immersion in mud, water or sand
- Frequent or prolonged operation in dusty environments
- Short trip cold weather operation
- Racing or race-style high RPM use
- Prolonged low speed, heavy load operation
- Extended idle

Pay special attention to the oil level. A rise in oil level during cold weather can indicate contaminants collecting in the oil sump or crankcase. Change oil immediately if the oil level begins to rise. Monitor the oil level, and if it continues to rise, discontinue use and determine the cause. Your dealer can assist.

MAINTENANCE

MAINTENANCE CHART KEY

SYMBOL	DESCRIPTION
XU	Perform these procedures more often for vehicles subjected to severe use.
D	Have an authorized dealer or other qualified person perform these services.

WARNING

Improperly performing the procedures marked with a **D** could result in component failure and lead to serious injury or death. Have an authorized dealer or other qualified person perform these services.

Perform all services at whichever maintenance interval is reached first. Record maintenance and service in the Maintenance Log.

ITEM		MAINTENANCE INTERVAL (WHICHEVER COMES FIRST)			REMARKS
		HRS	CLNDR	MILES (KM)	
	Steering	-	Daily	-	Check each day before driving the vehicle. Make adjustments as needed. See the Pre-Ride Checklist.
	Front suspension	-		-	
	Rear suspension	-		-	
	Tires	-		-	
	Brake fluid level	-		-	
	Brake pedal travel	-		-	
	Brake system	-		-	
	Wheels/fasteners	-		-	
	Frame fasteners	-		-	
	Engine oil level	-		-	
	Fuel Tank		Daily		Add Carbon Clean with each fuel fill
XU	Air filter	-	Daily	-	Inspect; clean often; replace as needed
	Airbox Sediment Tube		Daily		Drain when deposits are visible
	Daytime running lights/taillight	-	Daily	-	Check operation

MAINTENANCE

ITEM		MAINTENANCE INTERVAL (WHICHEVER COMES FIRST)			REMARKS
		HRS	CLNDR	MILES (KM)	
	Drive chain	-	Daily	-	Inspect; adjust, lubricate, replace as needed
	CVT housing (if equipped)	-	Weekly	-	Drain water as needed, check often if driving in wet conditions
XU D	Brake pad wear	10	Monthly	100 (160)	Inspect periodically
D	Choke (if equipped)	10	Monthly	100 (160)	Check for proper operation; your dealer can assist
	Idle Speed	10	Monthly	100 (160)	Check, adjust as needed
	Valve Clearance (Initial)	10	Monthly	100 (160)	Valve lash adjustment: Every 40 hours after first 10 hour adjustment
XU	Engine oil change (break-in)	5	Monthly	-	Perform a Break-in Oil Change at one month
	Drive chain (break-in)	5	Monthly	-	Adjust and lubricate
	Fuel System	25	Monthly	-	Inspect; check lines and fittings for leaks and abrasion
	Battery	25	Monthly	250 (400)	Check terminals; clean; test
XU	Main gearcase oil	25	Monthly	250 (400)	Inspect level; change yearly
XU	Engine breather filter (if equipped)	25	1 M	150 (250)	Inspect; replace if necessary
XU	Engine oil change	30	6 M	300 (480)	Change Oil; Use 10w40 (SN) Conventional Engine Oil
XU	General lubrication	50	3 M	500 (800)	Lubricate all fittings, pivots, cables, etc.
	Shift Linkage	50	6 M	500 (800)	Inspect, lubricate, adjust
D	Steering	50	6 M	500 (800)	Lubricate
XU	Front Suspension	50	6 M	500 (800)	Lubricate
XU	Rear Suspension	50	6 M	500 (800)	Lubricate
D	Choke Cable	50	6 M	500 (800)	Inspect; adjust; lubricate; replace if necessary. Your dealer can assist.

MAINTENANCE

ITEM		MAINTENANCE INTERVAL (WHICHEVER COMES FIRST)			REMARKS
		HRS	CLNDR	MILES (KM)	
	Carburetor Float Bowl	50	6 M	500 (800)	Drain bowl periodically, and prior to storage.
	Carburetor Intake Ducts	50	6 M	500 (800)	Inspect duct for proper sealing/air leaks
D	Valve Clearance	50	-	500 (800)	Adjust valve lash every 40 hours after first 10 hours
D	Fuel system/filter	100	12 M	600 (1000)	Inspect; Clean/Replace if necessary. Check for leaks at tank cap, filter, and carburetor.
XU	Spark plug	100	12M	600 (1000)	Check, Replace as necessary, torque to specification
XU	Engine mounts	100	12 M	1000 (1600)	Inspect
	Exhaust muffler/pipe	100	12 M	1000 (1600)	Inspect
D	Ignition timing	100	12 M	1000 (1600)	Inspect
XU	Wiring	100	12 M	1000 (1600)	Inspect for wear, routing, security; apply dielectric grease to connectors subjected to water, mud, etc.
D	Clutches (drive and driven)	100	12 M	1000 (1600)	Inspect; clean; replace worn parts
	Drive belt	100	12 M	1000 (1600)	Inspect; replace as needed
D	Front wheel bearings	100	12 M	1000 (1600)	Inspect; replace as needed
D	Brake fluid	200	24 M	2000 (3200)	Change every two years
	Spark arrestor	300	36 M	3000 (4800)	Clean out
D	Toe adjustment		-		Inspect periodically; adjust when parts are replaced

LUBRICATION RECOMMENDATIONS

Check and lubricate all components at the intervals outlined in the Periodic Maintenance Chart, or more often under severe use, such as wet or dusty conditions. Items not listed in the chart should be lubricated at the general lubrication interval.

	ITEM	LUBE	REFERENCE
	Engine Oil	10w30 Conventional Engine Oil	page 50
	Brake Fluid	DOT 4 Brake Fluid	page 63
	Transmission Oil (Main Gearcase)	AGL Gearcase Lubricant & Transmission Fluid	page 53
	Drive Chain	Chain Lube or SAE 80/90	page 54
	A-Arm Pivots	All Season Grease or grease conforming to NLGI No. 2	Grease at general lubrication interval, also after washing vehicle or driving in water.
XU	Steering Arm Pivots		

XU - Perform these procedures more often for vehicles subjected to severe use.

MAINTENANCE

ENGINE OIL

OIL RECOMMENDATIONS

Always check and change the engine oil at the intervals outlined in the Periodic Maintenance Chart section. HAMMERHEAD recommends the use of 10w30 Conventional Engine Oil for this vehicle.

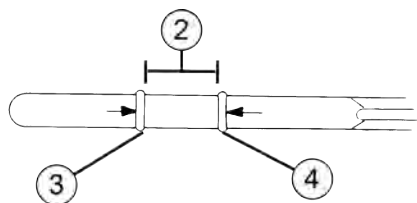
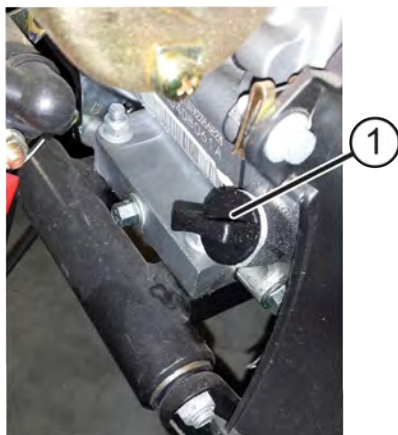
NOTICE

Mixing brands or using a non-recommended oil may cause serious engine damage. Always use the recommended oil. Never substitute or mix oil brands.

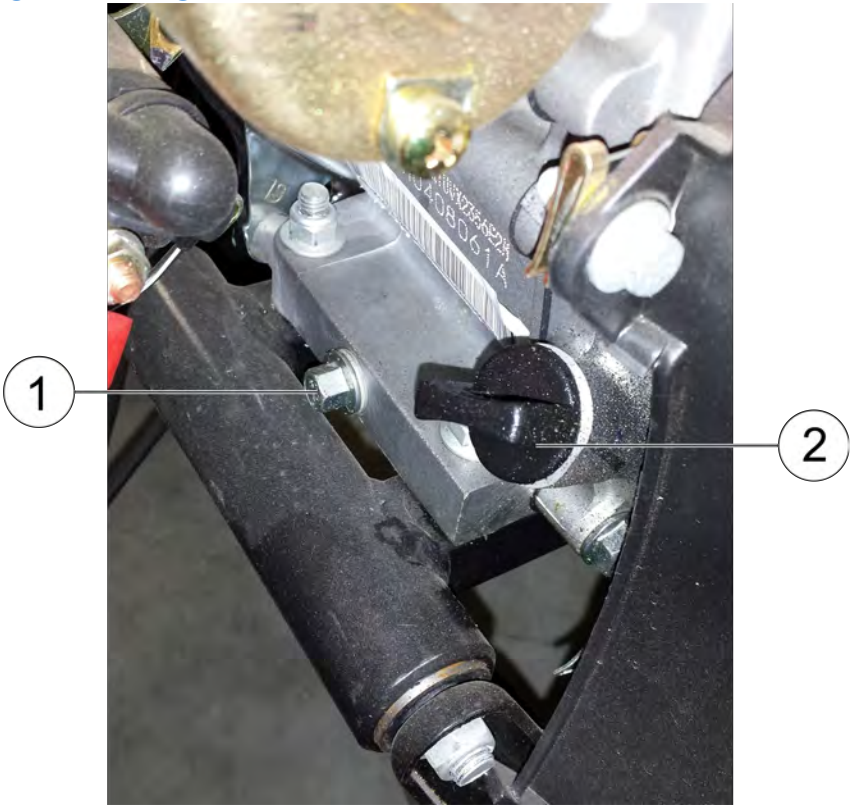
OIL CHECK

Check the engine oil level with the engine stopped and with the engine in a level position.

1. Remove either side mounted filler cap dipstick or high oil fill dipstick and wipe it clean.
2. Insert the dipstick into the filler neck and turn clockwise until fully seated. Then remove the dipstick by turning it counter-clockwise. Check the oil level shown on the dipstick.
3. If the oil level is low, fill to the marks on the dipstick with the recommended oil.
4. Securely screw in the filler cap/dipstick. Running the engine with a low oil level can cause engine damage. Always check the engine oil before start up.



- ① Dipstick
- ② Safe Range
- ③ Add Oil
- ④ Full

OIL CHANGE**NOTICE**

Running the engine with a low oil level can cause engine damage.

FLUID CAPACITY

Oil Capacity for 208cc engine = 16 oz (.473 liter)

Drain the used oil while the engine is warm. Warm oil drains quickly and completely. Avoid contact with hot oil.

1. Place a suitable container below the engine that will catch the oil as it drains.
2. Remove the filler cap/dipstick ② and the drain plug ①.

MAINTENANCE

3. Allow the used oil to drain completely, then reinstall the drain plug, and tighten it securely. Do not over tighten. Dispose of used motor oil in a manner that is compatible with the environment. We suggest you take used oil in a sealed container to your local recycling center or service station for reclamation. Do not throw used oil in the trash, pour it on the ground, or pour down a drain.
4. With the engine in a level position, fill to the marks on the dipstick with the recommended oil.
5. Securely screw in the filler cap/dipstick.

TIP

If you are having trouble removing the drain bolt, loosen the 4 bolts that hold the engine to the frame so that it lifts the engine up approximately 0.25 in (6.35 mm).

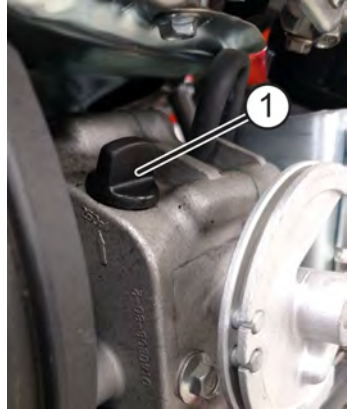
TRANSMISSION (MAIN GEARCASE)

Always check and change the fluid at the intervals outlined in the Periodic Maintenance Chart section. HAMMERHEAD recommends the use of AGL Gearcase Lubricant & Transmission Fluid for this vehicle.

FLUID CHECK

The fill plug^① is located on the rear of the gearcase. Maintain the fluid level at the bottom of the fill plug hole.

1. Position the vehicle on a level surface.
2. Remove the fill plug.
3. Check the fluid level.
4. Add the recommended fluid as needed.
5. Reinstall the fill plug.



FLUID CHANGE

The drain plug is located on the right hand side of the transmission.

1. Remove the fill plug.
2. Place a drain pan under the drain plug.
3. Remove the drain plug. Allow the fluid to drain completely.
4. Clean the drain plug.
5. Reinstall the drain plug with a new o-ring. Torque to 14 ft. lbs. (19 Nm).
6. Refill with 250 ml / 8.5 oz of recommended gear oil. Do not overfill.
7. Reinstall the fill plug.
8. Check for leaks.
9. Discard used fluid properly.



DRIVE CHAIN LUBRICATION

Lubricate the drive chain with chain spray lube or an approved chain lube at the general lubrication interval specified in the Periodic Maintenance Chart section. Lubricate more often under severe use, such as in dirty or wet conditions.

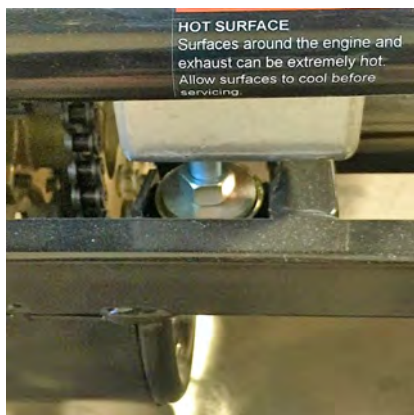
NOTICE

Washing the drive chain with a high pressure washer or gasoline can cause premature wear and drive chain failure. Don't use a high pressure washer or gasoline to clean the drive chain.

Adjusting or operating the vehicle with improper rear drive chain slack can result in severe damage to the transmission and drive components. Always make sure the slack is within the stated specifications.

DRIVE CHAIN SLACK ADJUSTMENT

1. Loosen upper nut.
2. Turn lower nut clockwise in 1/2 turn increments, then turn upper nut until tight. Follow this procedure until chain is at proper tension. Chain should have 1/4" (6 mm) to 1/2" (13 mm) deflection.
3. Repeat the above steps until chain is adjusted to desired fit.



HOT SURFACE
Surfaces around the engine and exhaust can be extremely hot. Allow surfaces to cool before servicing.

208R Chain Adjustment Shaft



208 Chain Adjustment Shaft

SPARK PLUG

SPARK PLUG GAP / TORQUE

NOTE

Electrode Gap
.027 - .030 inches (0.7 - 0.8 mm)

CAUTION

A hot exhaust system and engine can cause burns. Wear protective gloves when removing a spark plug for inspection.

NOTICE

Using non-recommended spark plugs can result in serious engine damage. Use HAMMERHEAD-recommended spark plugs or their equivalent.

Spark plug condition is indicative of engine operation. The spark plug firing end condition should be read after the engine is warmed up and the vehicle is driven at higher speeds. Immediately check the spark plug for correct color.

SPARK PLUG CONDITION

NORMAL SPARK PLUG

The normal insulator tip is gray, tan or light brown. There will be few combustion deposits. The electrodes are not burned or eroded. This indicates the proper type and heat range for the engine and the service.

TIP

The tip should not be white. A white insulator tip indicates overheating, caused by use of an improper spark plug or incorrect throttle body adjustments.

WET FOULED SPARK PLUG

The wet fouled insulator tip is black. A damp oil film covers the firing end. There may be a carbon layer over the entire nose. Generally, the electrodes are not worn. General causes of fouling are excessive oil, use of non-recommended oil or incorrect throttle body adjustments.

MAINTENANCE

SPARK PLUG REMOVAL AND REPLACEMENT

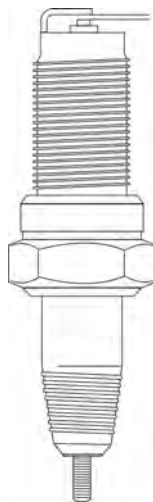
NOTICE

Using an incorrect spark plug may cause engine damage.

NOTICE

A loose spark plug can overheat and damage the engine. Over-tightening the spark plug can damage the threads in the cylinder head.

1. Use a spark plug wrench to remove the spark plug.
2. Inspect the spark plug each time you change the oil. The electrodes should be kept clean and free of carbon. The presence of carbon or excess oil will reduce proper engine performance. If possible, check the spark plug gap (area between electrodes) using a wire feeler gauge.
3. Install the spark plug carefully to avoid cross threading. Screw in spark plug by hand until it stops turning.
4. Tighten the spark plug with a 13/16-inch (20.6 mm) spark plug wrench. Tighten 1/4 turn after the spark plug seats.



NOTE

It is advisable to replace the spark plug at least once a year to insure easy starting and good engine performance.

VALVE ADJUSTMENT PROCEDURE

NOTE

In order to properly set the valves, the engine must be at TDC on the compression stroke. To find TDC on the compression stroke, roll the engine over until the intake valve closes and stops at TDC.

INTAKE VALVE CLEARANCE ADJUSTMENT

1. Remove the valve cover and secondary air pipe assembly.
2. Verify cam lobes are pointed down.
3. Insert correct thickness feeler gauge between end of intake valve stem and adjuster screw.
4. When clearance is correct, hold adjuster screw and tighten locknut securely.
5. Re-check the valve clearance.
6. Repeat adjustment procedure if necessary until clearance is correct with locknut secured.

MEASUREMENT
Valve Clearance 0.004" (0.10 mm)

EXHAUST VALVE CLEARANCE ADJUSTMENT

1. Remove the valve cover and secondary air pipe assembly.
2. Verify cam lobes are pointed down.
3. Insert correct thickness feeler gauge between end of exhaust valve stem and adjuster screw.
4. Loosen locknut and turn adjuster screw until there is a slight drag on feeler gauge.
5. When clearance is correct, hold adjuster screw and tighten locknut securely.
6. Re-check the valve clearance.
7. Repeat adjustment procedure if necessary until clearance is correct with locknut secured.

MEASUREMENT
Valve Clearance 0.0047" (0.12 mm)

CONSTANT VARIABLE TRANSMISSION (CVT) SYSTEM

WARNING

Failure to comply with the instructions in this warning can result in severe injury or death.

Do not modify any component of the CVT system. Doing so may reduce its strength so that a failure may occur at a high speed. The CVT system has been precision balanced. Any modification will cause the system to be out of balance, creating vibration and additional loads on components.

The CVT system rotates at high speeds, creating large amounts of force on clutch components. Extensive engineering and testing has been conducted to ensure the safety of this product. However, as the owner, you have the following responsibilities to make sure this system remains safe:

- Always follow all recommended maintenance procedures. See your HAMMERHEAD dealer, or other qualified person, for service and repair assistance.
- This CVT system is intended for use on HAMMERHEAD products only. Do not install it in any other product.
- Always make sure the CVT housing is securely in place during operation.

CVT DRYING

There may be some instances when water is accidentally ingested into the CVT system. Use the following instructions to dry it out before operating.

NOTICE

Exposure to salt water will cause corrosion to metal components. If your vehicle is operated in salt water areas, rinse it off frequently with fresh water.

1. Shift the transmission to neutral. Set the parking brake.
2. Start the engine. Apply varying throttle for 10-15 seconds to expel the moisture and air-dry the belt and clutches. Do not hold the throttle wide open for more than 10 seconds.
3. Allow the engine RPM to settle to idle speed.
4. Test for belt slippage. If the belt slips, repeat the process.
5. Your vehicle requires service as soon as possible. A HAMMERHEAD dealer, or other qualified person, can assist.

AIR FILTER

Always change the air filter at the intervals outlined in the Periodic Maintenance Chart section. This unit is equipped with a foam-style air filter and should be replaced after every **20 hours** of operation.

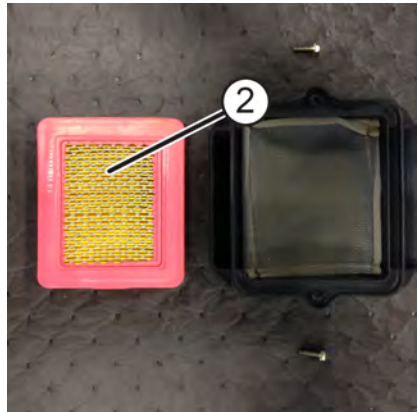
NOTE

Operating in usually dusty conditions may require more frequent replacement.

NOTICE

Never operate the vehicle with the filter element removed. Dirt will enter the engine, causing rapid wear and severe damage to the engine.

1. Remove air cleaner and cover① by releasing the tab.
2. Clean any excess dirt, oil, or dust from the air cleaner box with a mild detergent and water solution.
3. Thoroughly dry the air box.
4. Replace the air cleaner element②.
5. Replace the cleaner cover.



SPARK ARRESTOR

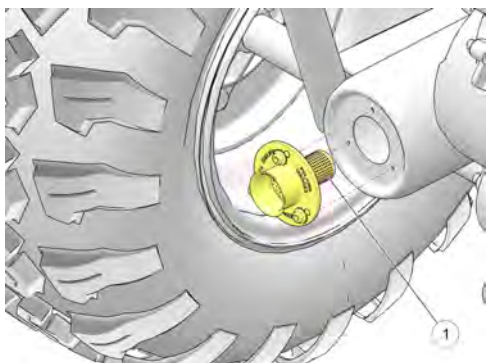
WARNING

Failure to heed the following warnings while servicing the spark arrestor could result in serious injury or death.

- Do not perform service on the spark arrestor while the system is hot. Allow components to cool sufficiently before proceeding.
- Wear eye protection and gloves.
- Never operate without the spark arrestor.
- Never run the engine in an enclosed area. Exhaust contains poisonous carbon monoxide gas.

To remove accumulated carbon, clean the spark arrestor at the intervals recommended in the Periodic Maintenance Chart section.

1. Remove the six bolts and remove the arrestor from the end of the muffler.
2. Use a non-synthetic brush to clean the arrestor screen. A synthetic brush may melt if components are warm. If necessary, blow debris from the screen with compressed air.
3. Inspect the screen for wear and damage. Replace the arrestor if damage is found.
4. Reinstall the arrestor.
5. Torque the bolts to 7 ft. lbs. (9.5 Nm).



① Arrestor Screen

THROTTLE SYSTEM

WARNING

Failure to check or maintain proper operation of the throttle system can result in an accident and lead to serious injury or death if the throttle pedal sticks during operation.

Never start or operate this vehicle if it has a sticking or improperly operating throttle pedal. Immediately contact your HAMMERHEAD dealer or other qualified person for service if throttle problems arise. Always check the pedal for free movement and return before starting the engine and occasionally during operation.

THROTTLE FREEPLAY

If the throttle pedal has excessive play due to cable stretch or misalignment, it will cause a delay in throttle response, especially at low engine speed. The throttle may also not open fully. If the throttle pedal has no freeplay, the throttle may be hard to control, and the idle speed may be erratic.

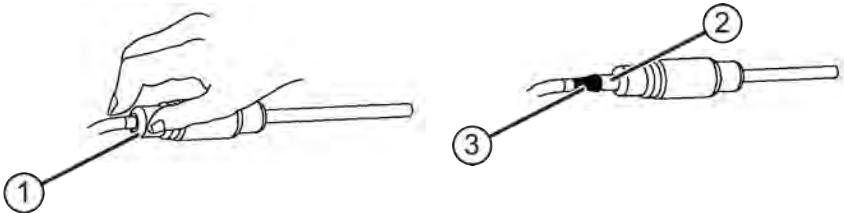
Check the throttle pedal freeplay at the intervals outlined in the Periodic Maintenance Chart section. Adjust the freeplay if necessary.

THROTTLE FREEPLAY INSPECTION

1. Place the transmission in neutral. Set the parking brake.
2. Start the engine. Allow it to warm up thoroughly.
3. Measure the distance the throttle pedal moves before the engine begins to pick up speed.

THROTTLE FREEPLAY ADJUSTMENT

Access the throttle cable adjuster through the right front wheel well.



1. Slide the cable adjuster boot off the cable adjuster.
2. Squeeze the end of the rubber boot (1) and slide it far enough to expose the end of the in-line cable adjuster (2).
3. Loosen the adjuster lock nut (3).

MAINTENANCE

4. Move the cable adjuster until desired freeplay is achieved at the throttle pedal. While adjusting, lightly flip the throttle pedal up and down.
5. Tighten the lock nut.
6. Apply a small amount of grease to the inside of the boot and slide it over the cable adjuster to its original position.

BRAKES

The front and rear brakes are hydraulic disc type brakes activated by the brake pedal.

Always check brake pedal travel and the brake fluid reservoir level before each use of the vehicle. When applied, the brake pedal should feel firm. Any sponginess would indicate a possible fluid leak or low brake fluid level, which must be corrected before riding.

If you discover any irregularities in brake system operation, including excessive pedal travel, contact your dealer for proper diagnosis and repairs.

WARNING

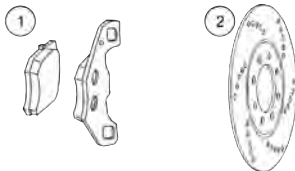
Operating the vehicle with a spongy brake pedal can result in loss of braking, which could cause an accident resulting in severe injury or death. Never operate the vehicle with a spongy-feeling brake pedal.

BRAKE INSPECTION

1. Check the brake system for fluid leaks.
2. Check the brake pedal for excessive travel or a spongy feel.
3. Check the brake pads for wear, damage and looseness.
4. Inspect the brake pad wear surface for excessive wear.
5. Change pads when the friction material is worn to 0.04" (1 mm).
6. Check the surface condition of the brake discs. Measure the thickness of the rear disc. Replace a disc if the thickness is less than 1" (2.5 mm).
7. Check brake system hoses and fittings for cracks, deterioration, abrasion and leaks. Tighten any loose fittings and replace any worn or damaged parts.

① Brake Pad

② Rear Disc



BRAKE FLUID

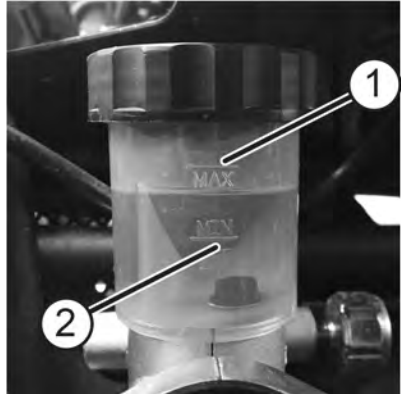
Inspect the level of the brake fluid before each operation. If the fluid level is low add DOT 4 brake fluid only.

WARNING

After opening a bottle of brake fluid, always discard any unused portion. Never store or use a partial bottle. Brake fluid is hygroscopic, meaning it rapidly absorbs moisture from the air. The moisture causes the boiling temperature of the brake fluid to drop, which can lead to early brake fade and the possibility of accident or severe injury.

Change the brake fluid every two years and any time the fluid becomes contaminated, the fluid level is below the minimum, or if the type and brand of the fluid in the reservoir are unknown. Access the brake fluid reservoir through the front of the vehicle, near the left headlamp.

1. Position the vehicle on a level surface.
2. Place the transmission in neutral. Set the parking brake.
3. View the brake fluid level in the reservoir. The level should be between the maximum and minimum level lines. Add brake fluid as needed.
4. Apply the brake forcefully for a few seconds and check for fluid leakage around the fittings.



STEERING WHEEL INSPECTION

Check the steering wheel for specified freeplay and smooth operation at the intervals outlined in the Periodic Maintenance Chart section.

1. Position the vehicle on level ground.
2. Lightly turn the steering wheel left and right.
3. If there is excessive freeplay or strange noises, or the steering feels rough or “catchy,” have the steering system inspected by an authorized HAMMERHEAD dealer or other qualified service facility before operating the vehicle.

MAINTENANCE

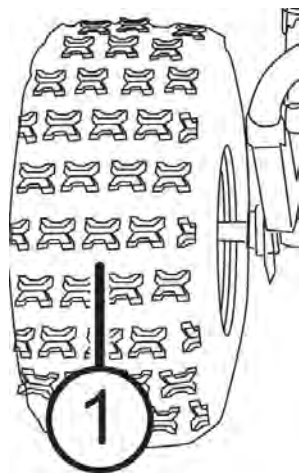
TOE ALIGNMENT

Use the following procedure to check the toe alignment of the vehicle. The recommended toe alignment is 1/8" to 1/4" (3-6 mm) toe out.

WARNING

Severe injury or death can result from improper toe alignment and adjustment. Do not attempt to adjust tie rod alignment. All tie rod adjustments should be performed by an authorized HAMMERHEAD dealer or other qualified service facility.

1. Position the vehicle on a level surface.
2. Set the steering wheel in a straight-ahead position and secure them in this position.
3. Place a chalk mark on the center line^① of the front tires as close to the hub/axle center line as possible. Make sure both marks are the same distance from the floor.
4. Measure the distance between the marks and record the measurement.
5. Move the vehicle to rotate the tires 180°. Position the wheels with the chalk marks at the rear of the tires, even with the hub/axle center line.
6. Measure the distance between the marks and record the measurement.
7. Subtract the second measurement from the first measurement. The difference is the vehicle toe-out alignment.
8. If you discover improper alignment, your HAMMERHEAD dealer or other qualified person can assist.



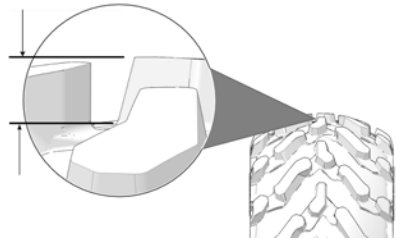
TIRES

WARNING

Operating your vehicle with worn tires will increase the possibility of skidding, loss of control and an accident, which could result in serious injury or death. Always replace tires when the tread depth measures $1/8$ " (3 mm) or less. Improper tire inflation or the use of non-standard size or type of tires may adversely affect vehicle handling, which could result in vehicle damage or personal injury. Always maintain proper tire pressure. Always use HAMMERHEAD-approved size and type of tires for this vehicle when replacing tires.

TIRE TREAD DEPTH

Always replace tires when tread depth is worn to 3 mm ($1/8$ ") or less.

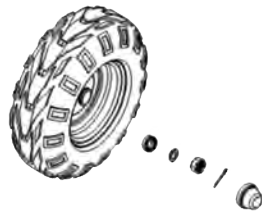


FRONT WHEEL HUB TIGHTENING

Front wheel bearing tightness and spindle nut retention are critical component operations. All service must be performed by your authorized dealer or other qualified service facility.

FRONT WHEEL REPLACEMENT

1. Position the vehicle on a level surface.
2. Place the transmission in neutral. Engage the interlock brake. Stop the engine.
3. Loosen the castle nut slightly.
4. Elevate the side of the vehicle by placing a suitable stand under the frame.
5. Remove the castle nut.
6. Remove the wheel.
7. Reverse steps to install.



MAINTENANCE

REAR WHEEL REPLACEMENT

WARNING

Improperly installed wheels can adversely affect tire wear and vehicle handling, which can result in serious injury or death. Always ensure that all nuts are torqued to specification. Do not service axle nuts that have a cotter pin installed. A HAMMERHEAD dealer or other qualified person can assist.

1. Position the vehicle on a level surface.
2. Place the transmission in neutral. Engage the interlock brake. Stop the engine.
3. Remove the cotter pin and then 16 mm nut.
4. Slide off wheel and hub assembly. It is only necessary to remove one castle nut to remove the wheel by itself.



WHEEL NUT TORQUE SPECIFICATIONS

Check the wheel nut torques occasionally and when they've been loosened for service.

LOCATION	NUT TORQUE
Front Wheel	36 ± 10 ft. lbs. (50 ± 10 Nm)
Rear Wheel	36 ± 10 ft. lbs. (50 ± 10 Nm)

LIGHTS

HEADLAMP REPLACEMENT

If a headlight becomes damaged or inoperable, the entire headlight assembly must be replaced. An authorized dealer can assist.

VEHICLE IMMERSION

NOTICE

If your vehicle becomes immersed, major engine damage can result if the machine is not thoroughly inspected. Take the vehicle in for service before starting the engine. Your HAMMERHEAD dealer or authorized person can assist.

If it's impossible to take your vehicle to a dealer before starting it, follow the steps outlined below

1. Move the vehicle to dry land.
2. Check the air box. If water is present, dry the air box and replace the filter with a new filter. Thoroughly dry the air pre-filter. See the Air Filter section for details.
3. Remove the air box drain plug to drain any water. Reinstall the drain plug securely.
4. Remove the spark plug.
5. Loosen carburetor drain screw.
6. Turn the engine over several times using the electric start.
7. Re-tighten the carburetor drain screw.
8. Dry the spark plug and reinstall it, or install a new plug.
9. Attempt to start the engine. If necessary, repeat the drying procedure.
10. Take the vehicle in for service as soon as possible, whether you succeed in starting it or not. Your HAMMERHEAD dealer can provide the required service.
11. If water has been ingested into the transmission follow the procedure in the CVT Drying section.

BATTERY

 **WARNING**

Improperly connecting or disconnecting battery cables can result in an explosion and cause serious injury or death. When removing the battery, always disconnect the negative (black) cable first. When reinstalling the battery, always connect the negative (black) cable last.

 **WARNING**

Battery electrolyte is poisonous. It contains sulfuric acid. Serious burns can result from contact with skin, eyes or clothing.

Antidote:

External: Flush with water.

Internal: Drink large quantities of water or milk. Follow with milk of magnesia, beaten egg, or vegetable oil. Call physician immediately.

Eyes: Flush with water for 15 minutes and get prompt medical attention.

Batteries produce explosive gases. Keep sparks, flame, cigarettes, etc. away. Ventilate when charging or using in an enclosed space. Always shield eyes when working near batteries. **KEEP OUT OF REACH OF CHILDREN.**

Your vehicle may have either a sealed battery, which requires little maintenance, or a conventional battery. A sealed battery can be identified by its flat covers on the top of the battery. A conventional battery has six filler caps on the top of the battery.

Always keep battery terminals and connections free of corrosion. If cleaning is necessary, remove corrosion with a stiff wire brush. Wash with a solution of one tablespoon baking soda and one cup water. Rinse well with tap water and dry off with clean shop towels. Coat the terminals with dielectric grease or petroleum jelly. Be careful not to allow cleaning solution or tap water into a conventional battery.

BATTERY REMOVAL

NOTICE

If electrolyte spills, immediately wash it off with a solution of one tablespoon baking soda and one cup water to prevent damage to the vehicle.

1. The battery can be accessed from the rear of the vehicle, behind the driver's seat. Remove strap and battery cover.
2. On conventional batteries, remove the battery vent tube (sealed batteries do not have a vent tube).
3. Disconnect the negative battery cable (green) first.
4. Disconnect the positive (red) battery cable last.
5. Lift the battery out of the vehicle. Be careful not to tip a conventional battery sideways, which could spill electrolyte.



BATTERY INSTALLATION

Using a new battery that has not been fully charged can damage the battery and result in a shorter life. It can also hinder vehicle performance. Follow the instructions detailed in the Battery Charging section before installing the battery.

1. Ensure that the battery is fully charged.
2. Place the battery in the battery holder.
3. Coat the terminals with dielectric grease or petroleum jelly.
4. Connect and tighten the red (positive) cable first.
5. Connect and tighten the black (negative) cable last.
6. Verify that cables are properly routed.
7. Put battery cover back on, and reattach strap.

BATTERY CHARGING

The following battery charging instructions apply only to the installation of a sealed battery. Read all instructions before proceeding with the installation of this battery.

MAINTENANCE

The sealed battery is already filled with electrolyte and has been sealed and *fully charged* at the factory. *Never* pry the sealing strip off or add any other fluid to this battery.

The single most important thing about maintaining a sealed battery is to keep it fully charged. Since the battery is sealed and the sealing strip cannot be removed, you must use a voltmeter or multimeter to measure DC voltage.

WARNING

An overheated battery may explode, causing severe injury or death. Always watch charging times carefully. Stop charging if the battery becomes very warm to the touch. Allow it to cool before resuming charging.

For a refresh charge, follow all instructions carefully.

1. Check the battery voltage with a voltmeter or multimeter. A fully charged battery will register 12.8 V or higher.
2. If the voltage is less than 12.8 volts, recharge the battery at 1.2 amps or less until battery voltage is 12.8 or greater.

TIP

When using an automatic charger, refer to the charger manufacturer's instructions for recharging. When using a constant current charger, use the guidelines below for recharging.

Always verify battery condition before and 1-2 hours after the end of charging.

STATE OF CHARGE	VOLTAGE	ACTION	CHARGE TIME*
*(USING CONSTANT CURRENT CHARGER @ STANDARD AMPS SPECIFIED ON TOP OF BATTERY)			
100%	12.8-13.0 volts	None, check at 3 mos. from date of manufacture	None required
75%-100%	12.5-12.8 volts	May need slight charge, if no charge given, check in 3 months	3-6 hours
50%-75%	12.0-12.5 volts	Needs charge	5-11 hours

STATE OF CHARGE	VOLTAGE	ACTION	CHARGE TIME*
*(USING CONSTANT CURRENT CHARGER @ STANDARD AMPS SPECIFIED ON TOP OF BATTERY)			
25%-50%	11.5-12.0 volts	Needs charge	At least 13 hours, verify state of charge
0%-25%	11.5 volts or less	Needs charge with desulfating charger	At least 20 hours

BATTERY STORAGE

Whenever the vehicle is not used for a period of three months or more, remove the battery from the vehicle, ensure that it's fully charged, and store it out of the sun in a cool, dry place. Check battery voltage each month during storage and recharge as needed to maintain a full charge.

TIP

Battery charge can be maintained by using a Battery Tender charger or by charging about once a month to make up for normal self-discharge. Battery Tender can be left connected during the storage period, and will automatically charge the battery if the voltage drops below a pre-determined point.

CLEANING AND STORAGE

WASHING THE VEHICLE

Keeping your HAMMERHEAD vehicle clean will not only improve its appearance but it can also extend the life of various components.

Before washing the vehicle, locate the CVT inlet and outlet ducts. Avoid spraying water directly toward the ducts.

NOTICE

Water in the CVT system could cause the drive belt to become wet and slip in the clutches. Always avoid spraying water directly toward the CVT inlet and outlet ducts.

High water pressure may damage components. HAMMERHEAD recommends washing the vehicle by hand or with a garden hose, using mild soap.

Certain products, including insect repellents and chemicals, will damage plastic surfaces. Do not allow these types of products to contact the vehicle.

The best and safest way to clean your HAMMERHEAD vehicle is with a garden hose and a pail of mild soap and water.

1. Use a professional-type washing cloth, cleaning the upper body first and the lower parts last.
2. Rinse with clean water frequently.
3. Dry surfaces with a chamois to prevent water spots.

Washing Tips

- Avoid the use of harsh cleaners, which can scratch the finish.
- Do not use a power washer to clean the vehicle.
- Do not use medium to heavy duty compounds on the finish.
- Always use clean cloths and pads for cleaning and polishing. Old or reused cloths and pads may contain dirt particles that will scratch the finish.

If a high pressure water system is used for cleaning (not recommended), exercise extreme caution. The water may damage components and could remove paint and labels. Avoid directing the water stream at the following items:

- Wheel bearings
- Radiator
- Transmission seals
- CVT inlet and outlet ducts
- Brakes
- Cab and body panels

- Labels and decals
- Electrical components and wiring

If an informational or graphic label becomes illegible or comes off, contact your HAMMERHEAD dealer to purchase a replacement. Replacement safety labels are provided by HAMMERHEAD at no charge.

Grease all zerk fittings immediately after washing. Allow the engine to run for a while to evaporate any water that may have entered the engine or exhaust system.

POLISHING THE VEHICLE

HAMMERHEAD recommends the use of common household aerosol furniture polish for polishing the finish on your HAMMERHEAD vehicle. Follow the instructions on the container.

Polishing Tips

- Avoid the use of automotive products, some of which can scratch the finish of your vehicle.
- Always use clean cloths and pads for cleaning and polishing. Old or reused cloths and pads may contain dirt particles that will scratch the finish.

CHROME WHEEL CARE (IF EQUIPPED)

Proper maintenance will protect chrome wheels from corrosion, preserve wheel life and ensure a "like new" appearance for many years. Chrome wheels exposed to road salt (or salt in the air in coastal areas) are more susceptible to corrosion if not properly cleaned. Clean chrome wheels more often if they're exposed to salt or other corrosive elements.

1. Wash chrome wheels frequently. Use a mild detergent. Never use abrasive cleaners on plated or painted surfaces.
2. Rinse well with clear water. Soap, detergents, salt, dirt, mud, and other elements can cause corrosion.
3. Polish the clean chrome wheels periodically. Use an automotive grade chrome polish.
4. Routinely and liberally apply a weather resistant wax to each polished chrome wheel. Choose a product suitable for chrome finishes. Read and follow the product labels and instructions.

REMOVING CORROSION

If light rust is found on the chrome finish, use steel wool (#0000-OTT grade) to remove it. Gently rub the affected areas with the steel wool until the corrosion has been removed. Clean and polish the wheel as outlined above.

STORAGE TIPS

NOTICE

Starting the engine during the storage period will disturb the protective film created by fogging and damage could occur. Never start the engine during the storage period.

CLEAN THE EXTERIOR

Make any necessary repairs and clean the vehicle as recommended. See the Washing the Vehicle section for details..

STABILIZE THE FUEL

1. Fill the fuel tank.
2. Add Carbon Clean Fuel Treatment or equivalent fuel treatments or stabilizers. Follow the instructions on the container for the recommended amount. Carbon Clean removes water from fuel systems, stabilizes fuel and removes carbon deposits from pistons, rings, valves and exhaust systems.
3. Allow the engine to run for 15-20 minutes in a well ventilated area to allow the stabilizer to disperse through the entire fuel delivery system.

AIR FILTER / AIR BOX

Inspect and clean or replace the air filter. See the Air Filter section for details. Clean the air box. Drain the sediment tube.

FLUID LEVELS

Inspect the fluid levels. Add or change fluids as recommended in the Periodic Maintenance Chart section.

- Transmission fluid
- Brake fluid (change every two years and any time the fluid looks dark or contaminated)

ENGINE OIL

Change the oil. See the Engine Oil section for details.

INSPECT AND LUBRICATE

Inspect all cables and lubricate all areas of the vehicle as recommended in the Periodic Maintenance Chart section.

FOG THE ENGINE

1. Treat the fuel system with Carbon Clean or other equivalent fuel treatment. Follow the instructions on the container. Start the engine. Allow it to idle for several minutes so the Carbon Clean reaches the injectors. Stop the engine.
2. Remove the spark plug and add 2-3 tablespoons of engine oil. To access the plug hole, use a section of clear 1/4" hose and a small plastic squeeze bottle filled with the pre-measured amount of oil.
3. Reinstall the spark plug. Torque to specification. See the Spark Plug section for details.
4. Apply dielectric grease to the inside of each spark plug cap. *Do not reinstall the cap onto the plug at this step.*
5. Turn the engine over several times. Oil will be forced in and around the piston rings and ring lands, coating the cylinder with a protective film of fresh oil.
6. If fuel system additive is not used, fuel tank, fuel lines, and injectors should be completely drained of gasoline.
7. Reinstall the spark plug cap to the spark plug.

BATTERY MAINTENANCE

Remove the battery and recharge it as outlined in the Battery Charging section. Store the battery in a cool, dry place.

STORAGE AREA / COVERS

Be sure the storage area is well ventilated. Do not use plastic or coated materials. They do not allow enough ventilation to prevent condensation, and may promote corrosion and oxidation.

REMOVAL FROM STORAGE

1. Check the battery electrolyte level and charge the battery if necessary. Install it in the vehicle. Make sure the battery vent hose is routed properly and that it's not pinched or restricted in any way.
2. Make sure the spark plug is tight.
3. Fill the fuel tank with fuel.
4. Check all the points listed in the Daily Pre-Ride Inspection section. Tightness of the bolts, nuts and other fasteners should be checked by an authorized HAMMERHEAD dealer or other qualified service facility.
5. Lubricate at the intervals outlined in the Periodic Maintenance Chart section.

TRANSPORTING THE VEHICLE

Follow these procedures when transporting the vehicle.

NOTICE

Always tie the frame of the HAMMERHEAD vehicle to the transporting unit securely with suitable straps or rope. Do not attach tie straps to the front control arm bolt pockets.

1. Place the transmission in neutral. Set the parking brake.
2. Stop the engine.
3. Remove the key to prevent loss during transporting.
4. Secure the fuel cap and seats. Ensure that the seats are attached correctly and are not loose.

WARNING

Cargo and other loose vehicle parts may fly off while transporting this vehicle. Secure or remove all cargo, and inspect the unit for loose parts prior to transport.

If transporting the vehicle in a non-enclosed trailer, then the vehicle must FACE FORWARD, or roof must be removed.

Failure to comply may allow airflow, vibration, or other factors to separate the roof from the vehicle and cause an accident, resulting in serious personal injury or death.

5. Wrap the front tie strap through the frame tubes, or attach a tie-down hook around each of the tubes.
6. Wrap the rear tie strap around the swing arm.

SPECIFICATIONS

MUDHEAD 208R

		MUDHEAD 208R
Engine	Engine/Motor Type	4-Stroke
	Displacement	208cc
	Cooling	Air
	Starting	Electric w/Pull Backup
	Fuel System	Carburetor
	Fuel Capacity	0.675 Gal
	Fuel Type	Unleaded 89 Octane
Drivetrain	Drive/Clutch	Automatic CVT
	Drivetype	2 Wheel Drive
	Transmission/Transaxle	F/N/R
	Driveline	Chain
Chassis	Front Suspension	Dual A-Arm
	Rear Suspension	Swing Arm
	Steering	Rack & Pinion
	Rear Brake	Hydraulic Disc
	Seats	Individual Race Style
	Seatbelt	3-Point Harness
	Body	Brush Guard
Tires	Front Tires	16x6-8
	Rear Tires	16x7-8
	Wheels	Steel - Black
	Operating Front Tire Pressure	4-10 PSI
	Max Front Tire Pressure	24 PSI
	Operating Rear Tire Pressure	4-10 PSI
	Max Rear Tire Pressure	24 PSI

SPECIFICATIONS

		MUDHEAD 208R
Dimensions	Length	70"
	Width	46"
	Height	51"
	Wheelbase	53"
	Ground Clearance	3.5"
	Distance Seat to Pedal (Front Edge)	20.5"-22"
	Distance Seat to Pedal (Seat Back)	33.5"-35"
Capacity	Towing Capacity	N/A
	Vehicle Capacity	250 lbs.
	Fuse	15A
	Battery	12V / 9 Amp Hours
Weight	Dry Weight	325

ENGINE TUNE-UP SPECIFICATION	
Idle Mixture	Non-Adjustable
Valve Clearance	.06 mm
Spark Plug	NGK® BPR6ES
Spark Plug Gap	0.6 - 0.7 mm
Ignition Timing	Non-Adjustable
Idle Speed	1700 +/- 100 RPM in Neutral
Fuel	Unleaded Gasoline Only 87 (R+M)/2 Octane or Higher
Engine Oil Viscosity	SAE 10W-30
Engine Oil Capacity	16 oz.

TROUBLESHOOTING

DRIVE BELT WEAR / BURN

POSSIBLE CAUSE	SOLUTION
Driving at low RPM or ground speed	Drive at a higher speed.
Insufficient warm-up at low ambient temperatures	Warm the engine at least 5 minutes. With the transmission in neutral, apply small amount of throttle in short bursts, 5 to 7 times. The belt will become more flexible and prevent belt burning.
Slow/easy clutch engagement	Use the throttle quickly and effectively.
Belt slippage from water or snow ingestion into the CVT system	Dry out the CVT (see the CVT Drying section for details). <i>Prevent water from entering the CVT inlet and outlet ducts (see the Washing the Vehicle section for details).</i> Inspect clutch seals for damage if repeated leaking occurs.
Clutch malfunction	A HAMMERHEAD dealer or other authorized person can assist.
Poor engine performance	Check for fouled plug or foreign material in gas tank, fuel filter, and fuel lines. A HAMMERHEAD dealer or other authorized person can assist.
Wrong or missing belt	Install the recommended belt.
Improper break-in	Always break in a new belt and/or clutch. See the CVT Break-in (Clutches / Belt) section for details.

ENGINE DOESN'T TURN OVER

POSSIBLE CAUSE	SOLUTION
Low battery voltage	Recharge the battery to 12.8 VDC.
Loose battery connections	Check all connections and tighten.
Loose solenoid connections	Check all connections and tighten.

ENGINE PINGS OR KNOCKS

POSSIBLE CAUSE	SOLUTION
Poor quality or low octane fuel	Replace with recommended fuel.
Incorrect ignition timing	Your authorized dealer can assist.
Incorrect spark plug gap or heat range	Set gap to specs or replace plugs.

TROUBLESHOOTING

ENGINE TURNS OVER, FAILS TO START

POSSIBLE CAUSE	SOLUTION
Out of fuel	Refuel.
Water is present in fuel	Drain the fuel system and refuel.
Old or non-recommended fuel	Replace with fresh recommended fuel.
Fouled or defective spark plug	Inspect plug and replace if necessary.
No spark to spark plug	Inspect plug and replace if necessary.
Water or fuel in crankcase	Your authorized dealer can assist.
Low battery voltage	Recharge the battery to 12.8 VDC.
Mechanical failure	Your authorized dealer can assist.

ENGINE BACKFIRES

POSSIBLE CAUSE	SOLUTION
Weak spark from spark plug	Inspect, clean and/or replace spark plug
Incorrect spark plug gap or heat range	Set gap to specs or replace plug
Old or non-recommended fuel	Replace with fresh recommended fuel
Incorrectly installed spark plug wires	An authorized dealer can assist
Incorrect ignition timing	An authorized dealer can assist
Mechanical failure	An authorized dealer can assist
Loose ignition connections	Check all connections and tighten
Water present in fuel	Replace with fresh recommended fuel
Exhaust system leak	An authorized dealer can assist

ENGINE RUNS IRREGULARLY, STALLS OR MISFIRES

POSSIBLE CAUSE	SOLUTION
Fouled or defective spark plug	Inspect, clean and/or replace spark plugs
Worn or defective spark plug wires	An authorized dealer can assist
Incorrect spark plug gap or heat range	Set gap to specs or replace plugs
Loose ignition connections	Check all connections and tighten
Water present in fuel	Replace with new fuel
Low battery voltage	Recharge battery to 12.8 VDC
Clogged fuel cap vent	Inspect and replace
Incorrect fuel	Replace with recommended fuel
Clogged air filter	Inspect and clean or replace
Throttle control malfunction	An authorized dealer can assist
Other mechanical failure	An authorized dealer can assist

POSSIBLE LEAN FUEL CAUSE	SOLUTION
Low or contaminated fuel	Add or change fuel, clean the fuel system
Low octane fuel	Replace with recommended fuel
Clogged fuel filter	An authorized dealer can assist
Incorrect fuel	Replace with recommended fuel

POSSIBLE RICH FUEL CAUSE	SOLUTION
Fuel is very high octane	Replace with lower octane fuel
Stopping/starting without adequate warm-up	Allow engine to warm up before operating and/or stopping
Incorrect fuel	Replace with recommended fuel
Clogged air filter	Inspect and clean or replace

TROUBLESHOOTING

ENGINE STOPS OR LOSES POWER

POSSIBLE CAUSE	SOLUTION
Out of fuel	Refuel
Clogged fuel cap vent	Inspect and replace
Water is present in fuel	Replace with new fuel
Fouled or defective spark plug	Inspect, clean and/or replace spark plug
Worn or defective spark plug wires	An authorized dealer can assist
Incorrect spark plug gap or heat range	Set gap to specs or replace plug
Loose ignition connections	Check all connections and tighten
Low battery voltage	Recharge the battery to 12.8 VDC
Incorrect fuel	Replace with fresh recommended fuel
Clogged air filter	Inspect and clean or replace
Throttle control malfunction	An authorized dealer can assist
Other mechanical failure	An authorized dealer can assist

WARRANTY

LIMITED WARRANTY

HAMMERHEAD Inc., 1200 Lakeside Parkway Ste. 400 Flower Mound, TX 75028 (HAMMERHEAD) provides a ONE HUNDRED and EIGHTY DAY PARTS ONLY LIMITED WARRANTY against defects in material or workmanship for all vehicle frames and engines. HAMMERHEAD further warrants that the spark arrestor in this product will meet the efficiency requirements of USFS standard 5100-1C for at least 1000 hours when subjected to normal use and when maintenance and installation are in accordance with HAMMERHEAD recommendations. This PARTS ONLY LIMITED WARRANTY covers parts charges for repair or replacement of defective parts but does not cover any related labor charges or expense.

HAMMERHEAD provides a NINETY DAY PARTS AND LABOR LIMITED WARRANTY against defects in material or workmanship for all other components, except those consumable, general wear, and exposed to friction components referenced in the following paragraph. This NINETY DAY LIMITED WARRANTY covers parts and labor charges for repair or replacement of defective parts.

HAMMERHEAD provides a THIRTY DAY LIMITED WARRANTY against defects in material or workmanship on all consumable components, general wear items, or any parts exposed to friction surfaces, stresses, environmental conditions and/or contamination for which they were not designed or not intended; including but not limited to the following items:

- Wheels and Tires
- Suspension Components
- Brake Components
- Seat Components
- Clutches and Components
- Steering Components
- Batteries
- Light Bulbs / Sealed Beam Lamps
- Filters
- Lubricants
- Bushings
- Cables
- Finished and Unfinished Surfaces
- Carburetor/Throttle Body Components
- Engine Components
- Drive Belts
- Hydraulic Components and Fluids
- Circuit Breakers/Fuses
- Electronic Components
- Spark Plugs
- Sealants
- Coolants
- Bearings
- Vehicle Tops

This THIRTY DAY LIMITED WARRANTY covers parts and labor charges for repair or replacement of defective parts.

WARRANTY

The duration of these warranties may vary by international region based upon local laws and regulations. These warranties begin on the date of purchase by the original retail purchaser.

REGISTRATION

IMPORTANT!

ALL UNITS MUST BE REGISTERED WITHIN 14 DAYS OF PURCHASE.

To register your product a copy of the Warranty Registration Form and sales receipt must be forwarded to HAMMERHEAD Off-Road. Your dealer, with your assistance, will complete and forward these items to HAMMERHEAD Off-Road. A copy of the Warranty Registration Card and Buyer Safety Agreement is attached. It is your responsibility to confirm with your dealer within 14 days of purchase that your product has been registered. If you are unable to confirm with your dealer within 14 days of purchase that your product has been registered, please contact HAMMERHEAD Off-Road within 14 days of purchase.

WARRANTY COVERAGE AND EXCLUSIONS: LIMITATIONS OF WARRANTIES AND REMEDIES

This HAMMERHEAD limited warranty excludes any failures that are not caused by a defect in material or workmanship. **THIS WARRANTY DOES NOT COVER CLAIMS OF DEFECTIVE DESIGN.** This warranty also does not cover acts of God, accidental damage, normal wear and tear, abuse or improper handling. This warranty also does not cover any vehicle, component, or part that has been altered structurally, modified, neglected, improperly maintained or used for racing, competition or purposes other than for which it was designed.

This warranty excludes damages or failures resulting from: improper lubrication; improper engine timing; improper fuel; surface imperfections caused by external stress, heat, cold or contamination; operator error or abuse; improper component alignment, tension, adjustment or altitude compensation; snow, water, dirt or other foreign substance ingestion/contamination; improper maintenance; modified components; use of aftermarket or unapproved components, accessories, or attachments; unauthorized repairs; or repairs made after the warranty period expires or by an unauthorized repair center.

This warranty excludes damages or failures caused by abuse, accident, fire, or any other cause other than a defect in materials or workmanship and provides no coverage beyond the 180, 90, or 30-day period set forth above

LUBRICANTS AND FLUIDS

1. Mixing oil brands or using non-recommended oil may cause engine damage.
2. Damage or failure resulting from the use of non-recommended lubricants or fluids is not covered by this warranty.

This warranty provides no coverage for personal loss or expense, including mileage, transportation costs, hotels, meals, shipping or handling fees, product pick-up or delivery, replacement rentals, loss of product use, loss of profits, or loss of vacation or personal time.

THE EXCLUSIVE REMEDY FOR BREACH OF THIS WARRANTY SHALL BE, AT HAMMERHEAD'S OPTION, REPAIR OR REPLACEMENT OF ANY DEFECTIVE MATERIALS, COMPONENTS, OR PRODUCTS. THE REMEDIES SET FORTH IN THIS WARRANTY ARE THE ONLY REMEDIES AVAILABLE TO ANY PERSON FOR BREACH OF THIS WARRANTY. HAMMERHEAD SHALL HAVE NO LIABILITY TO ANY PERSON FOR INCIDENTAL, CONSEQUENTIAL OR SPECIAL DAMAGES OF ANY DESCRIPTION, WHETHER ARISING OUT OF EXPRESS OR IMPLIED WARRANTY OR ANY OTHER CONTRACT, NEGLIGENCE, OR OTHER TORT OR OTHERWISE. THIS EXCLUSION OF CONSEQUENTIAL, INCIDENTAL, AND SPECIAL DAMAGES IS INDEPENDENT FROM AND SHALL SURVIVE ANY FINDING THAT THE EXCLUSIVE REMEDY FAILED OF ITS ESSENTIAL PURPOSE.

THE IMPLIED WARRANTY OF FITNESS FOR A PARTICULAR PURPOSE IS EXCLUDED FROM THIS LIMITED WARRANTY. ALL OTHER IMPLIED WARRANTIES (INCLUDING BUT NOT LIMITED TO THE IMPLIED WARRANTY OF MERCHANTABILITY) ARE LIMITED IN DURATION TO THE ABOVE WARRANTY PERIODS. HAMMERHEAD DISCLAIMS ALL EXPRESS WARRANTIES NOT STATED IN THIS WARRANTY. SOME STATES DO NOT PERMIT THE EXCLUSION OR LIMITATION OF INCIDENTAL OR CONSEQUENTIAL DAMAGES OR ALLOW LIMITATIONS ON THE DURATION OF IMPLIED WARRANTIES, SO THE ABOVE LIMITATIONS MAY NOT APPLY TO YOU IF INCONSISTENT WITH CONTROLLING STATE LAW.

WARRANTY

HOW TO OBTAIN WARRANTY SERVICE

If your vehicle requires warranty service, you must take it to a HAMMERHEAD Servicing Dealer. When requesting warranty service you must present your copy of the Warranty Registration Form to the dealer. (THE COST OF TRANSPORTATION TO AND FROM THE DEALER IS YOUR RESPONSIBILITY.) HAMMERHEAD suggests that you use your original selling dealer; however, you may use any HAMMERHEAD Servicing Dealer to perform warranty service.

In the Country where your product was purchased:

Warranty or Service Bulletin repairs must be done by an authorized HAMMERHEAD dealer. If you move or are traveling within the country where your product was purchased, Warranty and Service Bulletin repairs may be requested from any authorized HAMMERHEAD dealer that sells the same line as your product.

Outside the Country where your product was purchased:

If you are traveling temporarily outside the country where your product was purchased, you should take your product to an authorized HAMMERHEAD dealer. You must show the dealer photo identification from the country of the selling dealer's authorized location as proof of residence. Upon residence verification, the servicing dealer will be authorized to perform the warranty repair.

If you move:

If you move to another country, be sure to contact HAMMERHEAD Customer Assistance and the customs department of the destination country before you move. Product importation rules vary considerably from country to country. You may be required to present documentation of your move to HAMMERHEAD in order to continue your warranty coverage. You may also be required to obtain documentation from HAMMERHEAD in order to register your product in your new country. You should warranty register your product at a local HAMMERHEAD dealer in your new country immediately after you move to continue your warranty coverage and to ensure that you receive information and notices regarding your vehicle.

If you purchase from a private party:

If you purchase a HAMMERHEAD product from a private party, to be kept and used outside of the country in which the product was originally purchased, all warranty coverage will be denied. You must nonetheless register your product under your name and address with a local HAMMERHEAD dealer in your country to ensure that you receive safety information and notices regarding your product.

EXPORTED PRODUCTS

EXCEPT WHERE SPECIFICALLY REQUIRED BY LAW, THERE IS NO WARRANTY OR SERVICE BULLETIN COVERAGE ON THIS PRODUCT IF IT IS SOLD OUTSIDE THE COUNTRY OF THE SELLING DEALER'S AUTHORIZED LOCATION. This policy does not apply to products that have received authorization for export from HAMMERHEAD. Dealers may not give authorization for export. You should consult an authorized dealer to determine this product's warranty or service coverage if you have any questions. This policy does not apply to products registered to government officials or military personnel on assignment outside the country of the selling dealer's authorized location. This policy does not apply to Safety Bulletins.

NOTICE

If your product is registered outside of the country where it was purchased and you have not followed the procedure set above, your product will no longer be eligible for warranty or service bulletin coverage of any kind, other than safety bulletins. Products registered to government officials or military personnel on assignment outside of the country where the product was purchased will continue to be covered by the Limited Warranty.

Please work with your dealer to resolve any warranty issues. Should your dealer require any additional assistance, they will contact the appropriate person at HAMMERHEAD.

This warranty gives you specific legal rights, and you may also have other rights which vary from state to state or in different countries. If any of the above terms are void because of federal, state, local law, all other warranty terms will remain in effect.

For questions call HAMMERHEAD Customer Assistance:

United States & Canada: 214-513-1700

WARRANTY

EMISSIONS CONTROL SYSTEM LIMITED WARRANTY

This emissions control system limited warranty is provided in addition to the HAMMERHEAD Off-Road Inc. standard limited warranty for your vehicle. In the remainder of this Emission Control System Limited Warranty, HAMMERHEAD Off- Road Inc. will be referred to as HAMMERHEAD.

For HAMMERHEAD vehicles containing LIQUID COMBUSTION TECHNOLOGY, LLC engines, please refer to the LIQUID COMBUSTION TECHNOLOGY, LLC EMISSION CONTROL WARRANTY STATEMENT. This LIQUID COMBUSTION TECHNOLOGY, LLC EMISSION CONTROL WARRANTY STATEMENT is provided to you in the LCT ENGINES Operation Manual which was included with your vehicle at purchase. Please contact your local HAMMERHEAD dealer to replace a lost or missing LCT ENGINES Operation Manual. If the dealer is unavailable or unable to provide the needed materials, please contact HAMMERHEAD for assistance.

Hammerhead Off-Road Inc.
1200 Lakeside Parkway #400
Flower Mound, TX 75028
Telephone: 214-513-1700 or toll-free 1-800-275-1701
Fax: 214-513-1711
Email: mail@hammerheadoffroad.com

OFF-ROAD WARRANTY REGISTRATION FORM**Registration Terms & Conditions**

In order to activate the warranty, please follow the instructions below:

1. Make a copy of the Bill of Sale.
2. Make a copy of Pre-Delivery Checklist.
3. Fill out warranty card and send with all above documents to:

Hammerhead Off-Road
Attn: Warranty Registration
1200 Lakeside Parkway Ste. 400
Flower Mound, TX 75028
Or, Fax to 214-513-1738

Or, go online to www.hammerheadoffroad.com under dealer's only section

HAMMERHEAD OFF-ROAD WARRANTY REGISTRATION CARD

(Must be sent in with a copy of sales receipt)

VIN#:

Model:

Dealer Name:

Dealer Address (Street / City / State / ZIP):

Customer Name:

Customer City and State:

Customer Phone / Email:

Date of Purchase:

I Certify that all information provided is true and correct to the best of my knowledge. I understand the exceptions and limitations of the warranty coverage.

Customer Signature:

Date:

3-Point Seat Belt	26
-------------------------	----

A

Age Restrictions	13
Air Filter.....	59
Air Filter / Air Box.....	74

B

Battery	68
Charging	69
Battery Installation	69
Battery Maintenance	75
Battery Removal.....	69
Battery Storage	71
Boots	12
Brake Fluid.....	63
Brake Pedal	27
Brake System Break-in	32
Brakes	62
Inspection	62
Braking	35

C

Carrying a Passenger	15
Carrying Multiple Passengers.....	15
Chrome Wheel Care	73
Clothing.....	12
Component Locations.....	25
Constant Variable Transmission (CVT) System	58
Crankcase Emission Control System	43
Crossing Hillside.....	17
CVT Break-in (Clutches / Belt).....	32
CVT Drying	58

D

Drive Belt Wear / Burn	79
Drive Chain Lubrication.....	54
Drive Chain Slack Adjustment	54

Driver's Seat Adjustment.....	26
Driving Downhill	39
Driving Downhill Improperly	17
Driving in Reverse	40
Driving on a Sidehill (Sidehilling) ...	38
Driving on Slippery Surfaces	37
Driving Over Obstacles	41
Driving Through Water.....	40
Driving Uphill	38
Driving with a Passenger.....	39

E

Electromagnetic Interference	43
Emissions Control System Limited Warranty.....	88
Engine and Drivetrain Break-in	31
Engine Backfires	80
Engine Doesn't Turn Over	79
Engine Oil.....	74
Engine ON / OFF Switch	27
Engine Pings or Knocks	79
Engine Runs Irregularly, Stalls or Misfires	81
Engine Stops or Loses Power	82
Engine Turns Over, Fails to Start... ..	80
Equipment Modifications	21
Exhaust Valve Clearance Adjustment	57
Exported Products	87
Exposure to Exhaust	20
Eye Protection	12

F

Failure to Inspect Before Operating	14
Fluid Change	53
Fluid Check	53
Fluid Levels.....	74
Fog the Engine	75
Front Wheel Hub Tightening	65
Front Wheel Replacement.....	65
Fuel Cap.....	30

G	
Gear Selector	29
Gloves	12

H	
Headlamp Replacement.....	66
Helmet	12
Horn	27
Hot Exhaust Systems	21
How To Obtain Warranty Service...	86

I	
Improper Hill Climbing	17
Improper Tires and Maintenance...	19
Inspect and Lubricate	74
Intake Valve Clearance Adjustment	57

J	
Jumps and Stunts	16

L	
Light Switch.....	27
Limitations Of Warranties And Remedies.....	84
Limited Warranty	83
Lubricants and Fluids	85
Lubrication Recommendations	49

M	
Maintenance Chart Key	46
Maintenance Log.....	91
Mechanical Speed Control System	29

N	
New Operator Driving Procedures.....	35
Noise Emission Control System	43
Normal Plug	55
Notice	87

O	
Off-Road Warranty Registration Form	89
Oil Change.....	51
Oil Check.....	50
Oil Recommendations	50
Operating at Excessive Speeds	16
Operating Improperly in Reverse...	18
Operating in Unfamiliar Terrain	18
Operating on Frozen Bodies of Water	19
Operating on Pavement	15
Operating on Public Roads	16
Operating on Sand or Slippery Terrain	18
Operating Over Obstacles	19
Operating Through Water	19
Operating Without Instruction	13
Operation on Public Lands in the U.S.A.....	43
Overloading the Vehicle	18

P	
Parking Brake	28
Parking on an Incline	40
Parking the Vehicle	35
Periodic Maintenance Severe Use Definition	45
Periodic Maintenance Chart.....	45
Physical Control of the Vehicle	17
Polishing the Vehicle	73
Pre-Ride Inspection	32
Protective Apparel	15

R

Rear Wheel Replacement	66
Refueling	20
Registration	84
Removal from Storage	75
Reporting Safety Defects (Canada)	24
RIDE COMMAND+	30
Rider Height	14

S

Safe Operation Practices	33
Safe Riding Gear	11
Safety Labels Locations	22
Safety Symbols	7
Safety Warnings	13
Seat Belt Inspection	26
Seat Belts	14, 26
Signal Words	7
Spark Arrestor	60
Spark Plug Gap / Torque	55
Spark Plug Removal and Replacement	56
Specifications	77
Stabilize the Fuel	74
Stalling While Climbing a Hill	17
Starting the Engine	34
Steering Wheel Inspection	63
Stopping the Engine	34
Storage Area / Covers	75
Storage Tips	74

T

Throttle Freeplay	61
Throttle Freeplay Adjustment	61
Throttle Freeplay Inspection	61
Throttle Pedal	27
Throttle System	61
Tire Tread Depth	65
Tires	65
Toe Alignment	64
Trademarks	2

Transmission (Main Gearcase)	53
Transporting the Vehicle	76
Turning Improperly	16

U

Unauthorized Use of the Vehicle ...	21
Use of Alcohol and Drugs	14

V

Valve Adjustment Procedure	56
Vehicle Break-in Period	31
Vehicle Identification Numbers	9
Vehicle Immersion	67

W

Warning Symbols	7
Washing the Vehicle	72
Welcome Page	3
Wet Fouled Spark Plug	55
Wheel Nut Torque Specifications ...	66

WARNING

Improper vehicle use can result in **SEVERE INJURY** or **DEATH**

NEVER Operate:

- Without proper training or instruction.
- At speeds too fast for your skills or the conditions.
- On public roads - a collision can occur with another vehicle.
- With a passenger - passengers affect balance and steering and can increase risk of losing control.

ALWAYS:

- Use proper riding techniques to avoid vehicle overturns on hills, rough terrain, and in turns.
- Avoid paved surfaces - pavement may seriously affect handling and control.



ALL RIDERS MUST WEAR AN APPROVED HELMET AND PROTECTIVE GEAR.
ALL RIDERS MUST WEAR SEAT BELTS. NEVER USE ON PUBLIC ROADS.
NEVER USE WITH DRUGS OR ALCOHOL.
READ OWNER'S MANUAL. FOLLOW ALL INSTRUCTIONS AND WARNINGS.



POLARIS

Hammerhead Off-Road is part of the
Polaris Family.

Polaris Industries Inc.
2100 Highway 55
Medina, MN 55340
Part No. 9941328 Rev 01

