

Owner's Manual

Parts Manual

Twister
Hammerhead

**READ THIS MANUAL CAREFULLY,
IT CONTAINS IMPORTANT SAFETY INFORMATION.**

UM125TR

**MINIMUM
RECOMMENDED
OPERATOR AGE: 16**



FOR OFF-ROAD USE ONLY

This vehicle is designed and manufactured for off-road use only.

USA only:

It does not conform to Federal Motor Vehicle Safety Standards,
it is illegal to operate on public streets, roads, or highways

UM125IIR Limited Warranty

The warranty policy applies to those cases the new seller vehicle unloaded from its shipping container, set up and delivered by an authorized dealer, and under normal use and service is found to have defects in parts or workmanship under the following terms and conditions. This warranty covers the kart and engine related components for a period of 90 days.

This warranty does not apply to any part, which in opinion of seller was defective because of improper maintenance, improper assembly, alterations, abuse, negligence or accident.

Should warranty service be required on your UM125IIR during the 90 days warranty period, please contact your nearest authorized dealer for repairs.

What is not covered under this warranty

Misuse, Negligence, Alterations, Accidents or any abnormal use including non Genuine parts, renting or leasing, competition or racing. This warranty does not cover loss of use of the unit or loss of time, or inconvenience or normal wear and deterioration caused by the use or storage of consumable items such as spark plugs, chain, brake shoes, fuses, clutch plates, sprockets, light bulbs, battery and tires.

CONTENTS

OWNER'S MANUAL

	Page
1. FOREWORD	1
2. A FEW WORDS ABOUT SAFETY	2
3. IMPORTANT SAFETY INFORMATION	3
4. SAFETY LABELS	5
5. ARE YOU READY TO DRIVE ?	6
6. IS YOUR VEHICLE READY TO DRIVE ?	8
7. SAFE DRIVING PRECAUTIONS	10
8. P.D.I.	12
9. SPECIFICATIONS	13
10. OPERATION	15
11. SERVICE INSTRUCTIONS	19
12. REPAIR	23
13. PERIODICAL CHECK AND SERVICE	25

PARTS MANUAL

	Fig
1. CYLINDER HEAD ASSY.	Fig. 1
2. CYLINDER ASSY.	Fig. 2
3. CRANKCASE ASSY.	Fig. 3
4. CRANKCASE ASSY.(2)	Fig. 4
5. CRANKSHAFT CONROD & PISTON ASSY.	Fig. 5
6. CAMSHAFT ASSY.	Fig. 6
7. LEFT COVER ASSY.	Fig. 7
8. FAN COVER AND SHROUD ASSY.	Fig. 8
9. OIL PUMP ASSY.	Fig. 9
10. DRIVEN PULLEY AND CLUTCH SUBASSY.	Fig.10
11. TRANSMISSION ASSY.	Fig.11
12. ELECTRIC SYSTEM	Fig.12
13. ELECTRIC STARTER ASSY.	Fig.13
14. DRIVE PULLEY SUBASSY.	Fig.14
15. CARBURETOR	Fig.15
16. FRAME GROUP	Fig.16
17. STEERING SHAFT ASSY.	Fig.17
18. SUSPENSION ARM ASSY.	Fig.18
19. REAR CARGO RACK/SEAT/BELT	Fig.19
20. ENGINE/MUFFLER/AIR CLEANER	Fig.20
21. REAR SWING ARM	Fig.21
22. REAR HOUSING	Fig.22
23. WIRE HARNESS/ELECTRICAL	Fig.23
24. REVERSE ASSY.	Fig.24
25. WARNING STICKERS	Fig.25

Thank you for purchasing our Kart. We hope you will enjoy it. Before you start to operate the Kart, please read through this Owner's Manual carefully as it contains important safety and maintenance information. Failure to follow the warnings contained in this manual can result in serious injuries or death.

Be sure to follow the recommended maintenance schedule and service your kart accordingly. Preventive maintenance is extremely important to the longevity of your Kart.

Beginners should seek instructions from your dealer or qualified instructors before and during initial use of the kart. It is also recommended to practice in a large open area and familiar with operations of this kart.

We hope you will have a pleasant experience with our products and thanks again for choosing our Kart.

A FEW WORDS ABOUT SAFETY


In order to keep everyone safe, you must take responsibility for the safe operation of your Kart.

To help you make informed decisions about safety, we have provided operating procedures and other information on labels and in this manual. This information alerts you to potential hazards that could hurt you or others.

It is not practical or possible to warn you about all hazards associated with operating or maintaining a Kart. You must use your own good judgment.

You will find important safety information in a variety of forms, including:

Safety Labels – On the Kart.

Safety Messages – Preceded by a safety alert symbol  and one of two signal words: **WARNING**, or **CAUTION**.

These signal words mean:



Physical harm may result from failure to adhere to the instructions that are described within the **WARNING** labels.

Safety Headings — such as Important Safety Reminders or Important Safety Precautions.

Safety Section — such as Kart Safety.

Instructions — how to use this Kart correctly and safely.

This entire manual is filled with important safety information—please read it carefully.

IMPORTANT SAFETY INFORMATION

Your Kart will provide you with many years of service and pleasure. Providing you take responsibility for your own safety and understand the challenges you can meet while driving.

There is much that you can do to protect yourself while operating your kart. You'll find many helpful recommendations throughout this manual. The following are a few that we consider most important.

Follow the Age Recommendation

Adult Supervision should be present for all people under the age of 16.

Always Wear a Helmet

It's a proven fact: helmets significantly reduce the number and severity of head injuries. Always wear an approved motorcycle helmet. We also recommend that you wear eye protection, sturdy boots, gloves, and other protective gear.

Drive Off-Road Only

Your Kart is designed and manufactured for off-road use only. The tires are not made for pavement, and the Kart does not have turn signals and other features required for use on public roads. If you need to cross a paved or public road, get off and walk your Kart across.

Take Time to Learn & Practice

Even if you have driven other Karts, take time to become familiar with how this Kart works and handles. Practice in a safe area until you build up your skills and get accustomed to this Kart's size and weight.

Because many accidents involve inexperienced or untrained drivers, we urge all drivers to take a training course approved by the Go-Kart Safety Institute. Check with your dealer for more information on training courses.

Be Alert for Off-Road Hazards

The terrain can present a variety of challenges when you drive off-road. Continually "read" the terrain for unexpected turns, drop-offs, rocks, ruts, and other hazards. Always keep your speed low enough to allow time to see and react to hazards.

IMPORTANT SAFETY INFORMATION

Drive within Your Limits

Pushing limits is another major cause of Kart accidents. Never drive beyond your personal abilities or faster than conditions warrant. Remember that alcohol, drugs, fatigue, and inattention can significantly reduce your ability to make good judgments and drive safely.

Don't Drink and drive

Alcohol and driving don't mix. Even one drink can reduce your ability to respond to changing conditions, and your reaction time gets worse with every additional drink. So don't drink and drive, and don't let your friends drink and drive either.

Do not operate this Kart at night.

Dark vision can greatly reduce a driver's visibility and judgment. So driving at night is dangerous and can increase the possibility for an accident.

Never run your Kart indoors.

The exhaust from the engine contains a tasteless, odorless and poisonous gas called carbon monoxide.

Keep away from moving parts of the Kart

The operator of the Kart should never place their hands or other parts of their body near any moving part of the Kart. Failure to adhere to this warning will cause physical harm to your body.

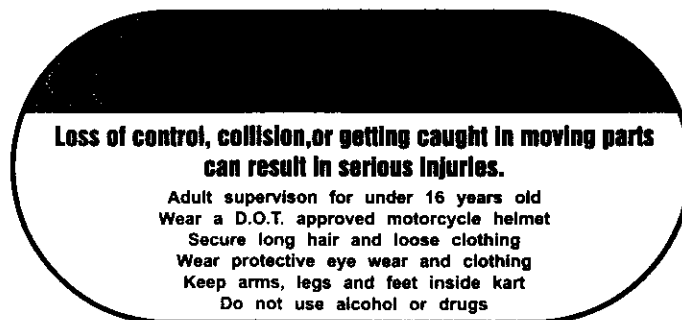
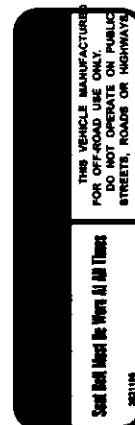
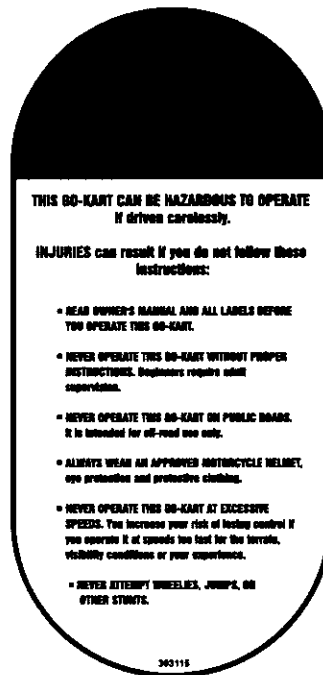
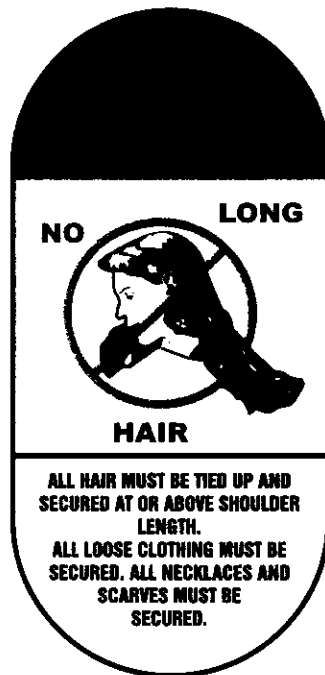
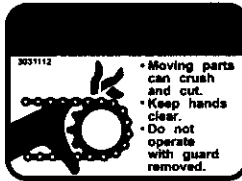
Skidding or Sliding

The terrain surface can be a major factor affecting turns. Skidding in a turn is more likely to occur on slippery surfaces such as snow, ice, mud and loose gravel. If you skid on ice, you may lose all directional control. To avoid skidding on slippery terrain, keep your speed low and drive carefully.

SAFETY LABELS

This section presents some of the most important information and recommendations to help you drive your Kart safely. Please take a few moments to read these pages.

The labels should be considered permanent parts of the Kart. If a label comes off or becomes hard to read, contact your dealer for warning label replacements.



ARE YOU READY TO DRIVE ?

Before each drive, you need to make sure you and your Kart are both ready to drive. To help get you prepared, this section discusses how to evaluate your driving readiness, what items you should check on your Kart, and adjustments to make for your comfort, convenience, or safety.

Before you drive your Kart for the first time, we urge you to:

- Read this owner's manual and the labels on your Kart carefully.
- Make sure you understand all the safety messages.
- Know how to operate all the controls.
- Have adult present if under 16 years old.

Before each drive, be sure:

- You wear your seat belt all times while driving your kart.
- You feel well and are in good physical and mental condition.
- You are wearing an approved motorcycle helmet (with chin strap tightened securely), eye protection, and other protective clothing.
- You don't have any alcohol or drugs in your system.

Protective Apparel

For your safety, we strongly recommend that you always wear an approved motorcycle helmet, eye protection, boots, gloves, long pants, and long-sleeved shirt or jacket whenever you drive.

Although complete protection is not possible, wearing proper gear can reduce the chance of injury when you drive.

The following suggestions will help you choose the proper driving gear.

Helmets and Eyes Protection

Your helmet is your most important piece of driving gear because it offers the best protection against head injuries. A helmet should fit your head comfortably and securely.

An open-face helmet offers some protection, but a full-face helmet offers more. Regardless of the style, look for a DOT (Department of Transportation) sticker on any helmet you buy. Always wear a face shield or goggles to protect your eyes and help your vision.



WARNING

Operating this Go-Kart without wearing an approved motorcycle helmet, eye protection, and protective clothing could increase your chances of head and/or eye injury, and the possibility of death in the event of a severe accident.

Always wear an approved motorcycle helmet that fits properly and wear eye protection (goggles or face shield), gloves, boots, long-sleeved shirt or jacket and long pants.

ARE YOU READY TO DRIVE ?

Additional Driving Gear

In addition to a helmet and eye protection, we also recommend:

- Sturdy off-road motorcycle boots to help protect your feet, ankles, and lower legs.
- Off-road motorcycle gloves to help protect your hands.
- Driving pants with knee and hip pads, a driving jersey with padded elbows, and a chest/shoulder protector.

Driver Training

Developing your driving skills is an on-going process. Even if you have driven other Karts, before take time to become familiar with how this Kart works and handles. Practice driving the Kart in a safe area to build your skills. Do not drive in rough terrain until you get accustomed to the Kart's controls, and feel comfortable with its size and weight.



WARNING

Operating this Kart without your seat belt could cause you to be thrown from the kart, causing serious injury or death.

Age Recommendation

It is strongly recommended that no one under the age of 16 be permitted to operate this Go-Kart without adult supervision.



WARNING

A child driving a Kart that is not recommended for his/her age could lose control of the Kart and result in severe injury or death.

A child under 16 should have adult supervision when operating the Kart.

No Alcohol or Drugs

Alcohol, drugs and Karts don't mix. Even a small amount of alcohol can impair your ability to operate a Kart safely. Likewise, drugs-even if prescribed by a physician-can be dangerous while operating a Kart. Consult your doctor to be sure it is safe to operate a vehicle after taking medication.



WARNING

Operating this Kart after consuming alcohol or drugs can seriously affect your judgment, cause you to react more slowly, affect your balance and perception, and could result in serious injury or death.

Never consume alcohol or drugs before or while operating this Kart.

IS YOUR VEHICLE READY TO DRIVE ?

Before each drive, it is important to inspect your Kart and make sure any problems you find are corrected. A pre-drive inspection is a must, not only for safety, but because having a breakdown, or even a flat tire, can be a major inconvenience.

If your Kart has overturned or has been involved in a collision, do not drive it until your Kart has been inspected by your dealer. There may be damages or other problems you can not see.



WARNING

Improperly maintaining this Kart or failing to correct a problem before driving can cause a crash in which you can be seriously hurt or killed.

Always perform a pre-drive inspection before every drive and correct any problems.

Pre-drive Inspection

Check the following items before you get on the Kart:

■ Engine Oil

Check the level and add oil if needed. Check for leaks.

■ Fuel

Check the level and add fuel if needed. Also make sure the fuel fill cap is securely fastened. Check for leaks.

■ Tires

Use a gauge to check the air pressure. Adjust if needed. Also look for signs of damages or excessive wear.

■ Nuts & Bolts

Check the wheels to see that the axle nuts are tight. Use a wrench to make sure all accessible nuts, bolts, and fasteners are tight.

■ Underbody & Exhaust System

Check for and remove any dirt, vegetation or other debris that could be a fire hazard or interfere with the proper operation of the Kart.

■ Air Cleaner Housing Drain Tube

Check for deposits in the drain tube. If necessary, clean the tube and check the air cleaner housing.

IS YOUR VEHICLE READY TO DRIVE ?

■ Leaks, Loose Parts

Walk around your Kart and look for anything that appears unusual, such as a leak or loose cable.

■ Lights

Make sure the headlight, brake light and taillight are working properly.

■ Throttle

Check the freeplay and adjust if needed. Press the throttle to make sure it moves smoothly without sticking, and snaps back automatically when it is released.

■ Brakes

Press the rear brake pedal several times, check for proper brake pedal freeplay. Make sure there is no brake fluid leakage.

■ Engine Stop Button

While engine is running, press and hold the Engine Stop Button for two seconds. Make sure engine stops.

■ Steering Wheel

Check that the wheels turn properly as you turn the steering wheel.

■ Cable

Check all cable housings for wear. Check the fittings for looseness. Replace or tighten as needed.

■ Seat Belts

Check your seat belts make sure that the locking latch works and that you can adjust them.

SAFE DRIVING PRECAUTIONS

Off-Road Use Only

Your Kart and its tires are designed and manufactured for off-road use only, not for pavement. Driving on pavement can affect handling and control. You should not drive your Kart on pavement.

WARNING

Operating this Kart on paved surfaces may seriously affect handling and control of the Kart, and may cause the vehicle to go out of control.

Never operate the Kart on any paved surfaces, including sidewalks, driveways, parking lots and streets.

When driving off-road, also remember to always obey local off-road driving laws and regulations. Obtain permission to drive on private property. Avoid posted areas and obey "no trespassing" signs.

You should never drive your Kart on public streets, roads or highways, even if they are not paved. Drivers of street vehicles may have difficulty seeing and avoiding you, which could lead to a collision. In many states it is illegal to operate Karts on public streets, roads and highways.

WARNING

Operating this Kart on public streets, roads or highways could cause a collision with another vehicle.

Never operate this Go-Kart on any public streets, roads or highways, it is dirt, gravel or pavement.

Keep Hands and Feet on Controls

When driving your Kart. Always keep both hands on the steering wheel and both feet on the foot controls. It is important to maintain your balance and to control the Kart. Removing hands or feet away from the controls can reduce your ability to react and control the kart.

WARNING

Removing hand from Steering wheel or feet from foot controls during operation can reduce your ability to control the Kart or could cause you to lose your balance and fall off the kart.

Always keep both hand on the steering wheel and both feet on the foot controls of your kart during operation.

SAFE DRIVING PRECAUTIONS

Control Speed

Driving at excessive speed increases the chance of an accident. In choosing a proper speed, you need to consider the capability of your Kart, the terrain, visibility and other operating conditions, plus your own skills and experience.



WARNING

Operating this Kart at excessive speeds increases your chances of losing control of the Kart, which can result in an accident.

Always drive at a speed that is proper for your Kart, the terrain, visibility and other operating conditions, and your experience.

Use Care on Unfamiliar or Rough Terrain

Before driving in a new area, always check the terrain thoroughly. Don't drive fast on unfamiliar terrain or when visibility is limited. (it's sometimes difficult to see obstructions like hidden rocks, bumps, or holes in time to react.)



WARNING

Failure to use extra care when Operating this Kart on unfamiliar terrain could result in the Kart overturning or going out of control.

Go slowly and be extra careful when operating on unfamiliar terrain. Always be alert to changing terrain conditions when operating the Kart.

Never drive past the limit of visibility. Maintain a safe distance between your Kart and other off-road vehicles. Always exercise caution and use extra care on rough, slippery and loose terrain.



WARNING

Failure to use extra care when operating on excessively rough, slippery or loose terrain could cause loss of traction or vehicle control, which could result in an accident, including an overturn.

Do not operate on excessively rough, slippery or loose terrain until you have learned and practiced the skills necessary to control the Kart on such terrain. Always be especially cautious on these kinds of terrain.

Do Not Perform Stunts

You should always operate your Kart in a safe and reasonable manner. When driving, always keep all four wheels on the ground.



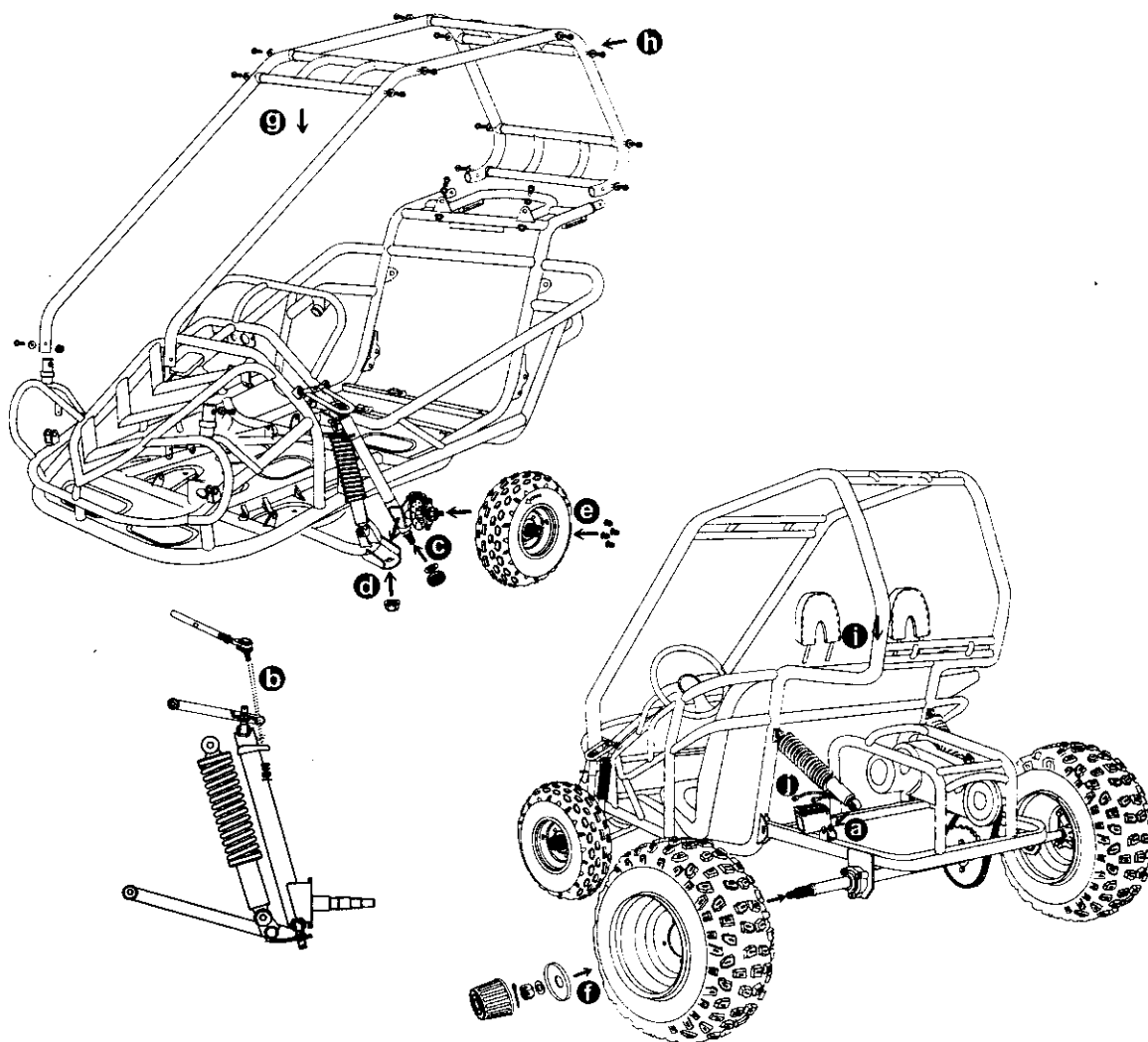
WARNING

Attempting wheelies, jumps, and other stunts increases the chance of an accident, including an overturn.

Never attempt stunts, such as wheelies or jumps. Don't try to show off.

PD.I.

- a. Install RR. Shocks and tighten the nuts.
- b. Install Ball Head, Tie Rod, tighten the Castle Nut and insert the cotter Pin.
- c. Install Dust Seals, align the Ball Head Bolt, Knuckle Support to the square hole on the Lower A-Arm.
- d. Install Flange Nut and tighten it (> 88.9 foot lbs)
- e. Install Front Tires and tighten the nuts.
- f. Install Rear Tires, tighten the nuts, insert cotter Pin and put on the Rubber Cover.
- g. Raise the C.B.C custom bar cage as what picture shows
- h. Install C.B.C custom bar cage RR., put on R-Washer.
- i. Install Head-Rest.
- j. Check all nuts and bolts, wiring, cables, fuel line, switches and tire pressure.
- k. Fill battery with Acid and charge, check and fill the engine with the recommended oil.
- l. Fill fuel tank with Unleaded Gasoline, and turn on the ignition switch to start the engine.



SPECIFICATIONS

DIMENSIONS

Overall Length	85 in. (2160mm)
Overall Width	53 in. (1346mm)
Overall Height	57.4 in. (1458mm)
Wheelbase	59 in. (1500mm)
Front Track	45.7 in. (1160mm)
Rear Track	39.4 in. (1000 mm)
Ground Clearance	6.7 in. (170mm)

ENGINE

Type	Forced air-cooled. 4-Stroke
Engine capacity	125cc
Bore / Stroke	52.4mm x 57.8mm
Displacement	125cm ³
Corrected compression ratio	9.2:1
Carburetor	KF,CB24J
Output Power	5.5Kw/7000rpm
Maximum Torque	8/5500 foot lbs/r/min
Starting	Electric
Ignition	C.D.I.
Lubrication	Force & Splash
Transmission	Automatic (C.V.T system)
Spark plug	C7HSA(NGK)
Plug gap	0.6-0.7mm
Fuel Type	RQ90 (unleaded)
Lubricate oil	SAE-10W/40

CAPACITIES

Maximum load	Double Seats/400lbs
Fuel tank	1.75 Gal
Engine oil	30 Oz
Starting	<5s
Climbing	20°-25°
Battery	12V 8Ah
Head Light	12V 35W
Tail Light	12V 21W/5W
Fuse	10A

SPECIFICATIONS

Brake Track ----- < 7 m@20miles/h
Top speed ----- 40 miles/h(or limited as customers require)

CHASSIS

Front, Rear brake ----- Hydraulic disc, left foot control
Front tire ----- 19 x 7-8
Rear tire ----- 19 x 9.5 -8
Front Suspension ----- Independent Dual A-Arm
Rear Suspension ----- Swing Arm/Double Oil Damped Shock
Restraint System ----- Dual 4-point Harness
Final Drive Chain ----- (KMC) Chain

TIRE PRESSURE

Front ----- 15kPa 0.15kg/cm² 2.2psi
Rear ----- 20kPa 0.20kg/cm² 2.9psi

WEIGHT

Net Weight ----- 415 lbs

A. Operation controls

WARNING - Do not attempt to start or operate the engine until completely familiar with the location and use of each control necessary to operate this vehicle. The operator must know how to stop this machine before starting and driving it.

a. Throttle

The right foot pedal is the throttle that controls the Kart speed. As the engine speed increased above idle, the clutch automatically engages and moves the vehicle forward. To disengage the clutch at any time, allow the throttle to return to the idle position. (See Fig. 1)



WARNING

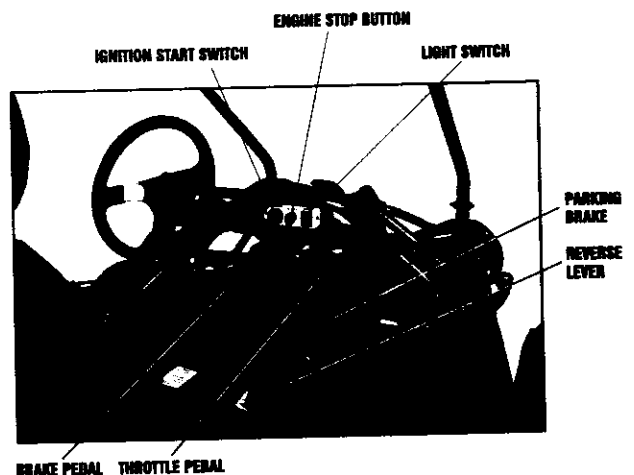
Each time prior to starting the engine, check the throttle assembly to ensure that when the pedal is pushed all the way forward the assembly is working smoothly and returns to idle when released. Do not operate if pedal or engine throttle linkage fail to return to idle. If unable to correct the problem through lubrication, adjustment or replacement of worn parts, contact your dealer for assistance.

b. Brake

The brake is located on the left side of the kart (See Fig.1). Applying pressure to the pedal draws the brake caliper around the brake pump at the rear wheel and slows or stops the kart.

c. Start engine

Insert the key into key-switch, turn the key clockwise, release the key when the engine starts. The engine will warm up within 5 minutes and the engine choke will close automatically and operate at the normal RPM (Warning: Don't crank starter more than 5 seconds at one time).



d. Engine stop button

Important-stop button test.

Before driving this vehicle, test the Engine Stop Button to assure that it is operating properly. With the engine running, push and hold the Engine Stop Button for two seconds for the engine to shut down.

Figure 1

OPERATION

B. Pre-Drive Inspection



WARNING

Perform this pre-drive inspection everyday before driving vehicle. If not performed, serious damage to the vehicle or personal injury may result.

- a. Check for Engine Oil Level. Check for leaks, add oil if required.
- b. Check for Fuel Level. Add fuel as necessary and do not overfill. Check for leaks.
- c. Check for Brakes. Depress the rear brake pedal several times, then check for proper brake pedal freeplay. Make sure there is no brake fluid leakage. Adjust if necessary.
- d. Check Tires. Check tires condition and pressure. The pressure on both Front and Rear tire is 5 and 8 lbs respectively.
- e. Check Drive Chain. Check for drive chain's condition and tension. Lubricate if necessary.
- f. Check Throttle. Check for smooth operation. Assure throttle "snaps" back to idle.
- g. Check Engine Stop Button. Perform engine stop button test. Repair as necessary.
- h. Check all Nuts, Bolts, and fasteners. Check wheels to see that all axle nuts and lug nuts are tightened properly. Check and tighten as necessary all other fasteners to specified condition.
- i. Check C.B.C custom bar cage, Ensure all protective roll cage bars are in place before operating the Kart.
- j. Check Brake Light. Check for proper operation.
- k. Check Wheels. Check for tightness of wheel nuts and axle nuts; check that axle nuts are secured by cotter pins.
- l. Check Steering. Check for free operation for any unusual looseness in any area.
- m. Check seat belts, Always make sure your seat belts are fastened and that the latch is working.



CAUTION

Always follow rules for safe operation and wear a helmet.

Component locations

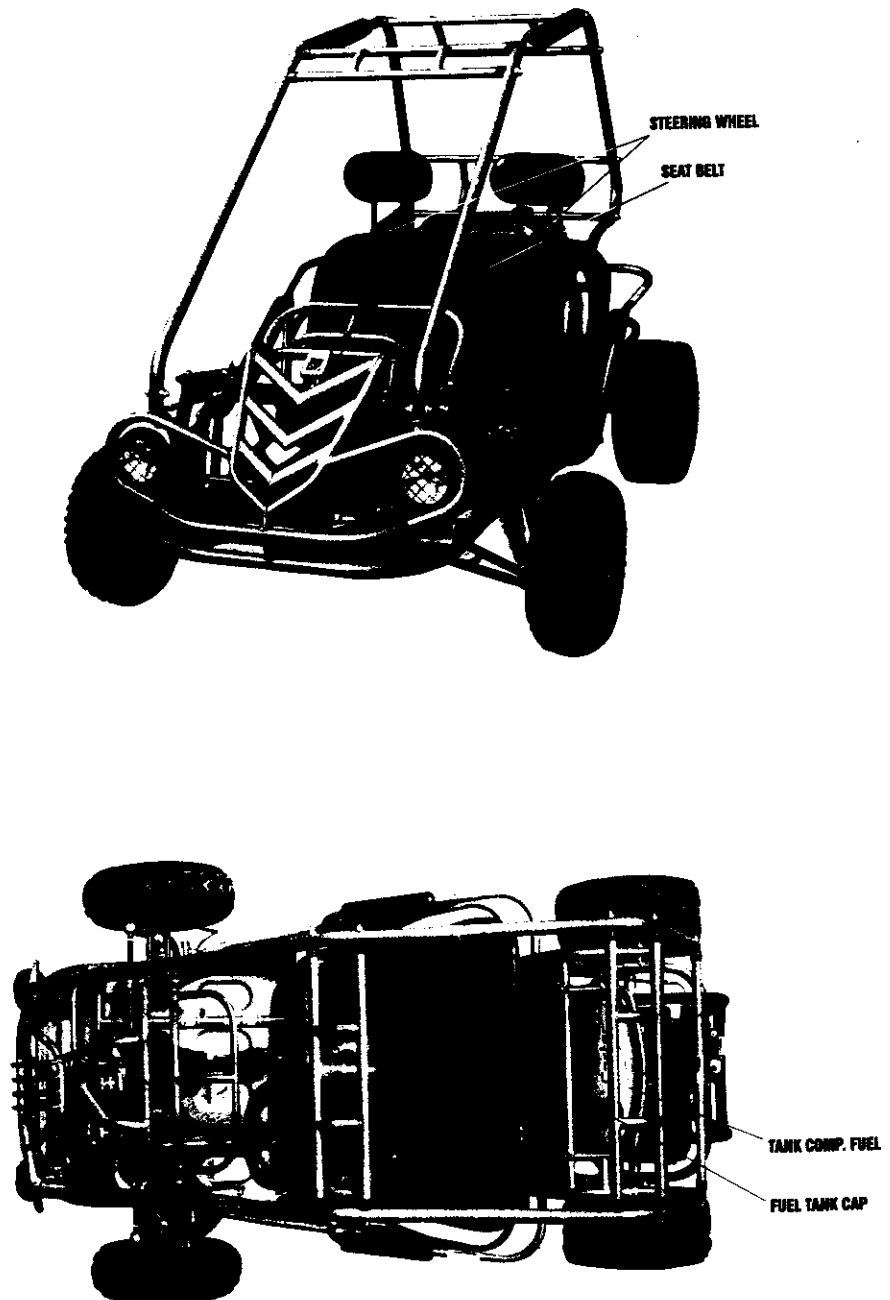


Figure 2

OPERATION

C. Passengers

The vehicle allows for two riders only. Combine maximum weight of driver and the passenger should not exceed 180kg or 400lbs.

D. Seat Adjustment

The seat must always be securely fastened in the position which best affords the operator control of the foot pedals, steering wheel, and the remote stop button.

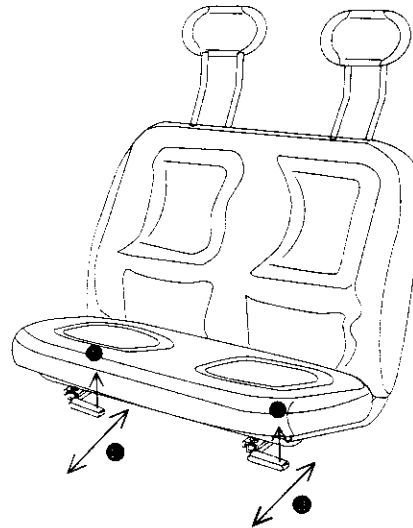


Figure 3

WARNING

Before attempting to adjust the seat, ensure that kart engine is stopped.

WARNING

Never operate this Kart when the provided seat is not securely fastened, to do so could result in a strong possibility of severe personal injury or loss of life. Before attempting to adjust the seat, ensure the kart engine is stopped.

E. Reverse Adjustment

a. Push forward the reverse lever to the "D" position so that the unit can move forward, pull back the lever to "R" so that the unit can move backward. (See Fig.4)

b. When reverse lever is in the drive position, there need to be 1/2 inch of freeplay in the reverse level. If the adjustment is not correct, then loosen the lock nut #2, then adjust lock nut #1 to the proper amount of freeplay.

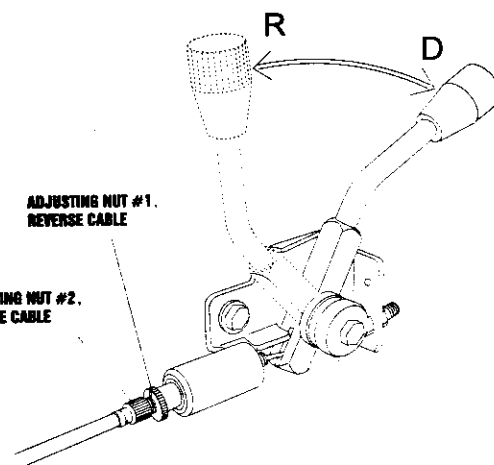


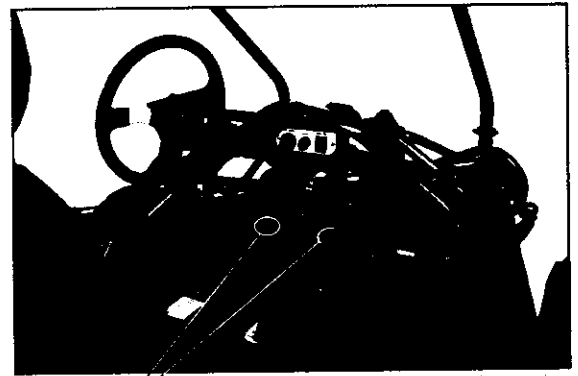
Figure 4

Always stop the kart before changing gears.

OPERATION/SERVICE INSTRUCTIONS

F. Starting And Operating Instructions

- a. Before starting the engine, be sure that the driver is seated properly in the Kart with the seat belt.
- b. Testing the Kart in an open space at the beginning to learn how to start, turn and stop.
- c. Operate the Kart slowly until you are familiar with it.
- d. The turning radius of this Kart is small and agile, so the centrifugal force is very high when turning at high speed. Slow down to a more controllable speed when turning to prevent the Kart from rolling over.
- e. To prevent vehicle from rolling over, be sure to only turn the vehicle at a slow more controllable speed. Heel on the ramp of the main board when turning. (See Fig.5) Keep your leg rely on the foot pedal, you can feel the kart is stable because of the gravity is adjusted and won't roll over.



POSITION FOR HEEL

Figure 5

SERVICE INSTRUCTIONS

A. Service Air Cleaner

Service air cleaner every 20 hours

NOTE: Service more often under dusty conditions.

- a. Remove cleaner cover
- b. Remove air cleaner element 2 (See Fig.6)
- c. Fill the non-flammable cleaning agent into a basin and dip the element in it.
- d. Dry it after cleaning.

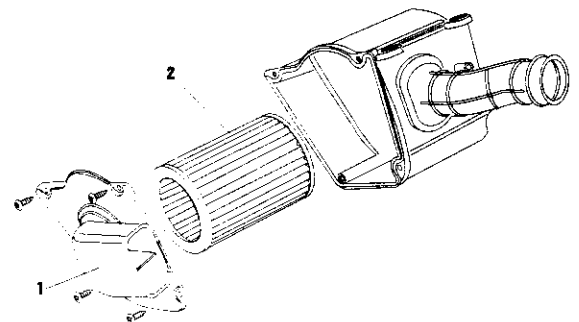


Figure 6

SERVICE INSTRUCTIONS

B. Engine Lubrication

You must change the oil in the crankcase after the first 5 hours of operating of your new engine (See Fig. 7) and after 10 hours of use thereafter. That will insure proper lubrication of internal parts and prevent costly repairs due to excessive wear.



WARNING

Used Oil Must Be disposed of at a proper collection Center

a. Remove drain plug located on the right rear side of engine. Tip kart backwards slightly by blocking up the front end and drain oil into suitable container.

b. Remove and clean Oil Screen.

c. Replace drain plug and tighten securely. Place kart in a level position.

d. Refill crankcase (approximately 1 1/4 pint) to top of filler neck with SAE 10W40 oil. Use same grade of oil as used originally.

e. Check oil level before each use of kart or after each 10 hours of operation. Add oil to bring up to proper level. Do not mix various grades of oil.

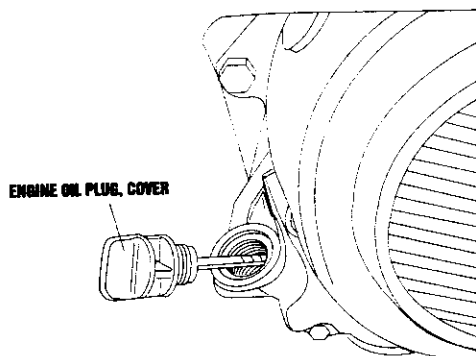


Figure 7

C. Spark Plug

a. Remove the spark plug and inspect it each time you change the oil. (Use a spark plug wrench) The electrodes should be kept clean and free of carbon. The presence of carbon or excess oil will greatly reduce proper engine performance. If possible, check the spark plug gap (area between electrodes) using a wire feeler gauge. This specification is 0.6~0.7mm.

b. Before installing spark plug coat threads lightly with graphite grease if possible, to ensure easy removal next time the spark plug needs inspection.

c. It is advisable to replace the spark plug at least once a year to insure easy starting and good engine performance.

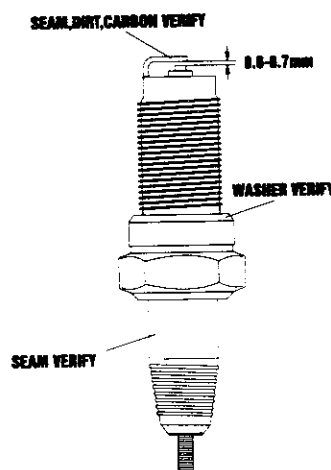


Figure 8

D. Carburetor Adjustment

Never make unnecessary adjustments. The factory recommended settings are correct for most applications.

- Warm up the engine (5~10min)
- Tighten the air screw gently. Backout 2-3/8 turns counter clockwise.
- Connect the tachometer, adjust the throttle to limit the idle speed. The standard value is (1400RPM).
- Turn the air screw counter clockwise slowly and observe the RPM of the engine, stop adjusting as the RPM reaches the top speed.
- Adjust the screw and adjust the idle speed to an ideal value.
- Recheck and readjust the idle speed if necessary.

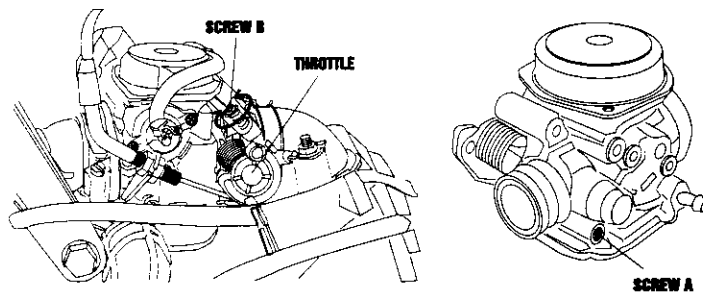


Figure 9

E. Cleaning Instructions

Keep your kart clean. With a clean rag, wipe off and dirt and oil from around controls. Wipe off any spilled fuel and oil. Keep the engine clean of foreign objects, and be sure to check that air intake fan is free of debris for proper cooling.

F. Kart Lubrication

Lubricate vehicle every 90 days of use. Lubrication should be done sooner, if kart is used everyday.

G. Chain Lubrication

To increase chain life, it should be lubricated with a spray on type chain lubricant. (See Fig. 10)

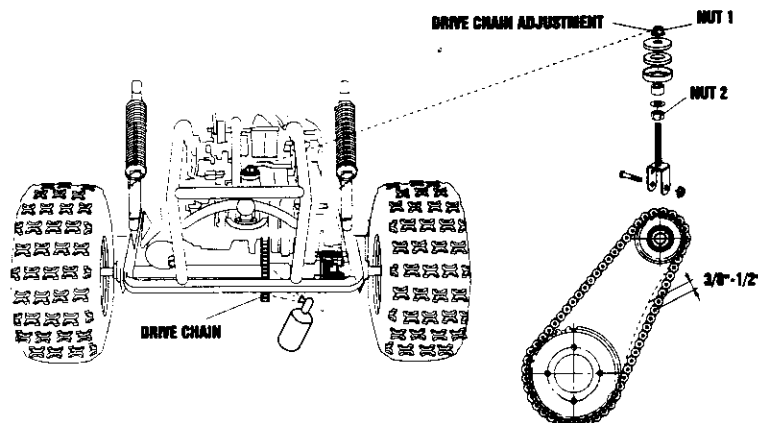


Figure 10

SERVICE INSTRUCTIONS

H. Chain Adjustment

Check the chain adjustment after first two hours of use. Readjust if it has more than 1/2" flex.

- Loosen Nut #1
- Adjust Nut #2. Turn Nut #2 clockwise in 1/2 turn increments, then turn nut #1 until tight.

Follow this procedure until chain is at proper tension (See Fig. 10).

- Repeat the above two steps until chain is adjusted to desired fit.

I. Adjustment of Front And Rear Shock

There are five adjustable positions on each shock. The default position is in the middle set by manufacturer (See Fig. 11)

Use a round nut wrench as you adjust the shock, the tension of shock spring will increase as you screw to left, decrease as you screw to right. Adjust according to the weight of the riders.

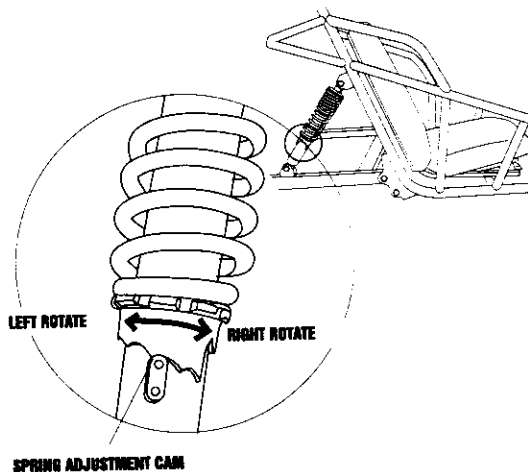


Figure 11

J. Storage Instruction

In the event your kart is not to be operated for a period in excess of 30 days or at the end of each driving season prepare for storage as follows:

- Drain fuel tank and carburetor by allowing engine to run out of fuel, and use a fuel stabilizer.
- Lubricate engine cylinder by removing the air cleaner, then spray engine fogging oil through the carburetor until motor dies.
- Do not save or store gasoline over winter. Using old gasoline, which has deteriorated from storage, will cause hard starting and affect engine performance.

WARNING

Do not drain fuel while engine is hot. Be sure to move Kart outside before draining fuel.

A. Front Wheel Replacement

Do not disassemble the castle nuts when you replace the front wheels.

It is only necessary to remove the 4 lug nuts to remove the wheel. (See Fig. 12)

Tighten the nuts after replacing the wheels.

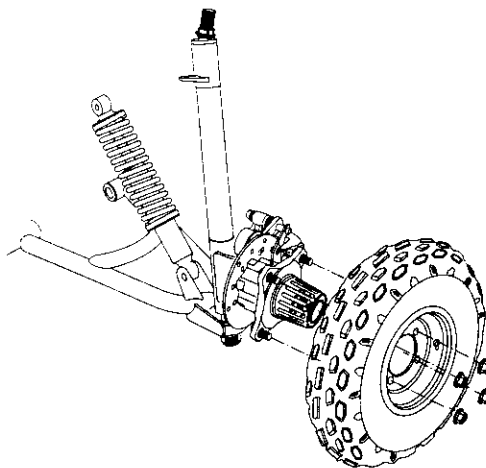


Figure 12

B. Rear Wheel Replacement

Do not disassemble the castle nuts when you replace the rear wheels and hub assembly.

Remove the cotter pin and then 24mm nut. Then slide off wheel and hub assembly.

It is only necessary to remove the 4 lug nuts to remove the wheel by itself. (See Fig.13)

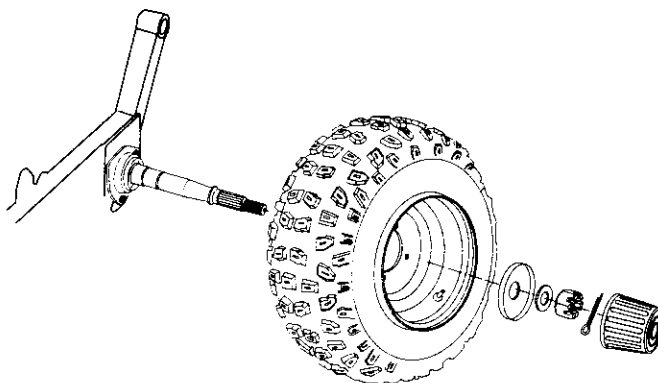


Figure 13

C. Front Wheel Alignment

a. The front wheels should be "toe-in" from $1/8"$ to $1/4"$. To check for alignment, measure distance A and B between the centerline (CL) of the wheels. The proper toe-in dimension A should be $1/8" - 1/4"$ greater than dimension B.

b. To adjust the alignments, loosen the lock nuts on both sides of Front Tie Rods. To make Dimension B smaller, turn the rod to left. Adjust the rod to right direction to make Dimension B larger. After adjusting to the desired length, tighten the lock nut against the rod end. Recheck the dimensions for proper alignment.

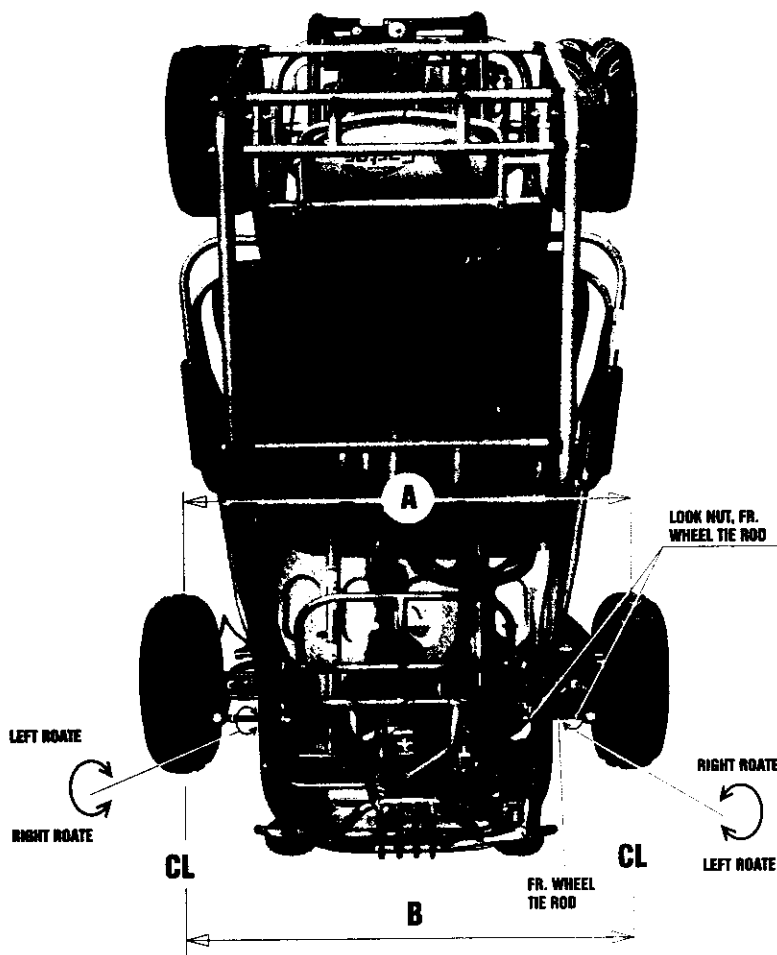


Figure 14

PERIODICAL CHECK AND SERVICES

The maintenance intervals in the following table are based upon average driving conditions. Driving in unusually dusty areas, require more frequent servicing.

Items	Time of service	Initial service (first week)	Monthly	Quarterly	Yearly
Tire pressure/wear		I	I		
Brake performance		I	I		
Tightness of screws		I	I		
Air cleaner				C	I
Carburetor		I	A		C
Spark plug				C, A	
Drive chain		I	I	C, A, L	
Brake oil				I	
Replace gearbox oil			I	R	
Chassis			C, I	L	
Fuel switch/fuel tank			I		C
Battery				I	
Valve clearance of engine				A	

A: adjust C: clean I: inspect, clean or replace if necessary. L: lubricate R: replace

WIRING DIAGRAM

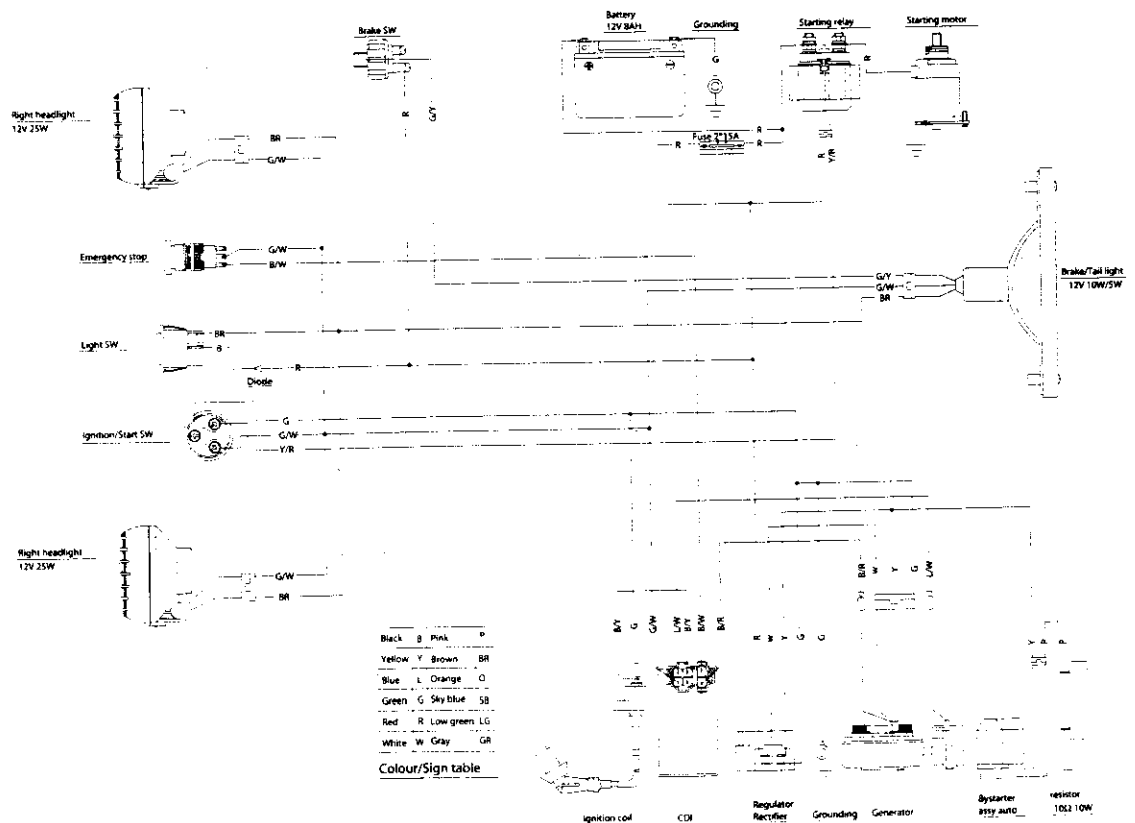
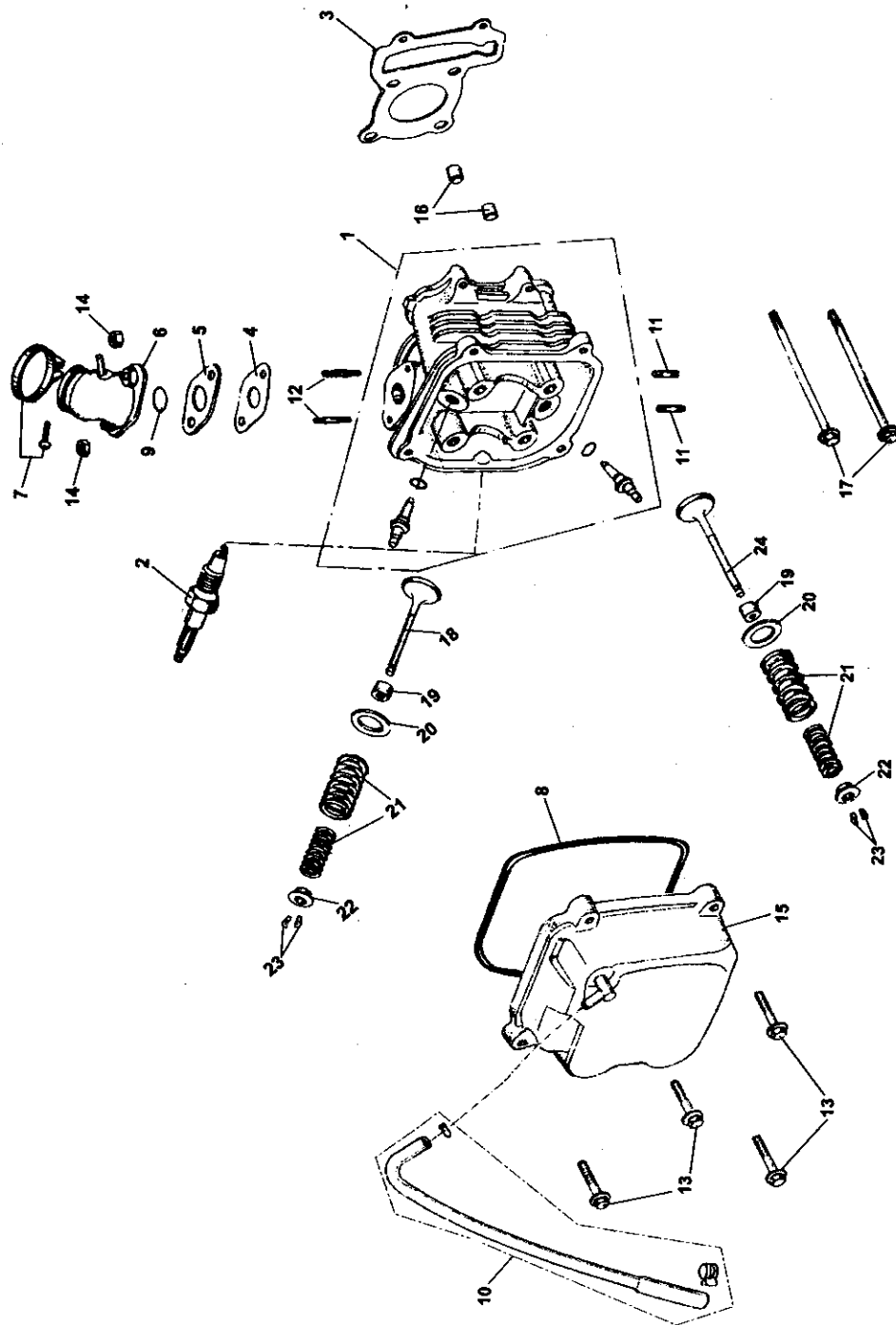


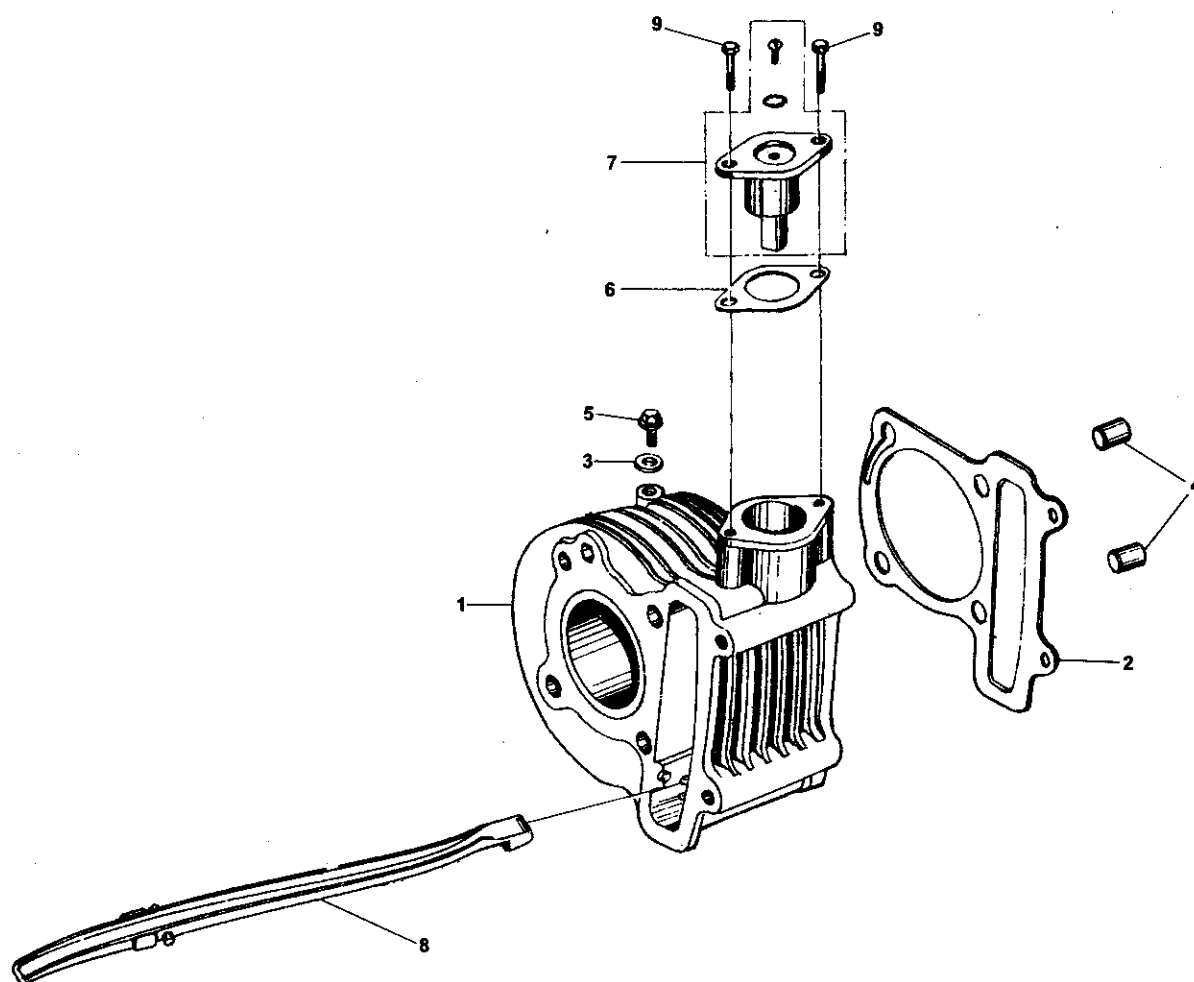
FIG. 1

CYLINDER HEAD ASSY.

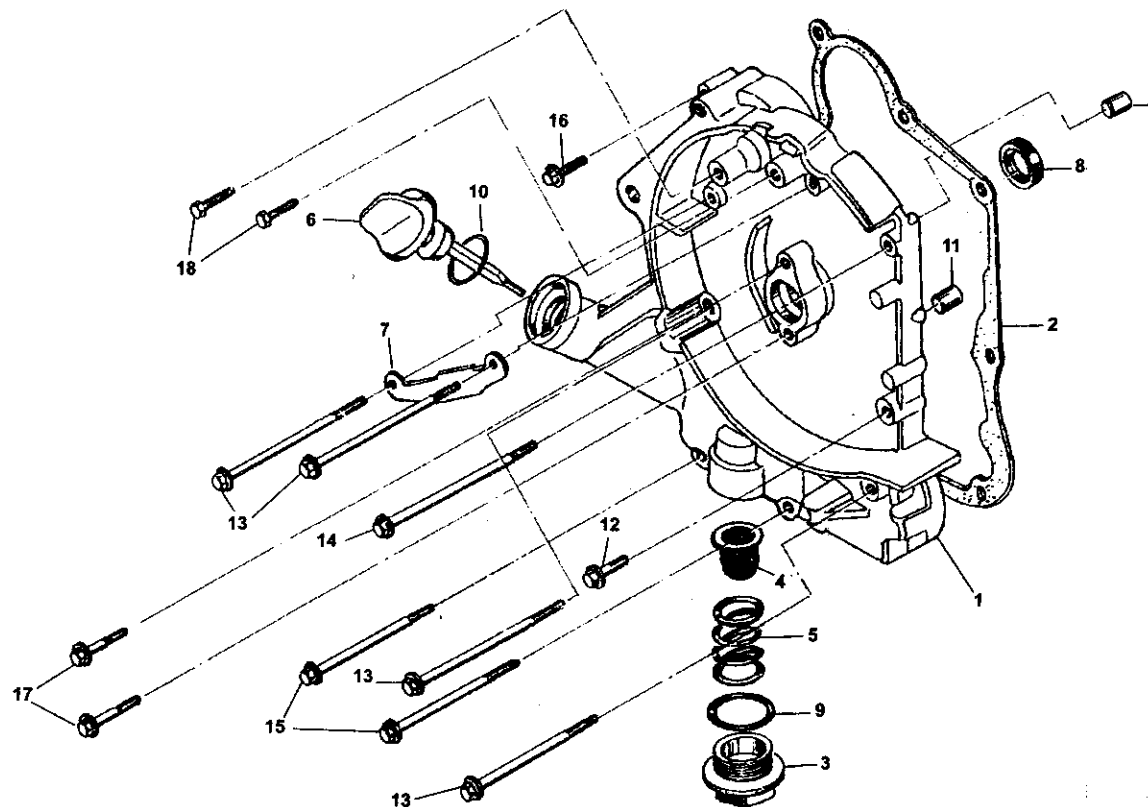


PARTS DIA

[illegible]

CYLINDER ASSY.**CYLINDER ASSY.**

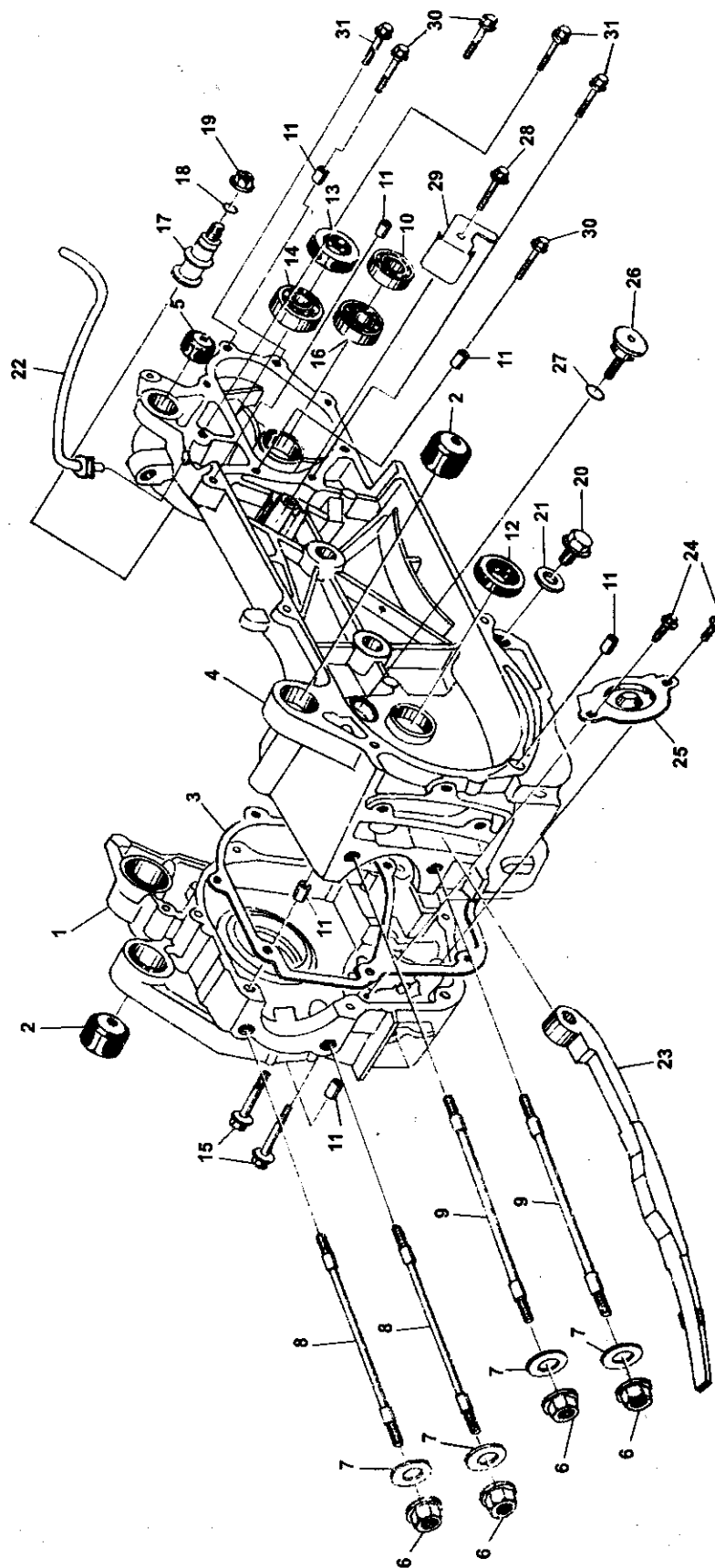
REF NO.	PART NO.	DESCRIPTION	REGD NO.	
1	M125-1002200	CYLINDER COMP.	1	
2	M150-1002001	CYLINDER GASKET	1	
3	90442-06000-KAT	SEALING WASHER $\varnothing 6$	1	
4	M150-1001007	DOWEL PIN $\varnothing 10 \times 16$	2	
5	96001-06012-KAT	FLANGE BOLT M6X12-ZN. D	1	
6	M150-1002002	LIFTER TENSIONER GASKET	1	
7	M150-1002100	LIFTER TENSIONER ASSY.	1	
8	M150-1002300	CAM CHAIN GUIDE COMP.	1	
9	96001-06020-KAT	FLANGE, BOLT M6X20	2	



CRANKCASE ASSY.(1)			
REF NO.	PART NO.	DESCRIPTION	REGD NO.
1	M150-1003101	CRANKCASE COVER R COMP.	1
2	M150-1003013	CRANKCASE COVER, GASKET	1
3	M150-1003104	ADJUSTING TAPPET CAP HOLE	1
4	M150-1003120	OIL FILTING SCREEN	1
5	M150-1003102	OIL FILTING SCREEN SPRING	1
6	M150-1003105	OIL LEVEL GAUGE	1
7	M150-1003006	AC GENERATOR CORD CLAMP	1
8	M150-1003110	OIL SEAL 19.8X30X5	1
9	M150-1003103	O-RING 30.8X3	1
10	M150-1003307	O-RING 18X3	1
11	M150-1003005	DOWEL PIN 8X14	2
12	96001-06032-KAT	FLANGE BOLT M6X28	1
13	M150-1003012	FLANGE BOLT M6X95	4
14	M150-1003007	FLANGE BOLT M6X100	1
15	M150-1003008	FLANGE BOLT M6X110	2
16	M150-1003034	FLANGE BOLT M6X35	1
17	M150-1003106	FLANGE BOLT M6X20	2
18	92101-05012-OH	HEX BOLT M5X12-ZN.D	2

FIG. 4

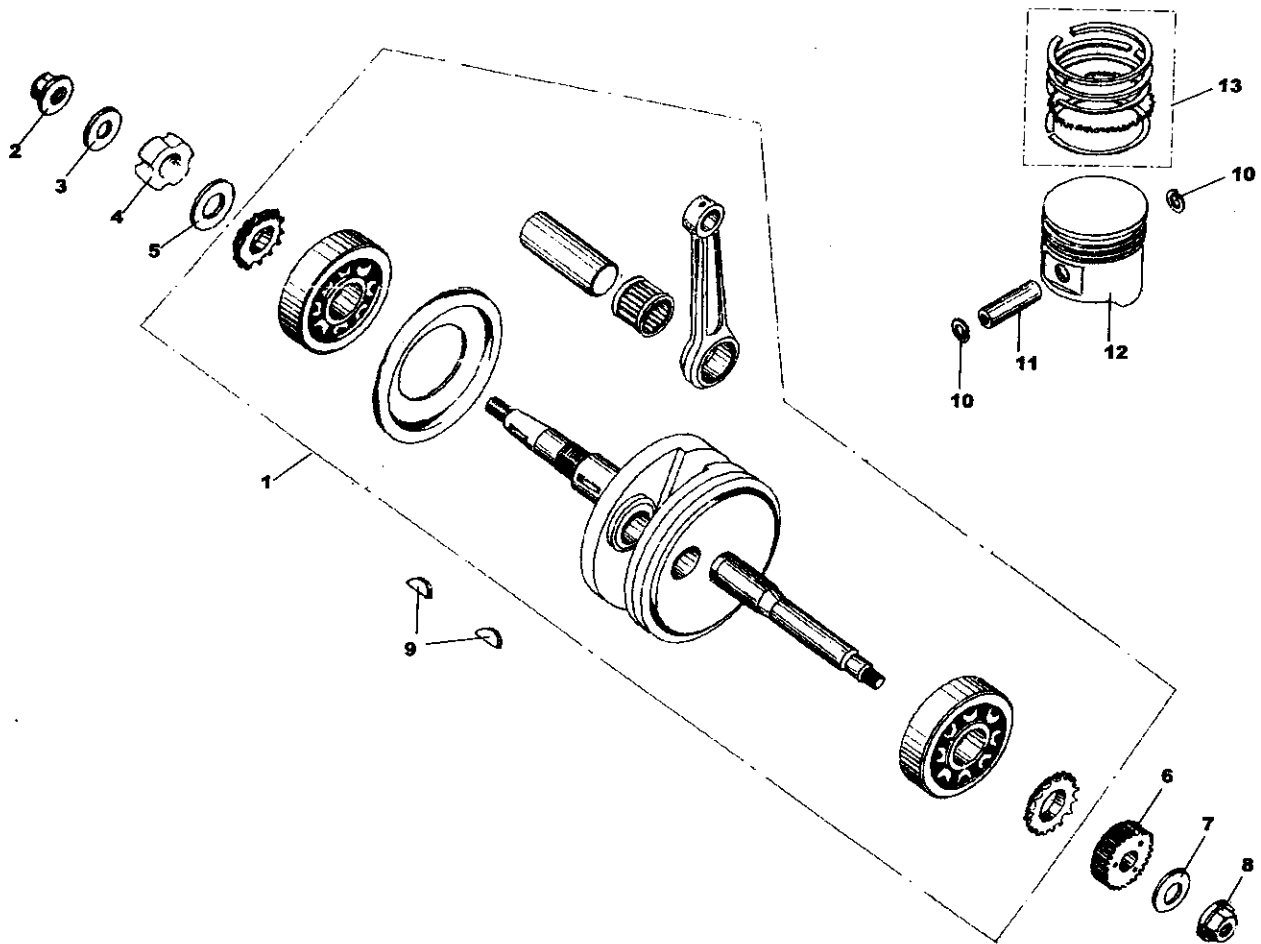
CRANKCASE ASSY. (2)



CRANKCASE ASSY. (2)

REF NO.	PART NO.	DESCRIPTION	REGD NO.
1	M150-1003210	CRANKCASE ASSY. R	1
2	M150-1003320	ENGINE RUBBER BUSH HANGER	2
3	M150-1003014	CRANKCASE GASKET	1
4	M150-1003310	CANKCASE ASSY. L	1
5	M150-1003330	RUBBER CUSHION UNDER BUSH RR	1
6	M150-1003003	FLANGE NUT M8	4
7	M150-1003004	WASHER Ø8	4
8	M150-1003001	STUD BOLT M8X187.5	2
9	M150-1003002	STUD BOLT M8X195.5	2
10	91004-E6002-KAT	RADIAL BALL BEARING E6002	1
11	M150-1003005	DOWEL PIN 8X14	6
12	M150-1003110	OIL SEAL 19.8X30X5	1
13	M150-1003340	OIL SEAL 27X42X7	1
14	91004-E6004-2RS	RADIAL BALL BEARING E6004-2RS	1
15	M150-1003032	FLANGE BOLT M6X50	2
16	91004-E6301-KAT	RADIAL BALL BEARING E6310	1
17	M150-1003015	BRAKE SHOE ANCHOR PIN	1
18	M150-1003016	OIL SEAL 7.5X15	1
19	M150-1003600	FLANGE NUT M8	1
20	M150-1003018	DRAIN PLUG BOLT M12	1
21	M150-1003019	DRAIN PLUG WASHER Ø12	1
22	M150-1003400	BREATHER TUBE	1
23	M150-1003500	CAM CHAIN TENSIONER	1
24	M150-1003203	FLANGE BOLT M6X12	2
25	M150-1003202	OIL SEPARATOR	1
26	M150-1003022	CAM CHAIN PIVOT TENSIONER	1
27	M150-1003023	OIL SEAL 15.2X12	1
28	96001-06014-KAT	FLANGE BOLT M6X14	1
29	M150-1003021	RETURN KICK PLATE STOPPER	1
30	M150-1003009	FLANGE BOLT M6X35	3
31	M150-1003011	FLANGE BOLT M6X25	3

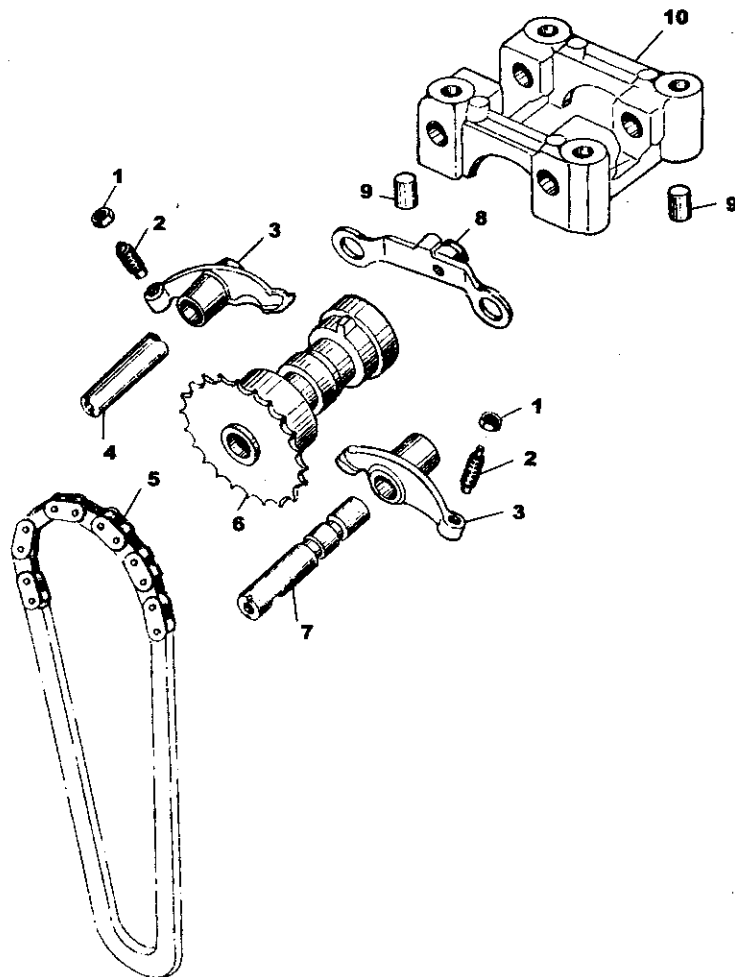
CRANKSHAFT CONROD & PISTON ASSY.



CRANKSHAFT CONROD & PISTON ASSY.

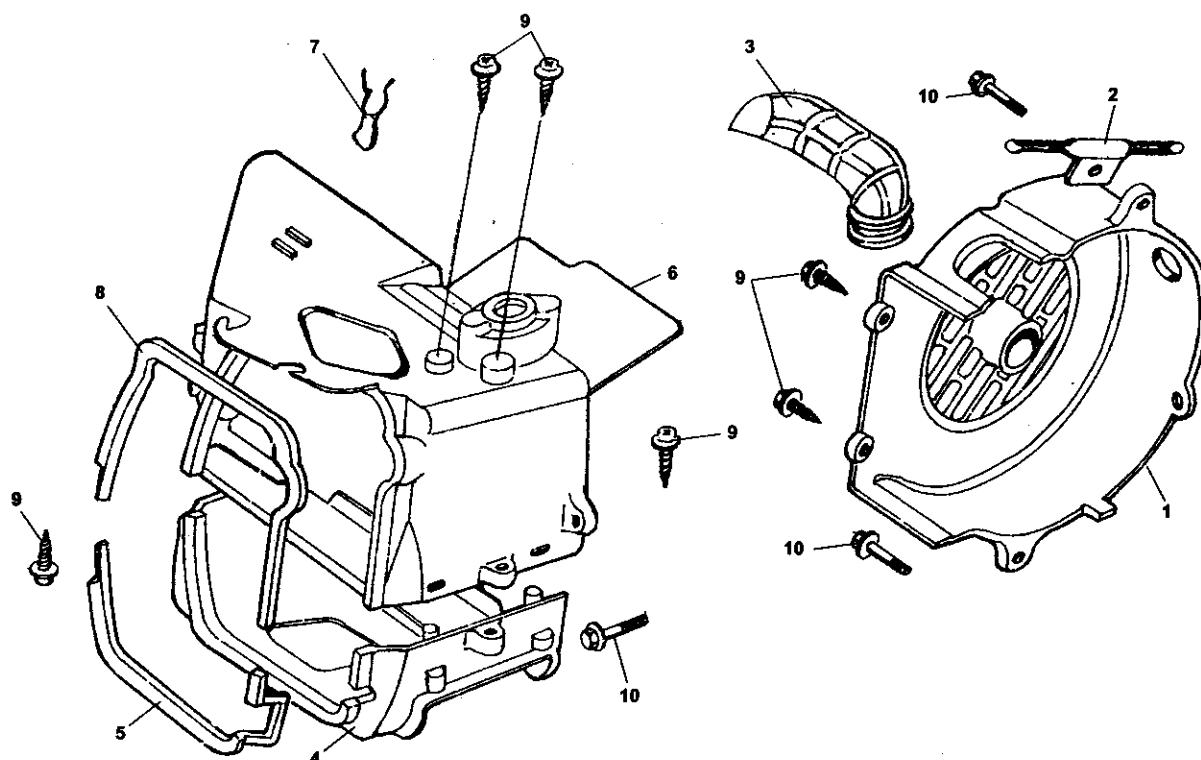
REF NO.	PART NO.	DESCRIPTION	REGD NO.	
1	M150-1004100	CRANKSHAFT & CONROD ASSY.	1	
2	M150-1004007	NUT M12X1.25	1	
3	M150-1004011	WASHER 12-149HV 12-140HV	1	
4	M150-1004009	LOCKING NUT	1	
5	M150-1004013	WASHER	1	
6	M150-1004012	KICK DRIVE GEAR	1	
7	M150-1040005	WASHER Ø12	1	
8	M150-1004008	NUT M12	1	
9	M150-1004002	WOODRUFF KEY	2	
10	M150-1004003	PISTON PIN CLIP	2	
11	M125-1004006	PISTON PIN	1	
12	M125-1004001	PISTON	1	
13	M125-1004200	PISTON RING SET	1	

CAMSHAFT ASSY.



CAMSHAFT ASSY.				
REF NO.	PART NO.	DESCRIPTION	REGD NO.	
1	M150-1005004	ADJUSTING TAPPET NUT	2	
2	M150-1005003	ADJUSTING TAPPET SCREW	2	
3	M150-1005002	VALVE ARM ROCKER	2	
4	M150-1005005	ROCKER ARM SHAFT EX	1	
5	M150-1005400	CAMSHAFT, CHAIN	1	
6	M150-1005300	CAMSHAFT COMP. 16T	1	
7	M150-1005200	ROCK ARM SHAFT COMP. IN	1	
8	M150-1005100	STOPPER PLATE COMP.	1	
9	M150-1001007	DOWEL PIN 10X16	2	
10	M150-1005001	CAMSHAFT HOLDER	1	

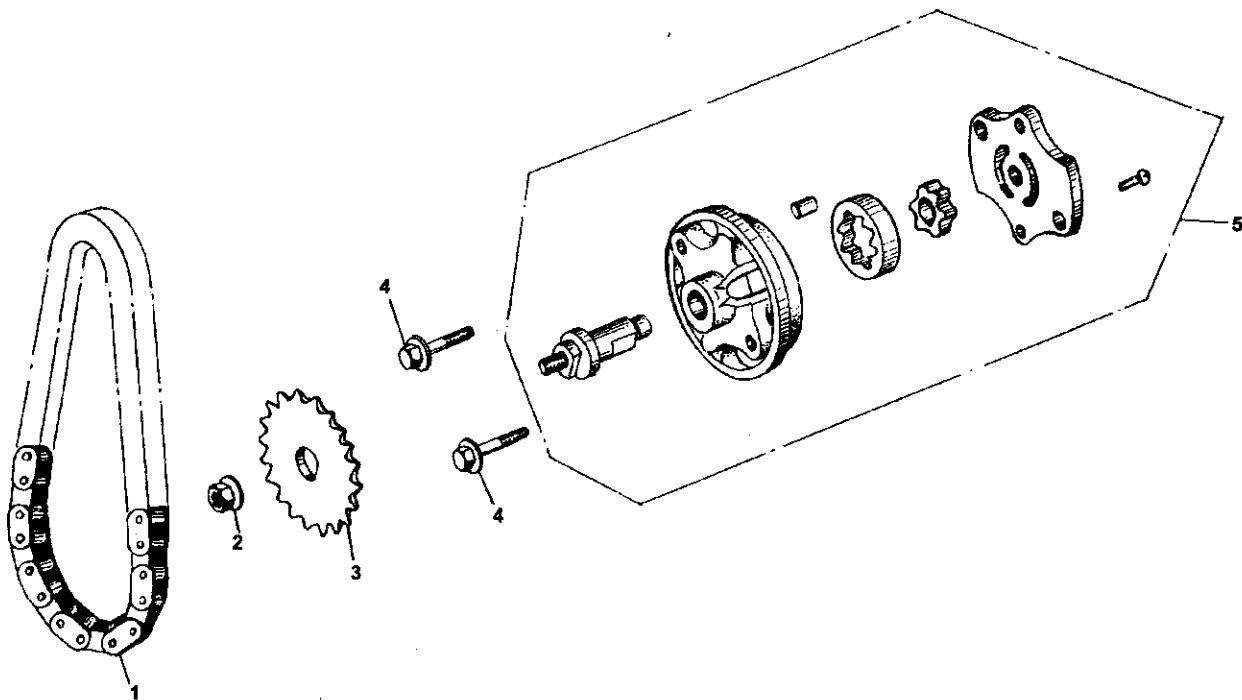
FAN COVER AND SHROUD ASSY.



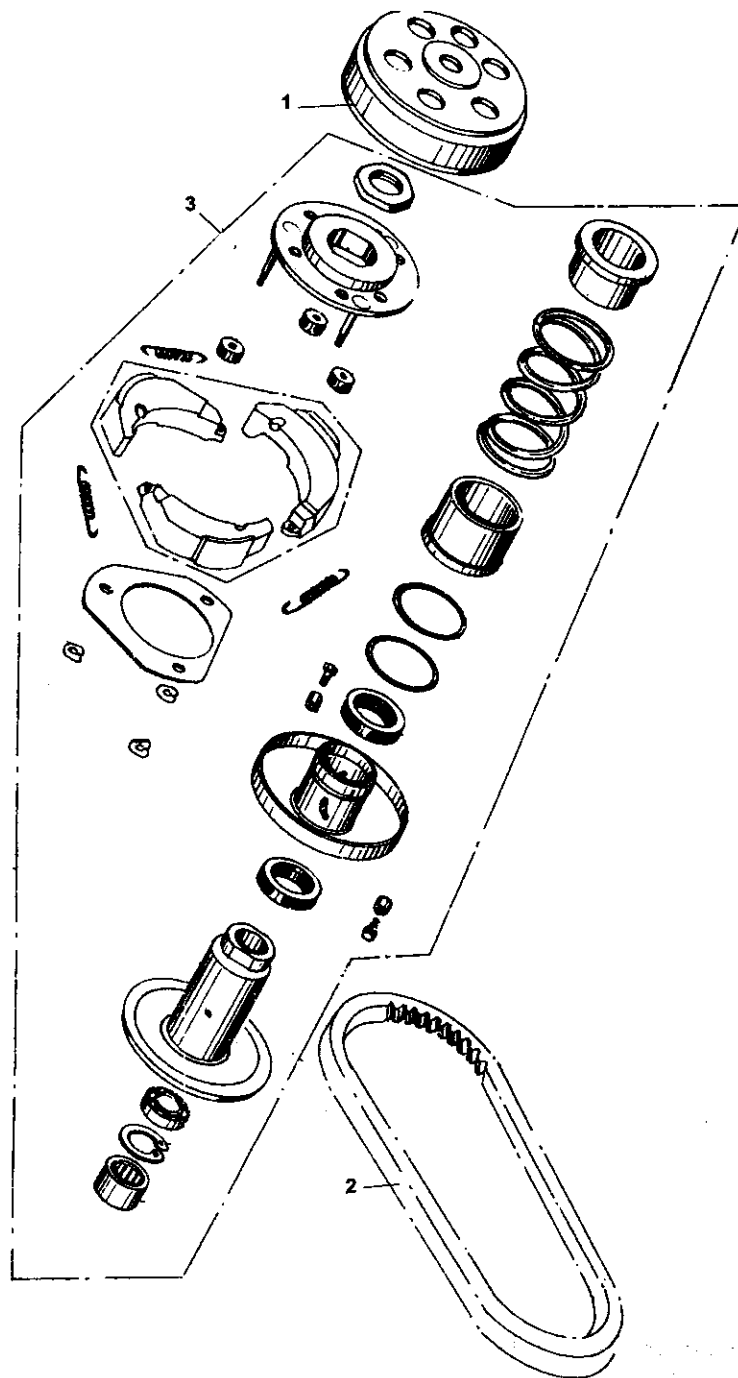
FAN COVER AND SHROUD ASSY.

REF NO.	PART NO.	DESCRIPTION	REGD NO.	
1	M150-1009410	FAN COVER COMP.	1	
2	M150-1009002	STARTER CABLE CLAMP	1	
3	M150-1009401	CARBURETOR COOLING DUCT	1	
4	M150-1009301	LOWER SHROUD	1	
5	M150-1009302	LOWER SHROUD SEAL	1	
6	M150-1009110	UPPER SHROUD COMP.	1	
7	M150-1009103	HIGH TENSION CORD CLIP	1	
8	M150-1009102	UPPER SHROUD SEAL	1	
9	M150-1009402	SCREW ST4.8X16-F	6	
10	M150-1003075	BOLT M6X25	3	

OIL PUMP ASSY.

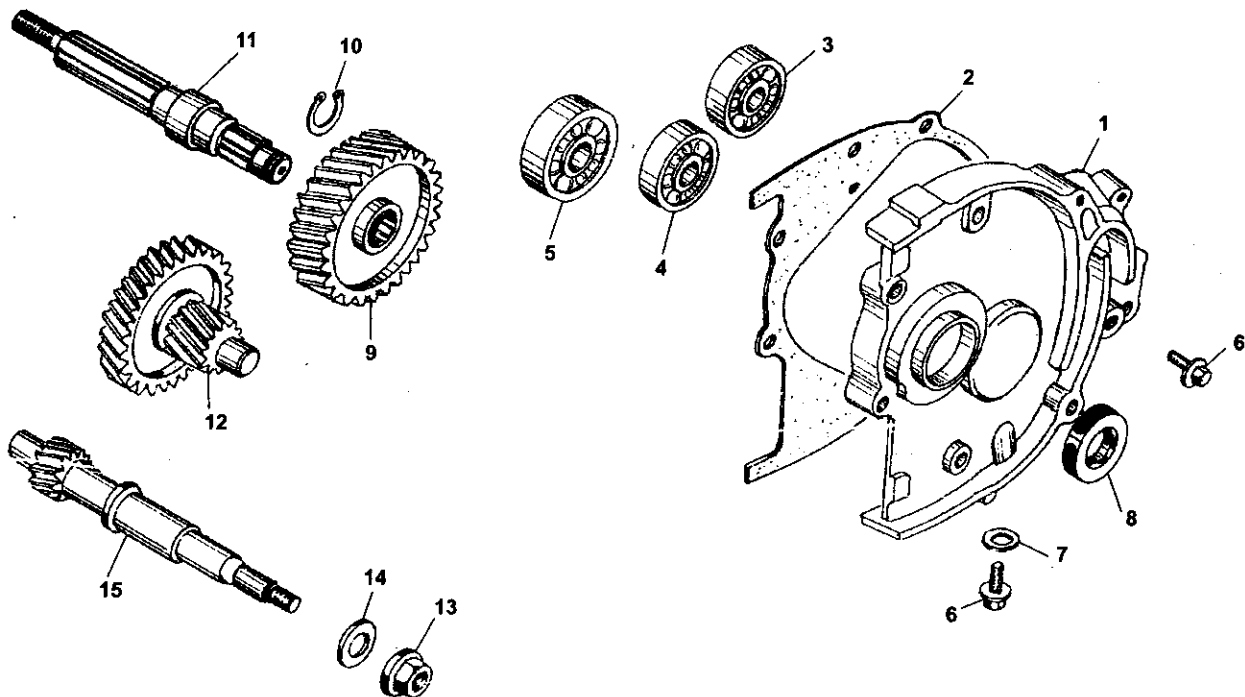


OIL PUMP ASSY.				
REF NO.	PART NO.	DESCRIPTION	REGD NO.	
1	M150-1021000	OIL PUMP CHAIN	1	
2	M150-1020002	FLANGE NUT M6	1	
3	M150-1020001	OIL PUMP SPROCKET DRIVER	1	
4	M150-B-1003075	BOLT M6X25	2	
5	M150-1022000	OIL PUMP SUB ASSY.	1	

DRIVEN PULLEY AND CLUTCH SUBASSY.

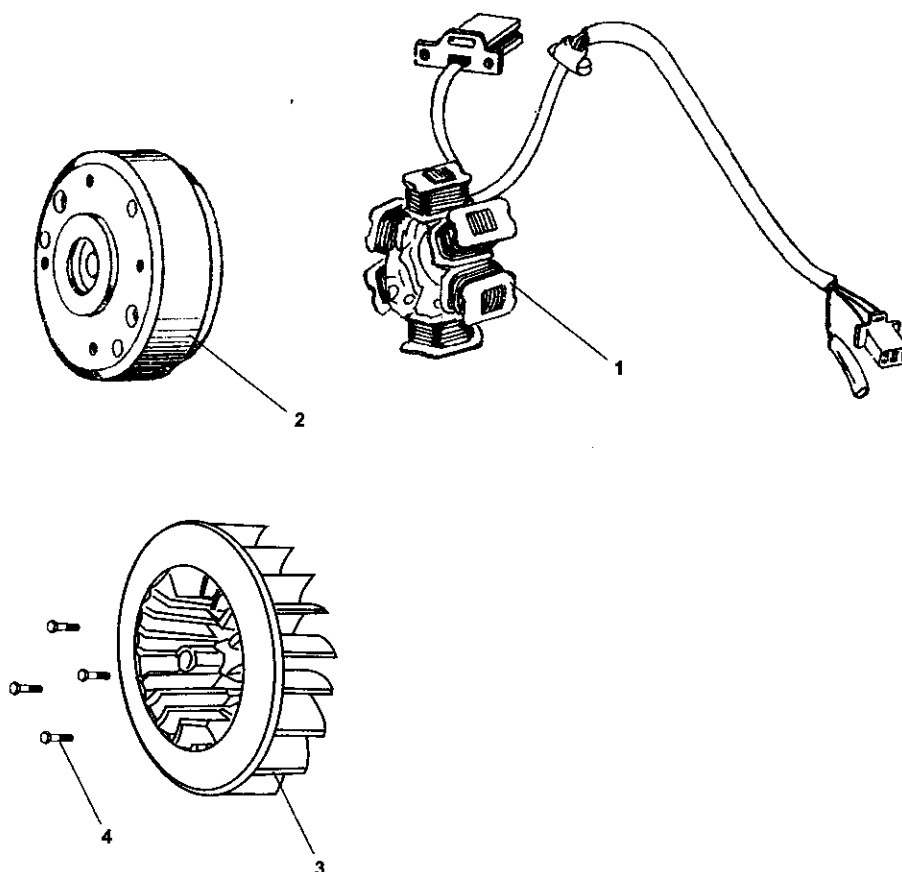
DRIVEN PULLEY AND CLUTCH SUBASSY.				
REF NO.	PART NO.	DESCRIPTION	REGD NO.	
1	M150-1032000	OUTER CLUTCH ASSY.	1	
2	M150-1033000	DRIVE BELT	1	
3	M150-1031000	DRIVER PULLEY ASSY.	1	

TRANSMISSION ASSY.



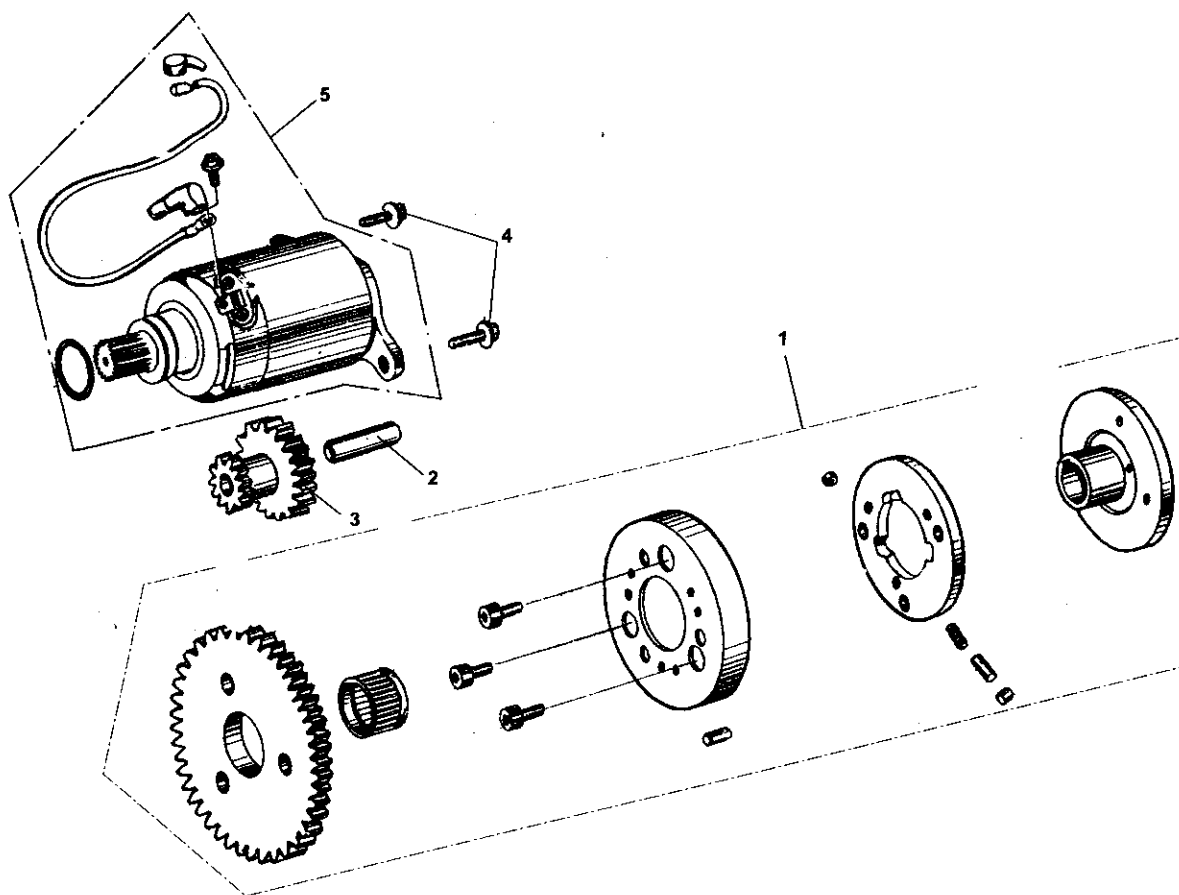
TRANSMISSION ASSY.				
REF NO.	PART NO.	DESCRIPTION	REGD NO.	
1	M150-1040001	TRANSMISSION COVER	1	
2	M150-1041000	TRANSMISSION COVER GASKET	1	
3	91004-E6203-KAT	RADIAL BALL BEARING E6203	1	
4	91004-E6202-KAT	RADIAL BALL BEARING E6202	1	
5	91004-E6204-KAT	RADIAL BALL BEARING E6204	1	
6	M150-1040008	SPECIAL BOLT M8X12	2	
7	M150-1040002	WASHER Ø8	1	
8	M150-1042000	OIL SEAL 20X32X6	1	
9	M150-1040004	FINAL GEAR	1	
10	94510-20000	EXTERNAL CIRCLIP 20	1	
11	M150-1040003	FINAL SHAFT	1	
12	M150-1043000	COUNTER SHAFT COMP.	1	
13	M150-1040007	COMPRESSOR FLANGE NUT M12	1	
14	M150-1040005	WASHER Ø12	1	
15	M150-1040006	DRIVE SHAFT	1	

ELECTRIC SYSTEM



ELECTRIC SYSTEM				
REF NO.	PART NO.	DESCRIPTION	REGD NO.	
1	M150-1051200	STATOR COMP.	1	
2	M150-1051100	FLYWHEEL COMP.	1	
3	M150-1051100-3	COOLING FAN COMP	1	
4	M150-1051100-4	FLANGE BOLT M6x18	4	

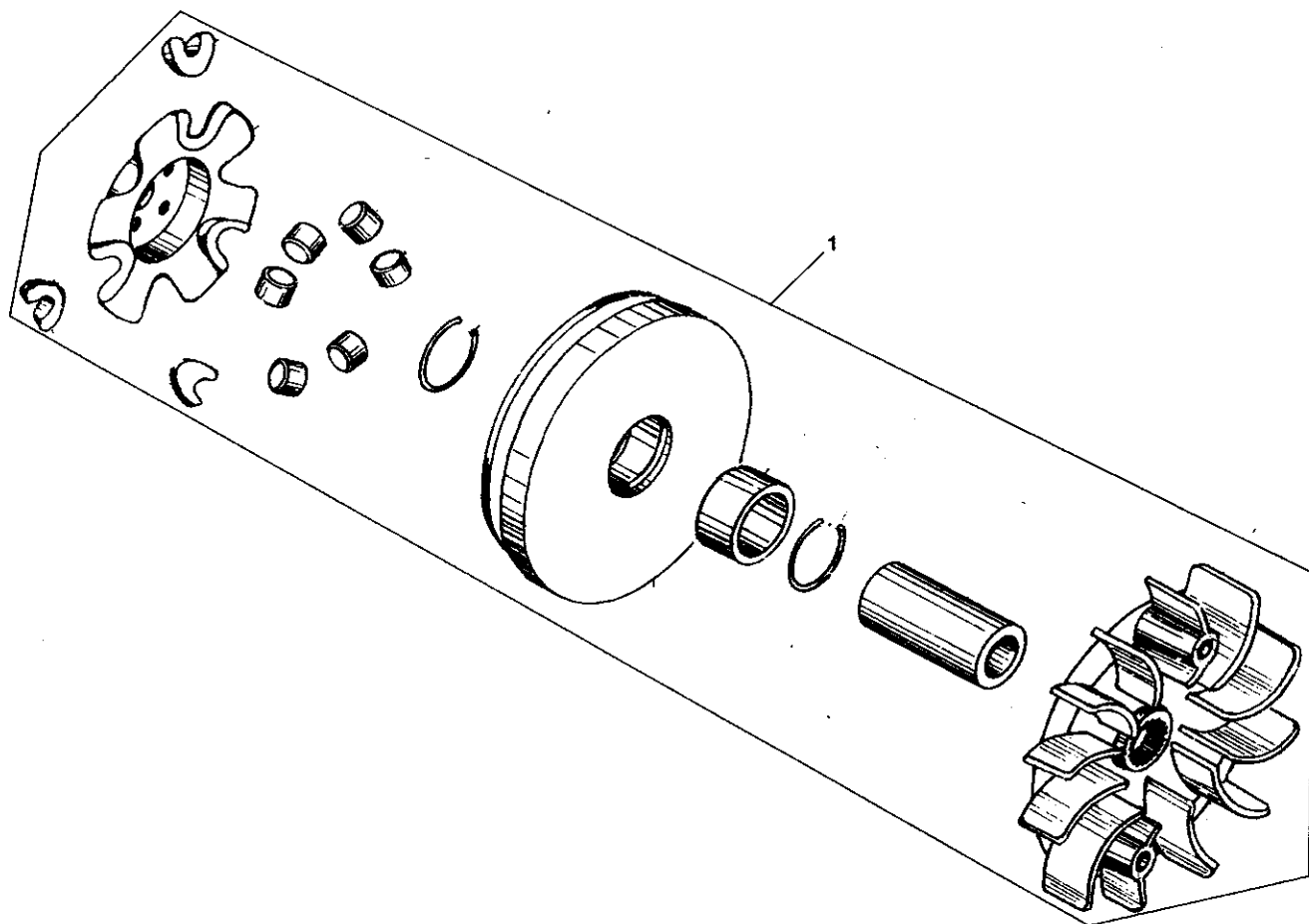
ELECTRIC STARTER ASSY.



ELECTRIC STARTER ASSY.

REF NO.	PART NO.	DESCRIPTION	REGD NO.	
1	M150-1060001	STARTER CLUTCH FLANGE. ASSY.	1	
2	M150-1060002	STARTER REDUCTION GEAR SHAFT	1	
3	M150-1060003	STARTER REDUCTION GEAR	1	
4	M150-1060005	FLANGE BOLT M6X16	2	
5	M150-1064000	STARTER MOTOR ASSY.	1	

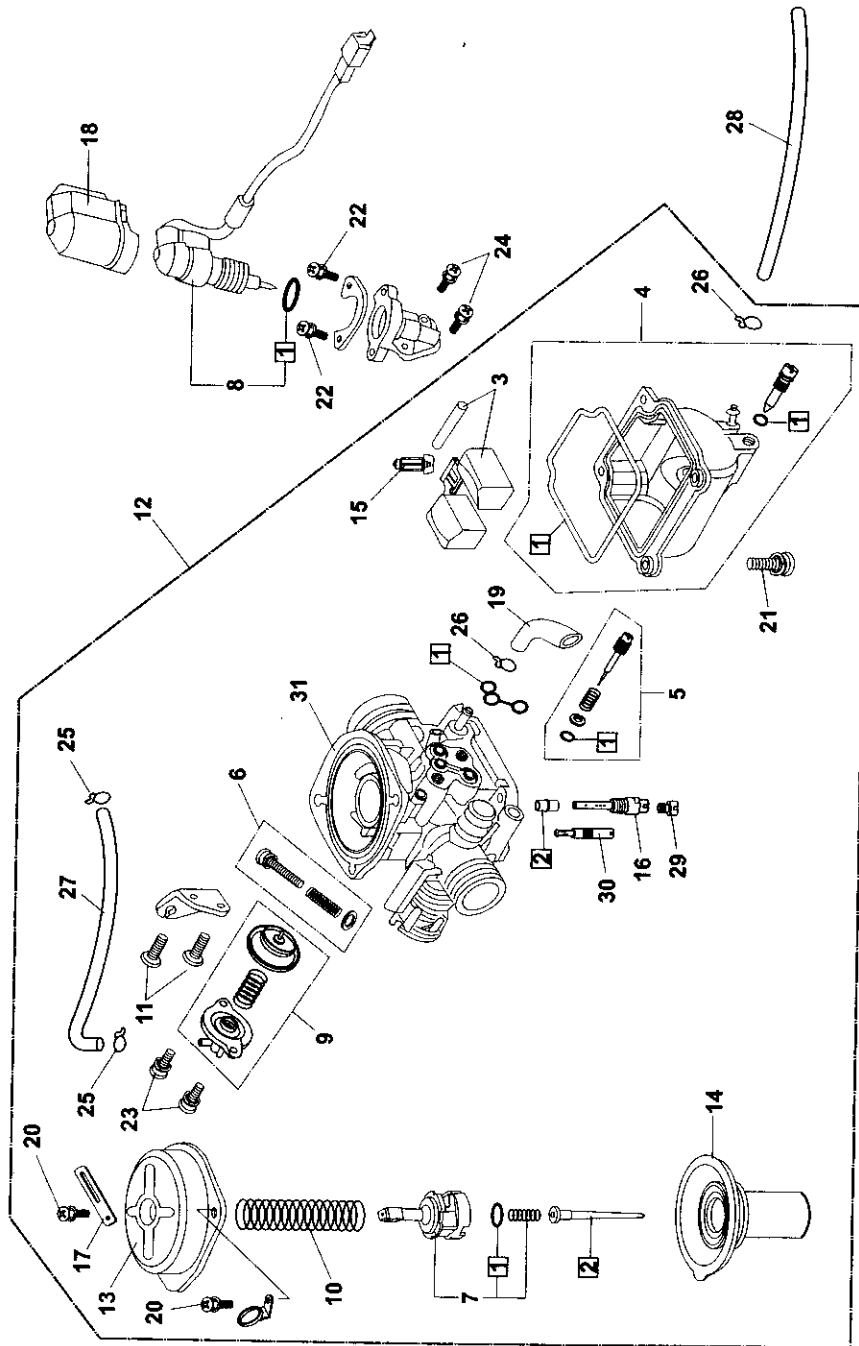
DRIVE PULLEY SUBASSY.



DRIVE PULLEY SUBASSY.				
REF NO.	PART NO.	DESCRIPTION	REGD NO.	
1	M150-1071000	MOVABLE DRIVE PULLEY ASSY.	1	

FIG. 15

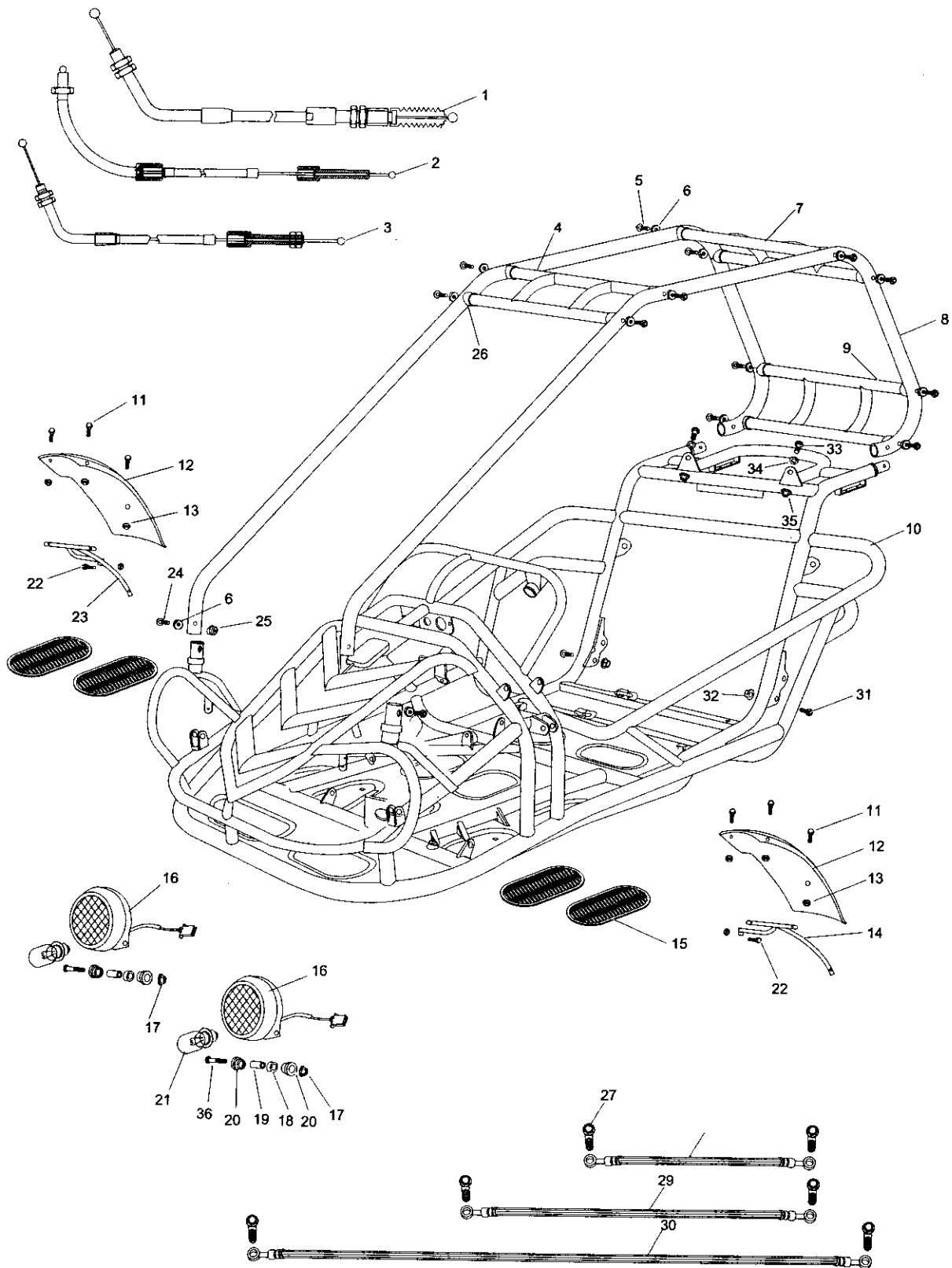
CARBURETOR



CARBURETOR				
REF NO.	PART NO.	DESCRIPTION	REGD NO.	
1	16010-KAT-901	GASKET SET A	1	
2	16012-KAT-903	NEEDLE SET. JET	1	
3	16013-KAT-904	FLOAT SET	1	
4	16015-KAT-905	CHAMBER FLOAT SET.	1	
5	16016-KAT-906	SCREW SET A	1	
6	16028-KAT-907	SCREW SET B	1	
7	16037-KAT-908	PLATE SET. VALVE	1	
8	16046-KAT-909	BY STARTER ASSY., AUTO	1	
9	16048-KAT-910	VALVE SET. AIR CUT	1	
10	16050-KAT-911	COMPRESSION COIL SPRING.	1	
11	16080-KJ9-003	PAN SCREW. M5x12	1	
12	16100-KAT-913	CARBURETOR ASSY.	2	
13	16107-KAT-914	TOP	1	
14	16111-KAT-915	PISTON COMP., VACUUM	1	
15	16155-KAT-902	VALVE COMP. FLOAT	1	
16	16165-KAT-916	NEEDLE JET HOLDER.	1	
17	16179-KAB-670	BINDER	1	
18	16190-GJ2-004	CAP. HOLDER	1	
19	95005-45270-50	TUBE	1	
20	93500-04008	PAN SCREW M4x8	1	
21	93500-04014-1H	PAN SCREW M4x14	2	
22	93892-04008-18	SCREW-WASHER M4x8	4	
23	93892-04010-18	SCREW-WASHER M4x10	2	
24	93892-05012-18	SCREW-WASHER M5x12	2	
25	95002-02079	TUBE CLIP (B7)	2	
26	95002-02089	TUBE CLIP (B8)	2	
27	95005-35200-21	TUBE 3.5x210	2	
28	16199-GT8-600	TUBE	1	
29	99101-GHB-0112	MAIN JET 112#	1	
30	99103-GY6-0350	SLOW JET 35#	1	
31	16100-KAT-923	CARBURETOR BODY	1	

FIG. 16

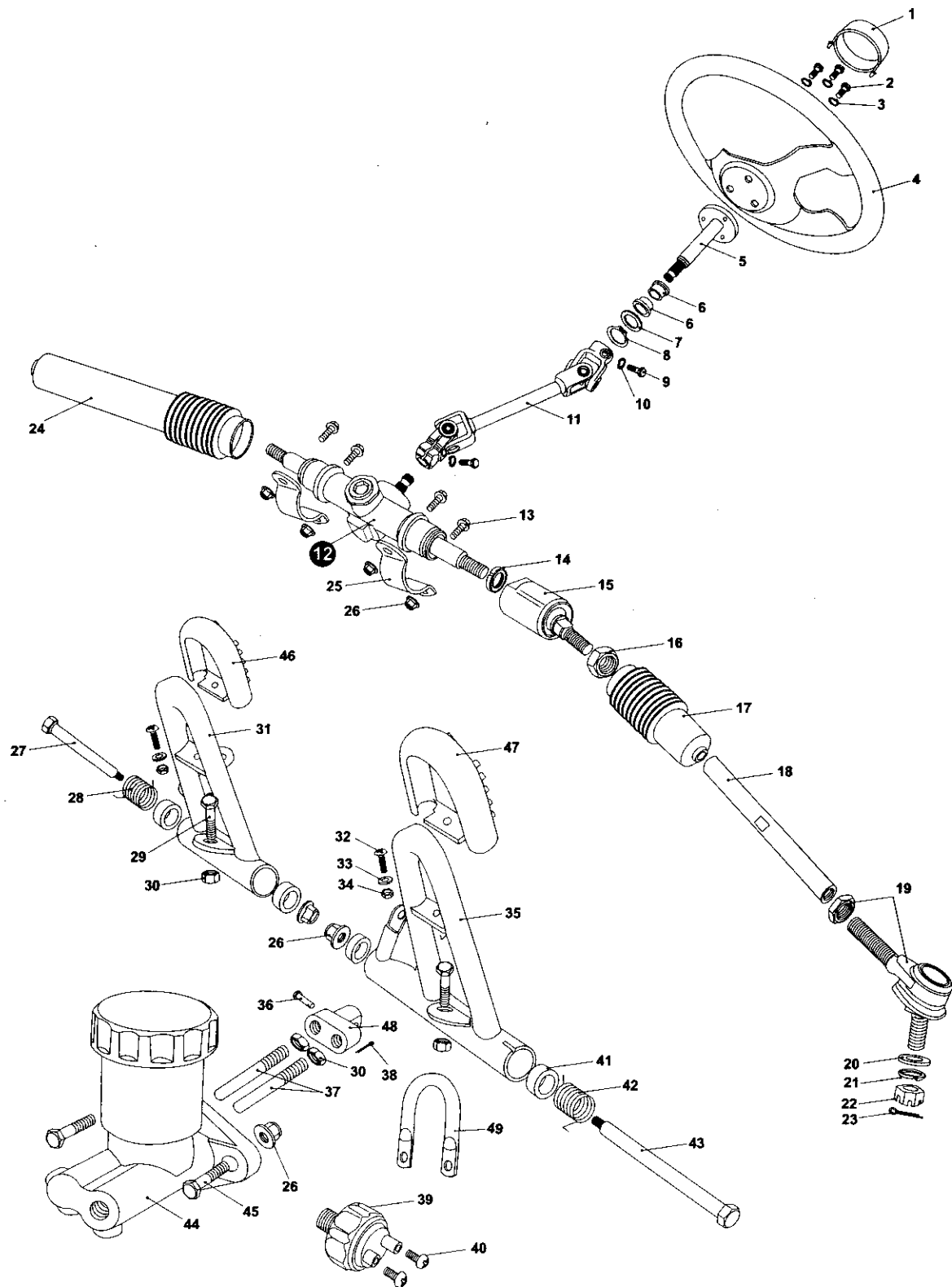
FRAME GROUP



FRAME GROUP

[illegible]

STEERING SHAFT ASSY.

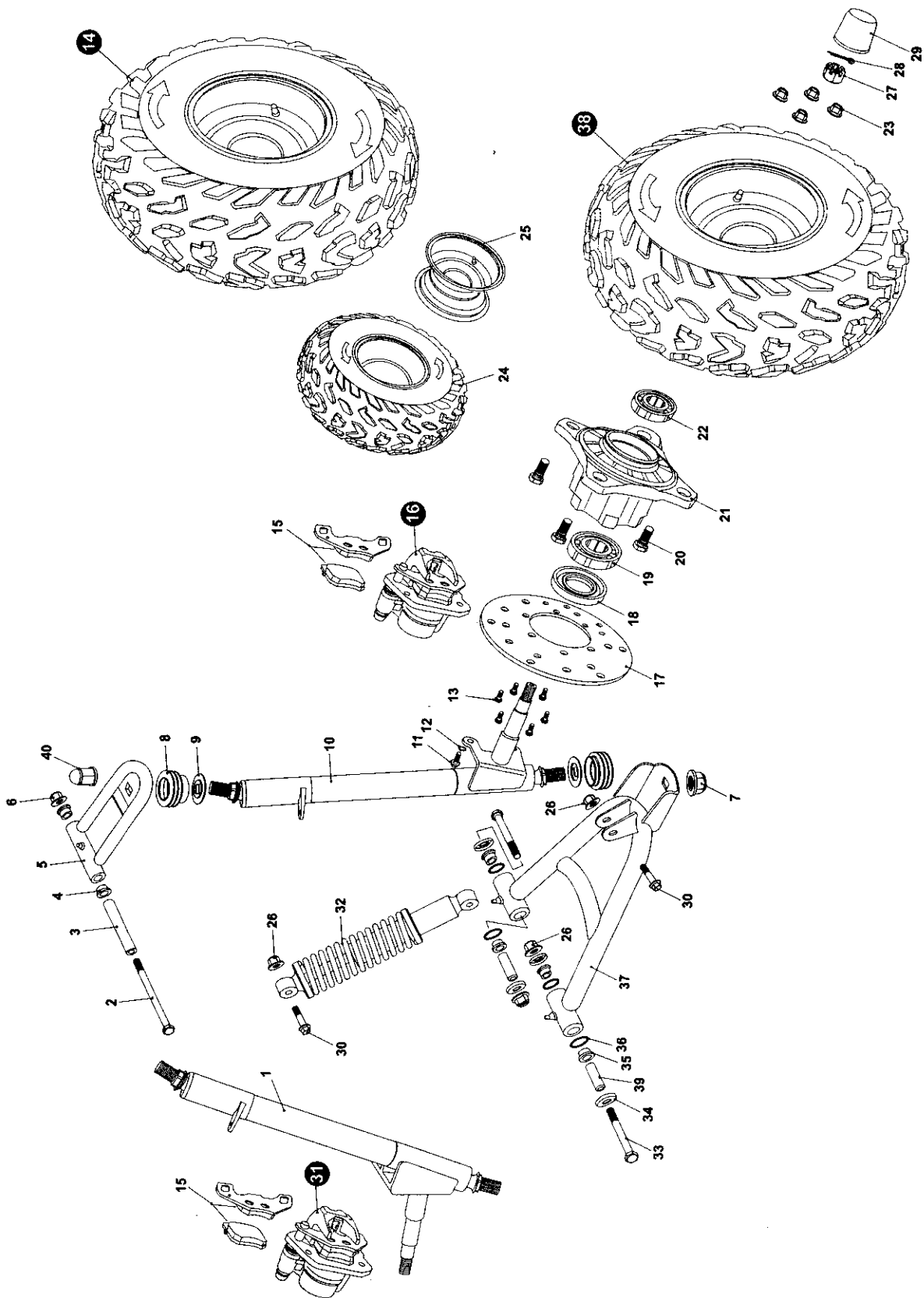


STEERING SHAFT ASSY.

REF NO.	PART NO.	DESCRIPTION	REGD NO.	
1	7.010.014	STEERING BOLT COVER	1	
2	9.100.612	BOLT. M6x12	3	
3	9.400.006	LOCK WASHER Ø6	3	
4	7.020.010	STEERING WHEEL	1	
5	6.000.092	STEERING SHAFT	1	
6	7.010.026	STEERING SHAFT BUSH	2	
7	9.700.020	SPECIAL WASHER. Ø20	1	
8	9.700.120	CIRCLIP Ø20	1	
9	9.100.825	BOLT M8x25	2	
10	9.400.008	LOCK WASHER Ø8	2	
11	6.000.093	STEERING KNUCKLE	1	
12	4.000.014	STEERING GEAR	1	
13	9.108.025	FLANGE BOLT M8x1.25x25	4	
14	9.900.016	ROUND NUT M16x1.5	2	
15	4.000.008	BALL JOINT STEERING	2	
16	9.200.010	NUT. M10	2	
17	7.020.002	BALL JOINT DUST COVER. L.	1	
18	8.010.071	TIE ROD	2	
19	6.000.062	ROD END.	2	
20	9.300.010	FLAT WASHER. Ø10	2	
21	9.400.010	LOCK WASHER. Ø10	2	
22	9.800.010	CASTLE NUT. M10	2	
23	9.500.215	COTTER PIN.	2	
24	7.020.202	BALL JOINT DUST COVER. R.	1	
25	8.020.014	STEERING GEAR BRACKET (B.G.R.)	2	
26	9.220.008	LOCKING FLANGE NUT M8	8	
27	9.708.145	THROTTLE PEDAL BOLT M8x1.25x145	1	
28	8.040.001	THROTTLE PEDAL RETURN SPRING	1	
29	9.108.040	FLANGE BOLT M8x1.25x40	2	
30	9.200.008	NUT M8	2	
31	4.000.016	THROTTLE PEDAL COMP.	1	
32	9.600.515	PAN. SCREW, M5x15	2	
33	9.300.005	FLAT WASHER. Ø5	2	
34	9.200.005	NUT M5	2	
35	4.000.015	BRAKE PEDAL COMP	1	
36	9.700.624	PIN 6x24	1	
37	8.010.081	SPINDLE PIN.	2	
38	9.500.212	COTTER PIN. 2X12	1	
39	6.000.063	BRAKE LAMP SWITCH ASS'Y.	1	
40	9.600.306	PAN. SCREW. M3x6	2	
41	7.010.004	PEDAL BUSH.	4	
42	8.040.007	BRAKE PEDAL RETURN SPRING	1	
43	9.708.222	BRAKE PEDAL BOLT M8x1.25x222	1	
44	6.000.076	MASTER CYLINDER	1	
45	9.108.030	FLANGE BOLT M8x1.25x30	2	
46	7.020.036	THROTTLE PEDAL PAD	1	
47	7.020.037	BRAKE PEDAL PAD	1	
48	8.030.024	SPINDLE BRACKET	1	
49	8.070.044	MASTER CYLINDER BRACKET	1	

FIG. 18

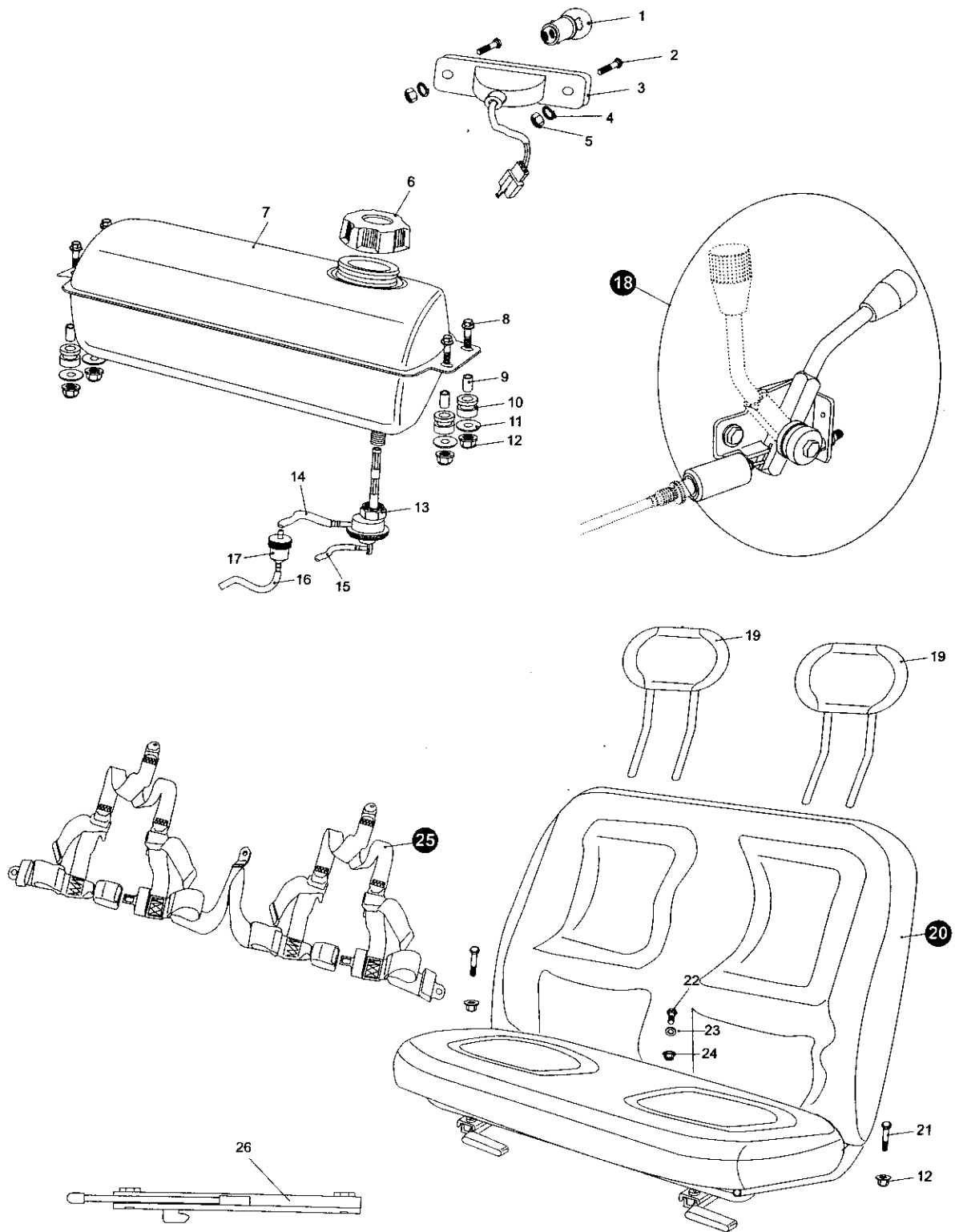
SUSPENSION ARM ASSY.



18

FIG. 19

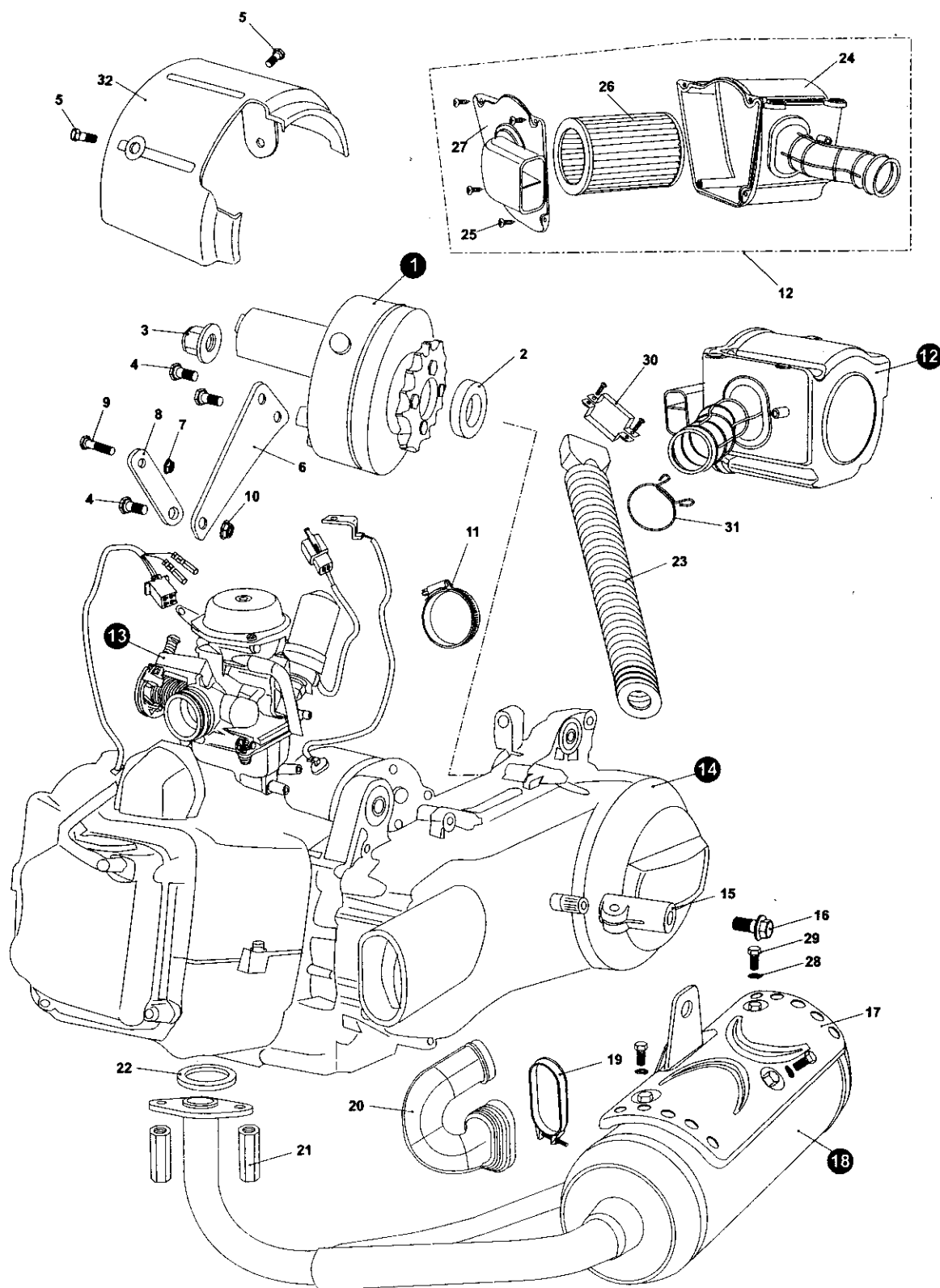
REAR CARGO RACK/SEAT/BELT



19

FIG. 20

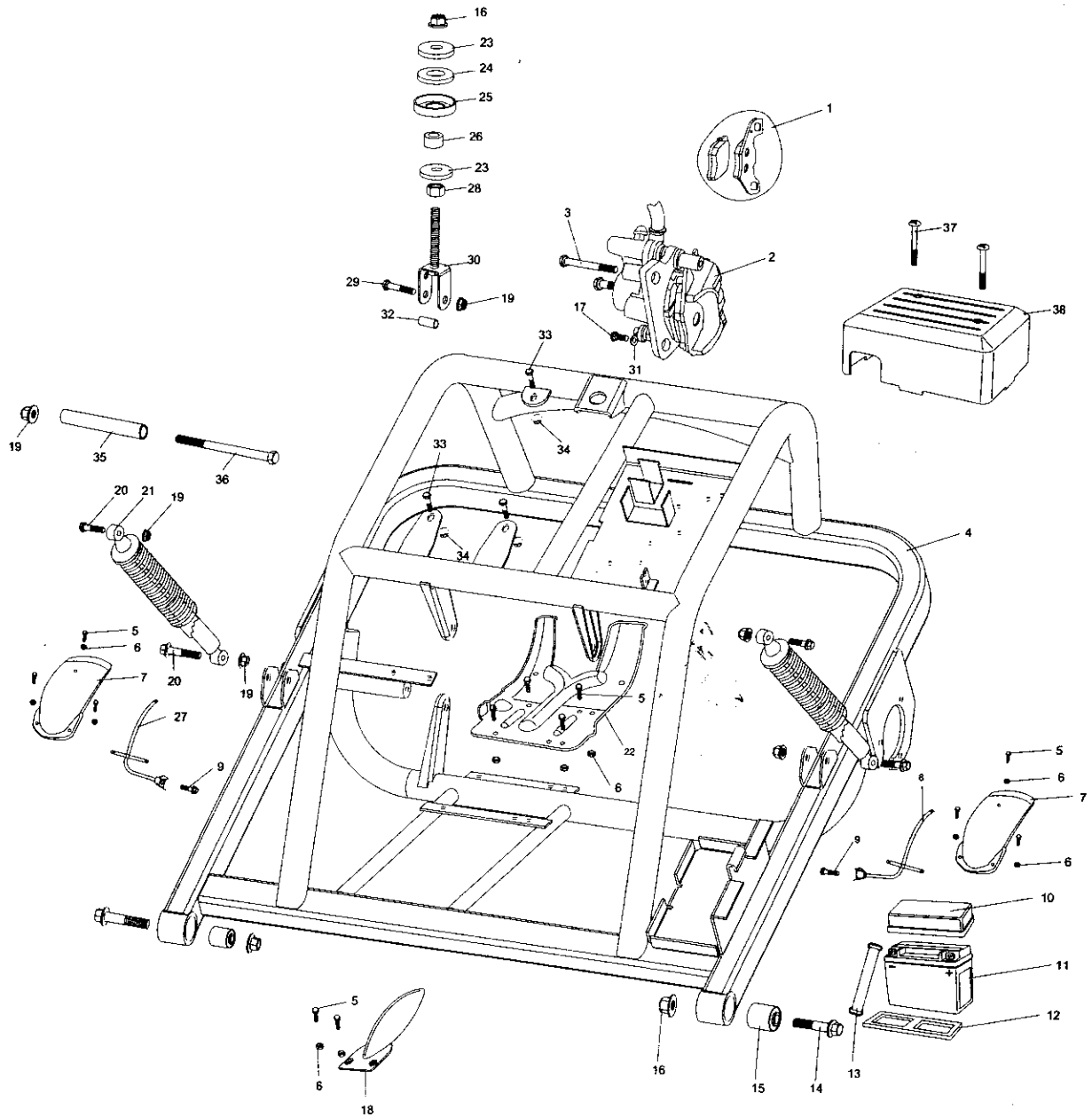
ENGINE/MUFFLER/AIR CLEANER



20

FIG. 21

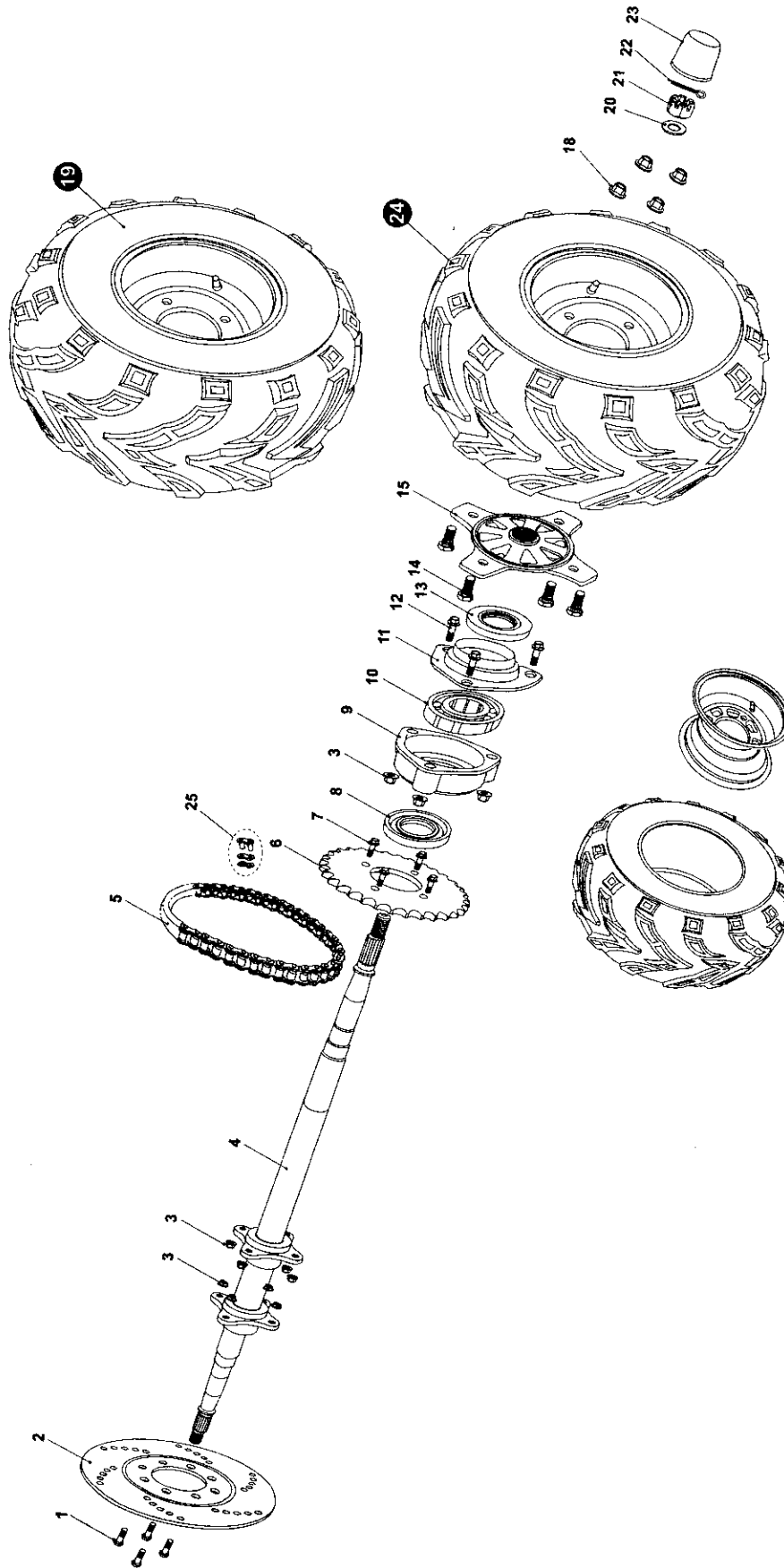
REAR SWING ARM



REAR SWING ARM				
REF NO.	PART NO.	DESCRIPTION	REGD NO.	
1	7.020.022	BRAKE PAD SET, RR	1	
2	6.000.229	CALIPER ASS'Y, RR	1	
3	9.108.156	STRAP BOLT M8x1.25x156	1	
4	2.000.039	REAR SWING ARM COMP.	1	
5	9106.016	FLANGE BOLT M6x16	12	
6	9.200.006	NYLON LOCKING NUT, M6	12	
7	7.010.034	FENDER RR.	2	
8	6.000.101	REAR FENDER BRACKET, L	1	
9	9.108.045	FLANGE BOLT M8x1.25x45	2	
10	7.010.028	BATTERY COVER LID	1	
11	6.000.055	BATTERY (GTX9-BX)	1	
12	7.020.020	BATTERY CUSHION.	1	
13	7.020.023	BATTERY BAND	1	
14	9.112.060	FLANGE BOLT M12x1.25x60	2	
15	7.020.008	SWING ARM CUSHION BUSH	2	
16	9.220.012	LOCKING FLANGE NUT M12	2	
17	9.108.014	FLANGE BOLT M8x1.25x14	1	
18	7.010.031	REAR DISC COVER	1	
19	9.220.010	LOCKING FLANGE NUT M10	6	
20	9.110.040	FLANGE BOLT M10x1.25x40	4	
21	6.000.006	REAR SHOCK	2	
22	7.010.032	CHAIN AND DISC GUARD	1	
23	8.010.042	ENGINE MOUNT WASHER, LINT	2	
24	7.020.001	ENGINE MOUNT CUSHION, LINK	1	
25	8.020.045	ENGINE MOUNT SPACER, LINK	1	
26	8.010.041	ENGINE MOUNT COLLAR, LINK	1	
27	6.000.068	REAR FENDER BRACKET, R	1	
28	9.200.012	UNT M12	1	
29	9.110.045	FLANGE BOLT M10x1.25x45	1	
30	6.000.026	ENGINE MOUNT BOLT PLATE	1	
31	9.400.008	LOCK WASHER Ø8	1	
32	8.010.076	ENGINE MOUNT BOLT PLATE COLLAR	1	
33	9.106.022	FLANGE BOLT M6x22	3	
34	9.210.006	NYLON LOCKING NUT M6	3	
35	8.010.025	ENGINE MOUNT COLLAR	1	
36	9.710.195	FLANGE BOLT M10x1.25x195	1	
37	9.600.655	ROUND HEAD BOLT M6x55	2	
38	7.010.029	ELECTRIC COVER LID	1	

FIG. 22

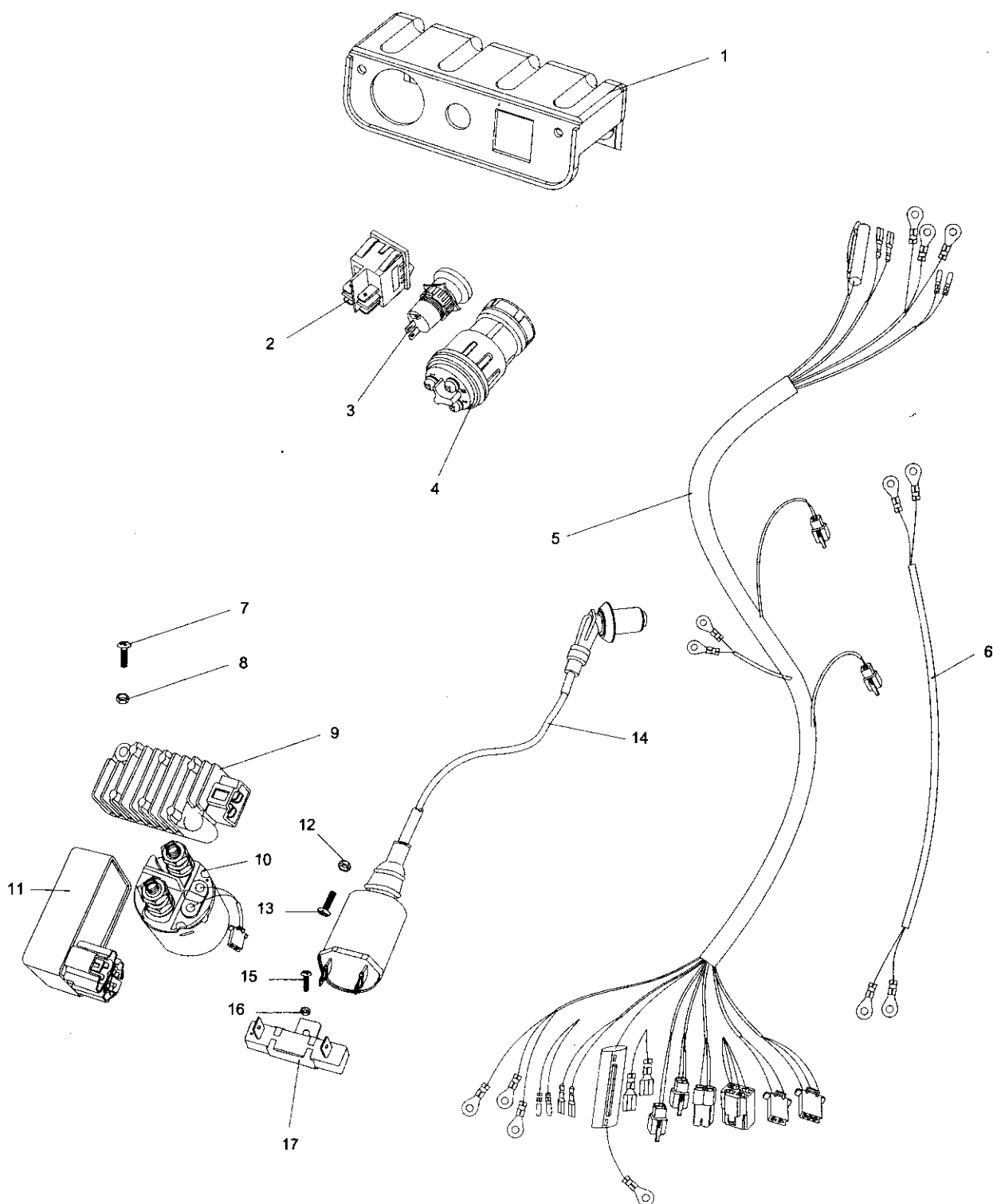
REAR HOUSING



22

FIG. 23

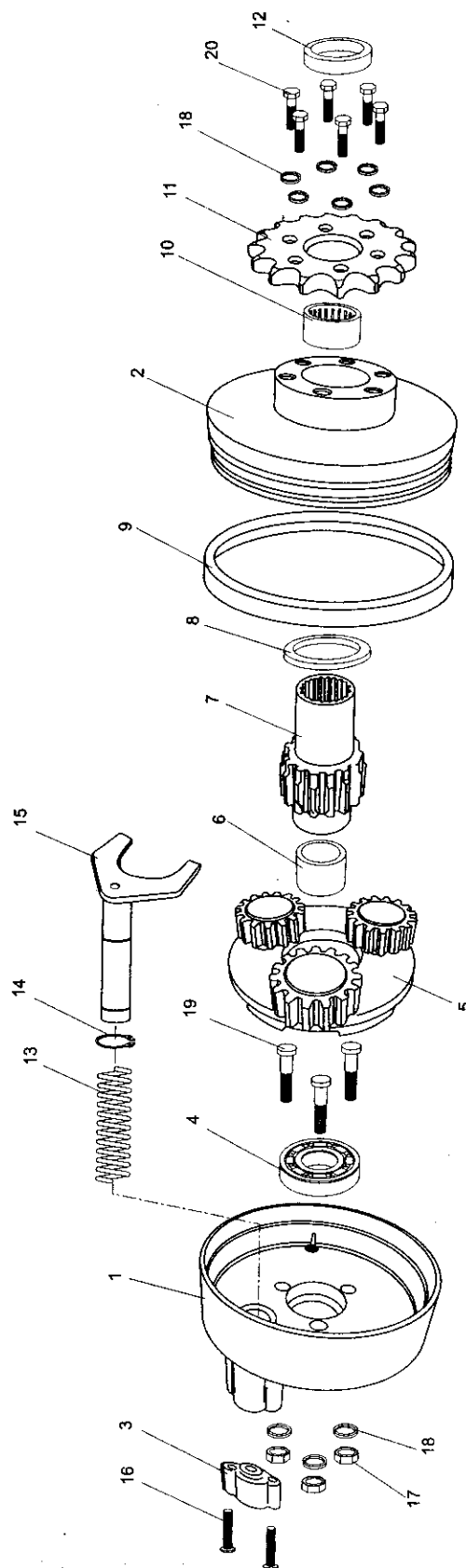
WIRE HARNESS/ELECTRICAL



23

FIG. 24

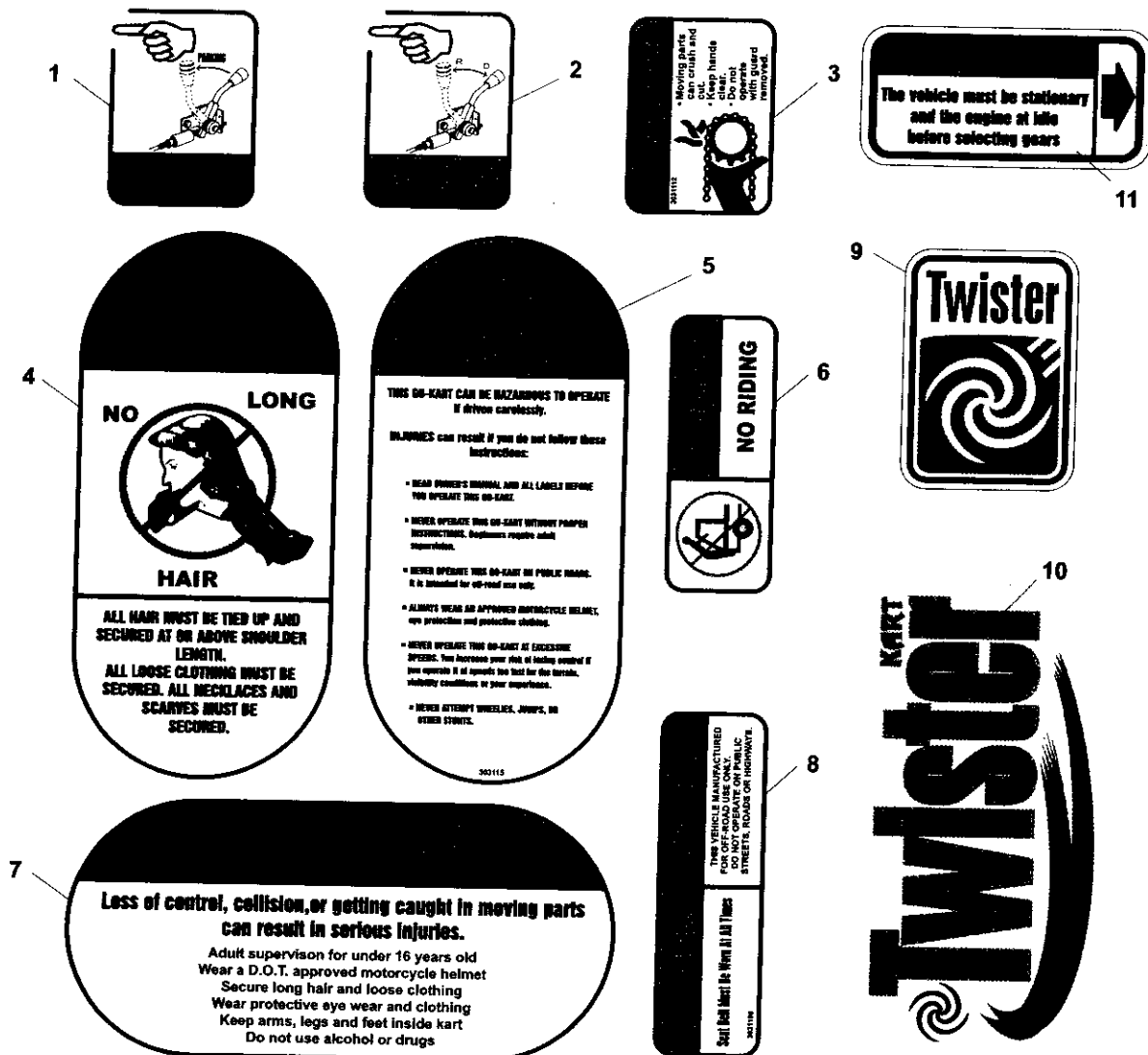
REVERSE ASSY.



REVERSE ASSY.

[illegible]

WARNING STICKERS



WARNING STICKERS				
REF NO.	PART NO.	DESCRIPTION	REGD NO.	
1	9.090.007	PARKING BRAKE LABEL	1	
2	9.090.008	REVERSE LEVER LABEL	1	
3	9.090.009	CHAIN GUARD LABEL	1	
4	9.090.010	NO LONG HAIR LABEL	1	
5	9.090.011	WARNING LABEL	1	
6	9.090.012	NO CLIMBING LABEL	1	
7	9.090.013	WARNING LABEL	1	
8	9.090.014	SEAT BELT LABEL	1	
9	9.090.015	TWISTER FR LABEL	1	
10	9.090.016	TWISTER LABEL	3	
11	9.090.017	WARNING LABEL	1	